

EOG RESOURCES, INC.

ADDENDUM TO LEGAL PLAT FOR

WINDMILL #05-23H

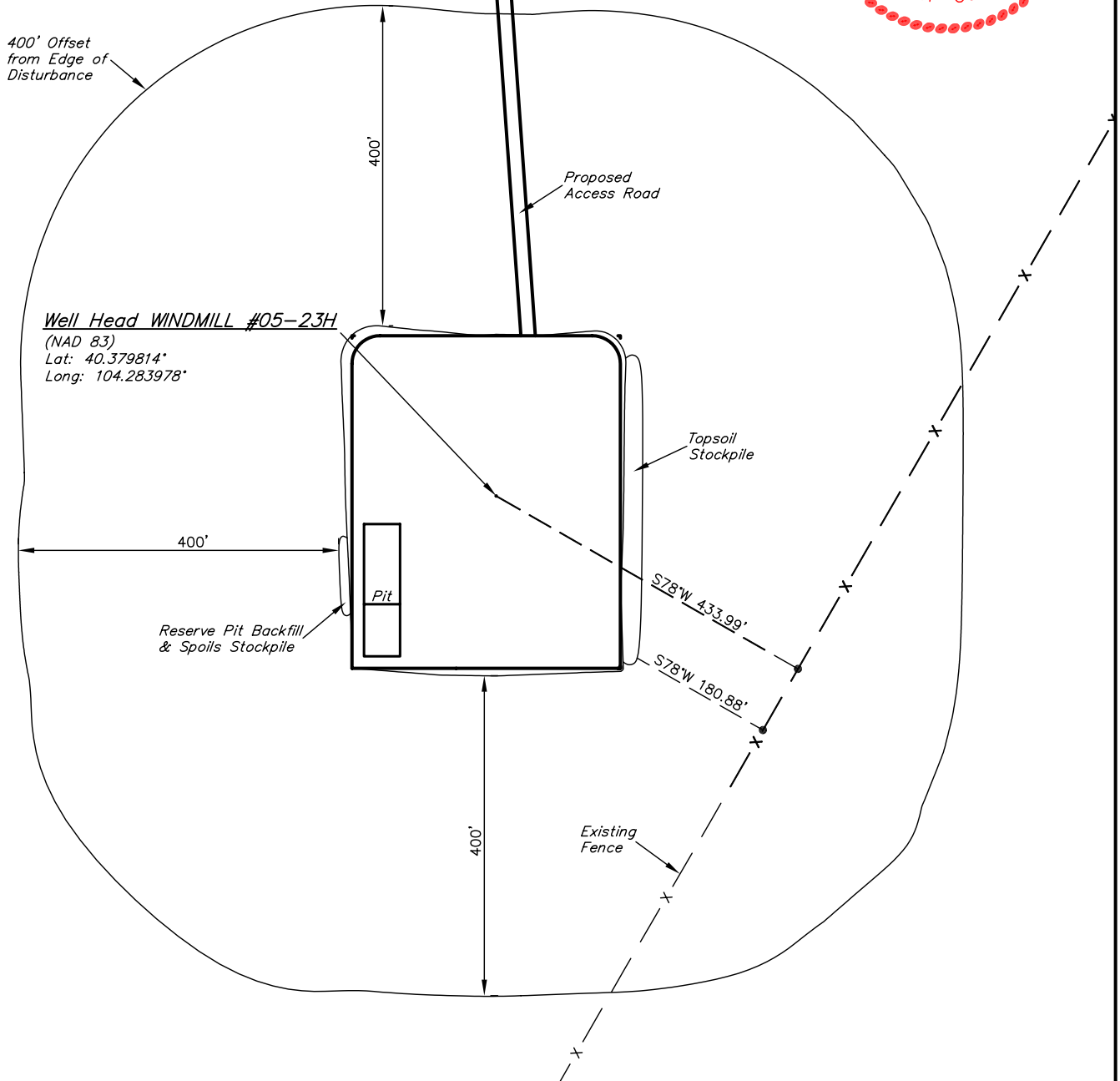
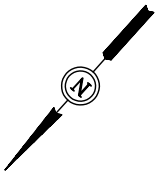
SECTION 23, T5N, R62W, 6th. P.M.

477' FSL 845' FEL

SCALE: 1" = 200'

DATE: 12-14-10

DRAWN BY: J.I.



UINTAH ENGINEERING & LAND SURVEYING

85 So. 200 East \* Vernal, Utah 84078 \* (435) 789-1017

# EOG RESOURCES, INC.

## CONSTRUCTION LAYOUT FOR

WINDMILL #05-23H

SECTION 23, T5N, R62W, 6th. P.M.

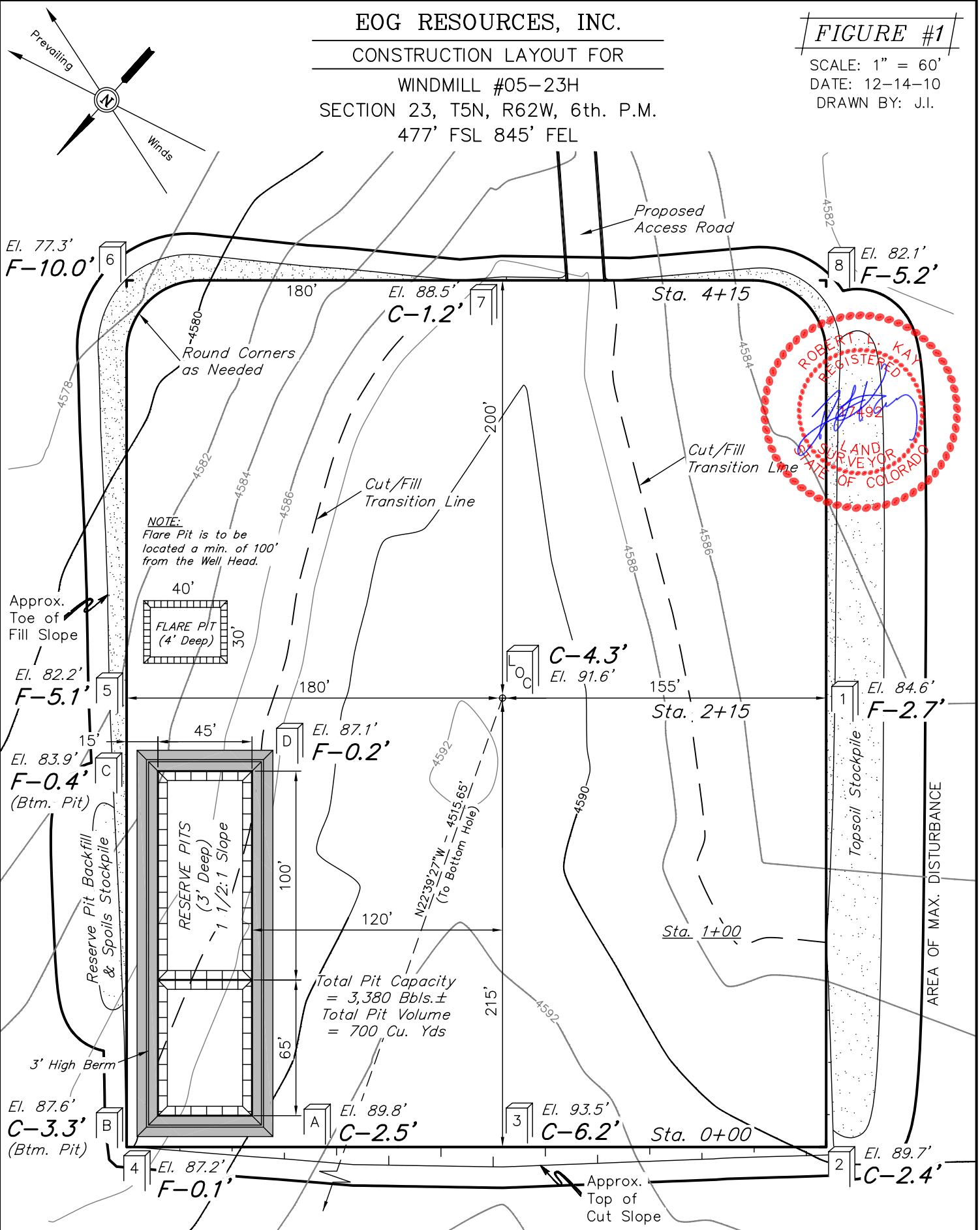
477' FSL 845' FEL

FIGURE #1

SCALE: 1" = 60'

DATE: 12-14-10

DRAWN BY: J.I.



Elev. Ungraded Ground At Loc. Stake = **4591.6'**  
 FINISHED GRADE ELEV. AT LOC. STAKE = **4587.3'**

UINTAH ENGINEERING & LAND SURVEYING  
 85 So. 200 East \* Vernal, Utah 84078 \* (435) 789-1017

# EOG RESOURCES, INC.

FIGURE #2

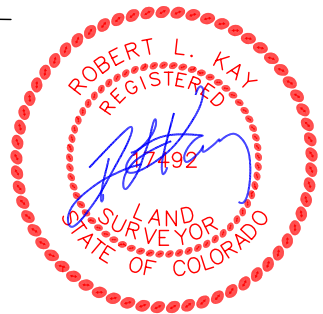
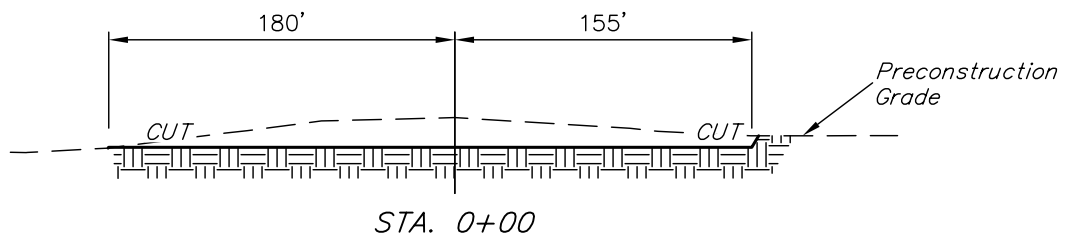
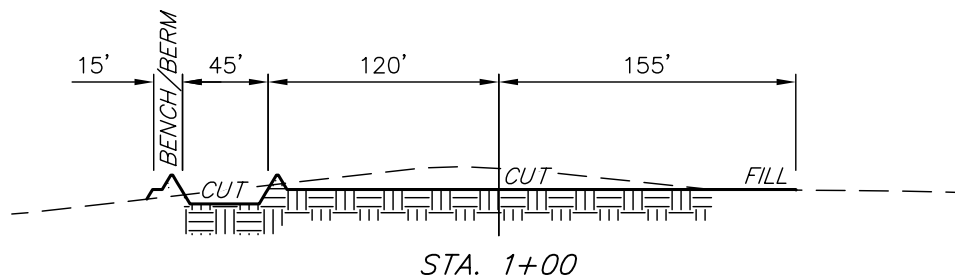
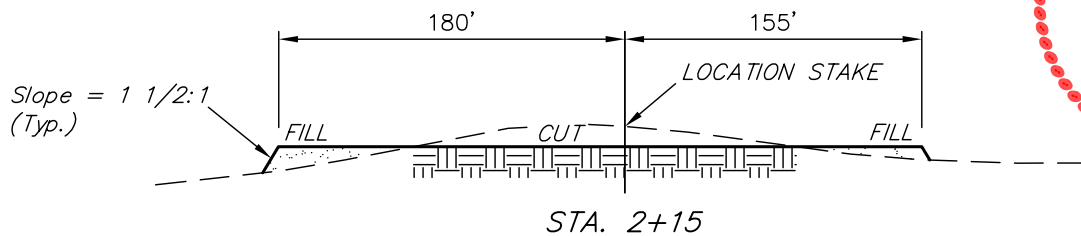
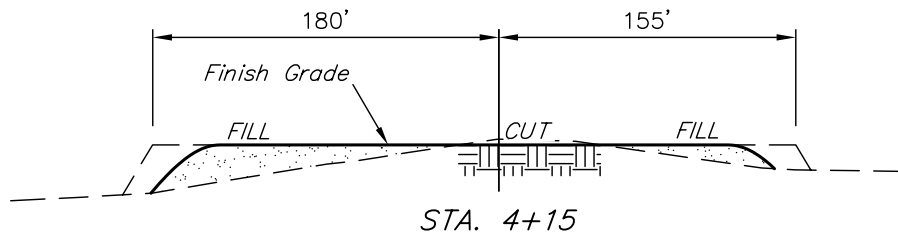
## CONSTRUCTION LAYOUT CROSS SECTIONS FOR

WINDMILL #05-23H

SECTION 23, T5N, R62W, 6th. P.M.

477' FSL 845' FEL

X-Section  
Scale  
1" = 100'  
DATE: 12-14-10  
DRAWN BY: J.I.



### NOTE:

Topsoil should not be Stripped Below Finished Grade on Substructure Area.

### APPROXIMATE ACREAGES

WELL SITE DISTURBANCE = ± 4.097 ACRES  
ACCESS ROAD DISTURBANCE = ± 0.417 ACRES  
TOTAL = ± 4.514 ACRES

\* NOTE:  
FILL QUANTITY INCLUDES 5% FOR COMPACTION

### APPROXIMATE YARDAGES

(6") Topsoil Stripping = 2,780 Cu. Yds.  
Remaining Location = 7,510 Cu. Yds.  
TOTAL CUT = 10,290 CU.YDS.  
FILL = 7,160 CU.YDS.

EXCESS MATERIAL = 3,130 Cu. Yds.  
Topsoil & Pit Backfill = 3,130 Cu. Yds.  
(1/2 Pit Vol.)  
EXCESS UNBALANCE = 0 Cu. Yds.  
(After Interim Rehabilitation)

UINTAH ENGINEERING & LAND SURVEYING  
85 So. 200 East \* Vernal, Utah 84078 \* (435) 789-1017

# EOG RESOURCES, INC.

## TYPICAL RIG LAYOUT FOR

WINDMILL #05-23H

SECTION 23, T5N, R62W, 6th. P.M.

477' FSL 845' FEL

FIGURE #3

SCALE: 1" = 60'

DATE: 12-14-10

DRAWN BY: J.I.

