

EOG RESOURCES, INC.

RECLAMATION DIAGRAM FOR

WINDMILL #05-23H

SECTION 23, T5N, R62W, 6th. P.M.

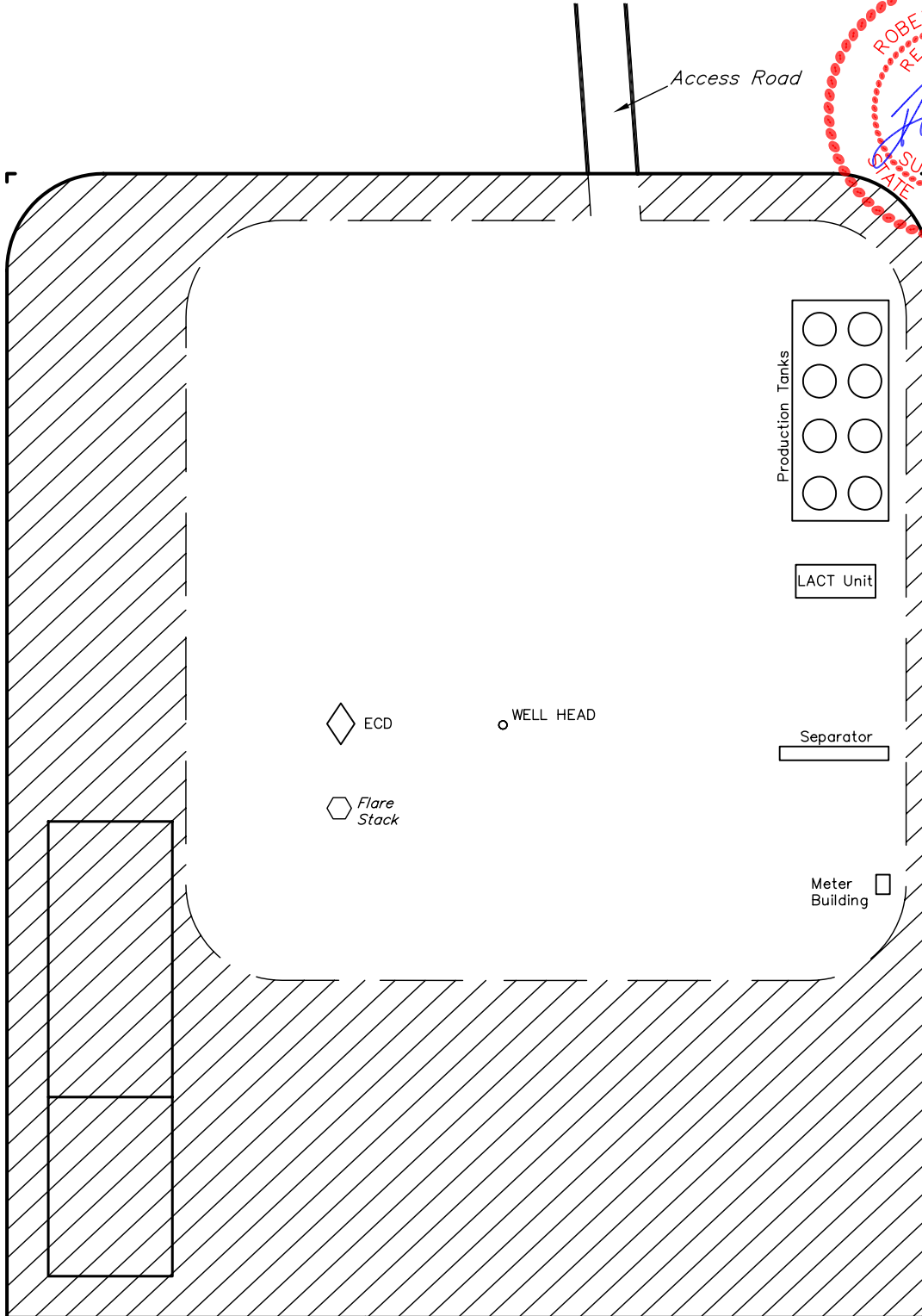
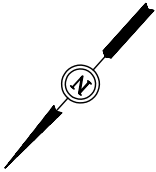
477' FSL 845' FEL

FIGURE #4

SCALE: 1" = 60'

DATE: 12-14-10

DRAWN BY: J.I.



APPROXIMATE ACREAGES  
UN-RECLAIMED = ± 1.638 ACRES

 RECLAIMED AREA

UINTAH ENGINEERING & LAND SURVEYING  
85 So. 200 East \* Vernal, Utah 84078 \* (435) 789-1017

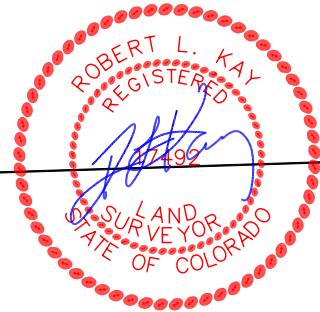
EOG RESOURCES, INC.

LOCATION DRAWING FOR

WINDMILL #05-23H  
SECTION 23, T5N, R62W, 6th. P.M.  
477' FSL 845' FEL

FIGURE #5

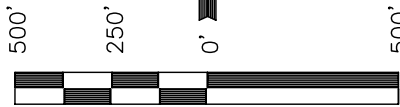
NE Cor. Sec. 23  
2010 UELS Alum.  
Cap, 0.5' High, "T"  
Post, Rebar  
Lat: 40.393147°  
Long: 104.280792°



1/4 Section Line

1/4 Section Line

23



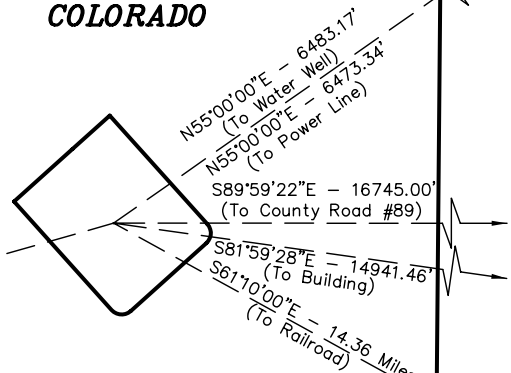
SCALE  
DATE: 12-14-10  
DRAWN BY: J.I.

Section Line  
N00°30'46"E - 5312.32' (Meas.)

1/16 Section Line

1/16 Section Line

STATE OF COLORADO



SW Cor. Sec. 23  
2008 Private Alum.  
Cap, Flush w/Ground,  
LS #22098, King  
Surveying Inc.  
Lat: 40.378150°  
Long: 104.300333°

Section Line  
N88°23'38"E - 5402.80' (Meas.)

2010 UELS Alum.  
Cap, 0.6' High, "T"  
Post, Rebar  
Lat: 40.378569°  
Long: 104.280958°

PLANT COMMUNITY

- DISTURBED GRASSLAND
- NATIVE GRASSLAND
- SHRUB LAND
- PLAINS RIPARIAN
- MOUNTAIN RIPARIAN
- FOREST LAND
- WETLANDS AQUATIC
- ALPINE
- OTHER (Describe): \_\_\_\_\_

CURRENT LAND USE

- CROP LAND:  IRRIGATED  DRY LAND  IMPROVED PASTURE  HAY MEADOW  CRP
- NON-CROP LAND:  RANGELAND  TIMBER  RECREATIONAL  OTHER (Describe) \_\_\_\_\_
- SUBDIVIDED:  INDUSTRIAL  COMMERCIAL  RESIDENTIAL \_\_\_\_\_

FUTURE LAND USE

- CROP LAND:  IRRIGATED  DRY LAND  IMPROVED PASTURE  HAY MEADOW  CRP
- NON-CROP LAND:  RANGELAND  TIMBER  RECREATIONAL  OTHER (Describe) \_\_\_\_\_
- SUBDIVIDED:  INDUSTRIAL  COMMERCIAL  RESIDENTIAL \_\_\_\_\_