

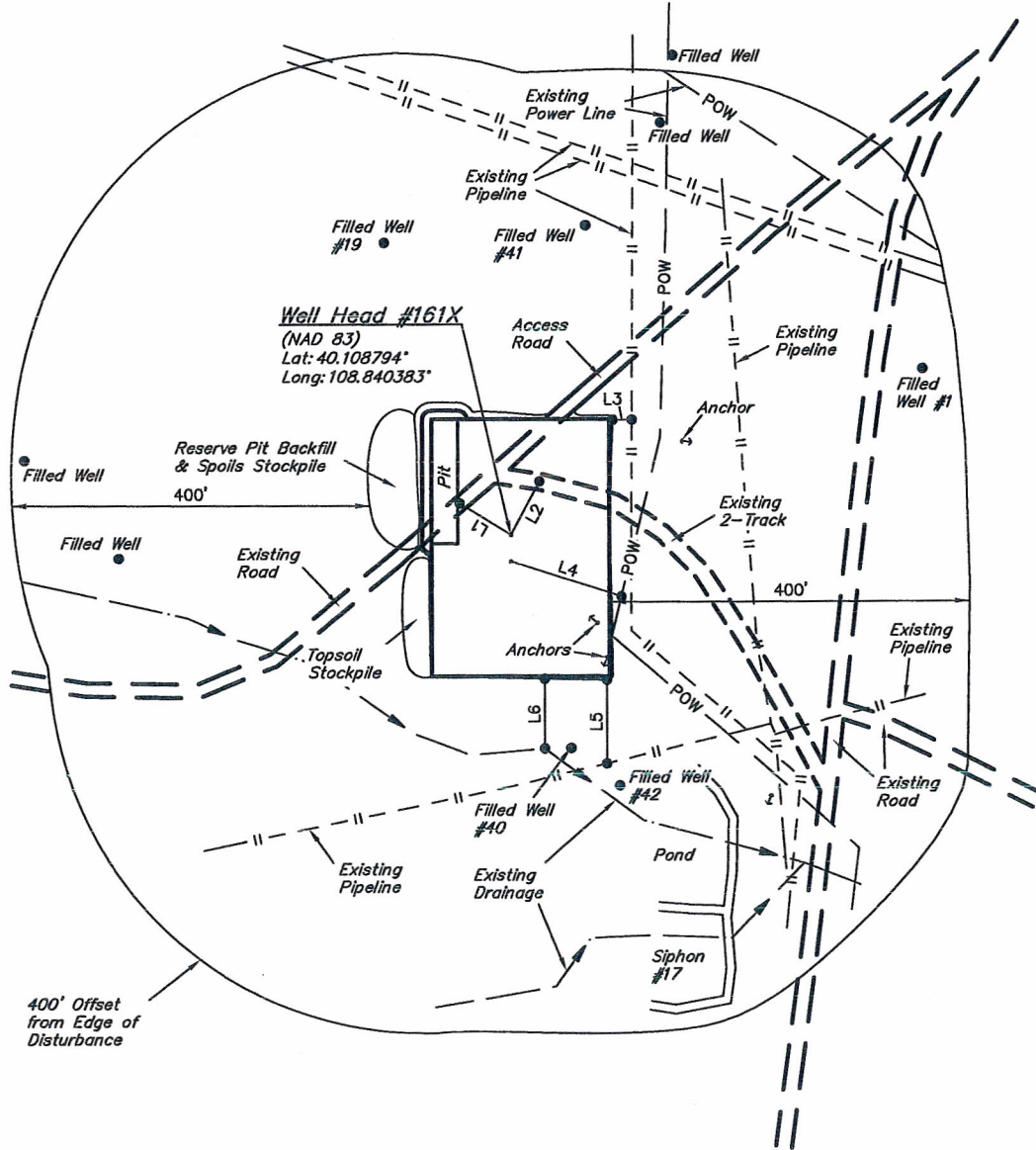
CHEVRON USA, INC.

ADDENDUM TO LEGAL PLAT FOR

FEE #160X & #161X
SECTION 28, T2N, R102W, 6th P.M.
SE 1/4 SE 1/4



SCALE: 1" = 200'
DATE: 11-19-10
DRAWN BY: S.L.



Well Head #161X
(NAD 83)
Lat: 40.108794°
Long: 108.840383°

LINE TABLE		
LINE	DIRECTION	LENGTH
L1	S89°02'36"E	67.76'
L2	S02°17'10"E	68.24'
L3	S59°26'43"W	21.57'
L4	S77°18'31"W	129.77'
L5	N30°33'17"W	94.04'
L6	N30°33'17"W	78.43'