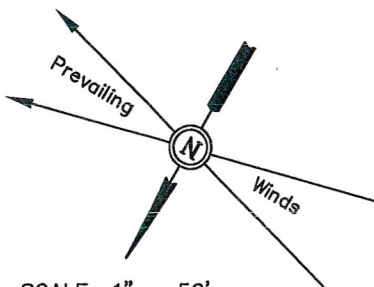


CHEVRON USA, INC.

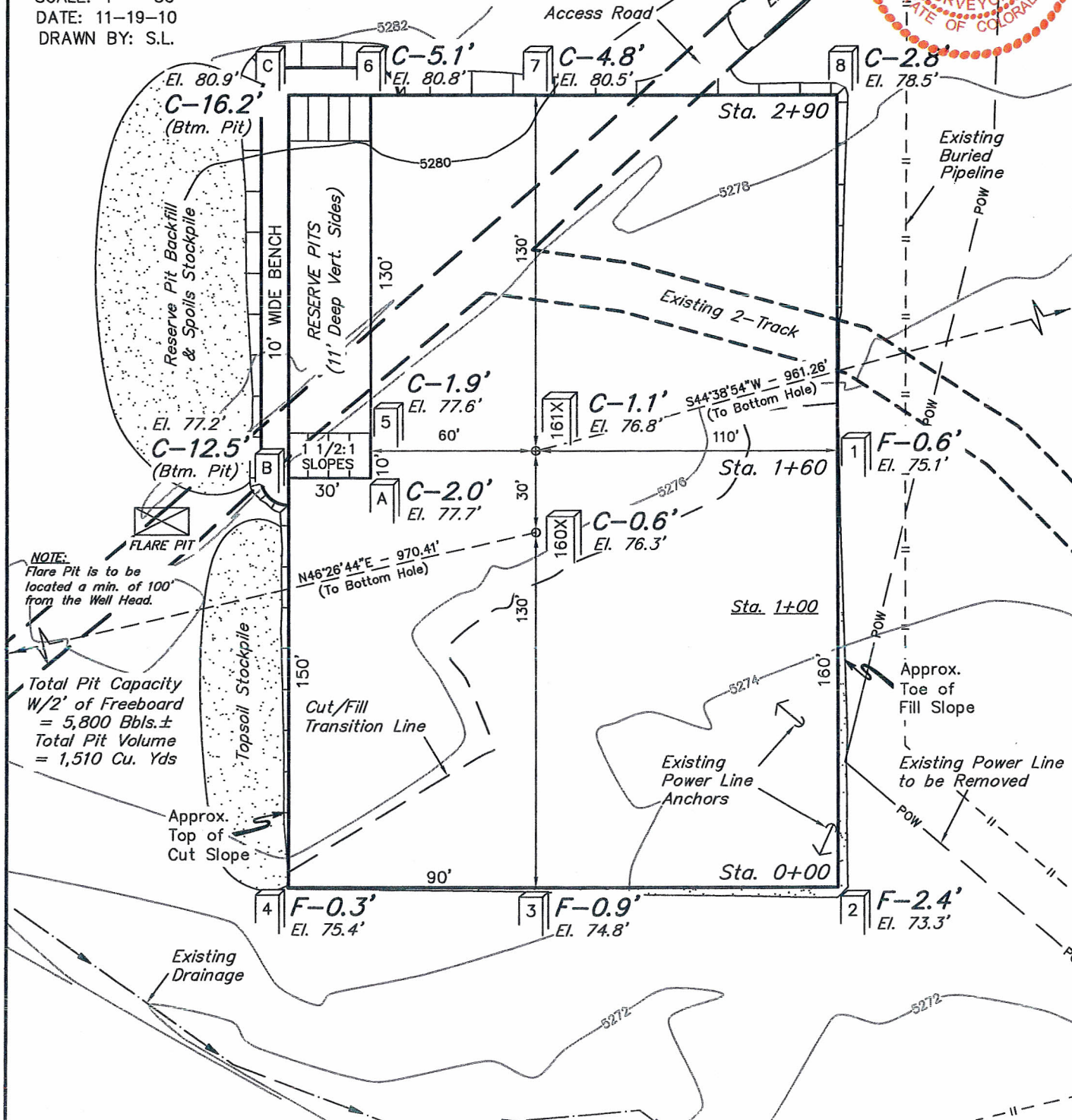
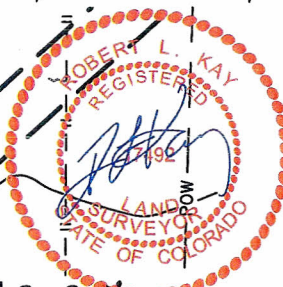
CONSTRUCTION LAYOUT FOR

FEE #160X & #161X
SECTION 28, T2N, R102W, 6th P.M.
SE 1/4 SE 1/4

FIGURE #1



SCALE: 1" = 50'
DATE: 11-19-10
DRAWN BY: S.L.



NOTE:
Flare Pit is to be located a min. of 100' from the Well Head.

Total Pit Capacity
W/2' of Freeboard
= 5,800 Bbbls.±
Total Pit Volume
= 1,510 Cu. Yds

Elev. Ungraded Ground At #161X Loc. Stake = 5276.8'
FINISHED GRADE ELEV. AT #16X LOC. STAKE = 5275.7'

UINTAH ENGINEERING & LAND SURVEYING
85 So. 200 East * Vernal, Utah 84078 * (435) 789-1017