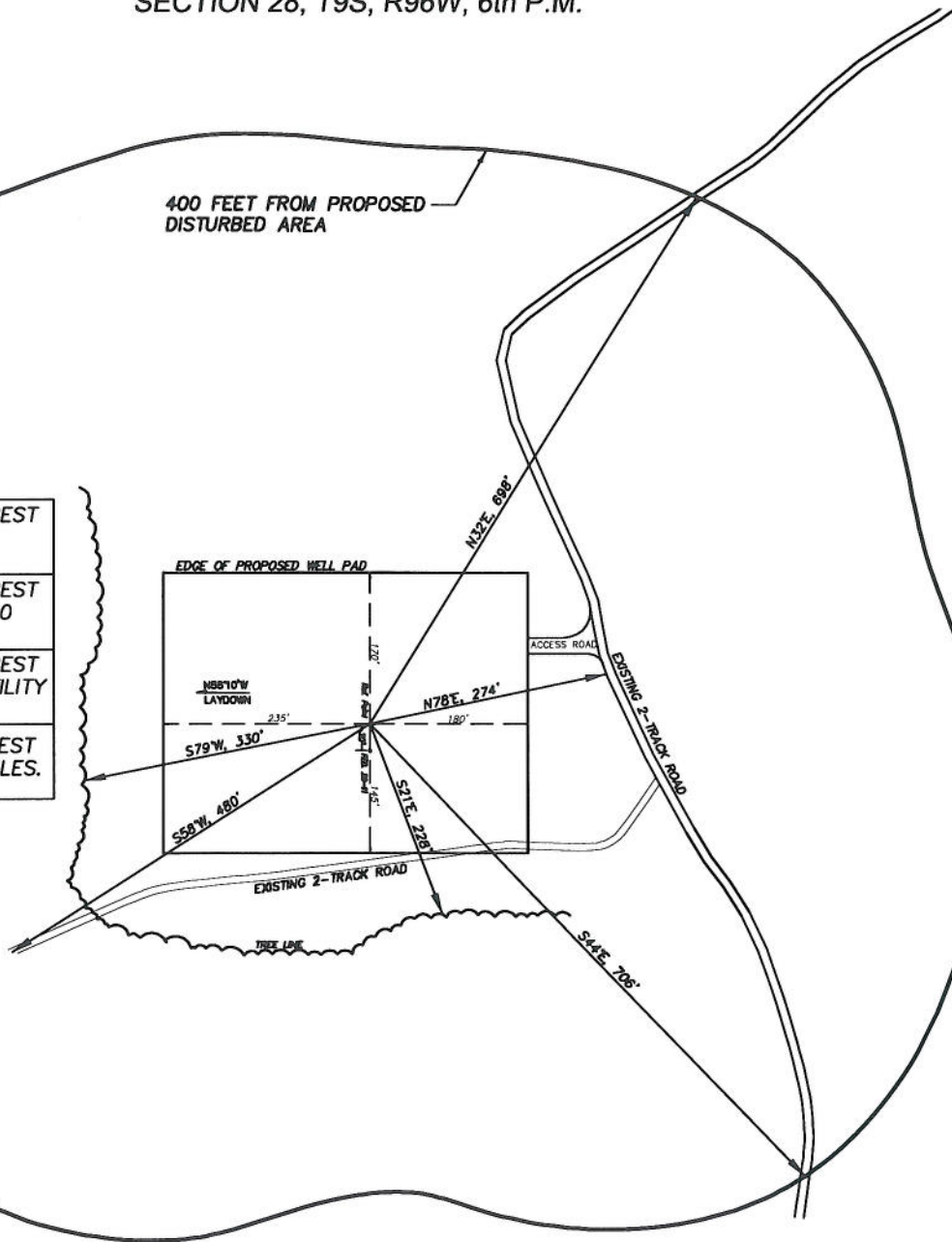


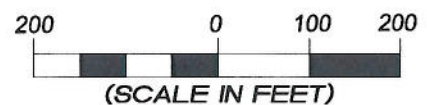
EnCana Oil & Gas (USA) Inc.
ADDENDUM TO LEGAL PLATS FOR
PL28SW Well Pad
 SECTION 28, T9S, R96W, 6th P.M.



DISTANCE TO NEAREST
PUBLIC ROAD IS
 $\pm 1220'$ FEET.
 DISTANCE TO NEAREST
BUILDING IS ± 2900
FEET.
 DISTANCE TO NEAREST
ABOVE GROUND UTILITY
IS $> 1000'$ FEET.
 DISTANCE TO NEAREST
RAILROAD IS ± 6 MILES.



Surface use of pad is grazing.
 Vegetation consists mainly of
 sage brush, oak brush and native
 grasses.



906 Main Street
 Evanston, Wyoming 82930
 Phone No. (307) 789-4545

Addendum		Scale: 1" = 200'	SHEET 1a OF 10
Project No.	09-04-32	Date Surveyed: 7/09/09	
Date Drawn:	7/29/09	Latest Revision Date: 12/14/10	