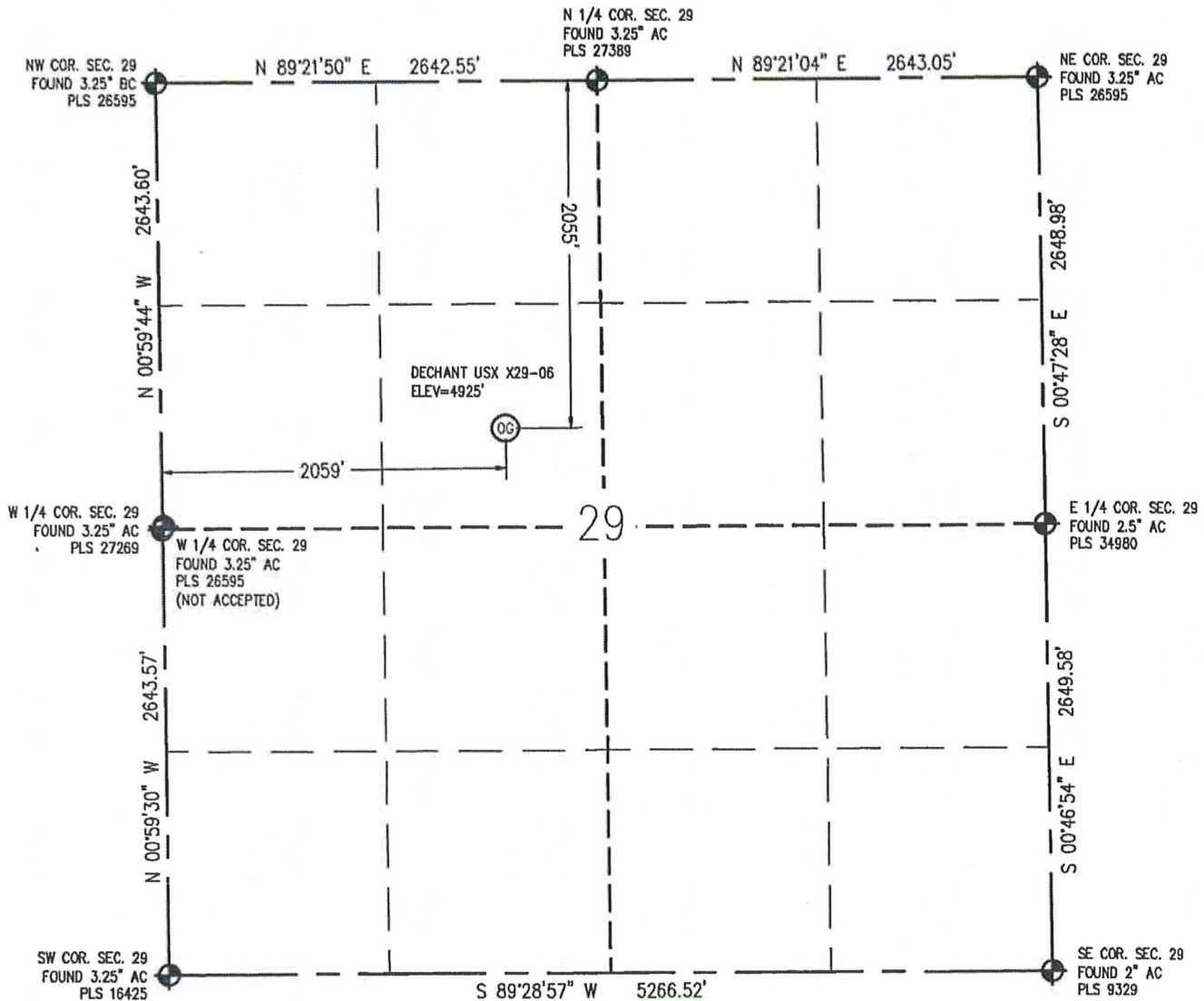


WELL LOCATION CERTIFICATE

THIS MAP DOES NOT REPRESENT A BOUNDARY SURVEY

SECTION 29
TOWNSHIP 2 NORTH
RANGE 65 WEST



IN ACCORDANCE WITH A REQUEST FROM SEAN CASPER - NOBLE ENERGY, BASELINE ENGINEERING CORP. HAS DETERMINED THE LOCATION OF THE DECHANT USX X29-06 TO BE 2059' FWL AND 2055' FNL, AS MEASURED AT NINETY (90) DEGREES FROM THE SECTION LINE OF SECTION 29, TOWNSHIP 2 NORTH, RANGE 65 WEST, 6TH PRINCIPAL MERIDIAN, WELD COUNTY, COLORADO.

I HEREBY CERTIFY THAT THIS WELL LOCATION CERTIFICATE WAS PREPARED BY ME, OR UNDER MY DIRECT SUPERVISION, THAT THE FIELD WORK WAS COMPLETED ON 11/05/2010, THAT IT IS NOT A LAND SURVEY PLAT OR AN IMPROVEMENT SURVEY PLAT, AND THAT IT IS NOT TO BE RELIED UPON FOR ESTABLISHMENT OF FENCE, BUILDING, OR OTHER FUTURE IMPROVEMENT LINES.

Scale 1" = 1000 ft

NOTES:

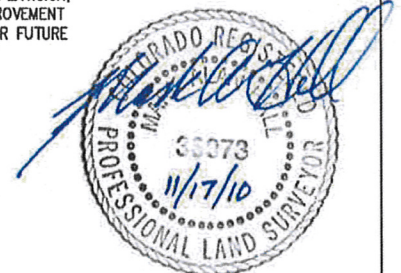
- 1) LAT/LONG SHOWN ARE BASED ON A GPS OBSERVATION (NAD83).
- 2) BEARINGS SHOWN ARE GRID BEARINGS OF THE COLORADO STATE PLANE COORDINATE SYSTEM, NORTH ZONE, NORTH AMERICAN DATUM 1983/2007.
- 3) GROUND ELEVATIONS ARE BASED ON A GPS OBSERVATION (NAVD 88 DATUM).
- 4) ALL DISTANCES SHOWN ARE FIELD MEASURED UNLESS OTHERWISE NOTED.
- 5) THE NEAREST EXISTING WELL IS: DECHANT USX 29-6 904' NORTHWEST.
- 6) IMPROVEMENTS: SEE VISIBLE IMPROVEMENTS EXHIBIT FOR ALL VISIBLE IMPROVEMENTS WITHIN 600' OF WELL HEAD.
- 7) SURFACE USE: IRRIGATED FIELD.

SURFACE HOLE:
LATITUDE: 40.111115° N
LONGITUDE: 104.689876° W
PDOP: 1.5
1/4, 1/4: SE1/4 NW1/4
NEAREST PROPERTY LINE: 590' S

LEGEND

- - FOUND/SET SURVEY MONUMENT PER MONUMENT RECORD EXCEPTIONS NOTED.
- - CALCULATED SURVEY MONUMENT POSITION
- (C) - CALCULATED DIMENSION

NOTICE: According to Colorado law you MUST commence any legal action based upon any defect in this W.L.C. within three years after you first discover such defect. In no event may any action based upon any defect in this W.L.C. be commenced more than ten years from this said date of the certification shown hereon.



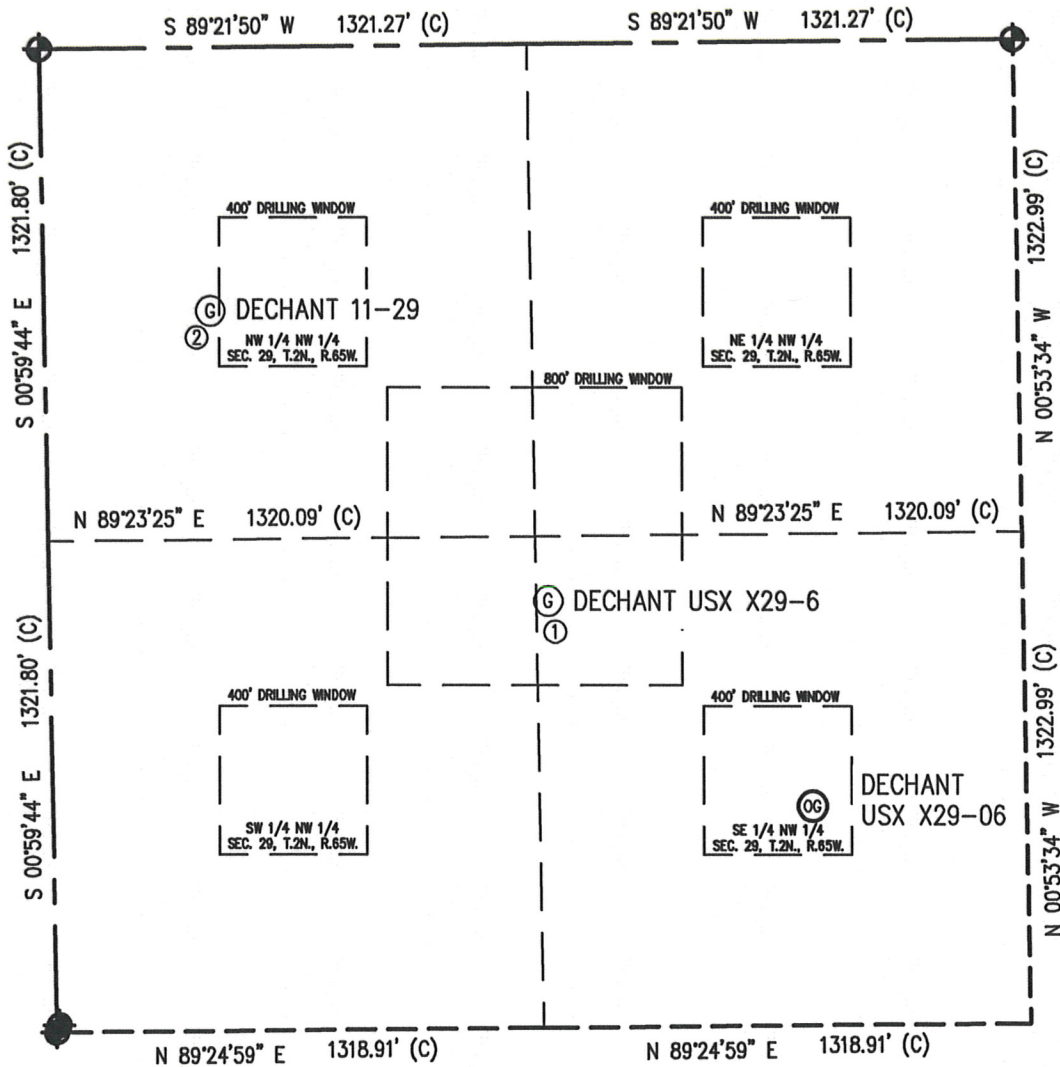
Mark A. Hall
Professional Land Surveyor Registration No. 36073
State of Colorado
FOR AND ON BEHALF OF BASELINE ENGINEERING CORP.

Completed
11/12/2010

JOB # NOB2N65W29-01

SITE SKETCH
DECHANT USX X29-06

SECTION 29
TOWNSHIP 2 NORTH
RANGE 65 WEST



①

DECHANT USX X29-6
SE 1/4 NW 1/4
1352' FWL
1496' FNL
EL=4929'
LATITUDE: 40.112647° N
LONGITUDE: 104.692419° W
PDOP: 2.4

②

DECHANT 11-29
NW 1/4 NW 1/4
451' FWL
708' FNL
EL=4940'
LATITUDE: 40.114805° N
LONGITUDE: 104.695664° W
PDOP: 2.4

NOTES:

- 1) THIS SKETCH DOES NOT REPRESENT A BOUNDARY SURVEY.
- 2) THE DATUM FOR THE LATITUDES AND LONGITUDES ON THIS SKETCH IS NAD83.



0 500
Scale 1" = 500 ft