



02054838

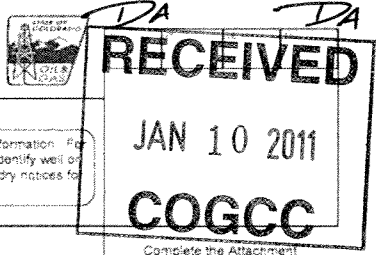
FORM 4

Page 1

State of Colorado Oil and Gas Conservation Commission

1120 Lincoln Street, Suite 801, Denver, Colorado 80203 Phone: (303)894-2100 Fax: (303)894-2109

SUNDRY NOTICE



Submit original plus one copy. This form is to be used for general, technical, and environmental sundry information. For proposed or completed operations, describe in full on Technical Information Page (Page 2 of this form). Identify well or other facility by API Number or by OGCC Facility ID. Operator shall send an informational copy of all sundry notices for wells located in High Density Areas to the Local Government Designee (Rule 603b.)

1. OGCC Operator Number: 16700 4. Contact Name: Julie Justus
2. Name of Operator: Chevron U.S.A. Inc.
3. Address: 760 Horizon Drive City: Grand Junction State: CO Zip: 81506 Phone: 970-267-6042 Fax: 970-245-6489
5. API Number: 05-045-16255 OGCC Facility ID Number: Survey Plat:
6. Well/Facility Name: SKR-598-25-CV 7. Well/Facility Number: 01 Directional Survey:
8. Location (Qtr/Sec, Twp, Rng, Meridian): SE/4 Sec. 25, 5S, 9E/W 6 PM Surface Eqpt Diagram:
9. County: Garfield 10. Field Name: Skurmer Ridge Technical Info Page: [x]
11. Federal, Indian or State Lease Number: Other: [x]

General Notice

CHANGE OF LOCATION: Attach New Survey Plat (a change of surface control is substantive and requires a new permit)
Change of Surface Footage from Exterior Section Lines
Change of Surface Footage to Exterior Section Lines
Change of Bottomhole Footage from Exterior Section Lines
Change of Bottomhole Footage to Exterior Section Lines
Bottomhole location Qtr/Sec, Twp, Rng, Mer
Latitude Distance to nearest property line Distance to nearest bldg, public rd, utility or RR
Longitude Distance to nearest lease line Is location in a High Density Area (rule 603b)? Yes/No
Ground Elevation Distance to nearest well same formation Surface owner consultation date:
GPS DATA: Date of Measurement PDOP Reading Instrument Operator's Name
CHANGE SPACING UNIT: Formation Formation Code Spacing order number Unit Acreage Unit configuration Remove from surface bond Signed surface use agreement attached
CHANGE OF OPERATOR (prior to drilling): Effective Date Plugging Bond: Blanket Individual
CHANGE WELL NAME: From To Effective Date NUMBER
ABANDONED LOCATION: Was location ever built? Yes No Is site ready for inspection? Yes No Date Ready for Inspection
NOTICE OF CONTINUED SHUT IN STATUS: Date well shut in or temporarily abandoned Has Production Equipment been removed from site? Yes No MIT required if shut in longer than two years. Date of last MIT
SPUD DATE: REQUEST FOR CONFIDENTIAL STATUS (5 mos from date casing set)
SUBSEQUENT REPORT OF STAGE, SQUEEZE OR REMEDIAL CEMENT WORK: Method used Cementing tool setting/depth Cement volume Cement top Cement bottom Date
RECLAMATION: Attach technical page describing final reclamation procedures per Rule 1004. Final reclamation will commence on approximately Final reclamation is completed and site is ready for inspection.

Technical Engineering/Environmental Notice

Notice of Intent Approximate Start Date Report of Work Done Date Work Completed: 12/13/2010
Details of work must be described in full on Technical Information Page (Page 2 must be submitted.)
Intent to Recomplete (submit form 2) Request to Vent or Flare E&P Waste Disposal
Change Drilling Plans Repair Well Beneficial Reuse of E&P Waste
Gross Interval Changed? Rule 502 variance requested Status Update/Change of Remediation Plans for Spills and Releases
Casing/Cementing Program Change Other: PLUG BACK

I hereby certify that the statements made in this form are, to the best of my knowledge, true, correct and complete

Signed: Julie Justus Date: 01/10/2011 Email: justus@chevron.com
Print Name: Julie Justus Title: Regulatory, Health & Environment Specialist

OGCC Approved: David Andrus PE II Date: 1/12/2011

CONDITIONS OF APPROVAL, IF ANY

TECHNICAL INFORMATION PAGE



RECEIVED  
JAN 10 2011  
COGCC

1. OGCC Operator Number	16700	API Number	05-045-16255
2. Name of Operator	Chevron U.S.A. Inc.		OGCC Facility ID #
3. Well/Facility Name	SKR-598-25-CV	Well/Facility Number	01
4. Location (QtrQtr Sec. Twp. Rng. Meridian)	SESW 25 5S 98W 6 PM		

This form is to be completed whenever a Summary Notice is submitted requiring detailed record of work to be performed or completed. This form shall be transmitted within 30 days of work completed as a subsequent report and must accompany Form 4, page 1.

5 DESCRIBE PROPOSED OR COMPLETED OPERATIONS

The SKR-25-CV-01 well was perforated approximately 200-feet below target interval and was producing large amounts of water and no gas, so the bottom portion of the well had to be plugged and abandoned and the well has been re-perforated in the correct interval.

In the process of abandoning the bottom portion of the well, the slinger was stuck in the Cast Iron Cement Retainer (CICR) and when it finally released, the CICR broke as they unstung from it and they could not pump cement into perforations. Upon verbal approval from Dave Andrews, Engineering Supervisor - Western Colorado COGCC, Chevron spotted 1 barrel (approx. 65-feet) of cement on top of the CICR to plug off the bottom portion of the well.

SKR-598-25-CV-01 Well information.

- API Number 05-045-~~06592~~ 16255
- Production casing setting depth - 6503'
- PBTD - 6453' pump-off bit sub w/ float at 6456'
- Gross perforation interval (top and bottom perf depths) 4221-6396 but cementing perfs shot off depth from 6238-6396 with bottom perf above this stage at 5925'
- Production casing top of cement - 1590'
- Current CICR depth - 6220'

NEW PBTD APPROXIMATELY  
6220' - 65' = 6155'

D.A.

**HALLIBURTON**

**RECEIVED**

JAN 10 2011

**COGCC**

**CHEVRON - MID-CONTINENT EBIZ  
11111 S WILCREST DR - DO NOT MAIL  
HOUSTON, Texas**

SKR  
SKR 598-25-CV-01

WORKOVER/WORK OVER

# Post Job Summary

## Cement Squeeze, Water Shut-Off

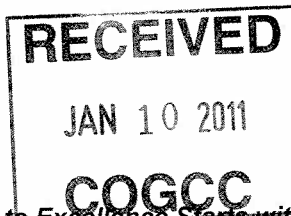
Prepared for:  
Date Prepared:  
Version: 1

Service Supervisor:

Submitted by:

**HALLIBURTON**

HALLIBURTON



Cementing Job Summary

The Road to Excellence Starts with Safety

Sold To #: 338668	Ship To #: 2666444	Quote #:	Sales Order #: 7835786
Customer: CHEVRON - MID-CONTINENT EBIZ		Customer Rep: Hejl, Kieth	
Well Name: SKR	Well #: 598-25-CV-01	API/UWI #: 05-045-16255	
Field: SKINNER RIDGE	City (SAP): PARACHUTE	County/Parish: Garfield	State: Colorado
Lat: N 39.578 deg. OR N 39 deg. 34 min. 41.502 secs.		Long: W 108.341 deg. OR W -109 deg. 39 min. 31.244 secs.	
Contractor: WORKOVER	Rig/Platform Name/Num: WORK OVER		
Job Purpose: Cement Squeeze, Water Shut-Off			
Well Type: Development Well	Job Type: Cement Squeeze, Water Shut-Off		
Sales Person: DUNNING, DUSTIN	Srvc Supervisor: TRIPLETT, MICHEAL	MBU ID Emp #: 447908	

Job Personnel

HES Emp Name	Exp Hrs	Emp #	HES Emp Name	Exp Hrs	Emp #	HES Emp Name	Exp Hrs	Emp #
blackmore, jason	7	287012	hone, Aaron	6	381285	jamison, bill	7	229155
TRIPLETT, MICHEAL Anthony	777	447908			447908	yutzy, brian	6	478510

Equipment

HES Unit #	Distance-1 way	HES Unit #	Distance-1 way	HES Unit #	Distance-1 way	HES Unit #	Distance-1 way
10248057	60 mile	10551730C	60 mile	10973571	60 mile	11259881	60 mile

Job Hours

Date	On Location Hours	Operating Hours	Date	On Location Hours	Operating Hours	Date	On Location Hours	Operating Hours
12/13/10	6	.5	12/14/10	7	1			

TOTAL Total is the sum of each column separately

Job

Job Times

Formation Name	Date	Time	Time Zone
Formation Depth (MD) Top Bottom	Called Out	13 - Dec - 2010	07:00 MST
Form Type BHST	On Location	13 - Dec - 2010	11:30 MST
Job depth MD 6224. ft Job Depth TVD 6224. ft	Job Started	13 - Dec - 2010	17:17 MST
Water Depth Wk Ht Above Floor 3. ft	Job Completed	13 - Dec - 2010	17:30 MST
Perforation Depth (MD) From To	Departed Loc	13 - Dec - 2010	19:00 MST

Well Data

Description	New / Used	Max pressure psig	Size in	ID in	Weight lbm/ft	Thread	Grade	Top MD ft	Bottom MD ft	Top TVD ft	Bottom TVD ft

Tools and Accessories

Type	Size	Qty	Make	Depth	Type	Size	Qty	Make	Depth	Type	Size	Qty	Make
Guide Shoe					Packer					Top Plug			
Float Shoe					Bridge Plug					Bottom Plug			
Float Collar					Retainer					SSR plug set			
Insert Float										Plug Container			
Stage Tool										Centralizers			

Miscellaneous Materials

Gelling Agt	Conc	Surfactant	Conc	Acid Type	Qty	Conc	%
Treatment Fld	Conc	Inhibitor	Conc	Sand Type	Size	Qty	

Fluid Data

Stage/Plug #: 1											
Fluid #	Stage Type	Fluid Name			Qty	Qty uom	Mixing Density lbm/gal	Yield ft <sup>3</sup> /sk	Mix Fluid Gal/sk	Rate bbl/min	Total Mix Fluid Gal/sk

Stage/Plug #: 1										
Fluid #	Stage Type	Fluid Name	Qty	Qty uom	Mixing Density lbm/gal	Yield ft3/sk	Mix Fluid Gal/sk	Rate bbl/min	Total Mix Fluid Gal/sk	
1	Water Spacer		30.00	bbl	.	.0	.0	.0		
2	SqueezeCem	SQUEEZECEM (TM) SYSTEM (452971)	100.0	sacks	15.8	1.15	4.96		4.96	
	4.96 Gal	FRESH WATER								
3	Displacement		24.00	bbl	8.33	.0	.0	.0		
Calculated Values			Pressures			Volumes				
Displacement	23.2	Shut In: Instant		Lost Returns		Cement Slurry	2	Pad		
Top Of Cement	?	5 Min		Cement Returns	.2	Actual Displacement	23.2	Treatment		
Frac Gradient		15 Min		Spacers		Load and Breakdown		Total Job	30	
Rates										
Circulating	4	Mixing	4	Displacement	4	Avg. Job	4			
Cement Left In Pipe	Amount	0 ft	Reason	Shoe Joint						
Frac Ring # 1 @	ID	Frac ring # 2 @	ID	Frac Ring # 3 @	ID	Frac Ring # 4 @	ID			
The Information Stated Herein Is Correct				Customer Representative Signature						

**RECEIVED**  
 JAN 10 2011  
**COGCC**

# HALLIBURTON

## Cementing Job Log

The Road to Excellence Starts with Safety

Sold To #: 338668	Ship To #: 2666444	Quote #:	Sales Order #: 7835786
Customer: CHEVRON - MID-CONTINENT EBIZ		Customer Rep: Hejl, Kieth	
Well Name: SKR	Well #: 598-25-CV-01	API/UWI #: 05-045-16255	
Field: SKINNER RIDGE	City (SAP): PARACHUTE	County/Parish: Garfield	State: Colorado
<b>Legal Description:</b>			
Lat: N 39.578 deg. OR N 39 deg. 34 min. 41.502 secs.		Long: W 108.341 deg. OR W -109 deg. 39 min. 31.244 secs.	
Contractor: WORKOVER	Rig/Platform Name/Num: WORK OVER		
Job Purpose: Cement Squeeze, Water Shut-Off			Ticket Amount:
Well Type: Development Well	Job Type: Cement Squeeze, Water Shut-Off		
Sales Person: DUNNING, DUSTIN	Srvc Supervisor: TRIPLETT, MICHEAL	MBU ID Emp #: 447908	

Activity Description	Date/Time	Cht #	Rate bbl/min	Volume bbl		Pressure psig		Comments
				Stage	Total	Tubing	Casing	
Call Out	12/13/2010 07:00							TT:6224', PERFS FROM 6238' TO 6395', IN 4.5", 11.6# CASING
Depart Yard Safety Meeting	12/13/2010 10:00							
Arrive at Location from Other Job or Site	12/13/2010 11:30							
Assessment Of Location Safety Meeting	12/13/2010 11:45							
Rig-Up Equipment	12/13/2010 12:00							
Standby Rig	12/13/2010 12:30							RIG RUNNING TUBING INTO HOLE TRYING TO SET TOOL
Pre-Job Safety Meeting	12/13/2010 15:11							
Start Job	12/13/2010 17:17							
Prime Pumps	12/13/2010 17:18		2	2				PUMP 2BBLs AHEAD
Test Lines	12/13/2010 17:21					3500.0		
Injection Test	12/13/2010 17:26		1	1		4000.0		PRESSURING UP TUBING AND TOOL TO SEE IF FLUID WILL MOVE THROUGH TOOL
Release Tubing Pressure	12/13/2010 17:30							COULD NOT PUMP THROUGH TOOL
End Job	12/13/2010 17:31							END JOB SET
Pre-Rig Down Safety Meeting	12/13/2010 17:35							CREW RIG DOWN IRON AND FLOOR
Crew Leave Location	12/13/2010 19:01							

**RECEIVED**  
 JAN 10 2011  
**COGCC**

Sold To #: 338668

Ship To #: 2666444

Quote #:

Sales Order #:

7835786

SUMMIT Version: 7.20.130

Tuesday, December 14, 2010 03:44:00

# HALLIBURTON

## Cementing Job Log

Activity Description	Date/Time	Cht #	Rate bbl/min	Volume bbl		Pressure psig		Comments
				Stage	Total	Tubing	Casing	
Start Job	12/14/2010 10:28							TB SET @ 6114
Prime Pumps	12/14/2010 13:02		2	2				
Test Lines	12/14/2010 13:05		1	1			4000.0	
Pump Spacer 1	12/14/2010 13:28		2	5			200.0	FRESH WATER AHEAD OF CEMENT
Pump Cement	12/14/2010 13:29		2	2			450.0	15 SACKS @ 15.8, 1.15 YIELD, 4.96 GAL/SACK
Pump Displacement	12/14/2010 13:32		2	23.2			550.0	FRESH WATER BEHIND CEMENT TO BALANCE PLUG
Shutdown	12/14/2010 13:55							SHUT TURNED OVER TO RIG TO REVERSE CIRCULATE, GOT .2BBLS BACK TO PIT
End Job	12/14/2010 13:57							
Post-Job Safety Meeting (Pre Rig-Down)	12/14/2010 13:59							
Pre-Rig Down Safety Meeting	12/14/2010 15:00							
Pre-Convoy Safety Meeting	12/14/2010 15:30							
Crew Leave Location	12/14/2010 15:45							THANKS FOR USING HALLIBURTON CEMENT GRAND JUNCTION, CO MIKE TRIPLETT AND CREW

**RECEIVED**  
 JAN 10 2011  
**COGCC**

Sold To # : 338668

Ship To # : 2666444

Quote # :

Sales Order # :

7835786

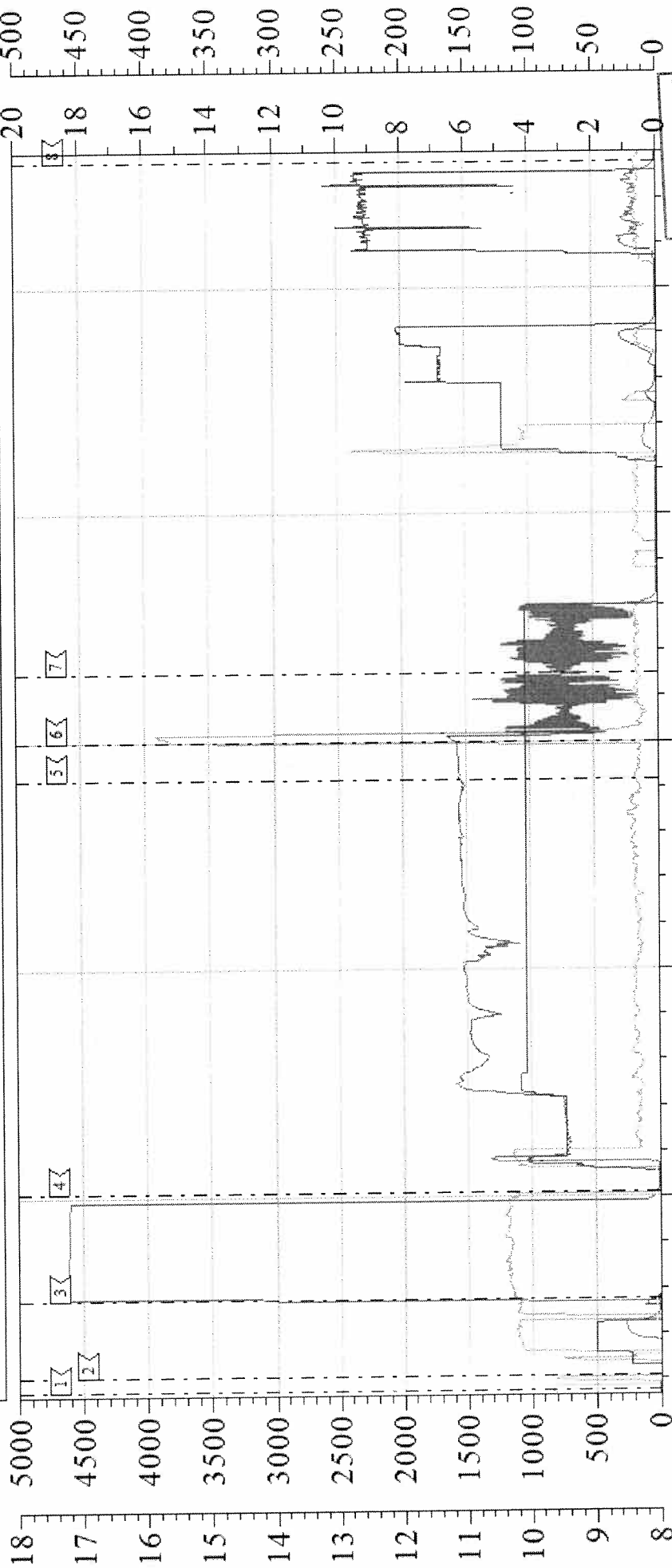
SUMMIT Version: 7.20.130

Tuesday, December 14, 2010 03:44:00

# CHEVRON

## SQUEEZE SKR 598-25-CV-01

A \_\_\_\_\_  
 B \_\_\_\_\_  
 C \_\_\_\_\_  
 D \_\_\_\_\_



**RECEIVED**  
 JAN 10 2011  
**COGCC**

Local Event Log			
<input type="checkbox"/> 1 START JOB	13:01:30	<input type="checkbox"/> 2 PRIMPUMPS AND LINES	13:02:07
<input type="checkbox"/> 3		<input type="checkbox"/> 3 TESTLINE	13:05:31
<input type="checkbox"/> 4 CIRCULATE WELL	13:10:13	<input type="checkbox"/> 5 START SPACER	13:28:21
<input type="checkbox"/> 6		<input type="checkbox"/> 6 START CEMENT	13:29:59
<input type="checkbox"/> 7 START DISPLACEMENT	13:22:57	<input type="checkbox"/> 8 SHUTDOWN	13:55:33

Customer: CHEVRON Well Description: SKR-598-25-CV-01 Company Rep: LOREN DEMERS	Job Date: 14-Dec-2010 Job Type: SQUEEZE Cement Supervisor: MIKE TRIPLETT	Sales Order #: 7835786 ADC Used: YES Elite #: 2 MIKE TRIPLETT
--------------------------------------------------------------------------------------	--------------------------------------------------------------------------------	---------------------------------------------------------------------

HALLIBURTON  
 OptiCem v6.3.4  
 14-Dec-10 15:20

**RECEIVED**

JAN 10 2011

**COGCC**

# Job Log

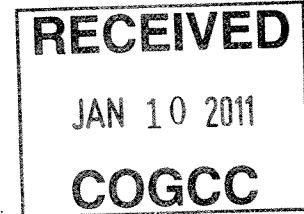
1/06/2011

## Sales Order

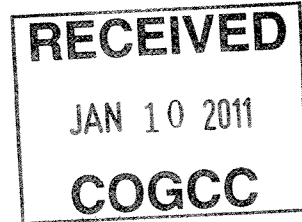
Number:	7832119	Well	
Primary BOM:	7550 - PSL ST RETRIEVABLE TOOL SERVICE- BOM	Ship To:	2666444 - CHEVRON SKR-598-25-CV-01,GARFIELD
Sold To:	338668 - CHEVRON - MID-CONTINENT EBIZ	Description:	CHEVRON SKR-598-25-CV-11,GARFIELD
Bill To:	5030413 - CHEVRON *E-Procurement	Address:	PARACHUTE, GARFIELD, CO
Plant:	0205 - Grand Junction, CO, USA	Details:	Gas - Unknown Well Type - Land
PO/AFE Num:		Well ID:	050451625900

Operator	Date-Time	Activity	Remarks	Rate (bpm)	Volume (gal)(bbl)	Tubing Pressure (psi)	Casing Pressure (psi)
Cholas, Nicholas Don	12/13/2010 07:00	1 - START JOB HOURS					
Cholas, Nicholas Don	12/13/2010 08:00	2 - ON LOCATION					
Cholas, Nicholas Don	12/13/2010 08:01	3 - JOB ACTIVITY	UPON ARRIVAL RIG CRE PREPARING TO TOH WITH PRODUCTION STRING				
Cholas, Nicholas Don	12/13/2010 09:57	3 - JOB ACTIVITY	RIG CREW BEGINS TOH				
Cholas, Nicholas Don	12/13/2010 11:45	3 - JOB ACTIVITY	TUBING OUT OF HOLE NU 4 1/2 MSTWITH SVB CMRT TIH				
Cholas, Nicholas Don	12/13/2010 13:35	3 - JOB ACTIVITY	ON DEPTH @6224' START SETTING PROCEDURES WIR UP STROKE 42K DN STROKE 22K				

Operator	Date-Time	Activity	Remarks	Rate (bpm)	Volume (gal)(bbl)	Tubing Pressure (psi)	Casing Pressure (psi)
Cholas, Nicholas Don	12/13/2010 13:45	3 - JOB ACTIVITY	<p>AFTER SETTING PROCEEDURE WIRUP SEEMED TO SETTLE @ 32K( WELL BORE HAS A S CURVE DEVIATION @ APPROXIMATELY 1000' DEVIATES 17 DEGREES THEN AT 3300 FTGOSE BACK VERTICAL) HAVING TROUBLE</p> <p>AFTER 35 TURNS TO RIGHT HAVING TROUBLE GETTING TOOLS TO START PULLING OVER GO THROUGH SETTING PROCEDURE AGAIN HAVE TO USE LOW GEAR ON TONGS DUE TO TUBING DRAG START PULLING OVER NOW PULL TO SHEAR VALUE 1/3 AT A TIME TO PACK OFF ELEMENTS DID NOT SHEAR</p> <p>CONTINUE TO TRY AND SHEAR SLEEVE ON CICR WORKING NOW BETWEEN 50 TO 80K NOTHING CONTINUE WORKING NOW UP TO 90K WIR WORKING BETWEEN 50K AND 90 K SET DOWN TO 5K OVER STRING @32K PUT 6 TO 10 MORE TURNS WORKED UP TO 90K CONTINUE WITH</p>				
Cholas, Nicholas Don	12/13/2010 14:15	3 - JOB ACTIVITY	<p>CONTINUE TO TRY AND SHEAR SLEEVE ON CICR WORKING NOW BETWEEN 50 TO 80K NOTHING CONTINUE WORKING NOW UP TO 90K WIR WORKING BETWEEN 50K AND 90 K SET DOWN TO 5K OVER STRING @32K PUT 6 TO 10 MORE TURNS WORKED UP TO 90K CONTINUE WITH</p>				
Cholas, Nicholas Don	12/13/2010 14:40	3 - JOB ACTIVITY	<p>CONTINUE TO TRY AND SHEAR SLEEVE ON CICR WORKING NOW BETWEEN 50 TO 80K NOTHING CONTINUE WORKING NOW UP TO 90K WIR WORKING BETWEEN 50K AND 90 K SET DOWN TO 5K OVER STRING @32K PUT 6 TO 10 MORE TURNS WORKED UP TO 90K CONTINUE WITH</p>				



Operator	Date-Time	Activity	Remarks	Rate (bpm)	Volume (gal)(bbl)	Tubing Pressure (psi)	Casing Pressure (psi)
Cholas, Nicholas Don	12/13/2010 15:30	3 - JOB ACTIVITY	<p>THIS PROCEDURE RIG UP KELLY HOSE TO PUMP DOWN TUBING TRY TO PRESSURE UP WHILE PULLING INTO RETAINER SHEAR RING PRESSURED UP TO 2500 WORKED TUBING UP AND DOWN DURING THIS PROCESS</p> <p>HAD WIR AT 90K AND 2500 PSI ON TUBING SET BRAKE AND SHEARED SLEEVE LAST PRESSURE PULL UP THEN TIH MAKE SURE PKR NOT ON STRING HANGING US UP NO PROBLEMS PULL UP PUT 30 ROUNDS RIGHT TIH AND STING INTO CMRT</p> <p>TRY PUMPING TO GET INJECTION BUT PRESSURED UP STING OUT PUMP ON TUBING IT IS CLEARTRY PUMPING @ 1/2 BBL/MIN AND STUNG INTO CMRT PRESSURED UP AGAIN</p> <p>STING OUT OF CMRT PULL UP 45+FT PUT 45 TURNS TO RIGHT STING BACK INTO CMRT HOOK UP HALLIBURTON CMT THEY TRIED</p>				
Cholas, Nicholas Don	12/13/2010 15:55	3 - JOB ACTIVITY					
Cholas, Nicholas Don	12/13/2010 16:15	3 - JOB ACTIVITY					
Cholas, Nicholas Don	12/13/2010 16:30	3 - JOB ACTIVITY					



Operator	Date-Time	Activity	Remarks	Rate (bpm)	Volume (gal)(bbl)	Tubing Pressure (psi)	Casing Pressure (psi)
Cholas, Nicholas Don	12/13/2010 17:40	3 - JOB ACTIVITY	PUMPING ON PRESSURED UP AGIN AND CLIMBING @ 4000 PSI SHUT DOWN STING OUT OF CMRT PULL 32 STANDS TOGET ABOVE PERFS SHUT DOWN FOR EVE WILL POH IN MORNING MAY SPOT CMT ON TOP OF RET THEN				
Cholas, Nicholas Don	12/13/2010 18:50	4 - LEAVE LOCATION					
Cholas, Nicholas Don	12/13/2010 19:50	5 - STOP JOB HOURS					
Cholas, Nicholas Don	12/14/2010 06:30	1 - START JOB HOURS					
Cholas, Nicholas Don	12/14/2010 07:30	2 - ON LOCATION					
Cholas, Nicholas Don	12/14/2010 07:31	3 - JOB ACTIVITY	RIG CREW FINISH TOH WITH TUBING AND MST				
Cholas, Nicholas Don	12/14/2010 08:30	3 - JOB ACTIVITY	OUT OF HOLE WITH MST EVERYTHING LOOKS NORMAL WITH MST				
Cholas, Nicholas Don	12/14/2010 08:31	4 - LEAVE LOCATION					
Cholas, Nicholas Don	12/14/2010 09:31	5 - STOP JOB HOURS					
Cholas, Nicholas Don	12/14/2010 09:32	6 - JOB LOG COMPLETE					

