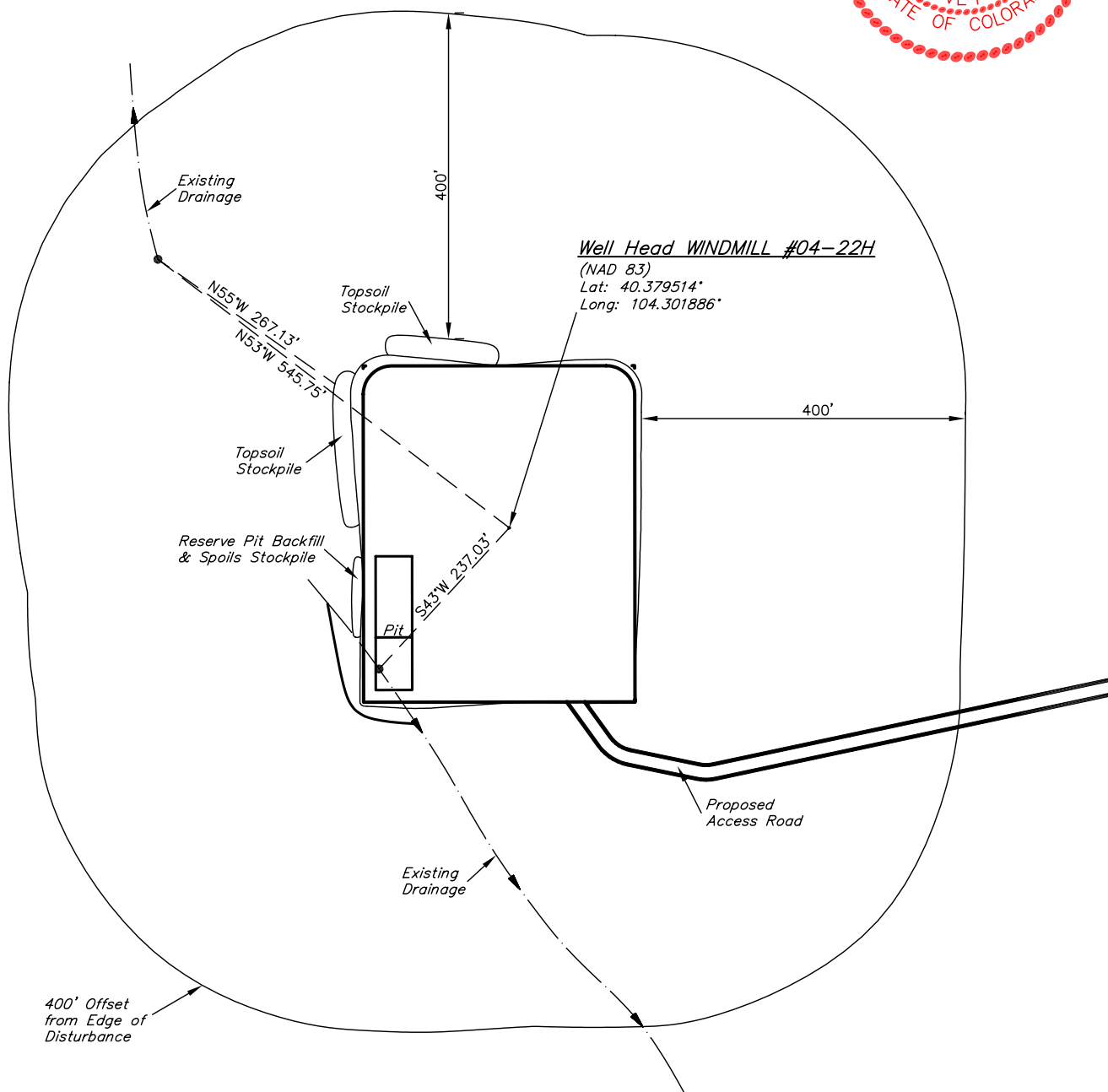




EOG RESOURCES, INC.
ADDENDUM TO LEGAL PLAT FOR
WINDMILL #04-22H
SECTION 22, T5N, R62W, 6th. P.M.
501' FSL 450' FEL

SCALE: 1" = 200'
DATE: 12-2-10
DRAWN BY: J.I.



EOG RESOURCES, INC.

CONSTRUCTION LAYOUT FOR

WINDMILL #04-22H

SECTION 22, T5N, R62W, 6th. P.M.

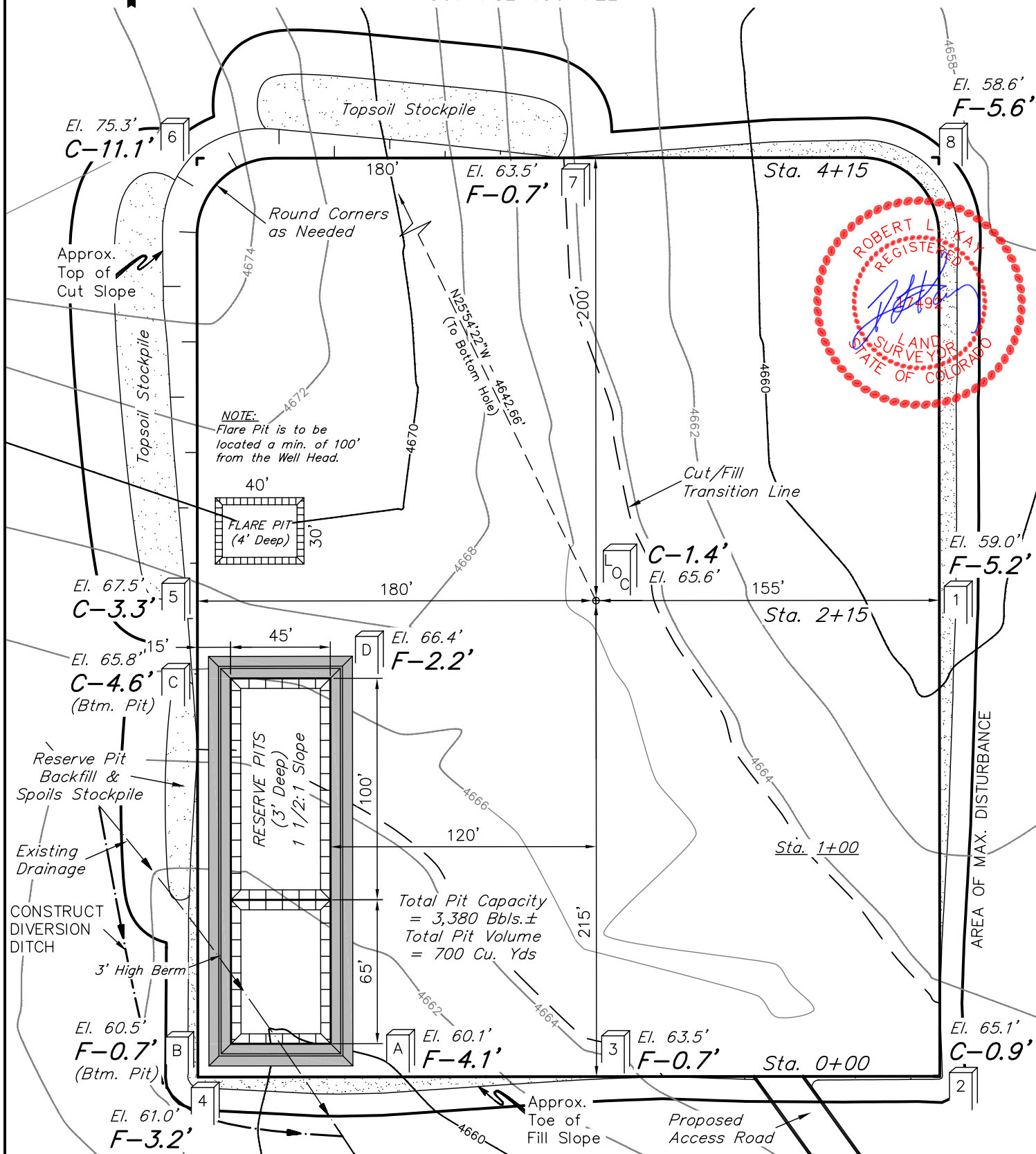
501' FSL 450' FEL

FIGURE #1

SCALE: 1" = 60'

DATE: 12-2-10

DRAWN BY: J.I.



Elev. Ungraded Ground At Loc. Stake = 4665.6'

FINISHED GRADE ELEV. AT LOC. STAKE = 4664.2'

UINTAH ENGINEERING & LAND SURVEYING

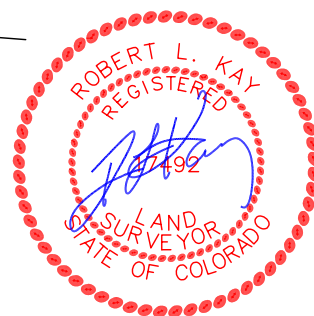
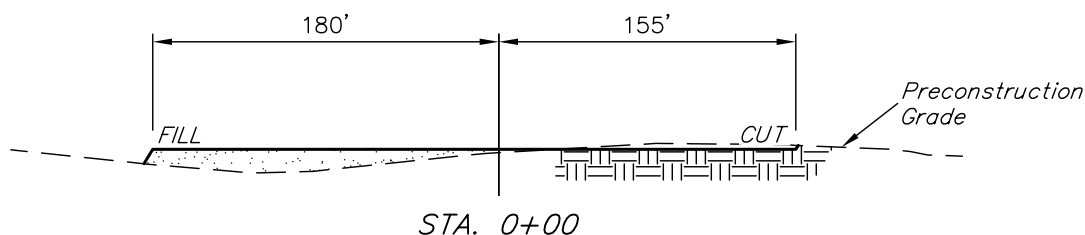
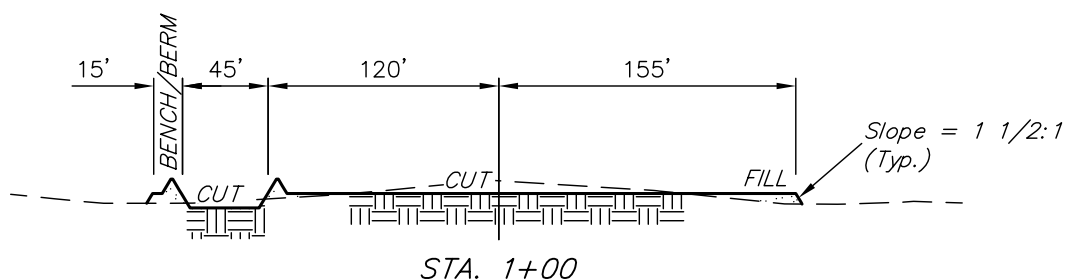
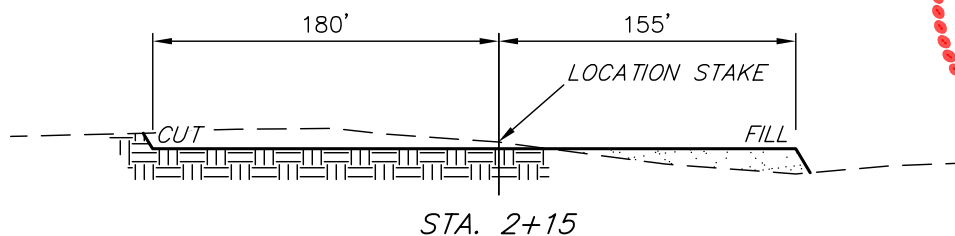
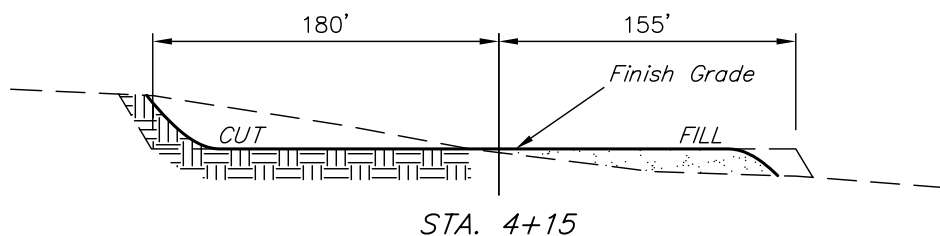
85 So. 200 East * Vernal, Utah 84078 * (435) 789-1017

1" = 40'
X-Section
Scale
1" = 100'

DATE: 12-2-10
DRAWN BY: J.I.

EOG RESOURCES, INC.
CONSTRUCTION LAYOUT CROSS SECTIONS FOR
WINDMILL #04-22H
SECTION 22, T5N, R62W, 6th. P.M.
501' FSL 450' FEL

FIGURE #2



NOTE:

Topsoil should not be Stripped Below Finished Grade on Substructure Area.

APPROXIMATE ACREAGES

WELL SITE DISTURBANCE = ± 4.100 ACRES
ACCESS ROAD DISTURBANCE = ± 17.088 ACRES
TOTAL = ± 21.188 ACRES

* NOTE:
FILL QUANTITY INCLUDES 5% FOR COMPACTION

APPROXIMATE YARDAGES

(6") Topsoil Stripping = 2,790 Cu. Yds.
Remaining Location = 8,500 Cu. Yds.
TOTAL CUT = 11,290 CU.YDS.
FILL = 8,150 CU.YDS.

EXCESS MATERIAL = 3,140 Cu. Yds.
Topsoil & Pit Backfill = 3,140 Cu. Yds.
(1/2 Pit Vol.)
EXCESS UNBALANCE = 0 Cu. Yds.
(After Interim Rehabilitation)

UINTAH ENGINEERING & LAND SURVEYING
85 So. 200 East * Vernal, Utah 84078 * (435) 789-1017



EOG RESOURCES, INC.
TYPICAL RIG LAYOUT FOR
WINDMILL #04-22H
SECTION 22, T5N, R62W, 6th. P.M.
501' FSL 450' FEL

FIGURE #3

SCALE: 1" = 60'
DATE: 12-2-10
DRAWN BY: J.I.

