

LEGEND:

 PROPOSED LOCATION

EOG RESOURCES, INC.

WINDMILL #04-22H
SECTION 22, T5N, R62W, 6th P.M.
501' FSL 450' FEL



Utah Engineering & Land Surveying
 85 South 200 East Vernal, Utah 84078
 (435) 789-1017 * FAX (435) 789-1813

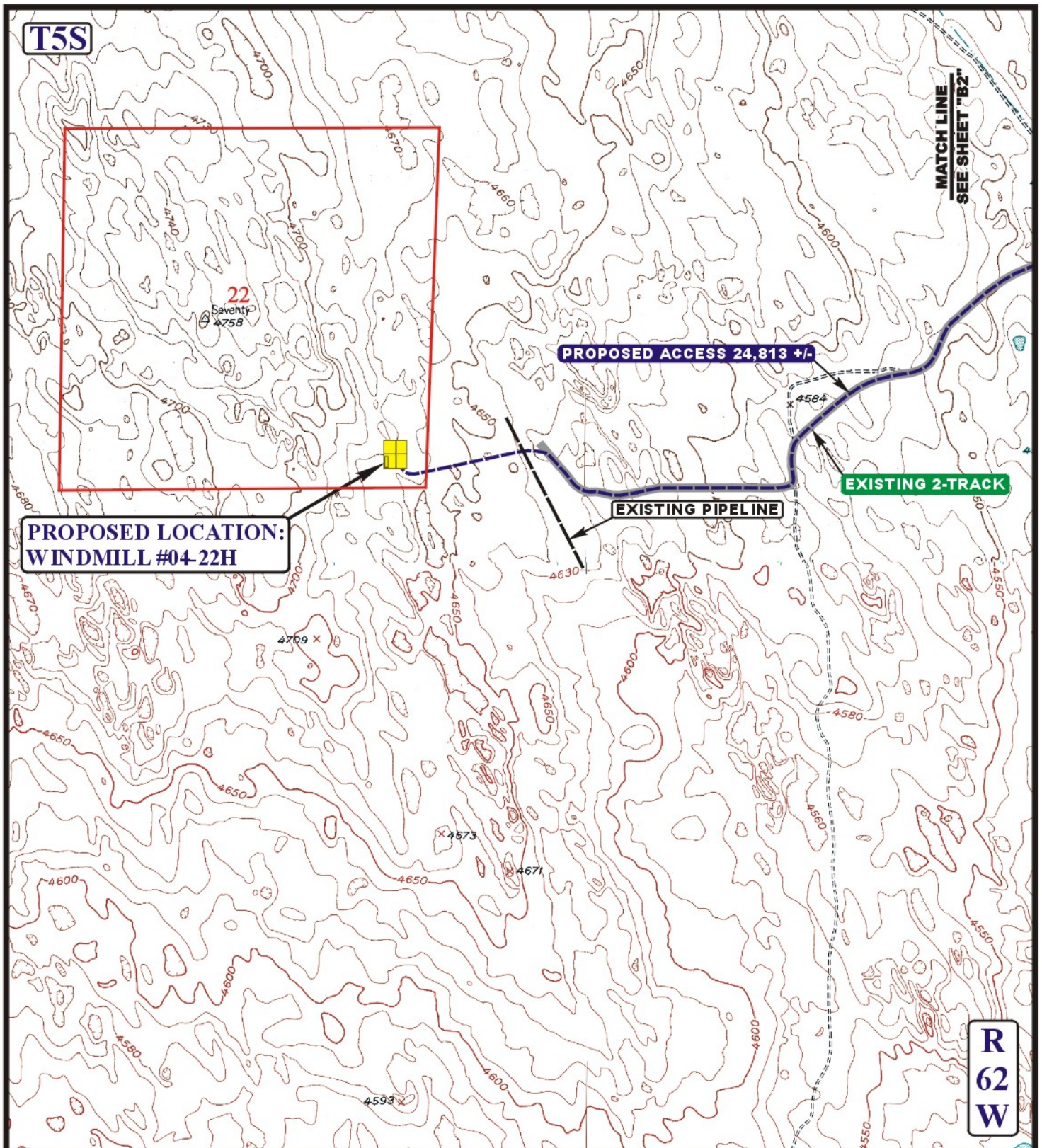


ACCESS ROAD
M A P

12 06 10
 MONTH DAY YEAR

SCALE: 1:100,000 DRAWN BY: Z.L. REVISED: 00-00-00





LEGEND:

- EXISTING ROAD
- - - - - PROPOSED ACCESS ROAD
- ===== EXISTING 2-TRACK
- 1** 18" CMP REQUIRED

UES Utah Engineering & Land Surveying
85 South 200 East Vernal, Utah 84078
(435) 789-1017 * FAX (435) 789-1813



EOG RESOURCES, INC.

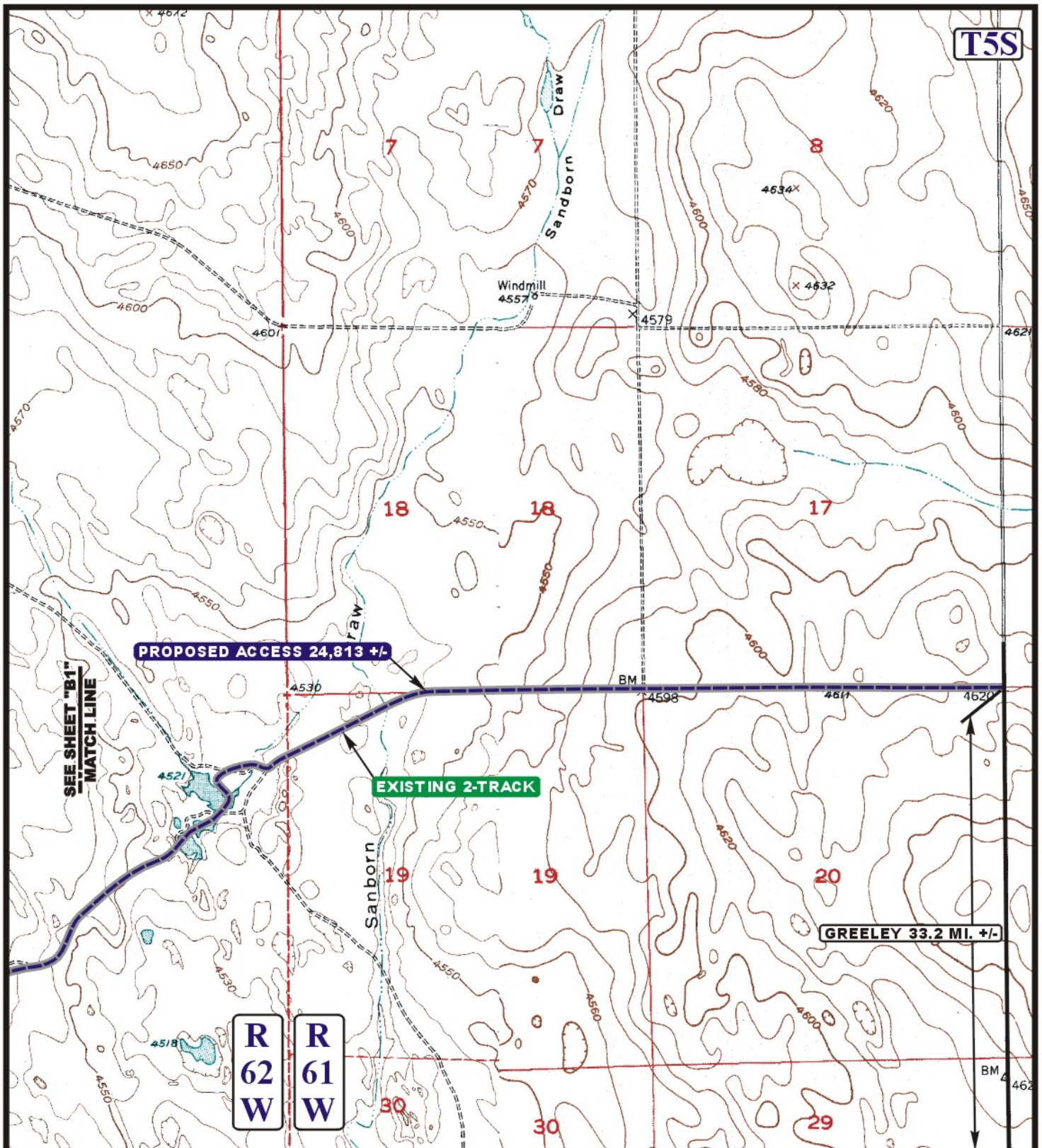
WINDMILL #04-22H
SECTION 22, T5N, R62W, 6th P.M.
501' FSL 450' FEL

**ACCESS ROAD
MAP**

12 06 10
MONTH DAY YEAR

SCALE: 1" = 2000' DRAWN BY: Z.L. REVISED: 00-00-00

B1
TOPO



LEGEND:

- EXISTING ROAD
- PROPOSED ACCESS ROAD
- EXISTING 2-TRACK
- 18" CMP REQUIRED



Uintah Engineering & Land Surveying
85 South 200 East Vernal, Utah 84078
(435) 789-1017 * FAX (435) 789-1813



EOG RESOURCES, INC.

WINDMILL #04-22H
SECTION 22, T5N, R62W, 6th P.M.
501' FSL 450' FEL

ACCESS ROAD
MAP

12 06 10
MONTH DAY YEAR

B2
TOPO

SCALE: 1" = 2000' DRAWN BY: Z.L. REVISED: 00-00-00