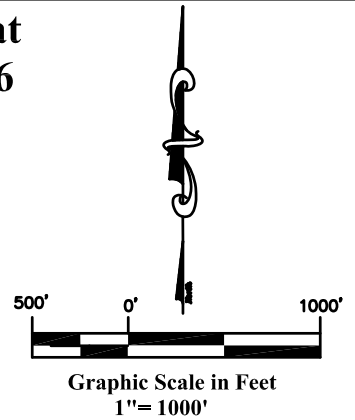
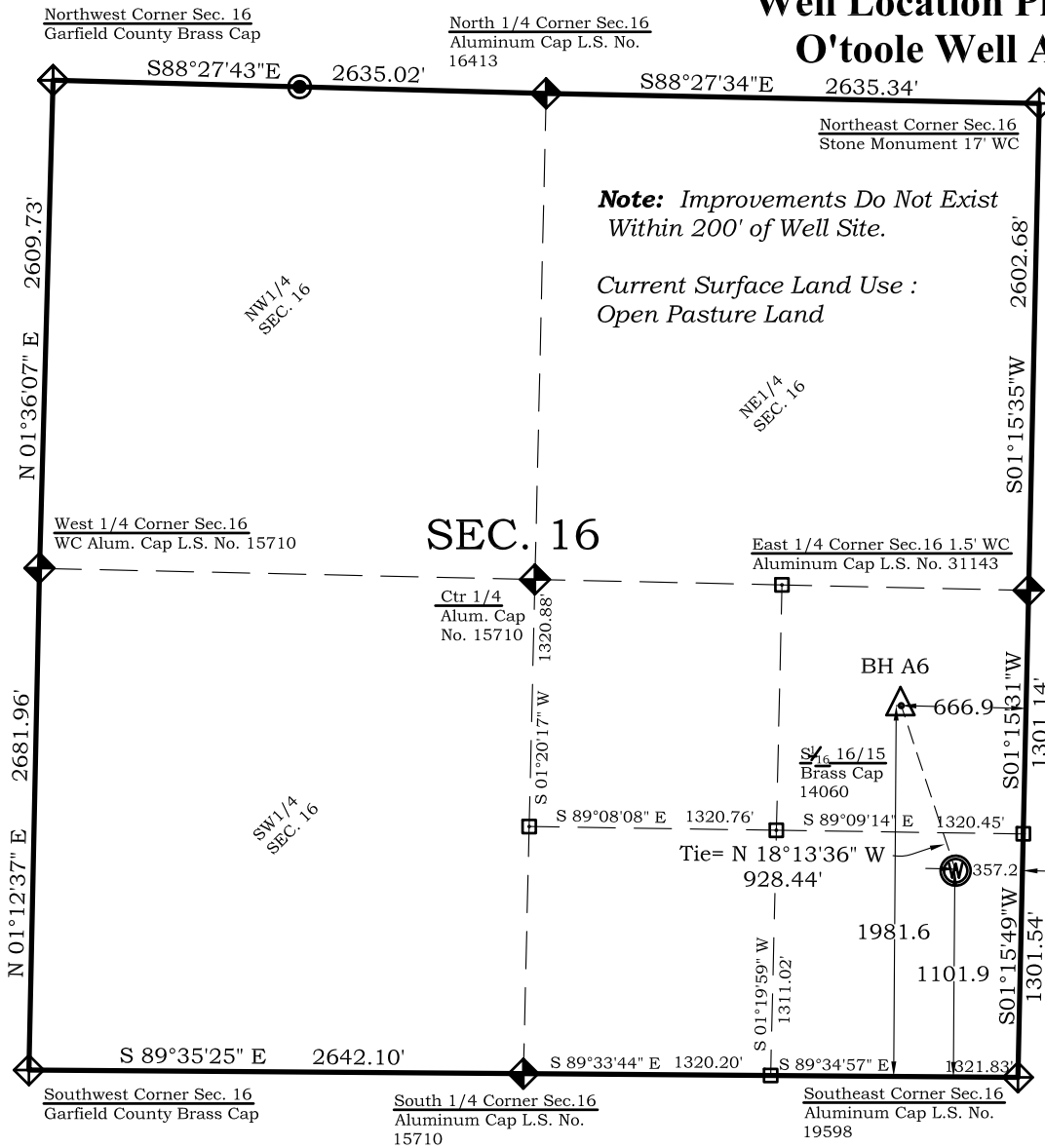


# Well Location Plat

## O'toole Well A6



### Legend

- ◆ - Field Surveyed Section Corner
- ◆ - Field Surveyed Quarter Corner
- ⊙ - Calculated Section Corner Location
- - Field Surveyed 1/6 Corner

### Bottom Hole: O'Toole A6

1982' FSL  
667' FEL  
**NAD83**  
Lat: 39.525162952°N  
Long: 107.664839133°W  
**NAD27**  
Lat: 39.525182401°N  
Long: 107.664224000°W

### Surface: O'Toole A6

1102' FSL  
357' FEL  
Gnd El= 5652.1  
Pad El= 5652.0  
**NAD83**  
Lat: 39.522767209°N  
Long: 107.663717917°W  
**NAD27**  
Lat: 39.522786656°N  
Long: 107.663102858°W  
UTM 13 NORTH  
**NAD 1983**  
NORTHING  
14364077.737  
EASTING  
889220.829

### Prepared For Antero Resources:

**Proposed O'toole A6 Well Situate in The SE 1/4 SE 1/4 Section 16, Township 6 South, Range 92 West of the 6 th. Principal Meridian, County of Garfield, State of Colorado**

### SURVEYOR'S CERTIFICATE

I, SCOTT E. AIBNER, A REGISTERED LAND SURVEYOR, LICENSED UNDER THE LAWS OF THE STATE OF COLORADO DO HEREBY CERTIFY THAT THE SURVEY SHOWN HEREON WAS PREPARED BY RIVER VALLEY SURVEY, INC., FOR ANTERO RESOURCES, BY ME OR UNDER MY DIRECT SUPERVISION AND THAT THIS PLAT IS A TRUE REPRESENTATION THEREOF.

BY:

SCOTT E. AIBNER, COLORADO REG. NO. 31143



### Notes:

- 1.) LATITUDE AND LONGITUDE COORDINATES ARE DIFFERENTIALLY CORRECTED AND BASED ON PUBLISHED NGS CONTROL STATION "WDP-5".
- SYSTEM: UTM ZONE: 13 NORTH DATUM: NAD 1983 (CONUS)
- 2.) ELEVATIONS ARE BASED ON NAVD OF 1929.
- 3.) ALL BOTTOM AND TOP HOLE LOCATIONS ARE MEASURED 90 DEGREES FROM SECTION LINE.
- 4.) USGS QUADRANGLE MAP "SILT CO".
- 5.) CURRENT SURFACE LAND USE: OPEN RANGELAND
- 6.) PDOP AT THE TIME OF LOCATION OF SURFACE WELL = 1.4



**River Valley Survey, Inc.**  
110 East 3rd. Street, Suite 207  
Rifle, Colorado 81650  
Ph: 970-379-7846

**Project:** O'toole A Pad

**Proj. No.** 06001-08

**Field Date:** 11-15-06

**Scale:** 1" = 1000'

**Date:** 12-28-10

**Sheet:** 1 of 7

**Well Location Plat**  
**Prepared For Antero Resources**

**Situate In:**  
SE 1/4 SE 1/4 Section 16, T6S., R. 92 W.  
of the 6th P.M., Garfield County,  
Colorado

