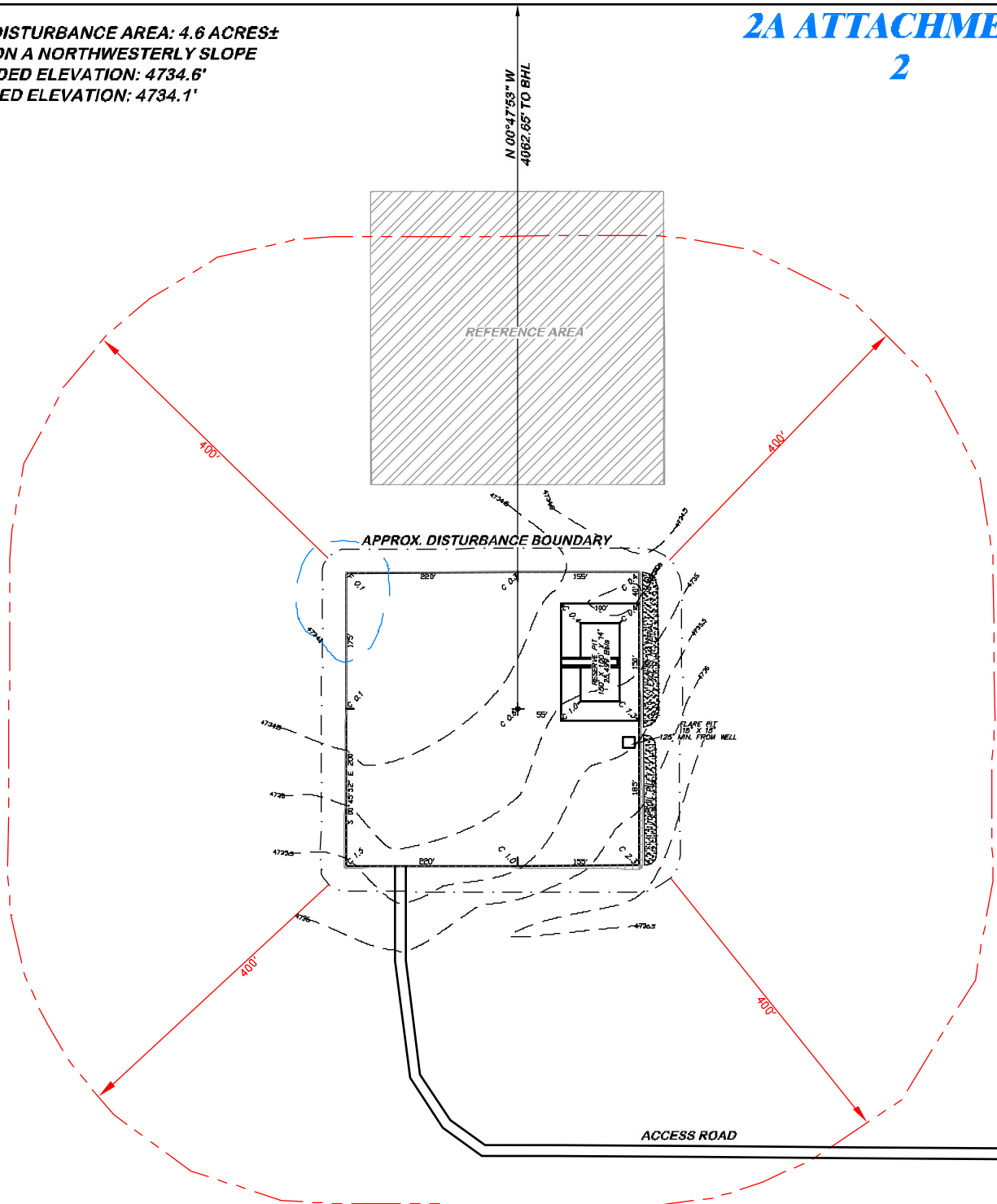


APPROXIMATE DISTURBANCE AREA: 4.6 ACRES±
 0.5% GRADE ON A NORTHWESTERLY SLOPE
 UNGRADED ELEVATION: 4734.6'
 FINISHED ELEVATION: 4734.1'

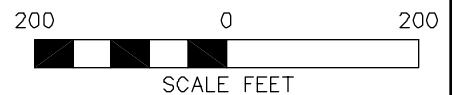
2A ATTACHMENT


2



**BEFORE DIGGING
 CALL FOR
 UTILITY LINE LOCATION**

NOTE: THE EARTH QUANTITIES ON
 THIS DRAWING ARE ESTIMATED
 AND THE USE OF IS AT THE
 RESPONSIBILITY OF THE USER.



 DRG RIFFIN & ASSOCIATES, INC. (307) 362-5028 1414 ELK ST., ROCK SPRINGS, WY 82901		LOCATION DRAWING	
		CHESAPEAKE ENERGY, LLC. GIRARD 2-63 11 1H SECTION 11, T2N, R63W	
DRAWN: 12/17/10 - MMM	SCALE: 1" = 200'	UNGRADED ELEVATION: 4734.6' FINISHED ELEVATION: 4734.1'	
REVISED: NA	DRG JOB No. 18202		
	EXHIBIT 2C		