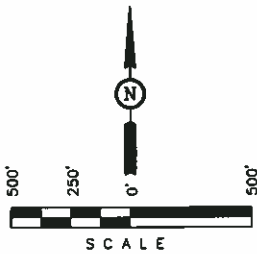


OXY USA WTP LP
BOTTOM HOLE DRAWING FOR
#609-33 PAD
SECTION 9, T6S, R97W, 6th P.M.
NW 1/4 SE 1/4



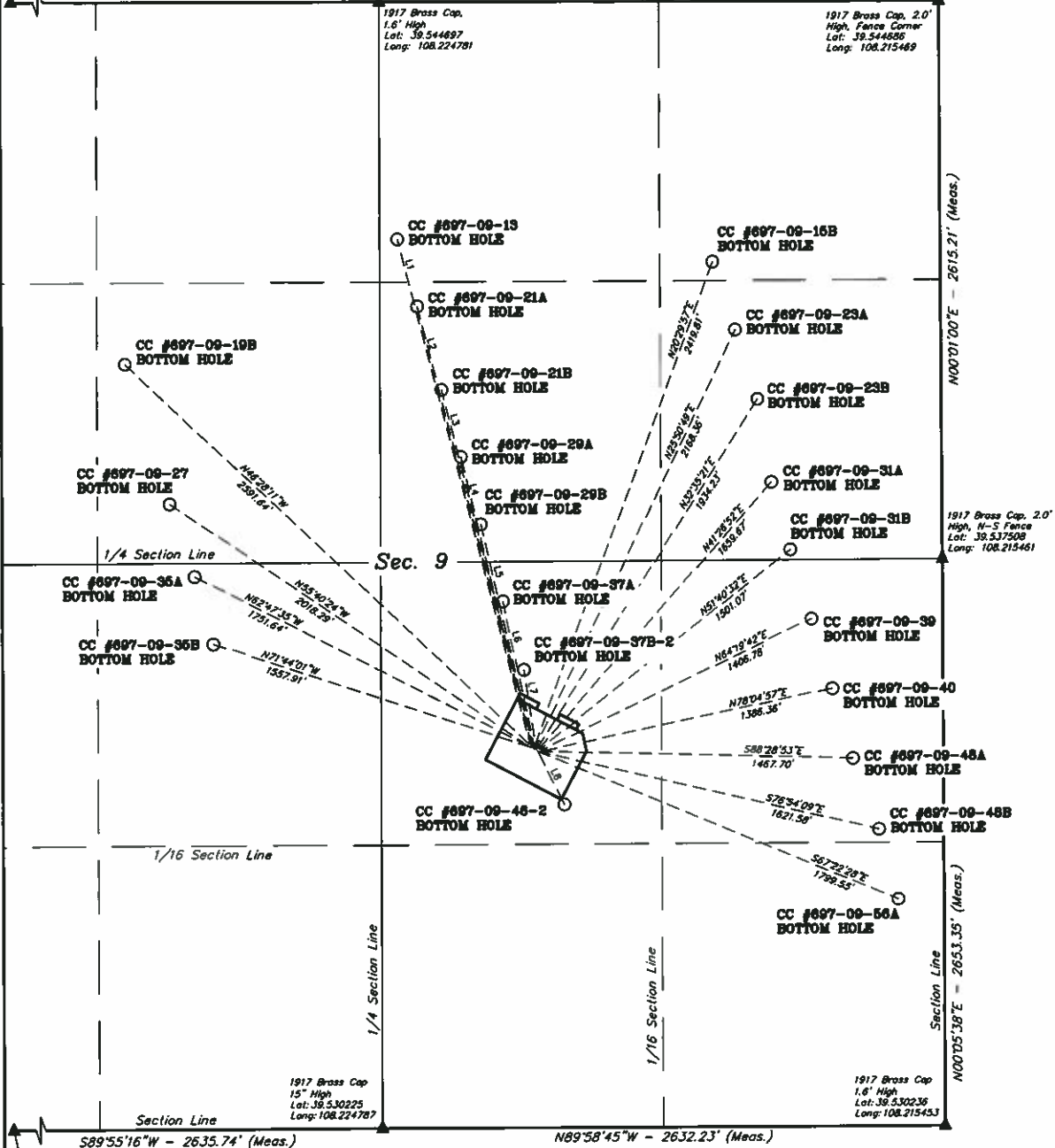
DATE: 10-19-10
DRAWN BY: K.G.
Revised: 11-05-10
Revised: 12-28-10 C.H.

LINE TABLE			
LINE	DIRECTION	LENGTH	WELL NAME
L1	N14°28'23"W	2446.73'	CC #697-09-13
L2	N14°21'15"W	2123.79'	CC #697-09-21A
L3	N14°08'07"W	1721.77'	CC #697-09-21B
L4	N13°26'30"W	1402.79'	CC #697-09-29A
L5	N12°53'12"W	1078.08'	CC #697-09-29B
L6	N11°49'22"W	708.72'	CC #697-09-37A
L7	N08°23'52"W	380.44'	CC #697-09-37B-2
L8	S26°02'41"E	279.88'	CC #697-09-46-2

NW Cor. Sec. 9,
1917 Brass Cap,
2.0' High
Lat: 39.544700
Long: 108.234156

N89°54'15"W - 2644.92' (Meas.)

N89°49'47"W - 2626.56' (Meas.)



SW Cor. Sec. 9,
1917 Brass Cap,
18" High
Lat: 39.530200
Long: 108.234134

S89°55'16"W - 2635.74' (Meas.)

N89°58'45"W - 2632.23' (Meas.)