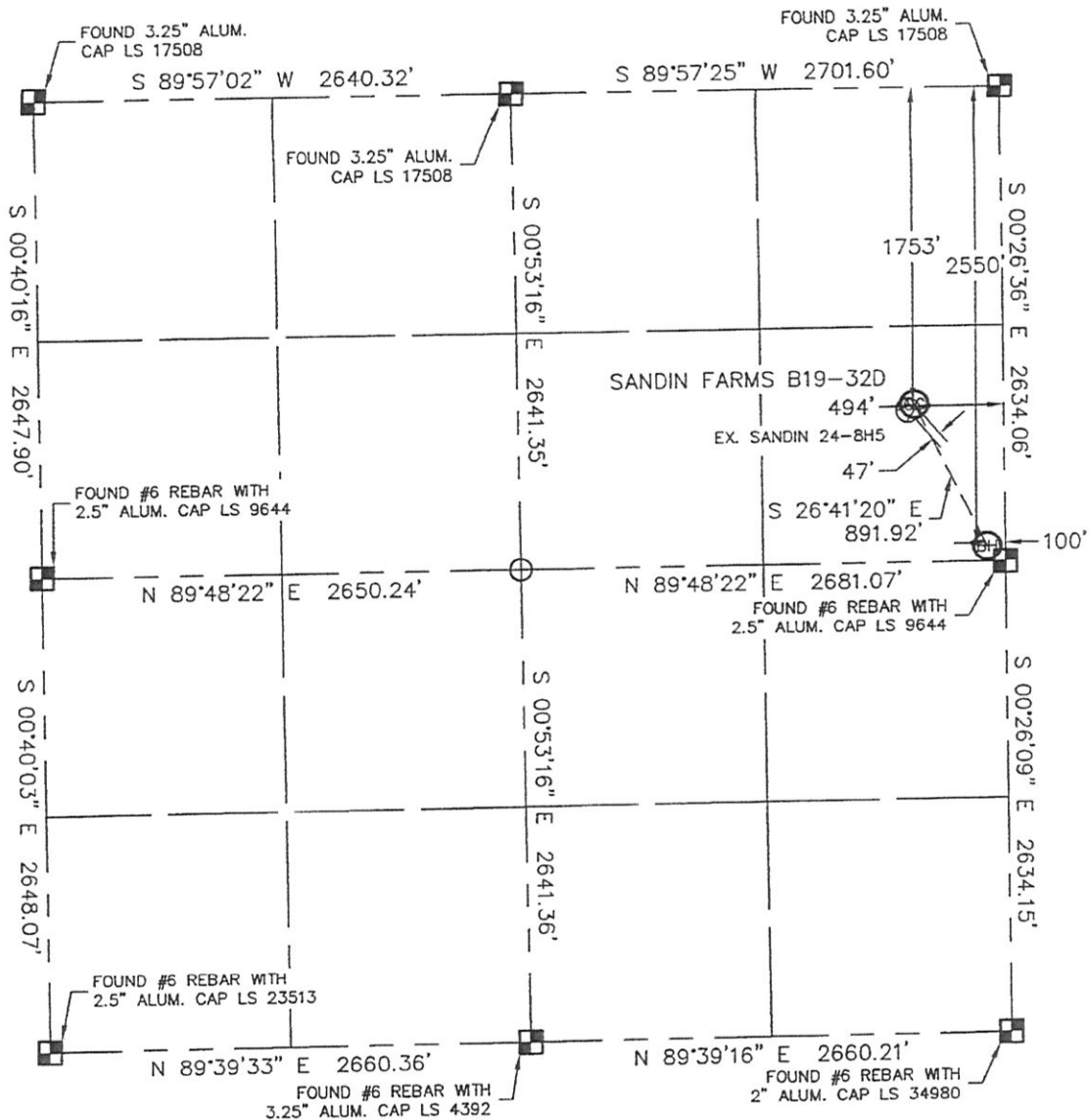


WELL LOCATION CERTIFICATE

SECTION: 24
TOWNSHIP: 5N
RANGE: 65W

THIS MAP DOES NOT REPRESENT A BOUNDARY SURVEY



In accordance with a request from Matt Campbell with Noble Energy Inc. Lat40°, LLC has determined the surface location of the SANDIN FARMS B19-32D to be 1753' from the NORTH line and 494' from the EAST line and the bottom hole to be 2550' from the NORTH line and 100' from the EAST line as measured at right angles from the section line of Section 24, Township 5 North, Range 65 West of the Sixth Principal Meridian, County of Weld, State of Colorado.

I hereby state that this Well Location Certificate was prepared by me, or under my direct supervision, that the fieldwork was completed on 6/1/10, for and on behalf of Noble Energy Inc. That this is not a Land Survey Plat or an Improvement Survey Plat, and that it is not to be relied upon for establishment of fence, building, or other future improvement lines.

NOTE:

- 1) Bearings shown are Grid Bearings of the Colorado State Plane Coordinate System, North Zone, North American Datum 1983/2007. The lineal dimensions as contained herein are based upon the "U.S. Survey Foot."
- 2) Ground elevations are based on an observed GPS elevation (NAVD 1988 DATUM).
- 3) NEAREST EXISTING WELL: SANDIN 24-BH5 47'
- 4) IMPROVEMENTS: See LOCATION DRAWING exhibit for all visible improvements within 400' of disturbed area.
- 5) SURFACE USE: IRRIGATED CROP, EX. WELL SITE
- 6) INSTRUMENT OPERATOR: BRIAN BRINKMAN

NOTE

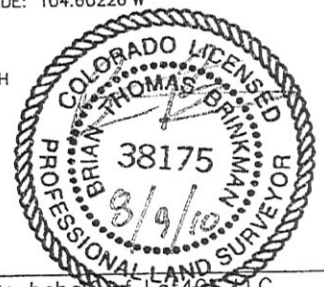
According to Colorado law, you must commence any legal action based upon any defect in this W.L.C. within three years after you discover such defect. In no event, may any action based upon any defect in this survey be commenced more than ten years after the date of the certificate shown hereon. (13-80-105 C.R.S.)

LEGEND

- = ALIQUOT MONUMENT AS DESCRIBED
- = CALCULATED POSITION

SURFACE LOCATION
LATITUDE: 40.38705°N
LONGITUDE: 104.60367°W
PDOP: 1.2
ELEV: 4632
1/4, 1/4: SE1/4NE1/4
NEAREST PROPERTY LINE: 435' NORTH

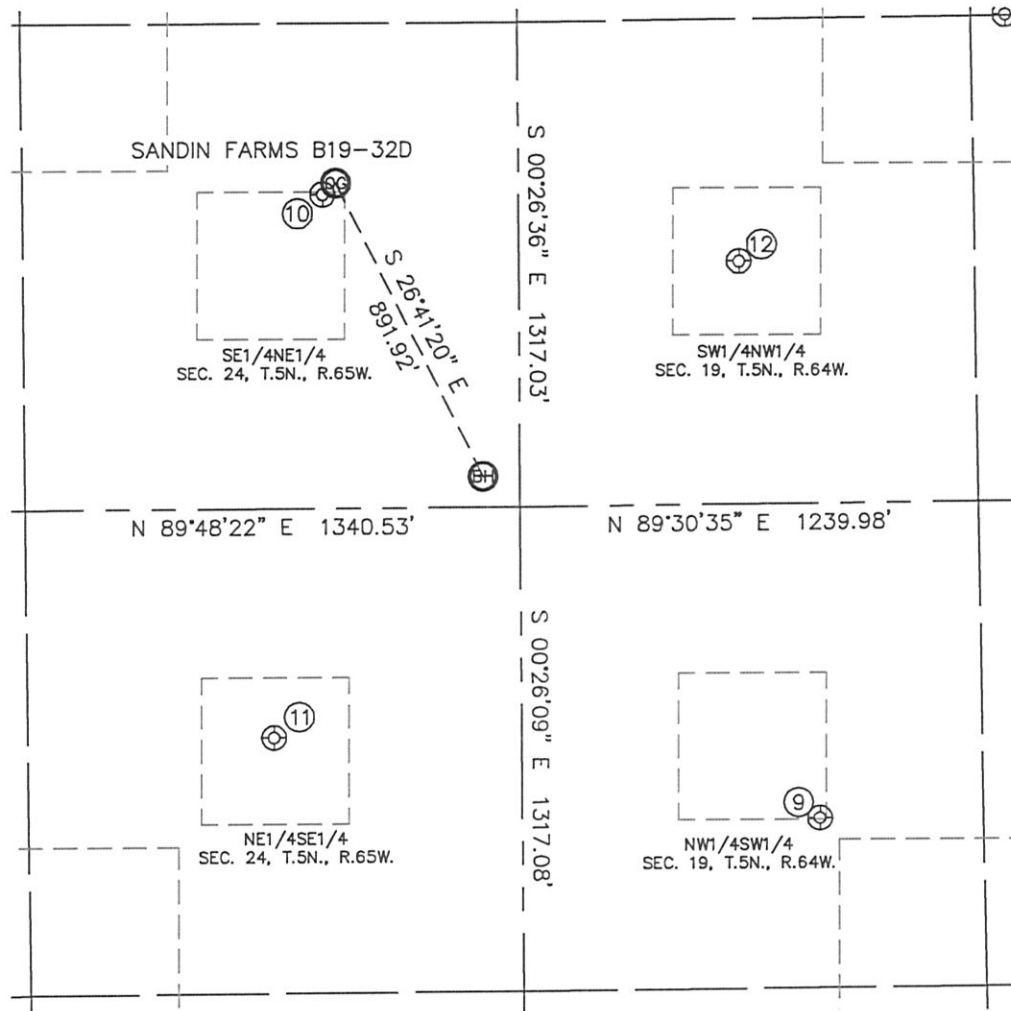
BOTTOM HOLE
LATITUDE: 40.38485°N
LONGITUDE: 104.60226°W



Brian T. Brinkman—On behalf of Lat40°, LLC
Colorado Licensed Professional
Land Surveyor No. 38175
PROJECT#: 2010026

SITE SKETCH

SECTION: 24
TOWNSHIP: 5N
RANGE: 65W



⑨

MAXEY HOFF #2
NW1/4SW1/4
1781' FSL
805' FWL
LAT-40.38226°N
LONG-104.59902°W
PDOP: 1.6
ELEV: 4631

⑩

SANDIN 24-8H5
SE1/4NE1/4
1783' FNL
530' FEL
LAT-40.38697°N
LONG-104.60380°W
PDOP: 5.2
ELEV: 4632

⑪

MAXEY 43-24
NE1/4SE1/4
2014' FSL
671' FEL
LAT-40.38292°N
LONG-104.60432°W
PDOP: 2.1
ELEV: 4634

⑫

KLEIN 1-19-5-64
SW1/4NW1/4
1977' FNL
596' FWL
LAT-40.3864°N
LONG-104.59976°W
PDOP: 2.9
ELEV: 4632

