

EXXONMOBIL CORPORATION
HOUSTON, Texas

NPU 196-19B1 Surface

H&P 215

Post Job Summary **Cement Multiple Stages**

Date Prepared: October 1, 2010
Version: 1

Service Supervisor: Ken Dearing
Submitted by: Simukayi Mutasa

HALLIBURTON

HALLIBURTON

Wellbore Geometry

Job Tubulars					MD		TVD		Excess	Shoe Joint Length
Type	Description	Size in	ID in	Wt lbm/ft	Top ft	Bottom ft	Top ft	Bottom ft	%	ft
Open Hole Section	Surface Open Hole		14.750		0.00	1,869.56	0.00	1,846.56	75.00	
Open Hole Section	Surface Open Hole		14.750		1,869.56	5,055.00	1,846.56	4,957.00	25.00	
Casing	Surface Casing	10.75	9.950	45.50	0.00	5,045.00	0.00	4,947.00		94.53
Cement Stage Tool	Multiple Stage Cementer		.000		1,869.56	1,869.56				0.00

Pumping Schedule

Stage #	Fluid #	Fluid Type	Fluid Name	Surface Density lbm/gal	Surface Volume
1	1	Spacer	FreshWater Ahead	8.33	50.0 bbl
1	2	Cement Slurry	First Stage Lead Cement	12.70	970.0 sacks
1	3	Cement Slurry	First Stage Tail Cement	15.80	355.0 sacks
1	4	Spacer	Drilling Fluid / Mud	8.90	466.0 bbl
2	1	Spacer	Freshwater Ahead	8.33	50.0 bbl
2	2	Cement Slurry	Second Stage Lead Cement	12.70	970.0 sacks
2	3	Spacer	Drilling Fluid / Mud	8.90	174.0 bbl

HALLIBURTON

Fluids Pumped

Stage/Plug # 1 **Fluid 1:** FreshWater Ahead
SPACER

Fluid Density: 8.33 lbm/gal
Fluid Volume: 50.00 bbl
Pump Rate: 6.00 bbl/min

Stage/Plug # 1 **Fluid 2:** First Stage Lead
Cement
ECONOCEM (TM) SYSTEM
0.6 % HR-7
0.25 lbm Poly-E-Flake

Fluid Weight: 12.70 lbm/gal
Slurry Yield: 1.87 ft³/sack
Total Mixing Fluid: 9.89 Gal
Surface Volume: 970.0 sacks
Sacks: 970.0 sacks
Calculated Fill: 2,608.82 ft
Calculated Top of Fluid: 1,903.00 ft
Pump Rate: 6.00 bbl/min

Stage/Plug # 1 **Fluid 3:** First Stage Tail Cement
HALCEM (TM) SYSTEM
0.25 % HR-800
0.25 lbm Poly-E-Flake

Fluid Weight: 15.80 lbm/gal
Slurry Yield: 1.15 ft³/sack
Total Mixing Fluid: 5.00 Gal
Surface Volume: 355.0 sacks
Sacks: 355.0 sacks
Calculated Fill: 516.18 ft
Calculated Top of Fluid: 4,511.82 ft
Pump Rate: 6.00 bbl/min

Stage/Plug # 1 **Fluid 4:** Drilling Fluid / Mud
DISPLACEMENT MUD

Fluid Density: 8.90 lbm/gal
Fluid Volume: 466.00 bbl
Pump Rate: 6.00 bbl/min

Stage/Plug # 2 **Fluid 1:** Freshwater Ahead
SPACER

Fluid Density: 8.33 lbm/gal
Fluid Volume: 50.00 bbl
Pump Rate: 6.00 bbl/min

Stage/Plug # 2 **Fluid 2:** Second Stage Lead
Cement
ECONOCEM (TM) SYSTEM
0.25 lbm Poly-E-Flake

Fluid Weight: 12.70 lbm/gal
Slurry Yield: 1.87 ft³/sack
Total Mixing Fluid: 9.92 Gal
Surface Volume: 970.0 sacks
Sacks: 970.0 sacks
Calculated Fill: 1,903.00 ft
Calculated Top of Fluid: 0.00 ft
Pump Rate: 6.00 bbl/min

HALLIBURTON

Stage/Plug # 2 **Fluid 3:** Drilling Fluid / Mud
DRILLING MUD

Fluid Density: 8.90 lbm/gal
Fluid Volume: 174.00 bbl
Pump Rate: 6.00 bbl/min

Stage/Plug # 2 **Fluid 4:** Top Out
Top Out
94 lbm Premium Cement
2 % Calcium Chloride

Fluid Weight: 15.80 lbm/gal
Slurry Yield: 1.16 ft³/sack
Total Mixing Fluid: 5.01 Gal
Pump Rate: 2.00 bbl/min

Job Summary

Job Information

Job Start Date	9/13/2010 9:00:00 AM
Job MD	5,055.0 ft
Job TVD	4,950.0 ft
Height of Plug Container/Swage Above Rig Floor	3.1 ft
Mud Type	Water Based Mud
Name of Mud Company	BAROID
Actual Mud Density	9.25 lbm/gal
Time Circulated before job	35.00 hour(s)
Rate at Which Well was Circulated	7.000 bbl/min
Pipe Movement During Hole Circulation	Reciprocated
Time From End Mud Circ. to Job Start	4.00 minute
Pipe Movement During Cementing	Reciprocated
Calculated Displacement	179.70 bbl
Job Displaced by (rig/halco)	Cement Unit HP Pumps
Annular flow Before Job? (Water/Gas)	No
Length of Rat Hole	10.00 ft

Cementing Equipment

Number of Centralizers Used	57
Pipe Centralization	Through Entire Cement Column
Brand of Float Equipment Used	Weatherford
Did Float Equipment Hold?	Yes
Plug set used?	Yes
Brand of Plug set used?	Weatherford
Calculated Pressure to Bump Plugs	360.0 psig
Brand of Stage Cementing Tools Used	Weatherford
Did Stage Cementing Tool Open Properly?	Yes

Service Supervisor Reports

Job Log

Date/Time	Chart #	Activity Code	Pump Rate	Cum Vol	Pressure (psig)	Comments
09/12/2010 17:00		Call Out				
09/12/2010 17:45		Pre-Convoy Safety Meeting				DISCUSS SAFETY AND HAZARDS OF TRAVEL.
09/12/2010 18:00		Other				LOAD EQUIPMENT FOR JOB.
09/12/2010 18:50		Depart Yard Safety Meeting				DISCUSS SAFETY AND HAZARDS OF TRAVEL.
09/12/2010 19:00		Crew Leave Yard				
09/12/2010 22:00		Other				ARRIVE AT W.R.Y., SAFETY HUDDLE, PICK UP BULK TRUCKS, LOAD CHEMICAL FOR JOB.
09/12/2010 22:55		Pre-Convoy Safety Meeting				DISCUSS SAFETY AND HAZARDS OF TRAVEL.
09/13/2010 00:00		Arrive At Loc				
09/13/2010 00:05		Assessment Of Location Safety Meeting				SIGN IN AT SAFETY SHACK, GET WORK PERMIT SIGNED, WALK LOCATION, DISCUSS SPOTING OF TRUCKS, DISCUSS SAFETY AND HAZARDS.
09/13/2010 00:15		Safety Meeting				MEET WITH CO.MAN, DISCUSS WELL CONDITIONS, GET WELL INFORMATION, DISCUSS PRESSURE TEST AND MAX PRESSURE, DISCUSS CONTINGENCIES, DISCUSS SAFETY AND HAZARDS, CASING @ 3300'.
09/13/2010 00:25		Safety Huddle				DISCUSS SAFETY AND HAZARDS.
09/13/2010 00:30		Other				SPOT EQUIPMENT.
09/13/2010 00:40		Safety Meeting - Pre Rig-Up				DISCUSS SAFETY AND HAZARDS.
09/13/2010 00:45		Rig-Up Equipment				RIG UP IRON AND SUCTION HOSE TO RED ZONE, TEST H2O.
09/13/2010 01:30		Prime Pumps				GET RCM AND BULK TRUCKS READY FOR JOB.
09/13/2010 02:00		Other				WAIT ON RIG AND CASERS TO FINISH RUNNING CASING, 4510'.
09/13/2010 04:00		Casing on Bottom				
09/13/2010 04:05		Circulate Well				RIG PUMPS TO CIRCULATE WELL.
09/13/2010 06:50		Safety Meeting - Pre Rig-Up				SAFETY MEETING WITH RIG CREW AND CO.MAN, DISCUSS SAFETY AND HAZARDS OR RIGGING UP ON RIG FLOOR.
09/13/2010 07:15		Rig-Up Equipment				RIG IRON TO RIG FLOOR AND RIG UP ON RIG FLOOR.
09/13/2010 07:35		Other				RIG SHUTS DOWN, RIG RIGS DOWN CASING TOOL.
09/13/2010 07:50		Safety Meeting - Pre Rig-Up				DISCUSS SAFETY AND HAZARDS.
09/13/2010 08:00		Rig-Up Equipment				RIG CEMENT HEAD TO CASING AND FINISH RIGGING UP IRON ON RIG FLOOR.
09/13/2010 08:20		Circulate Well				RIG PUMPSTHROUGH HES IRON TO CIRCULATE WELL.
09/13/2010 08:25		Safety Meeting - Pre Job				SAFETY MEETING WITH RIG CREW AND CO.MAN, DISCUSS JOB PROCEDURE, DISCUSS SAFETY AND HAZARDS OF JOB.
09/13/2010 09:01		Other				RIG SHUTS DOWN-SAFETY HUDDLE, SWAP TO HES LINES.
09/13/2010 09:05		Pump Water	4	5	120.0	PUMP 5bbl H2O TO FILL LINES.
09/13/2010 09:08		Pressure Test			400.0	LOW PRESSURE TEST.

HALLIBURTON

Date/Time	Chart #	Activity Code	Pump Rate	Cum Vol	Pressure (psig)	Comments
09/13/2010 09:11		Pressure Test			5200.0	HIGH PRESSURE TEST.
09/13/2010 09:17		Pump Spacer	5	45	120.0	START PUMPING H2O SPACER.
09/13/2010 09:28		Pump 1st Stage Lead Slurry	6	324.8	340.0	START 12.7# 1st STAGE LEAD CEMENT, 324.8bbls, 970sks, 1.88cf/ft, 9.98gal/sk.
09/13/2010 09:31		Other	7		420.0	INCREASE RATE AS PER CO.MAN.
09/13/2010 09:33		Other	8		460.0	INCREASE RATE AS PER CO.MAN.
09/13/2010 10:12		Pump 2nd Stage Lead Slurry	7	72.7	450.0	START 15.8# 1st STAGE TAIL CEMENT, 72.7bbls, 355sks, 1.15cf/ft, 4.95gal/sk.
09/13/2010 10:16		Slow Rate	6		460.0	SLOW RATE TO KEEP UP DENSITY.
09/13/2010 10:24		Shutdown				END CEMENT-SHUT DOWN.
09/13/2010 10:26		Other				SAFETY HUDDLE-OPEN CEMENT HEAD, WEATHERFORD TOOL HAND DPOPS PLUG.
09/13/2010 10:34		Pump Displacement	8		320.0	START H2O DISPLACEMENT, WASHING ON TOP OF PLUG AS PER CO.MAN.
09/13/2010 10:36		Pump Displacement	8		360.0	START MUD DISPLACEMENT.
09/13/2010 10:55		Slow Rate	3		120.0	SLOW RATE TO LE PLUG PASS THROUGH TOOL AS PER TOOL HAND.
09/13/2010 11:01		Other	6		300.0	INCREASE RATE AS PER TOOL HAND.
09/13/2010 11:04		Other	8		435.0	INCREASE RATE AS PER CO.MAN.
09/13/2010 11:15		Pump Displacement	8		450.0	PUMP H2O SPACER TO LEAVE H2O ON TOOL, AS PER CO.MAN.
09/13/2010 11:17		Pump Displacement	8		355.0	RESUME MUD DISPLACEMENT.
09/13/2010 11:35		Pump Displacement	8		1130.0	START PUMPING H2O TO FINISH DISPLACEMENT AS PER CO.MAN.
09/13/2010 11:36		Slow Rate	3		755.0	SLOW RATE AS PER CO.MAN.
09/13/2010 11:37		Other	3		760.0	LOST RETURNS.
09/13/2010 11:40		Bump Plug	3		915.0	BUMP PLUG AT 915psi.
09/13/2010 11:40		Shutdown			1800.0	PRESSURE 885psi OVER TO 1800psi-SHUT DOWN.
09/13/2010 11:45		Check Floats				CHECK FLOATS-FLOATS HOLD, 3bbls BACK.
09/13/2010 11:47		Other				SAFETY HUDDLE, OPEN CEMENT HEAD, TOOL HAND DROPS OPENING TOOL.
09/13/2010 12:04		Pump Well Fluid	1.5		80.0	PUMP MUD TO PRESSURE UP ON TOOL TO OPEN TOOL.
09/13/2010 12:04		Other	1.5		615.0	TOOL OPENS AT 615psi.
09/13/2010 12:07		Pump Well Fluid	8		330.0	INCREASE RATE AS PER CO.MAN, PUMP MUD TO ESTABLISH CIRCULATION.
09/13/2010 12:09		Shutdown				
09/13/2010 12:12		Other				SAFETY HUDDLE, SWAP LINES TO RIG-RIG STARTS PUMPING TO CIRCULATE WELL.
09/13/2010 12:15		Safety Huddle				DISCUSS SAFETY AND HAZARDS.
09/13/2010 12:20		Other				WASH UP RCM TO PIT.
09/13/2010 12:50		Other				WAIT ON CEMENT.
09/13/2010 15:00		Safety Meeting - Pre Job				SAFETY MEETING WITH RIG CREW AND CO.MAN, DISCUSS JOB PROCEDURE, DISCUSS SAFETY AND HAZARDS OF JOB.
09/13/2010 15:25		Prime Pumps				GET RCM AND BULK TRUCKS READY FOR JOB.
09/13/2010 15:45		Other				RIG SHUTS DOWN-SAFETY HUDDLE, SWAP TO HES LINES.

HALLIBURTON

Date/Time	Chart #	Activity Code	Pump Rate	Cum Vol	Pressure (psig)	Comments
09/13/2010 15:48		Pump Spacer	5	50	145.0	START 50bbl H2O SPACER AHEAD.
09/13/2010 15:52		Other	8		285.0	INCREASE RATE AS PER CO.MAN.
09/13/2010 15:56		Pump 2nd Stage Lead Slurry	8	323.1	350.0	START 12.7# 2nd STAGE LEAD CEMENT, 323.1bbls, 970sk, 1.87cf/ft, 10.00gal/sk.
09/13/2010 16:36		Shutdown				END CEMENT-SHUT DOWN.
09/13/2010 16:39		Other				SAFETY HUDDLE, OPEN CEMENT HEAD, TOOL HAND DROPS CLOSING TOOL.
09/13/2010 16:43		Pump Displacement	8		280.0	START H2O DISPLACEMENT, WASHING ON TOP OF PLUG AS PER CO.MAN.
09/13/2010 16:46		Pump Displacement	8		170.0	START MUD DISPLACEMENT.
09/13/2010 16:52		Cement Returns to Surface	8		640.0	SEE CEMENT RETURNS TO PIT.
09/13/2010 17:04		Slow Rate	3		420.0	SLOW RATE AS PER CO.MAN.
09/13/2010 17:09		Bump Plug	3		600.0	BUMP PLUG AT 600psi.
09/13/2010 17:09		Shutdown			1800.0	PRESSURE 1200psi OVER TO 1800psi-SHUT DOWN.
09/13/2010 17:16		Other				CHECK TOOL-TOOL CLOSED, 2bbls BACK, GOOD CIRCULATION THROUGH OUT 2nd STAGE.
09/13/2010 17:20		Post-Job Safety Meeting (Pre Rig-Down)				DIDCUSS JOB, DISCUSS BBP AND HOC OBSERVATIONS, DISCUSS SAFETY AND HAZARDS.
09/13/2010 17:50		Other				CEMENT GOOD TO SERFACE AS PER CO.MAN.
09/13/2010 17:55		Safety Meeting - Pre Rig-Down				SAFETY MEETING WITH RIG CREW, DISCUSS SAFETY AND HAZARDS OF RIGGING DOWN RIG FLOOR.
09/13/2010 18:05		Rig-Down Equipment				RIG IRON OFF OF RIG FLOOR.
09/13/2010 18:15		Safety Huddle				DISCUSS SAFETY AND HAZARDS.
09/13/2010 18:20		Other				WASH UP RCM TO PIT.
09/13/2010 19:25		Safety Meeting - Pre Rig-Down				DISCUSS SAFETY AND HAZARDS.
09/13/2010 19:30		Rig-Down Equipment				RIG DOWN AND RACK UP IRON AND SUCTION HOSE.
09/13/2010 21:15		Pre-Convoy Safety Meeting				DISCUSS SAFETY AND HAZARDS OF TRAVEL.
09/13/2010 21:30		Crew Leave Location				
09/13/2010 21:30		Other				THANK YOU-KEN AND CREW.

The Road to Excellence Starts with Safety

Sold To #: 331699	Ship To #: 2803950	Quote #:	Sales Order #: 7619495
Customer: EXXONMOBIL CORPORATION	Customer Rep: ARENBURG, SCOTT		
Well Name: NPU	Well #: 196-19B1	API/UWI #: 05-103-11081-00	
Field:	City (SAP): MEEKER	County/Parish: Rio Blanco	State: Colorado
Legal Description: Section 36 Township 1S Range 97W			
Job Purpose: Cement Multiple Stages			
Well Type: Development Well		Job Type: Cement Multiple Stages	
Sales Person: TURNER, JAMIE	Srvc Supervisor: DEARING, KEN	MBU ID Emp #: 239372	

Job Personnel

HES Emp Name	Exp Hrs	Emp #	HES Emp Name	Exp Hrs	Emp #	HES Emp Name	Exp Hrs	Emp #
DEAN, MARK Christophe		454214	DEARING, KEN A		239372	FUCHS, ALEXANDER Arndt		479705
JOHNSON, KURT D		470766	SHIFLETT, JESSE Amos		469551			

Equipment

HES Unit #	Distance-1 way	HES Unit #	Distance-1 way	HES Unit #	Distance-1 way	HES Unit #	Distance-1 way
10572545	45 mile	10741129	45 mile	10784082	45 mile	10867527	45 mile
10872435	45 mile	10897817	45 mile	11019277	45 mile	11139326	45 mile
11263211	45 mile	11410662	45 mile				

Job Hours

Date	On Location Hours	Operating Hours	Date	On Location Hours	Operating Hours	Date	On Location Hours	Operating Hours
TOTAL			Total is the sum of each column separately					

Job

Job Times

Formation Name					Date	Time	Time Zone
Formation Depth (MD)	Top		Bottom		Called Out	12 - Sep - 2010	17:00 MST
Form Type		BHST	158 degF		On Location	13 - Sep - 2010	00:00 MST
Job depth MD	5055. ft	Job Depth TVD	4950. ft		Job Started	13 - Sep - 2010	09:00 MST
Water Depth		Wk Ht Above Floor	3.1 ft		Job Completed	13 - Sep - 2010	17:30 MST
Perforation Depth (MD)	From		To		Departed Loc	13 - Sep - 2010	21:30 MST

Well Data

Description	New / Used	Max pressure psig	Size in	ID in	Weight lbm/ft	Thread	Grade	Top MD ft	Bottom MD ft	Top TVD ft	Bottom TVD ft
Multiple Stage Cementer	Used			.				1869.6	1869.6		
Surface Open Hole				14.75				.	1869.6	.	1846.6
Surface Open Hole				14.75				1869.6	5055.	1846.6	4957.
Surface Casing	New		10.75	9.95	45.5	BTC	J-55	.	5045.	.	4947.

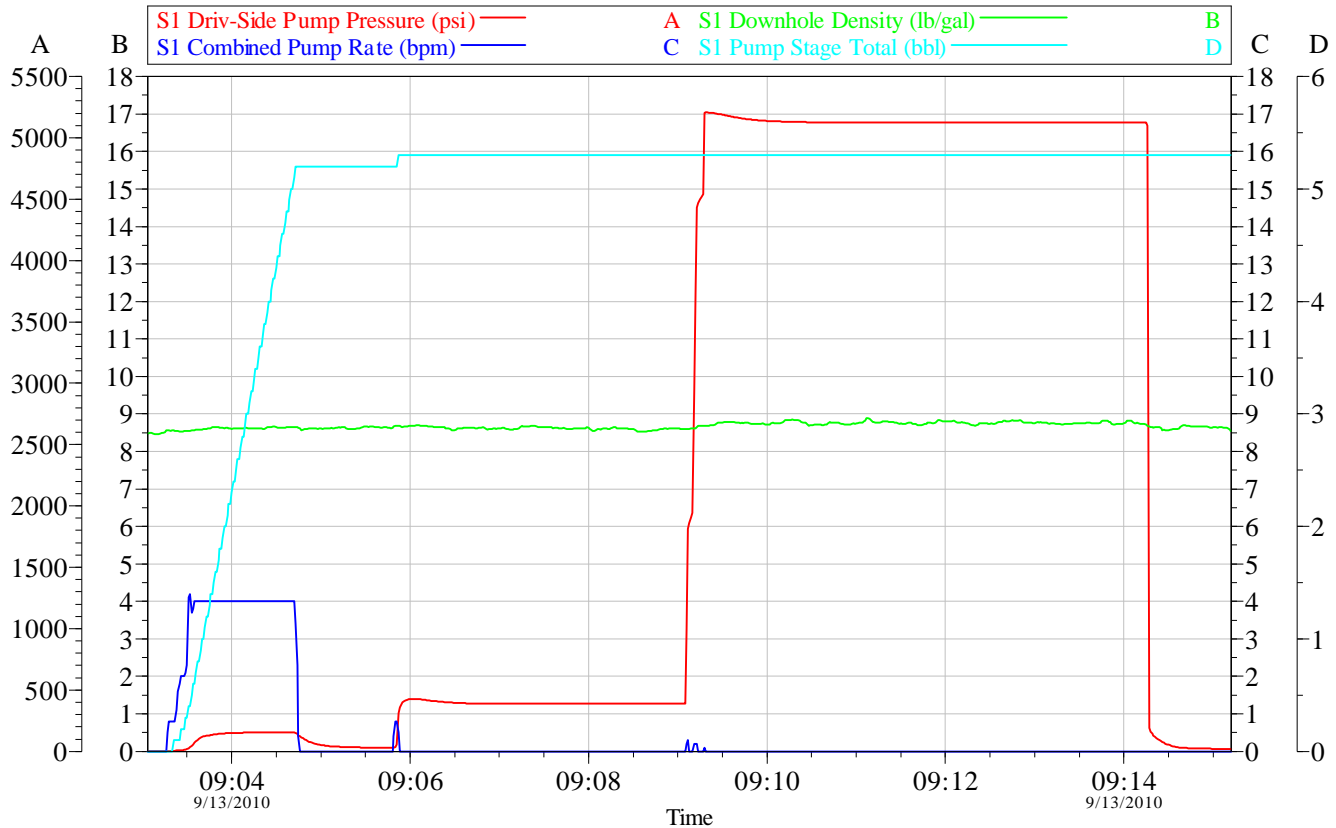
Tools and Accessories

Type	Size	Qty	Make	Depth	Type	Size	Qty	Make	Depth	Type	Size	Qty	Make
Guide Shoe					Packer					Top Plug			
Float Shoe					Bridge Plug					Bottom Plug			
Float Collar					Retainer					SSR plug set			
Insert Float										Plug Container			
Stage Tool										Centralizers			

Miscellaneous Materials												
Gelling Agt		Conc	Surfactant		Conc	Acid Type		Qty	Conc		%	
Treatment Fld		Conc	Inhibitor		Conc	Sand Type		Size	Qty			
Fluid Data												
Stage/Plug #: 1												
Fluid #	Stage Type	Fluid Name			Qty	Qty uom	Mixing Density lbm/gal	Yield ft3/sk	Mix Fluid Gal/sk	Rate bbl/min	Total Mix Fluid Gal/sk	
1	FreshWater Ahead				50.00	bbl	8.33	.0	.0	6.0		
2	First Stage Lead Cement	ECONOCEM (TM) SYSTEM (452992)			970.0	sacks	12.7	1.87	9.89	6.0	9.89	
0.6 %		HR-7 (100005055)										
0.25 lbm		POLY-E-FLAKE (101216940)										
9.889 Gal		FRESH WATER										
3	First Stage Tail Cement	HALCEM (TM) SYSTEM (452986)			355.0	sacks	15.8	1.15	5.0	6.0	5.0	
0.25 %		HR-800, 50 LB SACK (101619742)										
0.25 lbm		POLY-E-FLAKE (101216940)										
5 Gal		FRESH WATER										
4	Drilling Fluid / Mud				466.00	bbl	8.9	.0	.0	6.0		
Stage/Plug #: 2												
Fluid #	Stage Type	Fluid Name			Qty	Qty uom	Mixing Density uom	Yield uom	Mix Fluid uom	Rate uom	Total Mix Fluid uom	
1	Freshwater Ahead				50.00	bbl	8.33	.0	.0	6.0		
2	Second Stage Lead Cement	ECONOCEM (TM) SYSTEM (452992)			970.0	sacks	12.7	1.87	9.92	6.0	9.92	
0.25 lbm		POLY-E-FLAKE (101216940)										
9.915 Gal		FRESH WATER										
3	Drilling Fluid / Mud				174.00	bbl	8.9	.0	.0	6.0		
4	Top Out	CMT - PREMIUM - CLASS G, 94 LB SK (100003685)				sacks	15.8	1.16	5.01	2.0	5.01	
94 lbm		CMT - PREMIUM - CLASS G REG OR TYPE V, BULK (100003685)										
2 %		CALCIUM CHLORIDE - HI TEST PELLET (100005053)										
5.019 Gal		FRESH WATER										
Calculated Values			Pressures			Volumes						
Displacement		Shut In: Instant		Lost Returns		Cement Slurry		Pad				
Top Of Cement		5 Min		Cement Returns		Actual Displacement		Treatment				
Frac Gradient		15 Min		Spacers		Load and Breakdown		Total Job				
Rates												
Circulating		Mixing		Displacement		Avg. Job						
Cement Left In Pipe		Amount	94.53 ft	Reason	Shoe Joint							
Frac Ring # 1 @	ID	Frac ring # 2 @	ID	Frac Ring # 3 @	ID	Frac Ring # 4 @	ID					
The Information Stated Herein Is Correct					Customer Representative Signature							

Data Acquisition

EXXONMOBIL CORPORATION
10.75" CEMENT MULTIPLE STAGES
NPU #: 196-19B1
PRESSURE TEST



Customer: SCOTT ARENBURG
Well Description: NPU #: 196-19B1

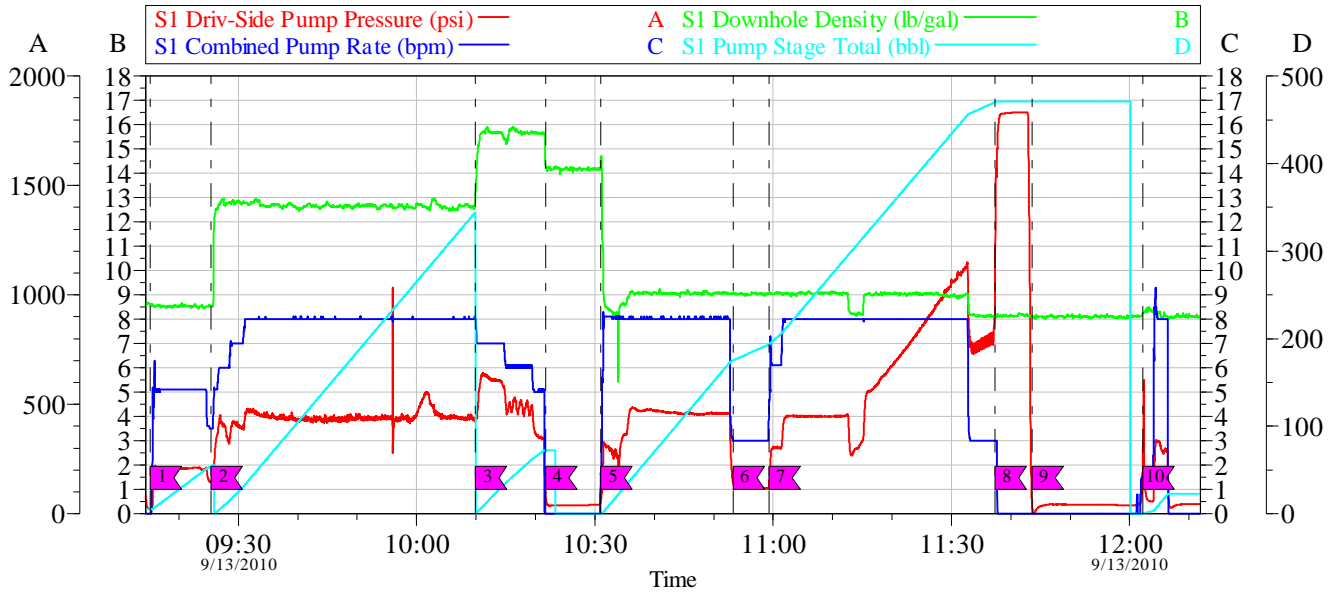
Job Date: 13-Sep-2010
UWI:

Sales Order #: 7619492
RIG #: H&P 215

OptiCem v6.3.4
13-Sep-10 12:27

HALLIBURTON

EXXONMOBIL CORPORATION
10.75" CEMENT MULTIPLE STAGES
NPU #: 196-19B1
1st STAGE



Intersection	SDPP	Intersection	SDPP
1 START H2O SPACER	09:15:09 21.49	2 START 12.7# LEAD CEMENT	09:25:23 145.2
3 START 15.8# TAIL CEMENT	10:09:52 423.0	4 SHUT DOWN-DROP PLUG	10:21:40 100.2
5 START DISPLACEMENT	10:31:01 61.54	6 SLOW RATE-PASS THROUGH TOOL	10:53:15 143.3
7 RESUME RATE-THROUGH TOOL	10:59:16 127.2	8 BUMP PLUG	11:37:18 911.0
9 CHECK FLOATS-HOLD-DROP OPEN TOOL	11:43:33 62.73	10 PUMP TO OPEN TOOL-TOOL OPENS	12:02:14 226.1

Customer: SCOTT ARENBURG
Well Description: NPU #: 196-19B1

Job Date: 13-Sep-2010
UWI:

Sales Order #: 7619492
RIG #: H&P 215

OptiCem v6.3.4
13-Sep-10 13:05

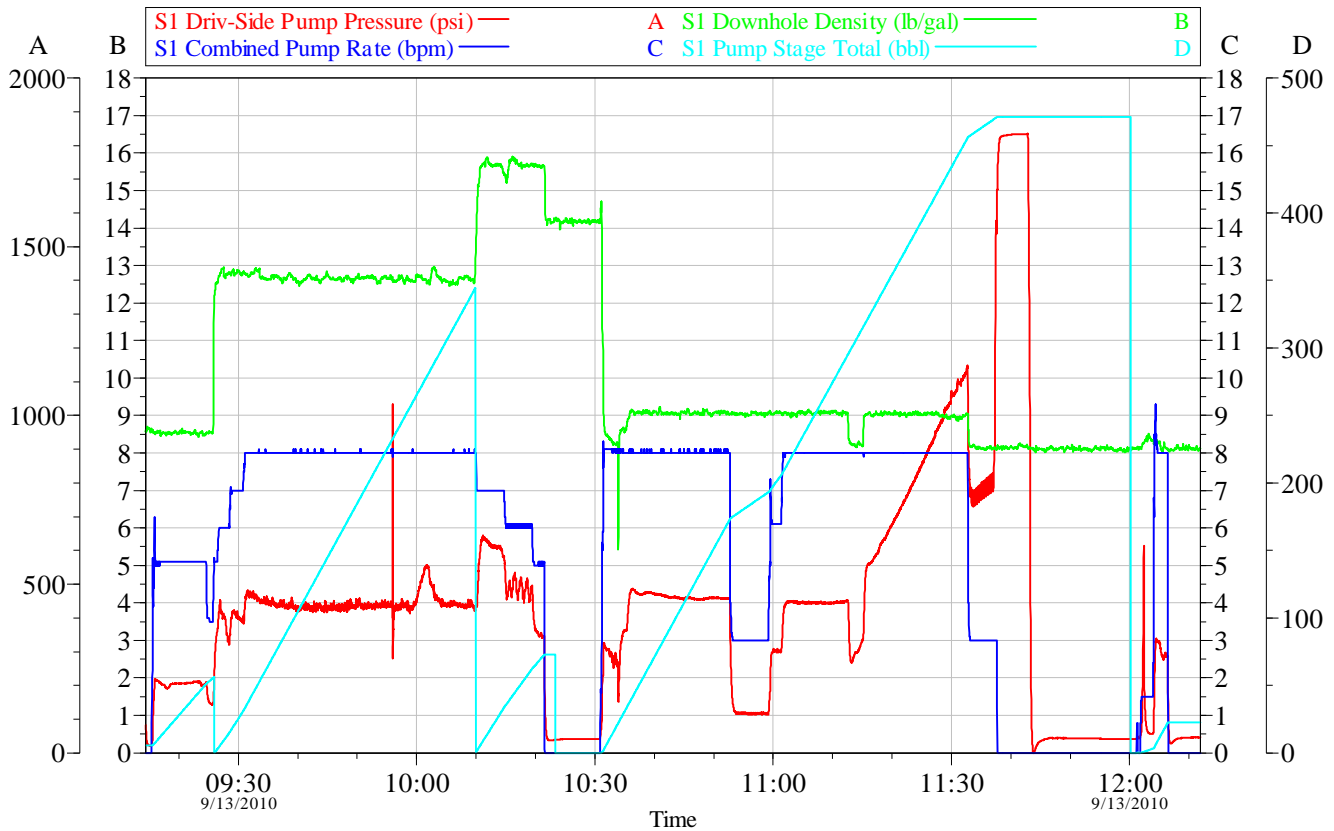
HALLIBURTON

EXXONMOBIL CORPORATION

10.75" CEMENT MULTIPLE STAGES

NPU #: 196-19B1

1st STAGE



Customer: SCOTT ARENBURG
Well Description: NPU #: 196-19B1

Job Date: 13-Sep-2010
UWI:

Sales Order #: 7619492
RIG #: H&P 215

OptiCem v6.3.4
13-Sep-10 13:17

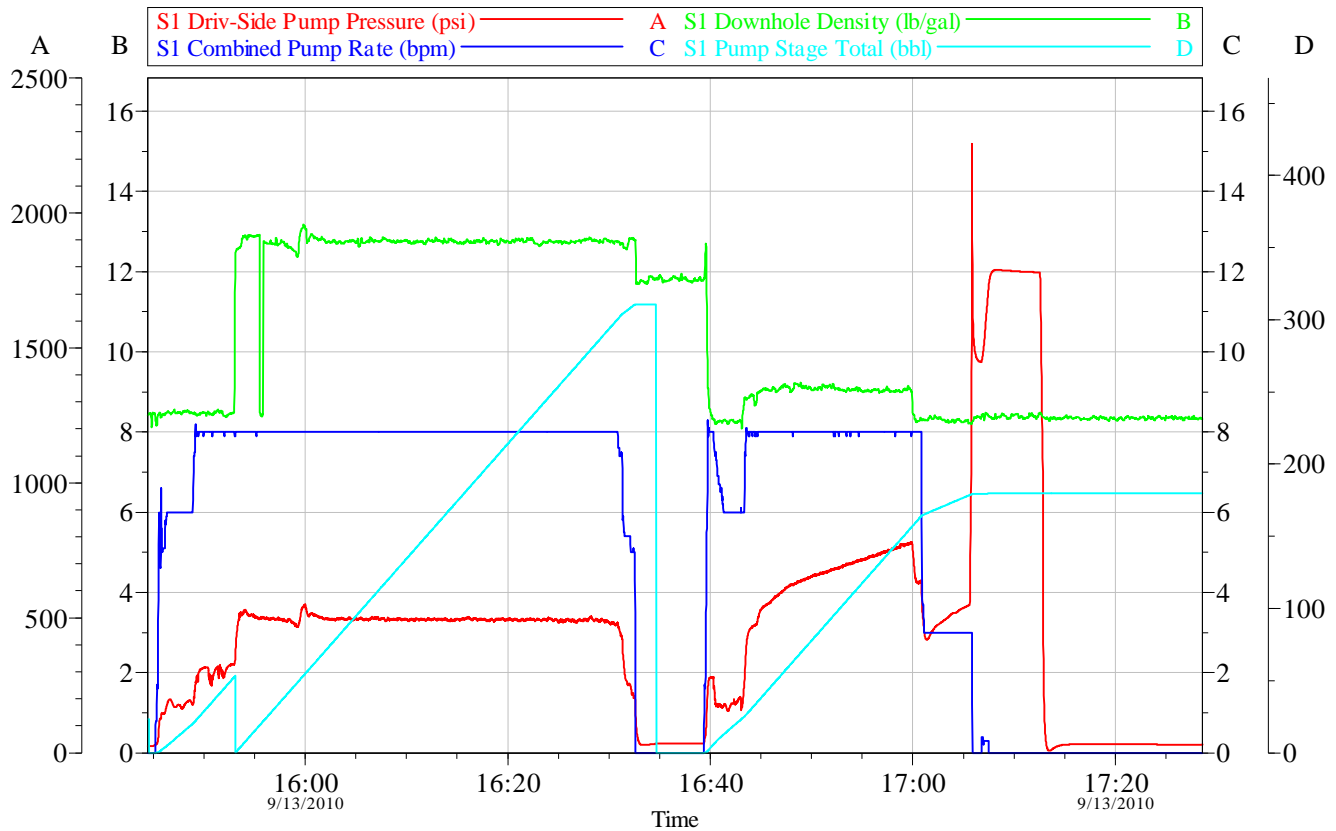
HALLIBURTON

EXXONMOBIL CORPORATION

10.75" CEMENT MULTIPLE STAGES

NPU #: 196-19B1

2nd STAGE



Customer: SCOTT ARENBURG
Well Description: NPU #: 196-19B1

Job Date: 13-Sep-2010
UWI:

Sales Order #: 7619492
RIG #: H&P 215

OptiCem v6.3.4
13-Sep-10 18:31

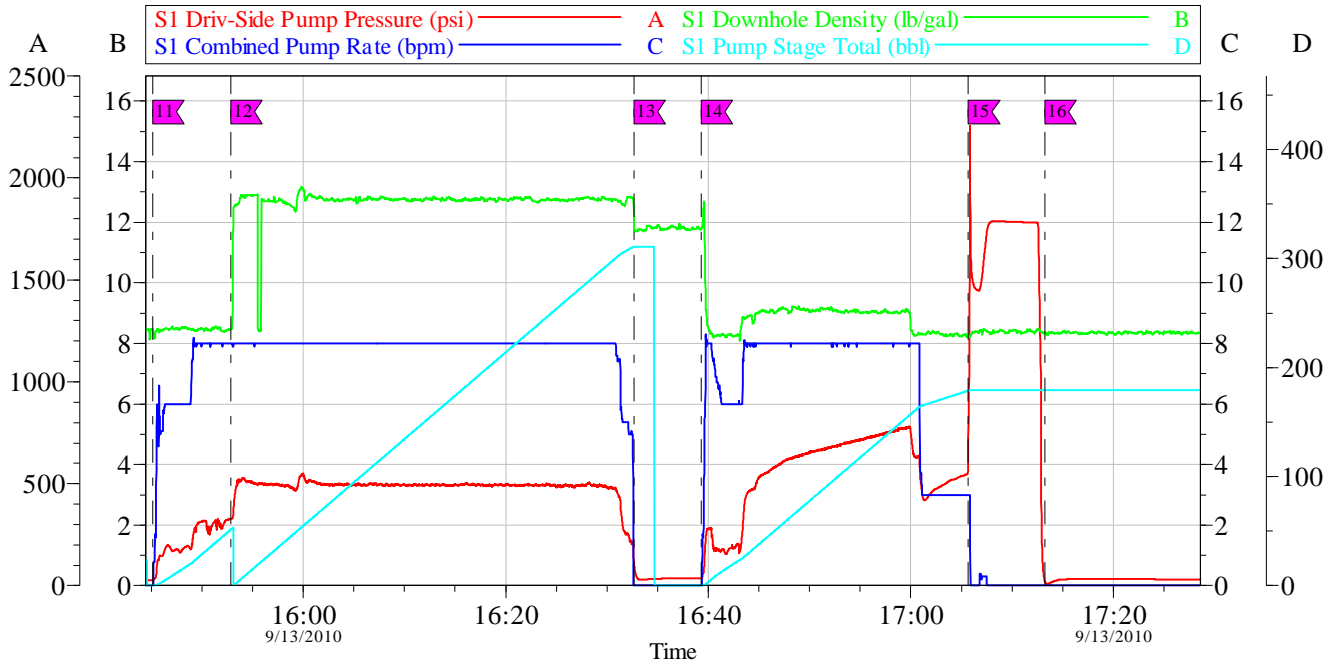
HALLIBURTON

EXXONMOBIL CORPORATION

10.75" CEMENT MULTIPLE STAGES

NPU #: 196-19B1

2nd STAGE



Intersection	SDPP	Intersection	SDPP
11 START H2O SPACER AHEAD	15:45:08 27.40	12 START 12.7# 2nd STAGE LEAD CEMENT	15:52:51 329.0
13 END CEMENT-SHUT DOWN	16:32:39 117.1	14 START DISPLACEMENT	16:39:19 36.00
15 BUMP CLOSING TOOL	17:05:40 653.1	16 CHECK TOOL- TOOL CLOSED	17:13:15 19.67

Customer: SCOTT ARENBURG
Well Description: NPU #: 196-19B1

Job Date: 13-Sep-2010
UWI:

Sales Order #: 7619492
RIG #: H&P 215

OptiCem v6.3.4
13-Sep-10 18:35