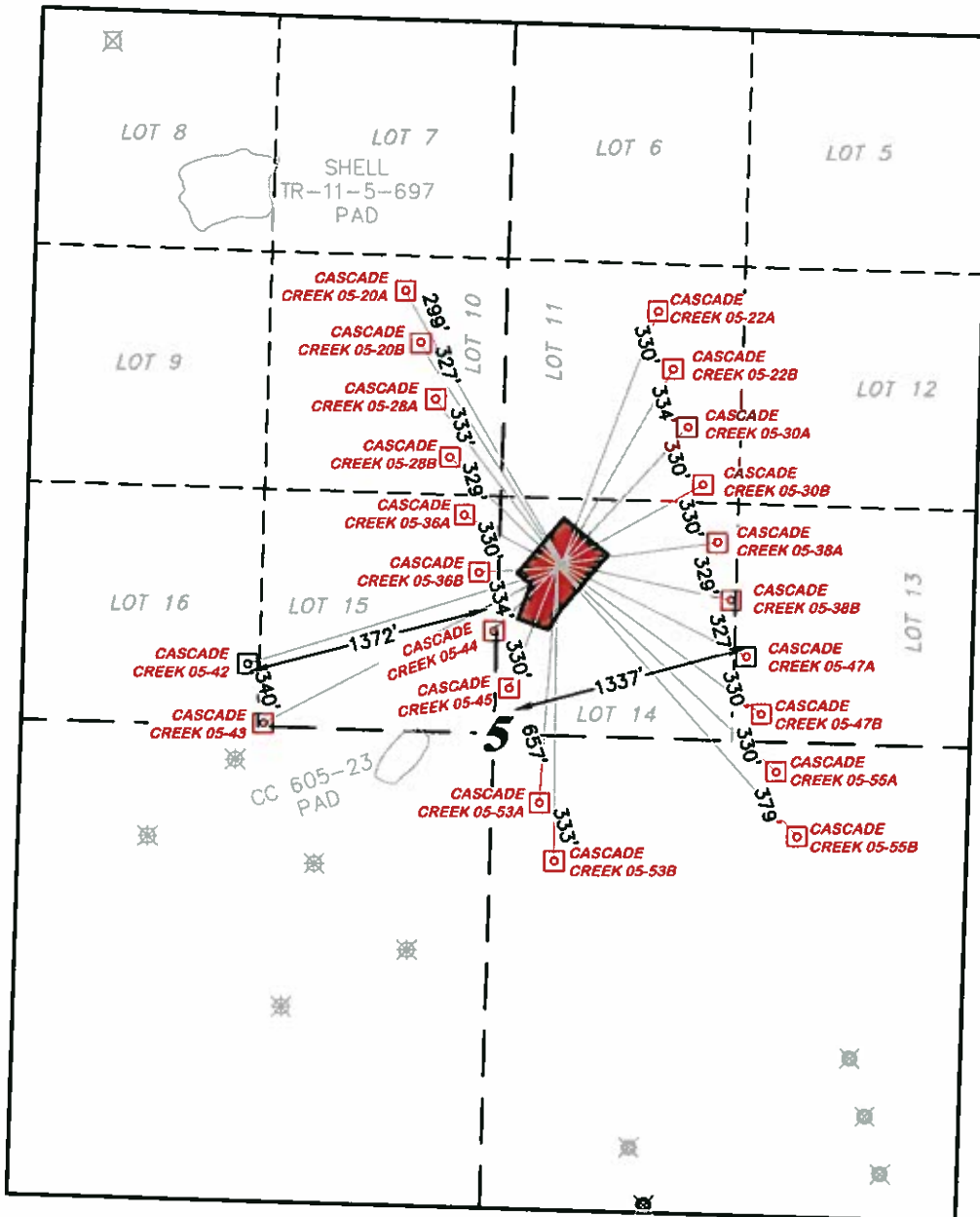


T6S

N



SCALE: 1" = 1000'



R 97 W

LEGEND:

- ☒ EXISTING BOTTOM HOLE LOCATION FOR SHELL TR-11-5-697 PAD
- ☒ EXISTING BOTTOM HOLE LOCATION FOR CC 697-05-23 PAD
- ☒ PROPOSED BOTTOM HOLE LOCATION FOR CC 697-08 PAD
- ☒ PROPOSED BOTTOM HOLE LOCATION FOR CC 608-43-31 PAD



CC 697-05C PAD



DRIFIN & ASSOCIATES, INC.
1414 ELK ST., ROCK SPRINGS, WY 82901

(307) 362-5028

MULTI-WELL PLAN

OXY USA WIP LP
CASCADE CREEK 697-05-20A, 20B, 22A, 22B, 28A, 28B, 30A, 30B, 36A, 36B, 38A, 38B, 42, 43, 44, 45, 47A, 47B, 53A, 53B, 55A, 55B, SECTION 5, T. 6 S., R. 97 W., 6th P.M., GARFIELD COUNTY, COLORADO
PAD LOCATION IN LOT 14, NE 1/4 OF SECTION 5, T. 6 S., R. 97 W., 6th P.M. GARFIELD COUNTY, COLORADO

DRAWN: 12/30/10 - DEH

SCALE: 1" = 1000'

REVISED: N/A

JOB No. 18285

EXHIBIT 7