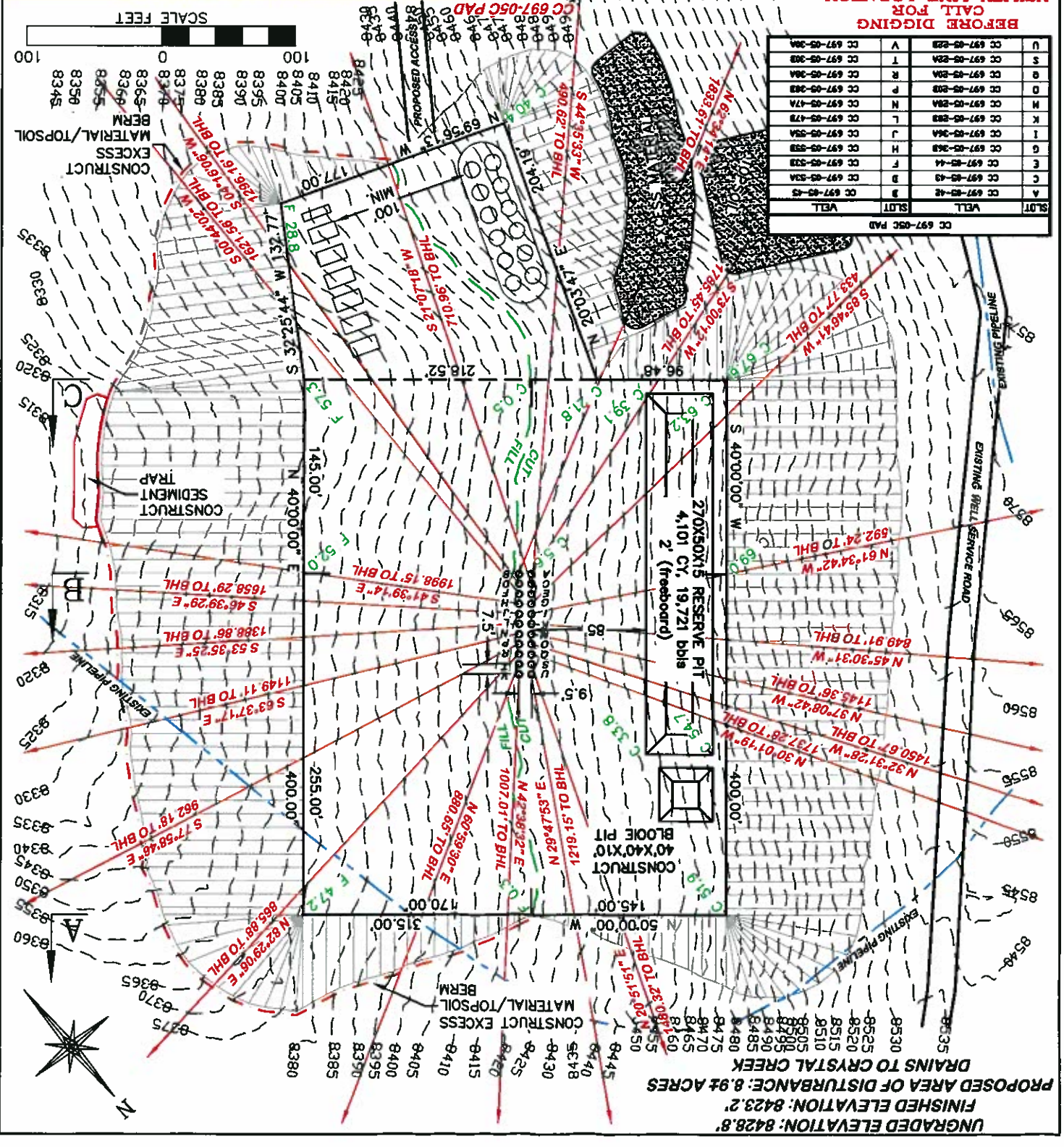


REVISED: N/A	EXHIBIT 2
DRAWN: 12/30/10 - DEH	TOTALS
SCALE: 1" = 100'	PIT
1414 ELK ST., ROCK SPRINGS, WY 82901	PAD
Riffin & Associates, Inc.	CUT
(307) 382-5028	FILL
	TOPSOIL
	EXCESS

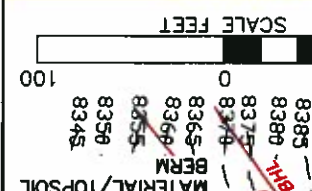
CONSTRUCTION LAYOUT DRAWING 1 OF 5
OXY USA WPT LP
CASCADE CREEK 697-05-20A, 20B, 22A, 22B, 28A, 28B, 30A, 30B, 36A, 36B, 38A, 38B, 42, 43, 44, 45, 47A, 47B, 53A, 53B, 55A, 55B, LOT 14, NE1/4, SECTION 5, T. 6 S., R. 97 W., 6th P.M., GARFIELD COUNTY, COLORADO
ESTIMATED EARTHWORK



SLLOT	VEILL	WELL
A	CC 697-05-48	B
B	CC 697-05-49	C
C	CC 697-05-50	D
D	CC 697-05-51	E
E	CC 697-05-52	F
F	CC 697-05-53	G
G	CC 697-05-54	H
H	CC 697-05-55	I
I	CC 697-05-56	J
J	CC 697-05-57	K
K	CC 697-05-58	L
L	CC 697-05-59	M
M	CC 697-05-60	N
N	CC 697-05-61	O
O	CC 697-05-62	P
P	CC 697-05-63	Q
Q	CC 697-05-64	R
R	CC 697-05-65	S
S	CC 697-05-66	T
T	CC 697-05-67	U
U	CC 697-05-68	V

BEFORE DIGGING
CALL FOR
UTILITY LINE LOCATION

NOTE: THE EARTH QUANTITIES ON THIS DRAWING ARE ESTIMATED AND THE RESPONSIBILITY OF THE USER.



CONSTRUCT EXCESS MATERIAL/TOPSOIL

CONSTRUCT SEDIMENT TRAP

CONSTRUCT BLOON PIT

CONSTRUCT RESERVE PIT

CONSTRUCT BERM

CONSTRUCT EXCESS MATERIAL/TOPSOIL





RIFFIN & ASSOCIATES, INC.
 1414 ELK ST., ROCK SPRINGS, WY 82901
 (307) 362-5028

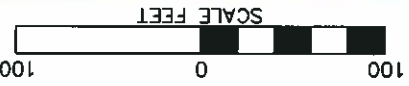
NOTE: THE EARTH QUANTITIES ON THIS DRAWING ARE ESTIMATED AND THE USE OF SAID QUANTITIES IS AT THE RESPONSIBILITY OF THE USER.

**BEFORE DIGGING
 CALL FOR
 UTILITY LINE LOCATION**

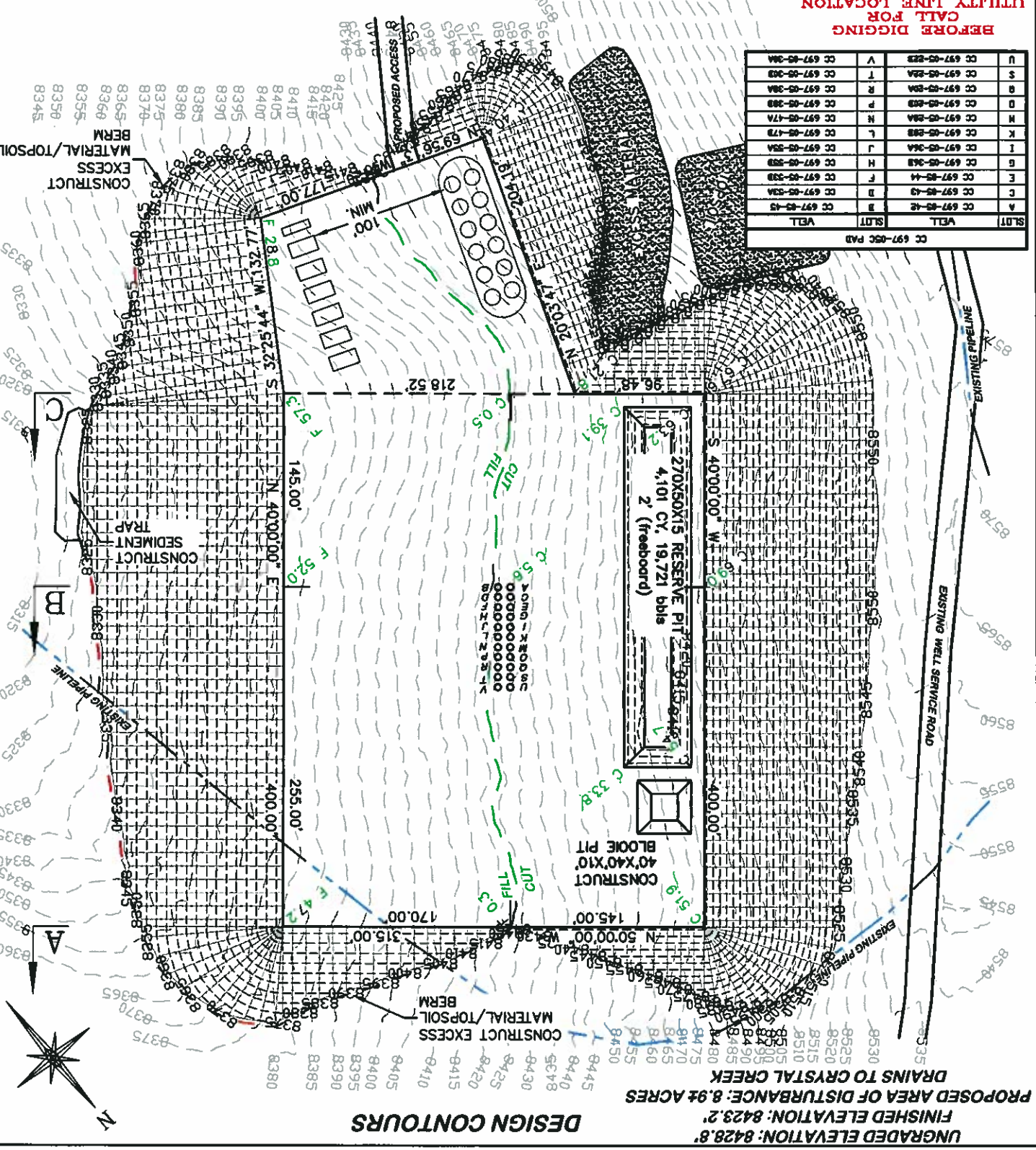
SL. NO.	WELL	DEPTH
A	CC 697-05-42	17.0
B	CC 697-05-43	17.0
C	CC 697-05-44	17.0
E	CC 697-05-39	17.0
G	CC 697-05-36A	17.0
H	CC 697-05-35B	17.0
I	CC 697-05-36A	17.0
K	CC 697-05-28B	17.0
L	CC 697-05-35A	17.0
M	CC 697-05-28A	17.0
N	CC 697-05-17A	17.0
O	CC 697-05-28B	17.0
P	CC 697-05-28B	17.0
R	CC 697-05-28A	17.0
S	CC 697-05-28A	17.0
T	CC 697-05-28B	17.0
V	CC 697-05-22B	17.0

CONSTRUCTION LAYOUT DRAWING 3 OF 5
DESIGN CONTOURS
 OXY USA WTP LP
 CASCADE CREEK 697-05-20A, 20B, 22A, 22B, 28A, 28B, 30A, 30B, 36A, 36B, 38A, 38B, 42, 43, 44, 45, 47A, 47B, 53A, 53B, 55A, 55B, LOT 14, NE1/4,
 SECTION 5, T. 6 S., R. 97 W., 6th P.M.,
 GARFIELD COUNTY, COLORADO

EXHIBIT 2B
 DRG JOB NO. 18285
 SCALE: 1" = 100'
 DRAWN: 12/30/10 - DEH
 REVISED: N/A



CC 697-05C PAD



DESIGN CONTOURS

UNGRADED ELEVATION: 8428.8'
 FINISHED ELEVATION: 8423.2'
 PROPOSED AREA OF DISTURBANCE: 8.94 ACRES
 DRAINS TO CRYSTAL CREEK

LOCATON DRAWING
OXY USA WTP LP
CASCADE CREEK 697-05-20A, 20B, 22A, 22B, 28A, 28B,
30A, 30B, 36A, 36B, 38A, 38B, 42, 43, 44, 45, 47A, 47B,
53A, 53B, 55A, 55B, LOT 14, NE1/4,
SECTION 5, T. 6 S., R. 97 W., 6th P.M.,
GARFIELD COUNTY, COLORADO

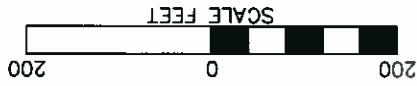
DRAWN: 12/30/10 - DEH
REVISD: N/A
DRG JOB NO. 18285
EXHIBIT 2D

1414 ELK ST., ROCK SPRINGS, WY 82901
SCALE: 1" = 200'

RIFFIN & ASSOCIATES, INC.
 (307) 362-5028

BEFORE DIGGING
CALL FOR
UTILITY LINE LOCATION

SLWT	WELL	SLWT	WELL
A	CC 697-05-42	B	CC 697-05-43
C	CC 697-05-43	D	CC 697-05-32A
E	CC 697-05-44	F	CC 697-05-33B
G	CC 697-05-34A	H	CC 697-05-34B
I	CC 697-05-35A	J	CC 697-05-35B
K	CC 697-05-36A	L	CC 697-05-37A
M	CC 697-05-38A	N	CC 697-05-37B
O	CC 697-05-39B	P	CC 697-05-38B
Q	CC 697-05-39A	R	CC 697-05-38A
S	CC 697-05-39A	T	CC 697-05-39B
U	CC 697-05-39B	V	CC 697-05-39A



CC 697-05C PAD

