
BILL BARRETT CORPORATION E-BILL

**GGU FEDERAL 31C-29-691
MAMM CREEK
Garfield County , Colorado**

Cement Surface Casing
02-Dec-2010

Post Job Report

The Road to Excellence Starts with Safety

Sold To #: 343492	Ship To #: 2822765	Quote #:	Sales Order #: 7811722
Customer: BILL BARRETT CORPORATION E-BILL	Customer Rep: South, Jody		
Well Name: GGU FEDERAL	Well #: 31C-29-691	API/UWI #: 05-045-19807	
Field: MAMM CREEK	City (SAP): SILT	County/Parish: Garfield	State: Colorado
Lat: N 39.503 deg. OR N 39 deg. 30 min. 10.235 secs.	Long: W 107.573 deg. OR W -108 deg. 25 min. 35.81 secs.		
Contractor: Pro Petro	Rig/Platform Name/Num: Pro Petro		
Job Purpose: Cement Surface Casing			
Well Type: Development Well	Job Type: Cement Surface Casing		
Sales Person: METLI, MARSHALL	Srvc Supervisor: KUKUS, CRAIG	MBU ID Emp #: 369124	

Job Personnel

HES Emp Name	Exp Hrs	Emp #	HES Emp Name	Exp Hrs	Emp #	HES Emp Name	Exp Hrs	Emp #
BLUST, CHARLES Thomas	5	386662	BORSZICH, STEPHEN A	5	412388	KUKUS, CRAIG A	5	369124
MAGERS, MICHAEL Gerard	5	339439						

Equipment

HES Unit #	Distance-1 way	HES Unit #	Distance-1 way	HES Unit #	Distance-1 way	HES Unit #	Distance-1 way
10744648C	120 mile	10783493	120 mile	10822007	120 mile	10829469	120 mile
10998508	120 mile						

Job Hours

Date	On Location Hours	Operating Hours	Date	On Location Hours	Operating Hours	Date	On Location Hours	Operating Hours
12/02/10	5	1						

TOTAL	Total is the sum of each column separately							
-------	--	--	--	--	--	--	--	--

Job

Formation Name	Top	Bottom	Called Out	Date	Time	Time Zone
Formation Depth (MD)			On Location	02 - Dec - 2010	05:00	MST
Form Type		BHST	Job Started	02 - Dec - 2010	10:00	MST
Job depth MD	807. ft	Job Depth TVD	Job Completed	02 - Dec - 2010	13:48	MST
Water Depth		Wk Ht Above Floor	Departed Loc	02 - Dec - 2010	14:31	MST
Perforation Depth (MD)	From	To			16:00	MST

Well Data

Description	New / Used	Max pressure psig	Size in	ID in	Weight lbm/ft	Thread	Grade	Top MD ft	Bottom MD ft	Top TVD ft	Bottom TVD ft
-------------	------------	-------------------	---------	-------	---------------	--------	-------	-----------	--------------	------------	---------------

Sales/Rental/3rd Party (HES)

Description	Qty	Qty uom	Depth	Supplier
PLUG,CMTG,TOP,9 5/8,HWE,8.16 MIN/9.06 MA	1	EA		

Tools and Accessories

Type	Size	Qty	Make	Depth	Type	Size	Qty	Make	Depth	Type	Size	Qty	Make
Guide Shoe					Packer					Top Plug	9 5/8	1	HES
Float Shoe					Bridge Plug					Bottom Plug			
Float Collar					Retainer					SSR plug set			
Insert Float										Plug Container	9 5/8	1	HES
Stage Tool										Centralizers			

Miscellaneous Materials

Gelling Agt	Conc	Surfactant	Conc	Acid Type	Qty	Conc	%
Treatment Fld	Conc	Inhibitor	Conc	Sand Type	Size		Qty

Fluid Data

Stage/Plug #: 1	Fluid #	Stage Type	Fluid Name	Qty	Qty uom	Mixing Density lbm/gal	Yield ft3/sk	Mix Fluid Gal/sk	Rate bbl/min	Total Mix Fluid Gal/sk
-----------------	---------	------------	------------	-----	---------	------------------------	--------------	------------------	--------------	------------------------

Stage/Plug #: 1									
Fluid #	Stage Type	Fluid Name	Qty	Qty uom	Mixing Density lbm/gal	Yield ft ³ /sk	Mix Fluid Gal/sk	Rate bbl/min	Total Mix Fluid Gal/sk
1	Water Spacer		20.00	bbl	.	.0	.0	.0	
2	VersaCem Lead Slurry	VERSACEM (TM) SYSTEM (452010)	120.0	sacks	12.3	2.38	13.77		13.77
	13.77 Gal	FRESH WATER							
3	SwiftCem Tail Slurry	SWIFTCEM (TM) SYSTEM (452990)	120.0	sacks	14.2	1.43	6.85		6.85
	6.85 Gal	FRESH WATER							
4	Displacement		55.00	bbl	.	.0	.0	.0	
Calculated Values		Pressures		Volumes					
Displacement	55	Shut In: Instant		Lost Returns	0	Cement Slurry	81.4	Pad	
Top Of Cement	SURFACE	5 Min		Cement Returns	33	Actual Displacement	54	Treatment	
Frac Gradient		15 Min		Spacers	20	Load and Breakdown		Total Job	139
Rates									
Circulating		Mixing	5	Displacement	5	Avg. Job		5	
Cement Left In Pipe	Amount	41.35 ft	Reason	Shoe Joint					
Frac Ring # 1 @	ID	Frac ring # 2 @	ID	Frac Ring # 3 @	ID	Frac Ring # 4 @	ID		
The Information Stated Herein Is Correct				Customer Representative Signature					

The Road to Excellence Starts with Safety

Sold To #: 343492	Ship To #: 2822765	Quote #:	Sales Order #: 7811722
Customer: BILL BARRETT CORPORATION E-BILL		Customer Rep: South, Jody	
Well Name: GGU FEDERAL	Well #: 31C-29-691	API/UWI #: 05-045-19807	
Field: MAMM CREEK	City (SAP): SILT	County/Parish: Garfield	State: Colorado
Legal Description:			
Lat: N 39.503 deg. OR N 39 deg. 30 min. 10.235 secs.		Long: W 107.573 deg. OR W -108 deg. 25 min. 35.81 secs.	
Contractor: Pro Petro		Rig/Platform Name/Num: Pro Petro	
Job Purpose: Cement Surface Casing			Ticket Amount:
Well Type: Development Well		Job Type: Cement Surface Casing	
Sales Person: METLI, MARSHALL		Srv Supervisor: KUKUS, CRAIG	MBU ID Emp #: 369124

Activity Description	Date/Time	Cht #	Rate bbl/min	Volume bbl		Pressure psig		Comments
				Stage	Total	Tubing	Casing	
Call Out	12/02/2010 05:00							
Depart Yard Safety Meeting	12/02/2010 07:30							SAFETY MEETING INVOLVING THE ENTIRE CMT CREW
Arrive At Loc	12/02/2010 10:00							RIG JUST FINISHED DRILLING / STARTING TO RUN CSG
Assessment Of Location Safety Meeting	12/02/2010 10:15							ASSESSMENT OF LOCATION INVOLVING THE ENTIRE CMT CREW
Pre-Rig Up Safety Meeting	12/02/2010 10:20							SAFETY MEETING INVOLVING THE ENTIRE CMT CREW
Rig-Up Equipment	12/02/2010 10:25							
Circulate Well	12/02/2010 10:25							NONE
Pre-Job Safety Meeting	12/02/2010 13:30							SAFETY MEETING INVOLVING EVERYONE ON LOCATION
Start Job	12/02/2010 13:48							T.D 780 T.P 740.08 FT S.J 41.35 FT OH 12 3/8 MUD WT 8.3 PIPE 9 5/8 32.3
Other	12/02/2010 13:49		2	2				FILL LINES
Pressure Test	12/02/2010 13:49		0.5			2500.0		PRESSURE TEST GOOD
Pump Spacer 1	12/02/2010 13:57		5	20				FRESH WATER SPACER
Activity Description	Date/Time	Cht #	Rate bbl/min	Volume bbl		Pressure psig		Comments
				Stage	Total	Tubing	Casing	

Sold To # : 343492

Ship To # :2822765

Quote # :

Sales Order # :

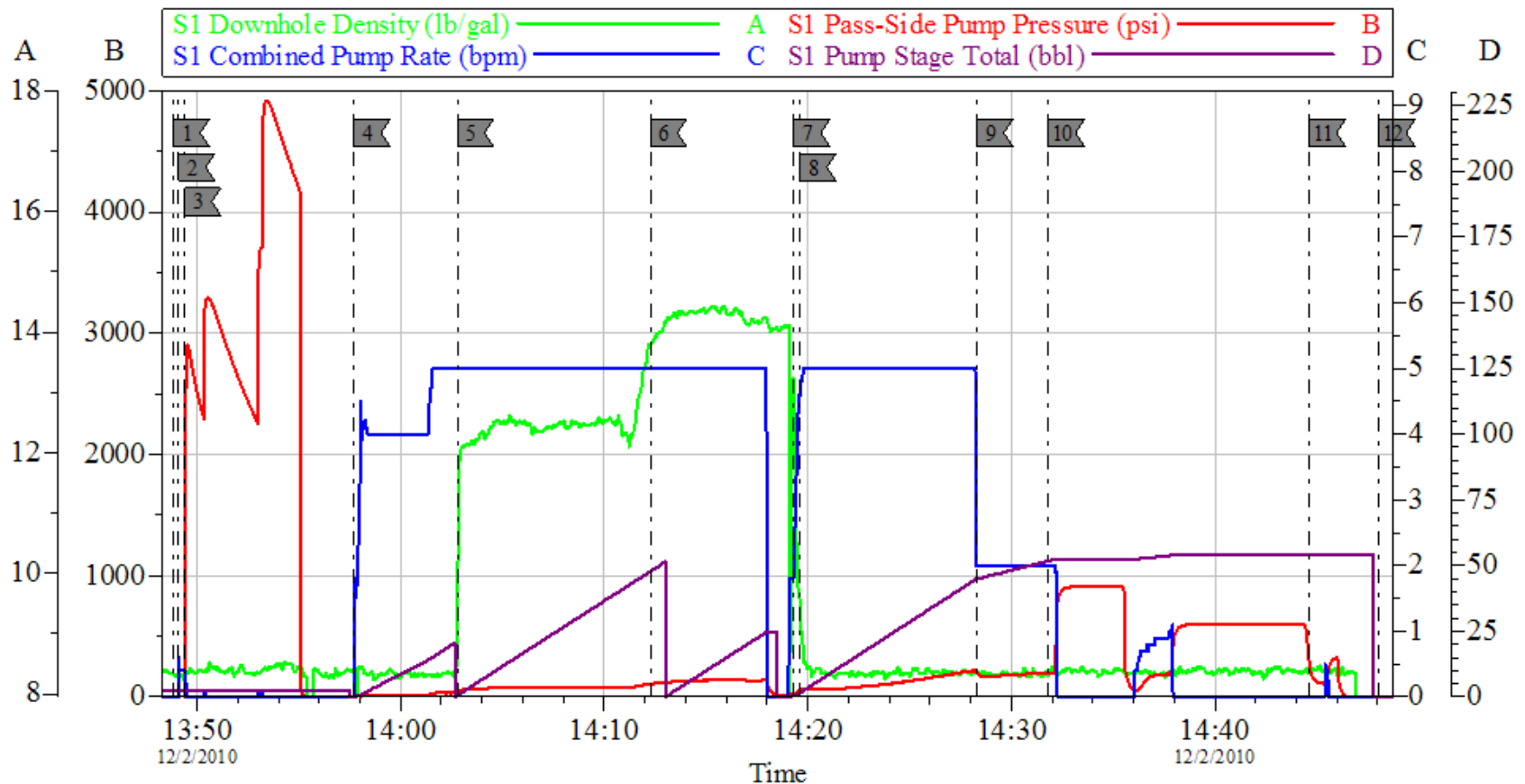
7811722

SUMMIT Version: 7.20.130

Monday, December 06, 2010 11:12:00

Pump Lead Cement	12/02/2010 14:02		5	50.8			113.0	PUMP LEAD CEMENT AT 12.3 PPG 2.38 Y 13.77 GAL/SKS / NO RETURNS
Pump Tail Cement	12/02/2010 14:12		5	30.6			157.0	PUMP TAIL CEMENT AT 14.2 PPG 1.43 Y 6.85 GAL/SKS / GOT RETURNS 12 BBL INTO TAIL CEMENT
Shutdown	12/02/2010 14:19							
Drop Top Plug	12/02/2010 14:19							PLUG LEFT THE PLUG CONTAINER
Pump Displacement	12/02/2010 14:19		5	55			235.0	PUMP FRESH WATER DISPLACEMENT
Slow Rate	12/02/2010 14:28		2	45			189.0	SLOW RATE LAST 10 BBL
Bump Plug	12/02/2010 14:31		2	55			914.0	PLUG LANDED / LANDED 225
Check Floats	12/02/2010 14:44							FLOATS HELD / HAD RETURNS THRU OUT DISPLACEMENT / GOT 33 BBL CEMENT BACK TO SURFACE/ SHUT IN 2 IN ON HEAD
End Job	12/02/2010 14:48							
Pre-Rig Down Safety Meeting	12/02/2010 14:50							SAFETY MEETING INVOLVING THE ENTIRE CMT CREW
Rig-Down Equipment	12/02/2010 14:56							
Safety Meeting - Departing Location	12/02/2010 15:50							SAFETY MEETING INVOLVING THE ENTIRE CMT CREW
Comment	12/02/2010 16:00							THANK YOU FOR USING HALLIBURTON, CRAIG KUKUS AND CREW

BARRETT SURFACE



Local Event Log			
1 START JOB	13:48:50	2 PRIME LINES	13:49:06
3 PRESSURE TEST	13:49:23	4 PUMP H2O SPACER	13:57:43
5 PUMP LEAD CEMENT	14:02:47	6 PUMP TAIL CEMENT	14:12:16
7 SHUT DOWN/DROP PLUG	14:19:18	8 PUMP H2O DISPLACEMENT	14:19:36
9 SLOW RATE	14:28:18	10 BUMP PLUG	14:31:49
11 CHECK FLOATS	14:44:38	12 END JOB	14:48:03

Customer: BARRETT
Well Description: GGU FED 31C-29-691
Company Rep: JODY SOUTH

Job Date: 02-Dec-2010
Job Type: SURFACE
Cement Supervisor: CRAIG KUKUS

Sales Order #: 7711722
ADC Used: YES
Elite #/Operator: ELITE 6 STEVE BORSZICH

OptiCem v6.4.8
02-Dec-10 14:51