
BILL BARRETT CORPORATION E-BILL

**GGU FED 42D-29-691
MAMM CREEK
Garfield County , Colorado**

Cement Surface Casing
07-Dec-2010

Post Job Summary

The Road to Excellence Starts with Safety

Sold To #: 343492		Ship To #: 2822749		Quote #:		Sales Order #: 7811593	
Customer: BILL BARRETT CORPORATION E-BILL				Customer Rep: South, Jody			
Well Name: GGU FED			Well #: 42D-29-691			API/UWI #:	
Field: MAMM CREEK		City (SAP): SILT		County/Parish: Garfield		State: Colorado	
Lat: N 39.503 deg. OR N 39 deg. 30 min. 9.796 secs.				Long: W 107.573 deg. OR W -108 deg. 25 min. 36.901 secs.			
Contractor: Pro Petro			Rig/Platform Name/Num: Pro Petro				
Job Purpose: Cement Surface Casing							
Well Type: Development Well			Job Type: Cement Surface Casing				
Sales Person: METLI, MARSHALL			Srvc Supervisor: KUKUS, CRAIG			MBU ID Emp #: 369124	

Job Personnel

HES Emp Name	Exp Hrs	Emp #	HES Emp Name	Exp Hrs	Emp #	HES Emp Name	Exp Hrs	Emp #
ANGLESTEIN, TROY Edward WM	15	436099	CHASTAIN, DERICK Allan	15	455848	KUKUS, CRAIG A	15	369124
LOPEZ, GERALD Wayne	15	479828						

Equipment

HES Unit #	Distance-1 way	HES Unit #	Distance-1 way	HES Unit #	Distance-1 way	HES Unit #	Distance-1 way
10592964	60 mile	10744549	60 mile	10744648C	60 mile	10829469	60 mile
10998508	60 mile						

Job Hours

Date	On Location Hours	Operating Hours	Date	On Location Hours	Operating Hours	Date	On Location Hours	Operating Hours
12/6/10	10.5	0	12/7/10	5	3			

TOTAL Total is the sum of each column separately

Job

Formation Name	Top	Bottom	Called Out	Date	Time	Time Zone
Formation Depth (MD)			On Location	06 - Dec - 2010	13:00	MST
Form Type		BHST	Job Started	06 - Dec - 2010	13:00	MST
Job depth MD	820. ft	Job Depth TVD	Job Completed	07 - Dec - 2010	02:58	MST
Water Depth		Wk Ht Above Floor	Departed Loc	07 - Dec - 2010	03:44	MST
Perforation Depth (MD)	From	To		07 - Dec - 2010	05:00	MST

Well Data

Description	New / Used	Max pressure psig	Size in	ID in	Weight lbm/ft	Thread	Grade	Top MD ft	Bottom MD ft	Top TVD ft	Bottom TVD ft
-------------	------------	-------------------	---------	-------	---------------	--------	-------	-----------	--------------	------------	---------------

Sales/Rental/3rd Party (HES)

Description	Qty	Qty uom	Depth	Supplier
R/A DENSOMETER W/CHART RECORDER,/JOB,ZI	1	JOB		
ADC (AUTO DENSITY CTRL) SYS, /JOB,ZI	1	JOB		
PORT. DATA ACQUIS. W/OPTICEM RT W/HES	1	EA		

Tools and Accessories

Type	Size	Qty	Make	Depth	Type	Size	Qty	Make	Depth	Type	Size	Qty	Make
Guide Shoe					Packer					Top Plug	9 5/8	1	HES
Float Shoe					Bridge Plug					Bottom Plug			
Float Collar					Retainer					SSR plug set			
Insert Float										Plug Container	9 5/8	1	HES
Stage Tool										Centralizers			

Miscellaneous Materials

Gelling Agt	Conc	Surfactant	Conc	Acid Type	Qty	Conc	%
Treatment Fld	Conc	Inhibitor	Conc	Sand Type	Size	Qty	

Fluid Data

Stage/Plug #: 1

Fluid #	Stage Type	Fluid Name	Qty	Qty uom	Mixing Density lbm/gal	Yield ft ³ /sk	Mix Fluid Gal/sk	Rate bbl/min	Total Mix Fluid Gal/sk
1	WATER SPACER		20	bbl	.	.0	.0	.0	
2	Lead Cement	VERSACEM (TM) SYSTEM (452010)	120	sacks	12.3	2.38	13.77		13.77
	13.77 Gal	FRESH WATER							
3	Tail Cement	SWIFTCEM (TM) SYSTEM (452990)	120	sacks	14.2	1.43	6.85		6.85
	6.85 Gal	FRESH WATER							
4	DISPLACEMENT		58.7	bbl	.	.0	.0	.0	
Calculated Values		Pressures		Volumes					
Displacement	58	Shut In: Instant		Lost Returns	0	Cement Slurry	81.4	Pad	
Top Of Cement	SURFACE	5 Min		Cement Returns	31	Actual Displacement	58	Treatment	
Frac Gradient		15 Min		Spacers	20	Load and Breakdown		Total Job	161
Rates									
Circulating		Mixing	5	Displacement	5	Avg. Job			5
Cement Left In Pipe	Amount	44.20 ft	Reason	Shoe Joint					
Frac Ring # 1 @	ID		Frac ring # 2 @	ID		Frac Ring # 3 @	ID		Frac Ring # 4 @
The Information Stated Herein Is Correct				Customer Representative Signature					

The Road to Excellence Starts with Safety

Sold To #: 343492	Ship To #: 2822749	Quote #:	Sales Order #: 7811593
Customer: BILL BARRETT CORPORATION E-BILL		Customer Rep: South, Jody	
Well Name: GGU FED		Well #: 42D-29-691	API/UWI #:
Field: MAMM CREEK	City (SAP): SILT	County/Parish: Garfield	State: Colorado
Legal Description:			
Lat: N 39.503 deg. OR N 39 deg. 30 min. 9.796 secs.		Long: W 107.573 deg. OR W -108 deg. 25 min. 36.901 secs.	
Contractor: Pro Petro		Rig/Platform Name/Num: Pro Petro	
Job Purpose: Cement Surface Casing			Ticket Amount:
Well Type: Development Well		Job Type: Cement Surface Casing	
Sales Person: METLI, MARSHALL		Srv Supervisor: KUKUS, CRAIG	MBU ID Emp #: 369124

Activity Description	Date/Time	Cht #	Rate bbl/min	Volume bbl		Pressure psig		Comments
				Stage	Total	Tubing	Casing	
Call Out	12/06/2010 13:00							CREW STAYED ON LOCATION FOR 2ND JOB
Arrive At Loc	12/06/2010 13:00							
Assessment Of Location Safety Meeting	12/06/2010 13:00							ASSESSMENT OF LOCATION INVOLVING THE ENTIRE CMT CREW
Pre-Rig Up Safety Meeting	12/07/2010 01:55							SAFETY MEETING INVOLVING THE ENTIRE CMT CREW
Rig-Up Equipment	12/07/2010 02:00							RIG UP HEAD/LOAD PLUG
Circulate Well	12/07/2010 02:00							NONE
Pre-Job Safety Meeting	12/07/2010 02:48							SAFETY MEETING INVOLVING EVERYONE ON LOCATION
Start Job	12/07/2010 02:58							T.D 820 FT T.P 804.25 FT S.J 44.20 FT OH 12 3/8 MUD WT 8.3 PIPE 9 5/8 36#
Other	12/07/2010 02:58		2	2			20.0	FILL LINES
Pressure Test	12/07/2010 02:59		0.5			3700.0		PRESSURE TEST GOOD
Pump Spacer 1	12/07/2010 03:01		5	20			122.0	FRESH WATER SPACER
Pump Lead Cement	12/07/2010 03:06		5	50.8			230.0	120 SKS LEAD CEMENT PUMPED AT 12.3 PPG 2.38 Y 13.77 GAL/SKS
Activity Description	Date/Time	Cht	Rate bbl/min	Volume bbl		Pressure psig		Comments

Sold To # : 343492

Ship To # :2822749

Quote # :

Sales Order # : 7811593

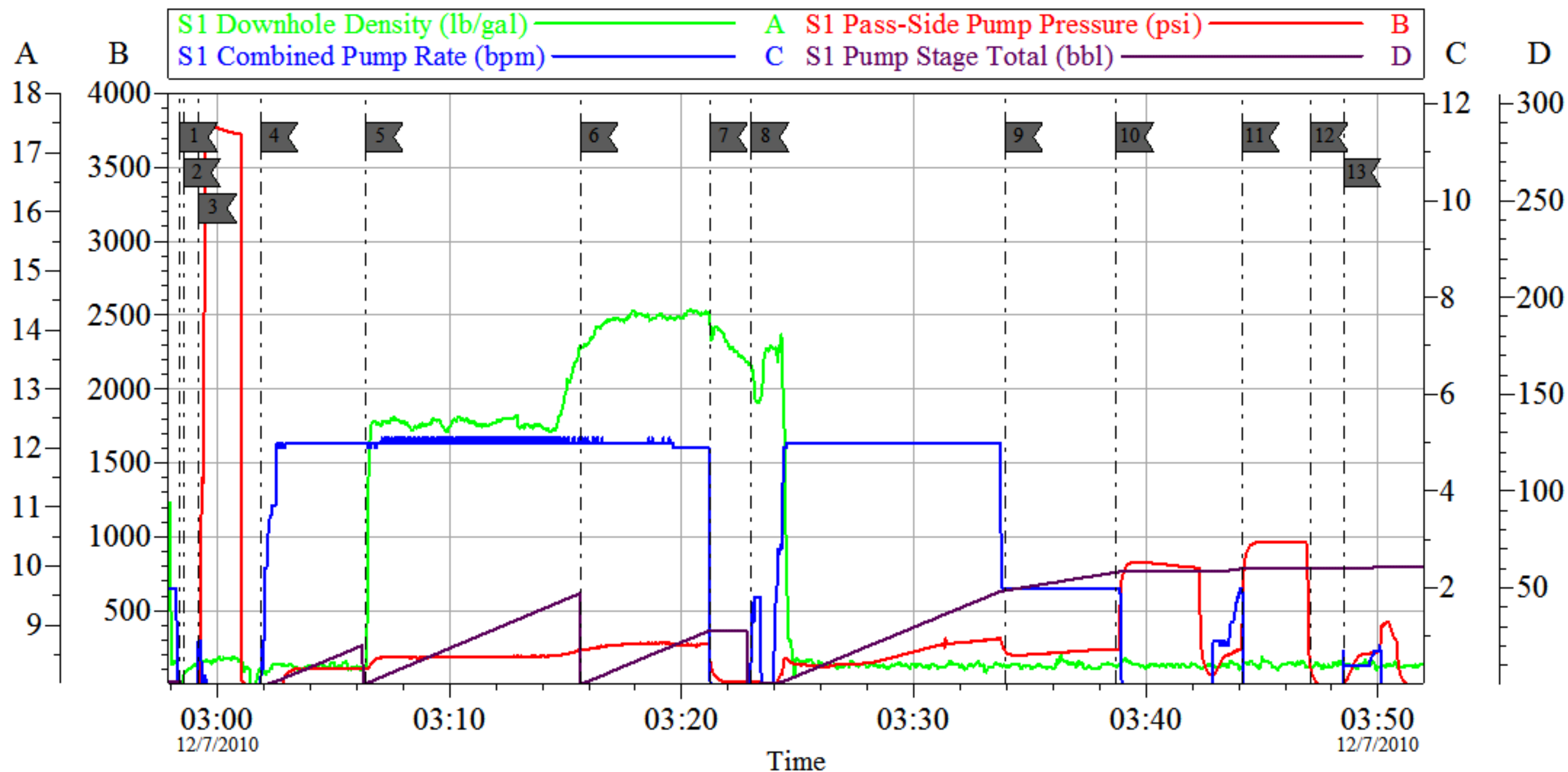
SUMMIT Version: 7.20.130

Tuesday, December 07, 2010 04:59:00

Cementing Job Log

		#		Stage	Total	Tubing	Casing	
Pump Tail Cement	12/07/2010 03:15		5	30.6			292.0	120 SKS TAIL CEMENT PUMPED AT 14.2 PPG 1.43 Y 6.85 GAL/SKS / GOT RETURNS AT 27 BBL TAIL CEMENT GONE
Shutdown	12/07/2010 03:21							
Drop Top Plug	12/07/2010 03:21							PLUG LEFT THE PLUG CONTAINER
Pump Displacement	12/07/2010 03:23		5	58.7			325.0	PUMP FRESH WATER DISPLACEMENT/ GOT CEMENT BACK AT 26 BBL GONE
Slow Rate	12/07/2010 03:33		2	48			260.0	SLOW RATE LAST 10 BBL TO 2 BBL MIN
Bump Plug	12/07/2010 03:44		2	59			980.0	PLUG LANDED AT 250 PSI / BUMPED TO 840 PSI / BUMPED 2ND TIME UP TO 980 PSI
Check Floats	12/07/2010 03:47							FLOATS HELD / SHUT IN HEAD WITH 300 PSI
End Job	12/07/2010 03:48							GOT 31 BBL CEMENT BACK TO SURFACE
Pre-Rig Down Safety Meeting	12/07/2010 03:50							SAFETY MEETING INVOLVING THE ENTIRE CMT CREW
Rig-Down Equipment	12/07/2010 03:55							RIG DOWN PUMP AND IRON MOVE PUMP UNIT TO OTHER SIDE OF TANKS
Safety Meeting - Departing Location	12/07/2010 04:50							SAFETY MEETING INVOLVING THE ENTIRE CMT CREW/ CREW RETURNED TO YARD FOR CEMENT FOR NEXT 2 WELLS
Comment	12/07/2010 05:00							THANK YOU FOR USING HALLIBURTON, CRAIG KUKUS AND CREW

BARRETT SURFACE



Local Event Log

1	START JOB	02:58:23	2	PRIME LINES	02:58:32	3	PRESSURE TEST	02:59:12
4	PUMP H2O SPACER	03:01:51	5	PUMP LEADCEMENT	03:06:24	6	PUMP TAIL CEMENT	03:15:40
7	SHUT DOWN /DROP PLUG	03:21:14	8	PUMP H2O DISPLACEMENT	03:23:00	9	SLOW RATE	03:33:57
10	BUMP PLUG	03:38:44	11	BUMP PLUG	03:44:08	12	CHECK FLOATS	03:47:06
13	END JOB	03:48:31						

Customer: BARRETT
Well Description: GGU FED 42D-29-691
Company Rep: JODY SOUTH

Job Date: 07-Dec-2010
Job Type: SURFACE
Cement Supervisor: CRAIG KUKUS

Sales Order #: 7811593
ADC Used: YES
Elite #/Operator: ELITE 6 TROY ANGLESTEIN

OptiCem v6.4.8
07-Dec-10 04:01