

---

# **BILL BARRETT CORPORATION E-BILL**

---

**GGU FEDERAL 31A-29-691  
MAMM CREEK  
Garfield County , Colorado**

**Cement Surface Casing**  
**08-Dec-2010**

**Post Job Report**

## The Road to Excellence Starts with Safety

<b>Sold To #:</b> 343492		<b>Ship To #:</b> 2822758		<b>Quote #:</b>		<b>Sales Order #:</b> 7812399							
<b>Customer:</b> BILL BARRETT CORPORATION E-BILL				<b>Customer Rep:</b> South, Jody									
<b>Well Name:</b> GGU FEDERAL			<b>Well #:</b> 31A-29-691		<b>API/UWI #:</b> 05-045-19798								
<b>Field:</b> MAMM CREEK		<b>City (SAP):</b> SILT		<b>County/Parish:</b> Garfield		<b>State:</b> Colorado							
<b>Lat:</b> N 39.503 deg. OR N 39 deg. 30 min. 10.084 secs.				<b>Long:</b> W 107.573 deg. OR W -108 deg. 25 min. 35.954 secs.									
<b>Contractor:</b> Pro Petro			<b>Rig/Platform Name/Num:</b> Pro Petro										
<b>Job Purpose:</b> Cement Surface Casing													
<b>Well Type:</b> Development Well				<b>Job Type:</b> Cement Surface Casing									
<b>Sales Person:</b> METLI, MARSHALL			<b>Srvc Supervisor:</b> MAGERS, MICHAEL		<b>MBU ID Emp #:</b> 339439								
<b>Job Personnel</b>													
<b>HES Emp Name</b>	<b>Exp Hrs</b>	<b>Emp #</b>	<b>HES Emp Name</b>	<b>Exp Hrs</b>	<b>Emp #</b>	<b>HES Emp Name</b>	<b>Exp Hrs</b>	<b>Emp #</b>					
ANGLESTEIN, TROY Edward WM	15	436099	BORSZICH, STEPHEN A	8	412388	LOPEZ, GERALD Wayne	17	479828					
MAGERS, MICHAEL Gerard	8	339439											
<b>Equipment</b>													
<b>HES Unit #</b>	<b>Distance-1 way</b>	<b>HES Unit #</b>	<b>Distance-1 way</b>	<b>HES Unit #</b>	<b>Distance-1 way</b>	<b>HES Unit #</b>	<b>Distance-1 way</b>						
11259886	120	10998508	120	10744648	120	10741123	10713212						
<b>Job Hours</b>													
<b>Date</b>	<b>On Location Hours</b>	<b>Operating Hours</b>	<b>Date</b>	<b>On Location Hours</b>	<b>Operating Hours</b>	<b>Date</b>	<b>On Location Hours</b>	<b>Operating Hours</b>					
12/08/2010	17	1											
<b>TOTAL</b>		Total is the sum of each column separately											
<b>Job</b>				<b>Job Times</b>									
<b>Formation Name</b>					<b>Date</b>	<b>Time</b>	<b>Time Zone</b>						
<b>Formation Depth (MD)</b>	<b>Top</b>	<b>Bottom</b>		<b>Called Out</b>	08 - Dec - 2010	02:00	MST						
<b>Form Type</b>	BHST			<b>On Location</b>	08 - Dec - 2010	02:00	MST						
<b>Job depth MD</b>	848. ft		<b>Job Depth TVD</b>	848. ft	<b>Job Started</b>	08 - Dec - 2010	17:43	MST					
<b>Water Depth</b>	Wk Ht Above Floor			3. ft	<b>Job Completed</b>	08 - Dec - 2010	18:33	MST					
<b>Perforation Depth (MD)</b>	<b>From</b>	<b>To</b>		<b>Departed Loc</b>	08 - Dec - 2010	19:30	MST						
<b>Well Data</b>													
<b>Description</b>	<b>New / Used</b>	<b>Max pressure psig</b>	<b>Size in</b>	<b>ID in</b>	<b>Weight lbm/ft</b>	<b>Thread</b>	<b>Grade</b>	<b>Top MD ft</b>	<b>Bottom MD ft</b>	<b>Top TVD ft</b>	<b>Bottom TVD ft</b>		
<b>Sales/Rental/3<sup>rd</sup> Party (HES)</b>													
<b>Description</b>					<b>Qty</b>	<b>Qty uom</b>	<b>Depth</b>	<b>Supplier</b>					
PLUG,CMTG,TOP,9 5/8,HWE,8.16 MIN/9.06 MA					1	EA							
<b>Tools and Accessories</b>													
<b>Type</b>	<b>Size</b>	<b>Qty</b>	<b>Make</b>	<b>Depth</b>	<b>Type</b>	<b>Size</b>	<b>Qty</b>	<b>Make</b>	<b>Depth</b>	<b>Type</b>	<b>Size</b>	<b>Qty</b>	<b>Make</b>
Guide Shoe					Packer					Top Plug	9.625	1	HES
Float Shoe					Bridge Plug					Bottom Plug			
Float Collar					Retainer					SSR plug set			
Insert Float										Plug Container	9.625	1	HES
Stage Tool										Centralizers			
<b>Miscellaneous Materials</b>													
<b>Gelling Agt</b>		<b>Conc</b>		<b>Surfactant</b>		<b>Conc</b>		<b>Acid Type</b>		<b>Qty</b>		<b>Conc</b>	<b>%</b>
<b>Treatment Fld</b>		<b>Conc</b>		<b>Inhibitor</b>		<b>Conc</b>		<b>Sand Type</b>		<b>Size</b>		<b>Qty</b>	

Fluid Data										
Stage/Plug #: 1										
Fluid #	Stage Type	Fluid Name	Qty	Qty uom	Mixing Density lbm/gal	Yield ft <sup>3</sup> /sk	Mix Fluid Gal/sk	Rate bbl/min	Total Mix Fluid Gal/sk	
1	Water Spacer		20.00	bbl	.	.0	.0	.0		
2	VersaCem Lead Slurry	VERSACEM (TM) SYSTEM (452010)	120.0	sacks	12.3	2.38	13.77		13.77	
	13.77 Gal	FRESH WATER								
3	SwiftCem Tail Slurry	SWIFTCEM (TM) SYSTEM (452990)	120.0	sacks	14.2	1.43	6.85		6.85	
	6.85 Gal	FRESH WATER								
4	Displacement		58.00	bbl	.	.0	.0	.0		
Calculated Values		Pressures		Volumes						
Displacement	57.5	Shut In: Instant		Lost Returns	0	Cement Slurry	81.5	Pad		
Top Of Cement	SURFACE	5 Min		Cement Returns	24	Actual Displacement	58.5	Treatment		
Frac Gradient		15 Min		Spacers	20	Load and Breakdown		Total Job	160	
Rates										
Circulating	NONE	Mixing	5	Displacement	5/2	Avg. Job	5			
Cement Left In Pipe	Amount	44.9ft	Reason	Shoe Joint						
Frac Ring # 1 @	ID	Frac ring # 2 @	ID	Frac Ring # 3 @	ID	Frac Ring # 4 @	ID			
The Information Stated Herein Is Correct				Customer Representative Signature						

*The Road to Excellence Starts with Safety*

<b>Sold To #:</b> 343492	<b>Ship To #:</b> 2822758	<b>Quote #:</b>	<b>Sales Order #:</b> 7812399
<b>Customer:</b> BILL BARRETT CORPORATION E-BILL		<b>Customer Rep:</b> South, Jody	
<b>Well Name:</b> GGU FEDERAL	<b>Well #:</b> 31A-29-691	<b>API/UWI #:</b> 05-045-19798	
<b>Field:</b> MAMM CREEK	<b>City (SAP):</b> SILT	<b>County/Parish:</b> Garfield	<b>State:</b> Colorado
<b>Legal Description:</b>			
<b>Lat:</b> N 39.503 deg. OR N 39 deg. 30 min. 10.084 secs.		<b>Long:</b> W 107.573 deg. OR W -108 deg. 25 min. 35.954 secs.	
<b>Contractor:</b> Pro Petro		<b>Rig/Platform Name/Num:</b> Pro Petro	
<b>Job Purpose:</b> Cement Surface Casing			<b>Ticket Amount:</b>
<b>Well Type:</b> Development Well		<b>Job Type:</b> Cement Surface Casing	
<b>Sales Person:</b> METLI, MARSHALL		<b>Srv Supervisor:</b> MAGERS, MICHAEL	<b>MBU ID Emp #:</b> 339439

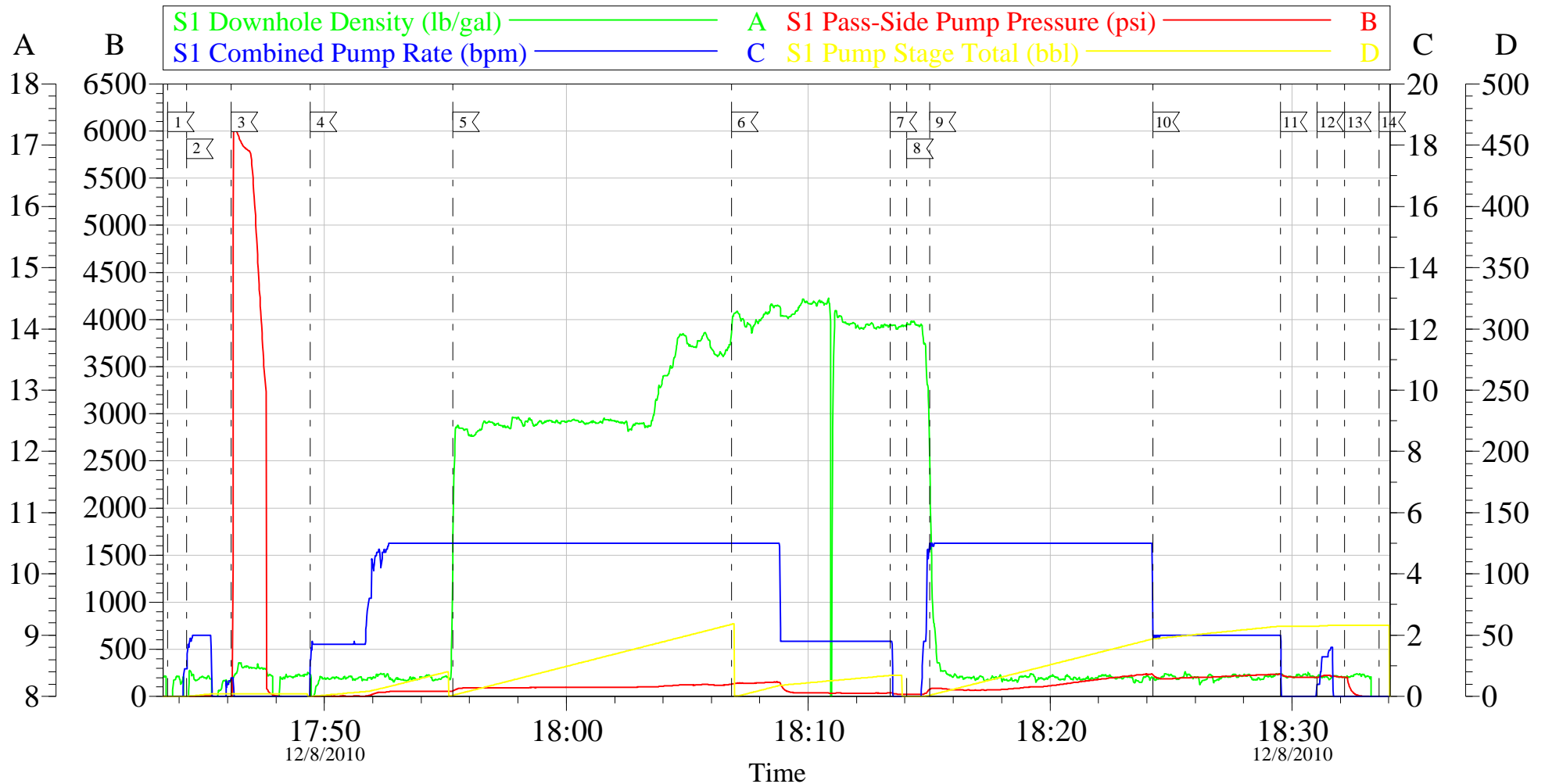
Activity Description	Date/Time	Cht #	Rate bbl/min	Volume bbl		Pressure psig		Comments
				Stage	Total	Tubing	Casing	
Arrive At Loc	12/08/2010 02:00							HES ALREADY ON LOCATION
Pre-Rig Up Safety Meeting	12/08/2010 17:00							JSA ON RIGGING UP
Rig-Up Equipment	12/08/2010 17:15							
Safety Huddle	12/08/2010 17:30							RIG CREW AND HES ALL PRESENT
Start Job	12/08/2010 17:43							TD-848 TP-828.8 SJ-44.9 CASING-9 5/8 36# J-55 OH-12 3/8" PLUG CONTAINER-SCREW IN
Other	12/08/2010 17:44		2	2			3.0	FILL LINES
Pressure Test	12/08/2010 17:46		0.5	0.5			5800.0	PSI TEST OK
Pump Spacer 1	12/08/2010 17:49		2	20			9.0	FRESH WATER
Pump Lead Cement	12/08/2010 17:55		5	50.8			99.0	120 SKS 12.3 PPG 2.38 FT3/SK 13.77 GAL/SK
Pump Tail Cement	12/08/2010 18:06		2	30.5			36.0	120 SKS 14.2 PPG 1.43 FT3/SK 6.85 GAL/SK GOT RETURNS AT 13 BBLS GONE INTO TAIL CEMENT
Shutdown	12/08/2010 18:13							
Drop Plug	12/08/2010 18:14							PLUG AWAY NO PROBLEM
Pump Displacement	12/08/2010 18:15		5	57.5			235.0	FRESH WATER

## Cementing Job Log

Activity Description	Date/Time	Cht #	Rate bbl/ min	Volume bbl		Pressure psig		Comments
				Stage	Total	Tubing	Casing	
Slow Rate	12/08/2010 18:24		2	47			197.0	GOT CEMENT TO SURFACE AT 35 BBLS INTO DISPLACEMENT/GOT 24 BBLS OF CEMENT TO SURFACE
Shutdown	12/08/2010 18:29		2	57.5				SHUT DOWN AT CALCULATED DISPLACEMENT/PLUG DID NOT BUMP
Resume	12/08/2010 18:31		2	1				PER DRILLER PUMPED 1 MORE BBL
Shut In Well	12/08/2010 18:32			58.5			213.0	SHUT IN WELL WITH 213 PSI
End Job	12/08/2010 18:33							THANKS FOR USING HES AND THE CREW OF MIKE MAGERS

# BILL BARRETT-PRO PETRO

## SURFACE



Customer: BILL BARRETT  
Well Description: GGU FED 31A-29-691  
Company Rep: JODI SOUTH

Job Date: 08-Dec-2010  
Job Type: SURFACE  
Cement Supervisor: MIKE MAGERS

Sales Order #: 7812399  
ADC Used: YES  
Elite #: 6 STEVE BORSZICH

OptiCem v6.3.4  
08-Dec-10 18:50