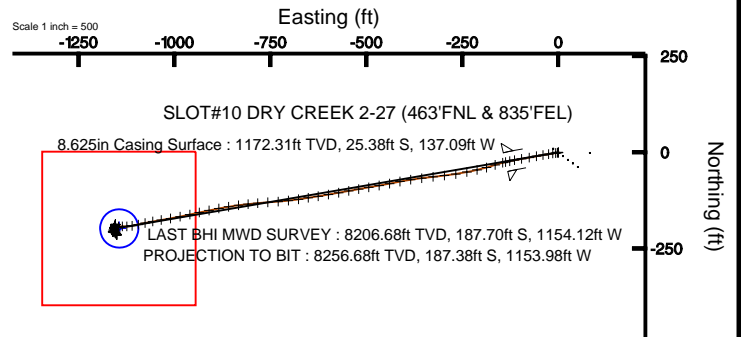
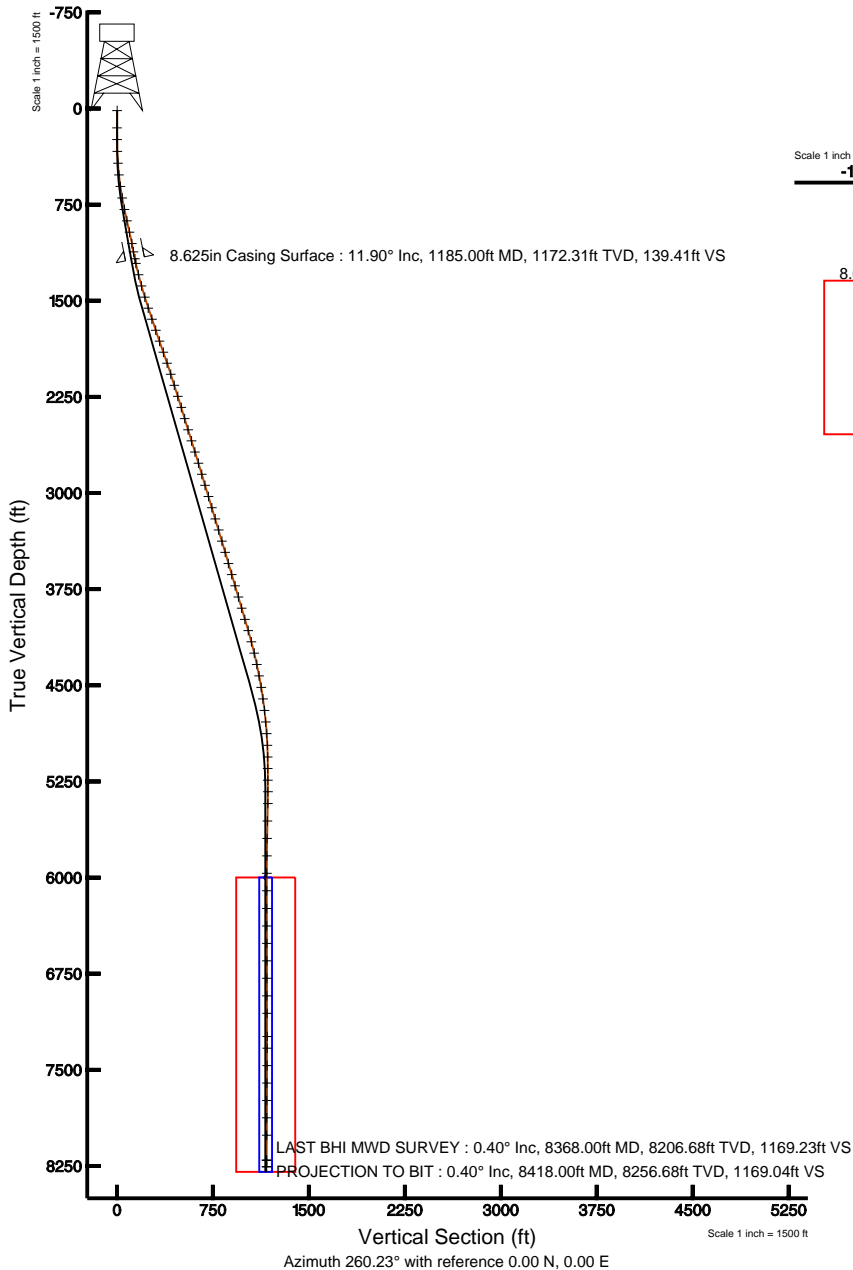


KERR MCGEE OIL & GAS ONSHORE LP

Location: COLORADO Slot: SLOT#10 DRY CREEK 2-27 (463'FNL & 835'FEL)
 Field: WELD COUNTY (KERR MCGEE) Well: DRY CREEK 2-27
 Facility: SEC.27-T1N-R67W Wellbore: DRY CREEK 2-27 PWB



Plot reference wellpath is DRY CREEK 2-27 (REV-B.0) PWB	
True vertical depths are referenced to XTREME 12 (RKB)	Grid System: NAD83 / Lambert Colorado State Planes, Northern Zone (501), US feet
Measured depths are referenced to XTREME 12 (RKB)	North Reference: True north
XTREME 12 (RKB) to Mean Sea Level: 5008 feet	Scale: True distance
Mean Sea Level to Mud line (Facility: SEC.27-T1N-R67W): 0 feet	Depths are in feet
Coordinates are in feet referenced to Slot	Created by: cackdamm on 12/14/2010



N
TRUE
MAG
W E

BGGM (1945.0 to 2012.0) Dip: 66.76° Field: 53002 nT
 Magnetic North is 8.94 degrees East of True North (at 11/18/2010)

To correct azimuth from Magnetic to True add 8.94 degrees
 For example: if the Magnetic North Azimuth = 90 degs, then the Grid North Azimuth = 90 + 8.94 = 98.94



Actual Wellpath Report

DRY CREEK 2-27 awp

Page 1 of 5



INTEQ

REFERENCE WELLPATH IDENTIFICATION

Operator	KERR MCGEE OIL & GAS ONSHORE LP	Slot	SLOT#10 DRY CREEK 2-27 (463'FNL & 835'FEL)
Area	COLORADO	Well	DRY CREEK 2-27
Field	WELD COUNTY (KERR MCGEE)	Wellbore	DRY CREEK 2-27 awb
Facility	SEC.27-T1N-R67W		

REPORT SETUP INFORMATION

Projection System	NAD83 / Lambert Colorado State Planes, Northern Zone (501), US feet	Software System	WellArchitect® 2.0
North Reference	True	User	Cookdanm
Scale	0.999964	Report Generated	12/14/2010 at 10:50:05 AM
Convergence at slot	0.41° East	Database/Source file	Denver Server/DRY_CREEK_2-27_awb.xml

WELLPATH LOCATION

	Local coordinates		Grid coordinates		Geographic coordinates	
	North[ft]	East[ft]	Easting[USft]	Northing[USft]	Latitude	Longitude
Slot Location	712.03	3261.17	3176353.99	1253703.33	40°01'41.102"N	104°52'12.882"W
Facility Reference Pt			3173097.99	1252968.61	40°01'34.068"N	104°52'54.804"W
Field Reference Pt			3197771.84	1268891.29	40°04'09.600"N	104°47'36.000"W

WELLPATH DATUM

Calculation method	Minimum curvature	XTREME 12 (RKB) to Facility Vertical Datum	5008.00ft
Horizontal Reference Pt	Slot	XTREME 12 (RKB) to Mean Sea Level	5008.00ft
Vertical Reference Pt	XTREME 12 (RKB)	Facility Vertical Datum to Mud Line (Facility)	0.00ft
MD Reference Pt	XTREME 12 (RKB)	Section Origin	N 0.00, E 0.00 ft
Field Vertical Reference	Mean Sea Level	Section Azimuth	260.23°



Actual Wellpath Report

DRY CREEK 2-27 awp

Page 2 of 5



REFERENCE WELLPATH IDENTIFICATION

Operator	KERR MCGEE OIL & GAS ONSHORE LP	Slot	SLOT#10 DRY CREEK 2-27 (463'FNL & 835'FEL)
Area	COLORADO	Well	DRY CREEK 2-27
Field	WELD COUNTY (KERR MCGEE)	Wellbore	DRY CREEK 2-27 awb
Facility	SEC.27-T1N-R67W		

WELLPATH DATA (84 stations) † = interpolated/extrapolated station

MD [ft]	Inclination [°]	Azimuth [°]	TVD [ft]	Vert Sect [ft]	North [ft]	East [ft]	DLS [°/100ft]	Comments
0.00†	0.000	122.800	0.00	0.00	0.00	0.00	0.00	
15.00	0.000	122.800	15.00	0.00	0.00	0.00	0.00	
150.00	0.600	122.800	150.00	-0.52	-0.38	0.59	0.44	
242.00	0.800	252.900	241.99	-0.24	-0.83	0.39	1.38	
334.00	2.000	262.400	333.97	2.00	-1.23	-1.82	1.32	
426.00	3.800	261.700	425.84	6.66	-1.89	-6.43	1.96	
518.00	5.800	262.100	517.52	14.35	-2.97	-14.05	2.17	
609.00	8.100	260.300	607.84	25.36	-4.68	-24.93	2.54	
700.00	10.400	261.000	697.65	39.98	-7.04	-39.36	2.53	
791.00	11.700	258.900	786.96	57.42	-10.10	-56.53	1.50	
882.00	12.800	260.300	875.89	76.73	-13.58	-75.52	1.25	
973.00	12.600	260.000	964.66	96.73	-17.00	-95.23	0.23	
1064.00	11.200	258.600	1053.71	115.49	-20.47	-113.67	1.57	
1130.00	11.300	258.500	1118.44	128.36	-23.03	-126.29	0.15	
1221.00	12.300	256.100	1207.51	146.94	-27.13	-144.43	1.22	
1312.00	13.800	252.900	1296.16	167.38	-32.65	-164.22	1.83	
1403.00	16.200	252.600	1384.06	190.73	-39.64	-186.71	2.64	
1494.00	16.500	259.600	1471.38	216.23	-45.77	-211.53	2.19	
1584.00	18.200	257.500	1557.29	243.05	-51.12	-237.83	2.01	
1675.00	19.500	261.400	1643.41	272.44	-56.47	-266.72	1.99	
1766.00	18.900	263.800	1729.35	302.33	-60.33	-296.39	1.09	
1857.00	19.300	263.100	1815.34	332.06	-63.73	-325.97	0.51	
1948.00	19.200	262.400	1901.25	362.03	-67.52	-355.74	0.28	
2038.00	18.500	262.800	1986.42	391.09	-71.26	-384.57	0.79	
2129.00	17.600	258.200	2072.95	419.26	-75.89	-412.36	1.85	
2220.00	17.900	258.900	2159.62	446.99	-81.39	-439.55	0.40	
2310.00	17.800	260.000	2245.28	474.58	-86.44	-466.67	0.39	
2401.00	17.200	260.000	2332.07	501.94	-91.20	-493.62	0.66	
2492.00	17.000	260.300	2419.05	528.70	-95.77	-519.99	0.24	
2583.00	16.700	259.300	2506.14	555.07	-100.44	-545.95	0.46	
2674.00	17.300	260.300	2593.17	581.68	-105.15	-572.13	0.73	
2765.00	17.300	259.300	2680.05	608.74	-109.94	-598.76	0.33	
2856.00	17.100	262.100	2766.98	635.64	-114.29	-625.31	0.94	
2947.00	16.700	260.300	2854.05	662.08	-118.33	-651.45	0.72	
3037.00	16.500	262.100	2940.30	687.79	-122.27	-676.86	0.61	
3128.00	17.300	263.500	3027.37	714.21	-125.58	-703.10	0.99	
3219.00	17.100	265.600	3114.30	741.04	-128.14	-729.89	0.72	
3310.00	17.200	265.600	3201.26	767.76	-130.20	-756.64	0.11	
3401.00	16.700	264.900	3288.30	794.19	-132.39	-783.08	0.59	
3492.00	15.600	263.800	3375.71	819.43	-134.87	-808.27	1.25	
3583.00	16.500	262.800	3463.16	844.55	-137.81	-833.25	1.03	
3674.00	16.600	260.000	3550.39	870.46	-141.69	-858.87	0.88	
3764.00	16.800	259.600	3636.60	896.32	-146.27	-884.33	0.26	
3855.00	16.700	258.200	3723.74	922.54	-151.32	-910.06	0.46	
3946.00	16.100	257.900	3811.03	948.22	-156.64	-935.20	0.67	



Actual Wellpath Report

DRY CREEK 2-27 awp

Page 3 of 5



INTEQ

REFERENCE WELLPATH IDENTIFICATION

Operator	KERR MCGEE OIL & GAS ONSHORE LP	Slot	SLOT#10 DRY CREEK 2-27 (463'FNL & 835'FEL)
Area	COLORADO	Well	DRY CREEK 2-27
Field	WELD COUNTY (KERR MCGEE)	Wellbore	DRY CREEK 2-27 awb
Facility	SEC.27-T1N-R67W		

WELLPATH DATA (84 stations)

MD [ft]	Inclination [°]	Azimuth [°]	TVD [ft]	Vert Sect [ft]	North [ft]	East [ft]	DLS [°/100ft]	Comments
4037.00	16.400	257.900	3898.40	973.66	-161.98	-960.10	0.33	
4128.00	16.400	258.200	3985.70	999.33	-167.30	-985.23	0.09	
4219.00	16.400	259.600	4072.99	1025.02	-172.24	-1010.44	0.43	
4310.00	14.900	262.100	4160.62	1049.56	-176.17	-1034.67	1.81	
4401.00	13.700	259.300	4248.80	1072.03	-179.78	-1056.85	1.52	
4492.00	12.000	256.100	4337.52	1092.24	-184.05	-1076.62	2.02	
4583.00	10.900	257.800	4426.71	1110.27	-188.14	-1094.21	1.26	
4674.00	10.000	260.000	4516.20	1126.77	-191.33	-1110.40	1.08	
4765.00	7.800	269.800	4606.10	1140.76	-192.73	-1124.36	2.93	
4856.00	6.900	270.500	4696.35	1152.23	-192.70	-1136.00	0.99	
4947.00	5.600	264.200	4786.81	1162.04	-193.10	-1145.89	1.61	
5038.00	4.300	241.000	4877.48	1169.69	-195.21	-1153.29	2.59	
5129.00	3.300	223.000	4968.28	1175.00	-198.77	-1158.06	1.70	
5220.00	1.800	178.700	5059.19	1177.29	-202.12	-1159.81	2.61	
5311.00	1.700	179.400	5150.15	1177.72	-204.90	-1159.77	0.11	
5402.00	0.600	231.100	5241.13	1178.35	-206.55	-1160.12	1.55	
5492.00	0.800	272.300	5331.13	1179.37	-206.82	-1161.12	0.59	
5584.00	1.800	110.500	5423.12	1178.76	-207.30	-1160.41	2.80	
5720.00	1.700	120.700	5559.05	1175.38	-209.08	-1156.67	0.24	
5856.00	1.000	117.600	5695.01	1172.90	-210.66	-1153.89	0.52	
5992.00	0.800	132.300	5831.00	1171.37	-211.84	-1152.13	0.22	
6128.00	0.800	160.400	5966.98	1170.62	-213.38	-1151.11	0.29	
6264.00	0.500	161.200	6102.98	1170.37	-214.83	-1150.60	0.22	
6403.00	0.100	193.900	6241.97	1170.32	-215.53	-1150.44	0.30	
6539.00	0.600	324.300	6377.97	1170.68	-215.06	-1150.88	0.49	
6675.00	1.200	336.200	6513.95	1171.34	-213.18	-1151.87	0.46	
6812.00	1.400	347.500	6650.92	1171.77	-210.24	-1152.81	0.24	
6948.00	1.800	353.500	6786.87	1171.72	-206.49	-1153.41	0.32	
7085.00	1.600	343.200	6923.81	1171.84	-202.52	-1154.21	0.27	
7221.00	1.100	328.900	7059.77	1172.54	-199.59	-1155.43	0.44	
7402.00	0.700	321.200	7240.74	1173.71	-197.24	-1157.02	0.23	
7493.00	0.700	351.000	7331.74	1173.97	-196.26	-1157.46	0.40	
7629.00	0.900	58.500	7467.73	1172.97	-194.88	-1156.68	0.66	
7766.00	0.700	20.900	7604.71	1171.54	-193.53	-1155.46	0.40	
7902.00	0.500	30.400	7740.71	1170.74	-192.24	-1154.86	0.16	
8037.00	0.600	354.900	7875.70	1170.30	-191.03	-1154.63	0.26	
8173.00	0.700	8.600	8011.69	1169.98	-189.50	-1154.57	0.14	
8368.00	0.400	23.400	8206.68	1169.23	-187.70	-1154.12	0.17	LAST BHI MWD SURVEY
8418.00	0.400	23.400	8256.68	1169.04	-187.38	-1153.98	0.00	PROJECTION TO BIT



Actual Wellpath Report

DRY CREEK 2-27 awp

Page 4 of 5



INTEQ

REFERENCE WELLPATH IDENTIFICATION			
Operator	KERR MCGEE OIL & GAS ONSHORE LP	Slot	SLOT#10 DRY CREEK 2-27 (463'FNL & 835'FEL)
Area	COLORADO	Well	DRY CREEK 2-27
Field	WELD COUNTY (KERR MCGEE)	Wellbore	DRY CREEK 2-27 awb
Facility	SEC.27-T1N-R67W		

HOLE & CASING SECTIONS Ref Wellbore: DRY CREEK 2-27 awb Ref Wellpath: DRY CREEK 2-27 awp									
String/Diameter	Start MD [ft]	End MD [ft]	Interval [ft]	Start TVD [ft]	End TVD [ft]	Start N/S [ft]	Start E/W [ft]	End N/S [ft]	End E/W [ft]
12.25in Open Hole	15.00	1185.00	1170.00	15.00	1172.31	0.00	0.00	-25.38	-137.09
8.625in Casing Surface	15.00	1185.00	1170.00	15.00	1172.31	0.00	0.00	-25.38	-137.09
7.875in Open Hole	1185.00	8418.00	7233.00	1172.31	8256.68	-25.38	-137.09	-187.38	-1153.98

TARGETS									
Name	MD [ft]	TVD [ft]	North [ft]	East [ft]	Grid East [srv ft]	Grid North [srv ft]	Latitude	Longitude	Shape
DRY CREEK 2-27 GEO TARGET 50' RADIUS (660'FNL & 1980'FEL, REV-1)		6000.00	-198.15	-1144.01	3175211.46	1253497.08	40°01'39.144"N	104°52'27.588"W	circle
DRY CREEK 2-27 LEGAL BOX (200'N,200'S,199'E,201'W OF GEO TARGET)		6000.00	-198.15	-1145.01	3175210.46	1253497.07	40°01'39.144"N	104°52'27.601"W	square

WELLPATH COMPOSITION Ref Wellbore: DRY CREEK 2-27 awb Ref Wellpath: DRY CREEK 2-27 awp				
Start MD [ft]	End MD [ft]	Positional Uncertainty Model	Log Name/Comment	Wellbore
15.00	1130.00	NaviTrak (Standard)	bhi mwd survey 12.25 hole <150-1130>	DRY CREEK 2-27 awb
1130.00	8368.00	NaviTrak (Standard)	bhi mwd surveys 7.875 hole <1221-8368>	DRY CREEK 2-27 awb
8368.00	8418.00	Blind Drilling (std)	Projection to bit	DRY CREEK 2-27 awb



Actual Wellpath Report

DRY CREEK 2-27 awp

Page 5 of 5



INTEQ

REFERENCE WELLPATH IDENTIFICATION

Operator	KERR MCGEE OIL & GAS ONSHORE LP	Slot	SLOT#10 DRY CREEK 2-27 (463'FNL & 835'FEL)
Area	COLORADO	Well	DRY CREEK 2-27
Field	WELD COUNTY (KERR MCGEE)	Wellbore	DRY CREEK 2-27 awb
Facility	SEC.27-T1N-R67W		

WELLPATH COMMENTS

MD [ft]	Inclination [°]	Azimuth [°]	TVD [ft]	Comment
8368.00	0.400	23.400	8206.68	LAST BHI MWD SURVEY
8418.00	0.400	23.400	8256.68	PROJECTION TO BIT