
BILL BARRETT CORPORATION E-BILL

**GGU MILLER FED 33B-32-691
MAMM CREEK
Garfield County , Colorado**

Cement Surface Casing
08-Oct-2010

Post Job Report

The Road to Excellence Starts with Safety

Sold To #: 343492		Ship To #: 2810715		Quote #:		Sales Order #: 7677715	
Customer: BILL BARRETT CORPORATION E-BILL				Customer Rep: South, Jodi			
Well Name: GGU MILLER FED			Well #: 33B-32-691			API/UWI #: 05-045-19421	
Field: MAMM CREEK		City (SAP): SILT		County/Parish: Garfield			State: Colorado
Lat: N 39.478 deg. OR N 39 deg. 28 min. 41 secs.				Long: W 107.579 deg. OR W -108 deg. 25 min. 16.255 secs.			
Contractor: PROPETRO			Rig/Platform Name/Num: PRO PETRO				
Job Purpose: Cement Surface Casing							
Well Type: Development Well			Job Type: Cement Surface Casing				
Sales Person: METLI, MARSHALL			Srvc Supervisor: MUHLESTEIN, RYAN			MBU ID Emp #: 453609	

Job Personnel

HES Emp Name	Exp Hrs	Emp #	HES Emp Name	Exp Hrs	Emp #	HES Emp Name	Exp Hrs	Emp #
BANKS, BRENT A	4	371353	HAYES, DIRK A	4	336768	MUHLESTEIN, RYAN Herrick	4	453609
STILLSON, ERIC W	4	393789						

Equipment

HES Unit #	Distance-1 way	HES Unit #	Distance-1 way	HES Unit #	Distance-1 way	HES Unit #	Distance-1 way
10616651C	120 mile	10856958	120 mile	10867322	120 mile	10951246	120 mile
10995025	120 mile						

Job Hours

Date	On Location Hours	Operating Hours	Date	On Location Hours	Operating Hours	Date	On Location Hours	Operating Hours
10-08-10	4	1						

TOTAL Total is the sum of each column separately

Job

Job Times

Formation Name	Formation Depth (MD)	Top	Bottom	Called Out	Date	Time	Time Zone
Form Type			BHST	On Location	08 - Oct - 2010	09:00	MST
Job depth MD	780. ft		Job Depth TVD	780. ft	08 - Oct - 2010	10:14	MST
Water Depth			Wk Ht Above Floor	4. ft	08 - Oct - 2010	11:02	MST
Perforation Depth (MD)	From		To	Departed Loc			

Well Data

Description	New / Used	Max pressure psig	Size in	ID in	Weight lbm/ft	Thread	Grade	Top MD ft	Bottom MD ft	Top TVD ft	Bottom TVD ft
OPENHOLE SECTION				12.375				.	763.5		
SURFACE CASING	Unknown		9.625	8.921	36.			.	763.5		

Sales/Rental/3rd Party (HES)

Description	Qty	Qty uom	Depth	Supplier
PLUG,CMTG,TOP,9 5/8,HWE,8.16 MIN/9.06 MA	1	EA		
R/A DENSOMETER W/CHART RECORDER,/JOB,ZI	1	JOB		
ADC (AUTO DENSITY CTRL) SYS, /JOB,ZI	1	JOB		
PORT. DATA ACQUIS. W/OPTICEM RT W/HES	1	EA		

Tools and Accessories

Type	Size	Qty	Make	Depth	Type	Size	Qty	Make	Depth	Type	Size	Qty	Make
Guide Shoe					Packer					Top Plug	9.625	1	
Float Shoe					Bridge Plug					Bottom Plug			
Float Collar					Retainer					SSR plug set			
Insert Float										Plug Container	9.625	1	
Stage Tool										Centralizers			

Miscellaneous Materials													
Gelling Agt		Conc		Surfactant		Conc		Acid Type		Qty		Conc	%
Treatment Fld		Conc		Inhibitor		Conc		Sand Type		Size		Qty	
Fluid Data													
Stage/Plug #: 1													
Fluid #	Stage Type	Fluid Name			Qty	Qty uom	Mixing Density lbm/gal	Yield ft3/sk	Mix Fluid Gal/sk	Rate bbl/min	Total Mix Fluid Gal/sk		
1	WATER SPACER				20.00	bbl	8.4	.0	.0	6.0			
2	Lead Cement	VERSACEM (TM) SYSTEM (452010)			120.0	sacks	12.3	2.37	13.76	6.0	13.42		
		13.418 Gal			FRESH WATER								
3	Tail Cement	SWIFTCEM (TM) SYSTEM (452990)			120.0	sacks	14.2	1.43	6.88	6.0	6.72		
		6.715 Gal			FRESH WATER								
4	DISPLACEMENT				56.00	bbl	8.4	.0	.0	6.0			
Calculated Values		Pressures			Volumes								
Displacement	55.6	Shut In: Instant			Lost Returns		0	Cement Slurry		81	Pad		
Top Of Cement	SURFACE	5 Min			Cement Returns		28	Actual Displacement		Treatment			
Frac Gradient		15 Min			Spacers		20	Load and Breakdown		Total Job			
Rates													
Circulating	0	Mixing			6	Displacement		6	Avg. Job		6		
Cement Left In Pipe	Amount	44.4 ft	Reason		Shoe Joint								
Frac Ring # 1 @	ID	Frac ring # 2 @	ID	Frac Ring # 3 @	ID	Frac Ring # 4 @	ID						
The Information Stated Herein Is Correct					Customer Representative Signature								

The Road to Excellence Starts with Safety

Sold To #: 343492	Ship To #: 2810715	Quote #:	Sales Order #: 7677715
Customer: BILL BARRETT CORPORATION E-BILL		Customer Rep: South, Jodi	
Well Name: GGU MILLER FED	Well #: 33B-32-691	API/UWI #: 05-045-19421	
Field: MAMM CREEK	City (SAP): SILT	County/Parish: Garfield	State: Colorado
Legal Description:			
Lat: N 39.478 deg. OR N 39 deg. 28 min. 41 secs.		Long: W 107.579 deg. OR W -108 deg. 25 min. 16.255 secs.	
Contractor: PROPETRO		Rig/Platform Name/Num: PRO PETRO	
Job Purpose: Cement Surface Casing			Ticket Amount:
Well Type: Development Well		Job Type: Cement Surface Casing	
Sales Person: METLI, MARSHALL		Srvc Supervisor: MUHLESTEIN, RYAN	MBU ID Emp #: 453609

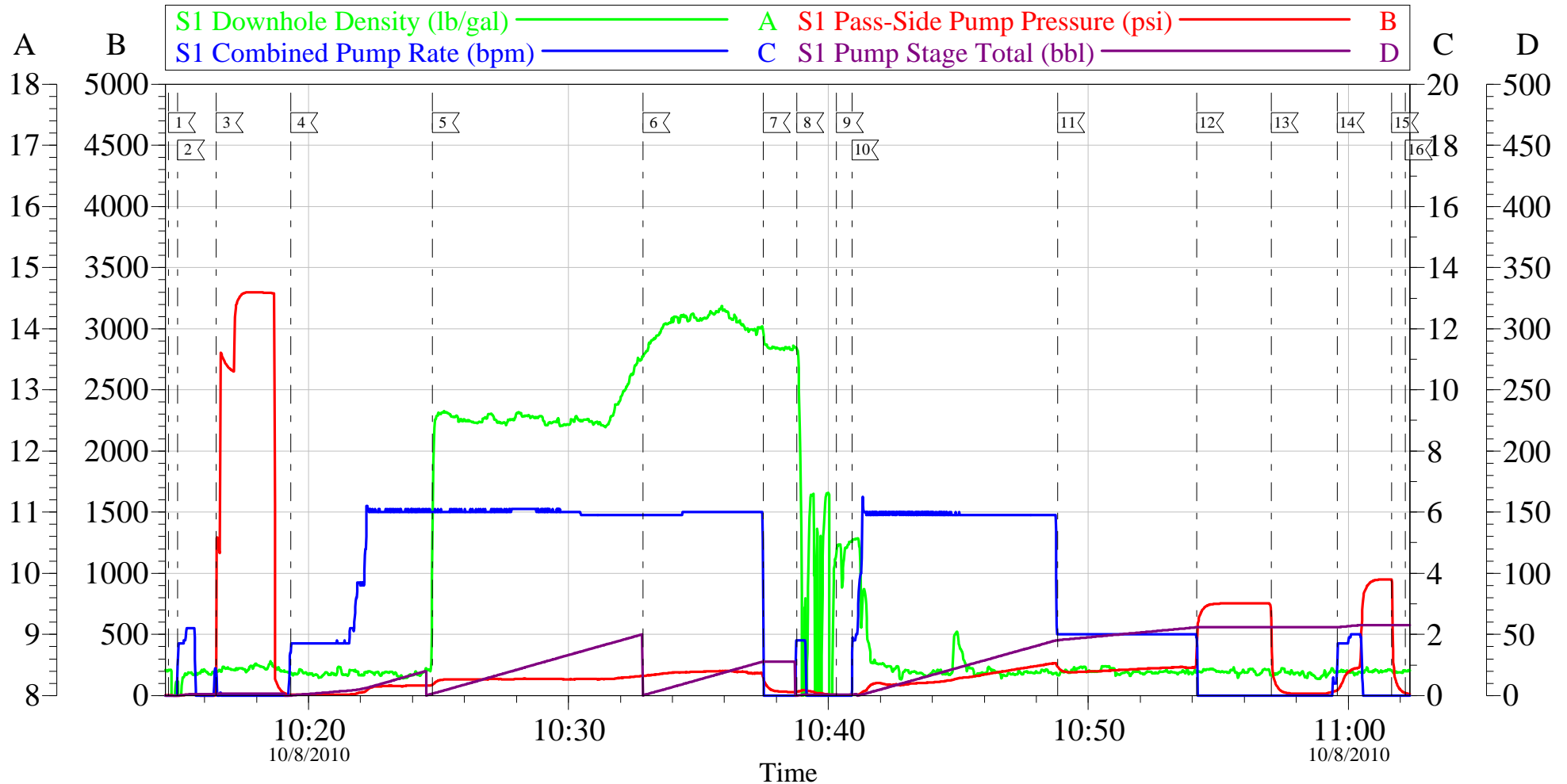
Activity Description	Date/Time	Cht #	Rate bbl/min	Volume bbl		Pressure psig		Comments
				Stage	Total	Tubing	Casing	
Arrive At Loc	10/08/2010 09:00							CEMENT ARRIVED ON LOCATION, REST OF CREW ON LOCATION FROM PREVIOUS JOB.
Assessment Of Location Safety Meeting	10/08/2010 09:05							REVIEWED EMERGENCY PLAN, ASSESSED WORK AREA AND SPOTTED EQUIPMENT.
Pre-Rig Up Safety Meeting	10/08/2010 09:15							ENTIRE CREW, WALKED THROUGH RIG UP LOOKING FOR HAZARDS.
Rig-Up Equipment	10/08/2010 09:30							1 PICK UP, 1 HT400 PUMP TRUCK, 1 660 BULK CEMENT TRUCK, 1 SCREW IN HEAD WITH PLUG,
Pre-Job Safety Meeting	10/08/2010 10:10							ENTIRE CREW AND RIG CREW.
Start Job	10/08/2010 10:14							TD 780 TP 763.53 SJ 44.38 FC 719.15, 9 5/8 36# CASING IN 12 3/8 AIR DRILLED HOLE.
Pump Water	10/08/2010 10:14		2	1			18.0	FILL LINES BEFORE TESTING
Pressure Test	10/08/2010 10:16		0.5	0.1			3310.0	HELD PRESSURE FOR 2 MIN, PRESSURE HELD, NO LEAKS.

Activity Description	Date/Time	Cht #	Rate bbl/min	Volume bbl		Pressure psig		Comments
				Stage	Total	Tubing	Casing	
Pump Spacer 1	10/08/2010 10:19		6	20			78.0	FRESH WATER, PUMPED AT 2 BPM UNTIL CEMENT TUB UP TO WEIGHT AND WEIGHED WITH SCALES, SPED RATE TO 5 BPM AT 6 BBLS GONE.
Pump Lead Cement	10/08/2010 10:24		6	51			134.0	120 SKS VERSACEM, 12.3 PPG, 2.38 CUFT/SK, 13.77 GAL/SK.
Pump Tail Cement	10/08/2010 10:32		6	30			181.0	120 SKS SWIFTCM, 14.2 PPG, 1.43 CUFT/SK, 6.85 GAL/SK.
Shutdown	10/08/2010 10:37							
Drop Top Plug	10/08/2010 10:38							PLUG DID NOT LEAVE CONTAINER. TOOK TOP CAP OFF AND PUSHED PLUG DOWN.
Pump Displacement	10/08/2010 10:40		6	55.6			300.0	FRESH WATER, CEMENT TO SURFACE AT 31 BBLS GONE, 25 BBLS OF CEMENT TO SURFACE. DID NOT USE ANY SUGAR.
Slow Rate	10/08/2010 10:48		2	46			259.0	SLOWED RATE TO 2 BPM TO BUMP PLUG.
Bump Plug	10/08/2010 10:54		2	55.6			756.0	PLUG LANDED AT 259 PSI, BUMPED UP TO 756 PSI AND HELD FOR 2 MIN.
Check Floats	10/08/2010 10:57							FLOATS DID NOT HOLD, WHEN RELEASED PRESSURE GOT 2 BBL OF WATER BACK TO TRUCK.
Bump Plug	10/08/2010 10:59		2	2			900.0	RE BUMPED PLUG UP TO 900 PSI
Check Floats	10/08/2010 11:01							FLOATS HELD THIS TIME, WHEN RELEASED PRESSURE 1/2 BBL OF WATER BACK TO TRUCK.

Activity Description	Date/Time	Cht #	Rate bbl/ min	Volume bbl		Pressure psig		Comments
				Stage	Total	Tubing	Casing	
End Job	10/08/2010 11:02							RETURNS TO SURFACE AT 7 BBLS GONE ON DISPLACEMENT GOOD RETURNS REMAINDER, DID NOT RECIPROCATATE PIPE.
Post-Job Safety Meeting (Pre Rig-Down)	10/08/2010 11:05							ENTIRE CREW
Rig-Down Equipment	10/08/2010 12:00							
Other	10/08/2010 12:05							CREW WILL STAY ON LOCATION FOR NEXT JOB.

BILL BARRETT

9 5/8 SURFACE



Local Event Log								
1	START JOB	10:14:37	2	FILL LINES	10:14:58	3	TEST LINES	10:16:26
4	PUMP H2O SPACER	10:19:19	5	PUMP LEAD CEMENT	10:24:46	6	PUMP TAIL CEMENT	10:32:52
7	SHUTDOWN	10:37:30	8	PLUG DID NOT DROP	10:38:47	9	DROP PLUG	10:40:19
10	PUMP DISPLACEMENT	10:40:54	11	SLOW RATE	10:48:50	12	BUMP PLUG	10:54:10
13	CHECK FLOATS	10:57:02	14	REBUMP PLUG	10:59:35	15	CHECK FLOATS	11:01:40
16	END JOB	11:02:12						

Customer: BILL BARRETT
Well Description: GGU MILLER FED 33B-32-691
Company Rep: JODY SOUTH

Job Date: 08-Oct-2010
Job Type: SURFACE
Cement Supervisor: RYAN MUHLESTEIN

Sales Order #: 7677715
ADC Used: YES
Elite #: 4 BRENT BANKS

OptiCem v6.4.2
08-Oct-10 11:10