
BILL BARRETT CORPORATION E-BILL

**GGU MILLER 23C-32-691
MAMM CREEK
Garfield County , Colorado**

Cement Surface Casing
09-Oct-2010

Post Job Report

The Road to Excellence Starts with Safety

Sold To #: 343492		Ship To #: 2810658		Quote #:		Sales Order #: 7674781	
Customer: BILL BARRETT CORPORATION E-BILL				Customer Rep: South, Jodi			
Well Name: GGU MILLER			Well #: 23C-32-691		API/UWI #: 05-045-10421		
Field: MAMM CREEK		City (SAP): SILT		County/Parish: Garfield		State: Colorado	
Lat: N 39.483 deg. OR N 39 deg. 28 min. 59.848 secs.				Long: W 107.582 deg. OR W -108 deg. 25 min. 3.144 secs.			
Contractor: BARRETT			Rig/Platform Name/Num: PETRO PLUS				
Job Purpose: Cement Surface Casing							
Well Type: Development Well				Job Type: Cement Surface Casing			
Sales Person: METLI, MARSHALL			Srvc Supervisor: MUHLESTEIN, RYAN		MBU ID Emp #: 453609		
Job Personnel							
HES Emp Name	Exp Hrs	Emp #	HES Emp Name	Exp Hrs	Emp #	HES Emp Name	Exp Hrs
BANKS, BRENT A	4	371353	MUHLESTEIN, RYAN Herrick	4	453609	STILLSON, ERIC W	4
Equipment							
HES Unit #	Distance-1 way	HES Unit #	Distance-1 way	HES Unit #	Distance-1 way	HES Unit #	Distance-1 way
10616651C	120 mile	10867304	120 mile	10951246	120 mile	10995025	120 mile
10998054	120 mile						
Job Hours							
Date	On Location Hours	Operating Hours	Date	On Location Hours	Operating Hours	Date	On Location Hours
10/09/2010	2	1					
TOTAL			<i>Total is the sum of each column separately</i>				
Job				Job Times			
Formation Name					Date	Time	Time Zone
Formation Depth (MD)	Top		Bottom		Called Out		
Form Type	BHST				On Location		
Job depth MD	764.8 ft		Job Depth TVD	764.8 ft	Job Started	09 - Oct - 2010	01:47
Water Depth			Wk Ht Above Floor	4. ft	Job Completed	09 - Oct - 2010	02:29
Perforation Depth (MD)	From		To		Departed Loc	09 - Oct - 2010	03:30
Well Data							
Description	New / Used	Max pressure psig	Size in	ID in	Weight lbm/ft	Thread	Grade
							Top MD ft
							Bottom MD ft
							Top TVD ft
							Bottom TVD ft
Sales/Rental/3rd Party (HES)							
Description					Qty	Qty uom	Depth
PLUG,CMTG,TOP,9 5/8,HWE,8.16 MIN/9.06 MA					1	EA	
R/A DENSOMETER W/CHART RECORDER,/JOB,ZI					1	JOB	
PORT. DATA ACQUIS. W/OPTICEM RT W/HES					1	EA	
ADC (AUTO DENSITY CTRL) SYS, /JOB,ZI					1	JOB	
Tools and Accessories							
Type	Size	Qty	Make	Depth	Type	Size	Qty
Guide Shoe					Packer		
Float Shoe					Bridge Plug		
Float Collar					Retainer		
Insert Float							
Stage Tool							
Miscellaneous Materials							
Gelling Agt		Conc		Surfactant		Conc	
Treatment Fld		Conc		Inhibitor		Conc	
					Acid Type		Qty
					Sand Type		Size
							Conc
							%

Fluid Data									
Stage/Plug #: 1									
Fluid #	Stage Type	Fluid Name	Qty	Qty uom	Mixing Density lbm/gal	Yield ft ³ /sk	Mix Fluid Gal/sk	Rate bbl/min	Total Mix Fluid Gal/sk
1	WATER SPACER		20.00	bbl	8.33	.0	.0	6.0	
2	Lead Cement	VERSACEM (TM) SYSTEM (452010)	120.0	sacks	12.3	2.37	13.76	6.0	13.42
	13.418 Gal	FRESH WATER							
3	Tail Cement	SWIFTCEM (TM) SYSTEM (452990)	120.0	sacks	14.2	1.43	6.88	6.0	6.72
	6.715 Gal	FRESH WATER							
4	DISPLACEMENT		56.00	bbl	8.33	.0	.0	6.0	
Calculated Values		Pressures		Volumes					
Displacement	55.7	Shut In: Instant		Lost Returns	0	Cement Slurry	81	Pad	
Top Of Cement		5 Min		Cement Returns	25	Actual Displacement	55.7	Treatment	
Frac Gradient		15 Min		Spacers	20	Load and Breakdown		Total Job	
Rates									
Circulating	0	Mixing	6	Displacement	6	Avg. Job	6		
Cement Left In Pipe	Amount	44.35 ft	Reason	Shoe Joint					
Frac Ring # 1 @	ID	Frac ring # 2 @	ID	Frac Ring # 3 @	ID	Frac Ring # 4 @	ID		
The Information Stated Herein Is Correct				Customer Representative Signature					

The Road to Excellence Starts with Safety

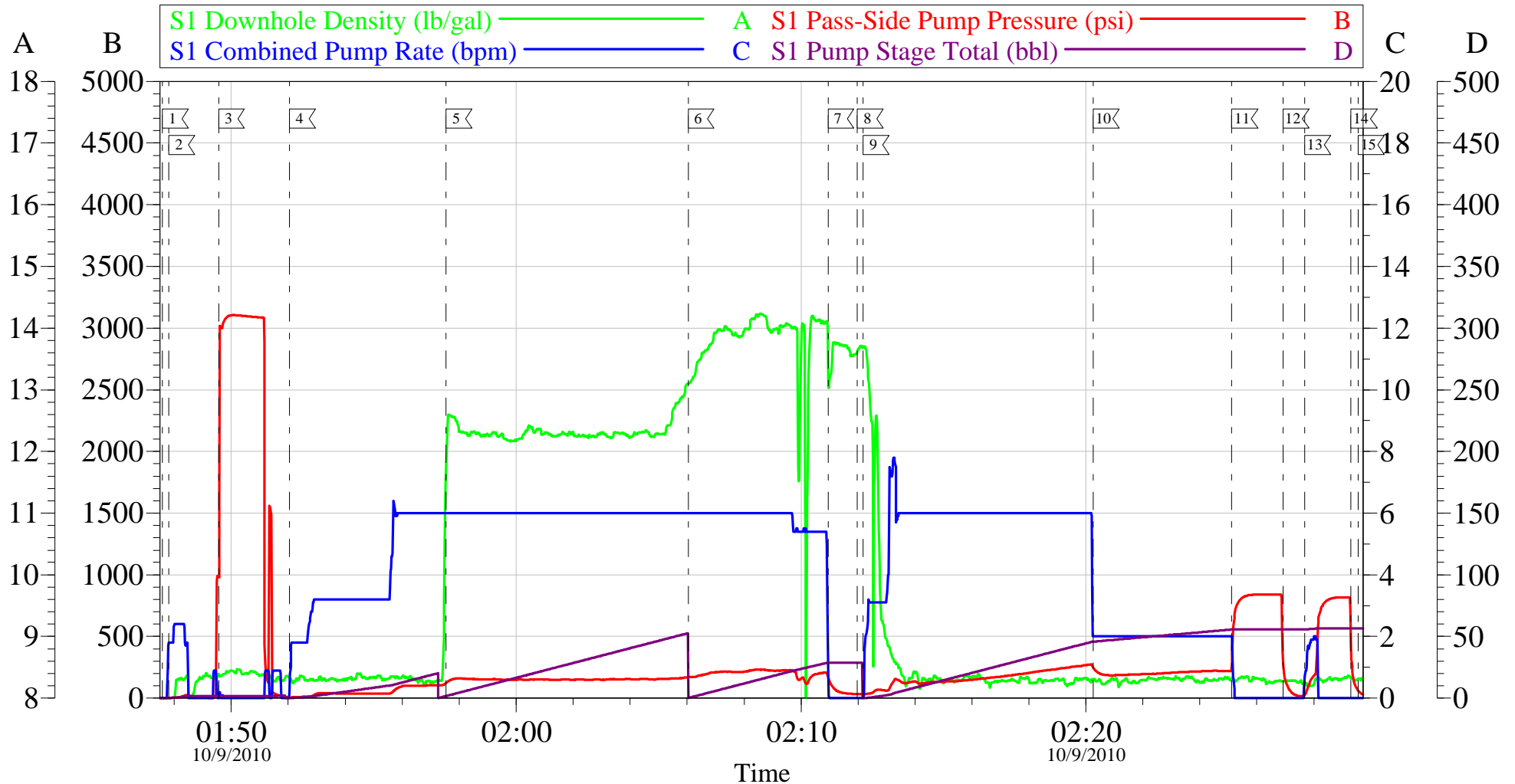
Sold To #: 343492	Ship To #: 2810658	Quote #:	Sales Order #: 7674781
Customer: BILL BARRETT CORPORATION E-BILL		Customer Rep: South, Jodi	
Well Name: GGU MILLER		Well #: 23C-32-691	API/UWI #: 05-045-10421
Field: MAMM CREEK	City (SAP): SILT	County/Parish: Garfield	State: Colorado
Legal Description:			
Lat: N 39.483 deg. OR N 39 deg. 28 min. 59.848 secs.		Long: W 107.582 deg. OR W -108 deg. 25 min. 3.144 secs.	
Contractor: BARRETT		Rig/Platform Name/Num: PETRO PLUS	
Job Purpose: Cement Surface Casing			Ticket Amount:
Well Type: Development Well		Job Type: Cement Surface Casing	
Sales Person: METLI, MARSHALL		Srv Supervisor: MUHLESTEIN, RYAN	MBU ID Emp #: 453609

Activity Description	Date/Time	Cht #	Rate bbl/min	Volume bbl		Pressure psig		Comments
				Stage	Total	Tubing	Casing	
Arrive at Location from Service Center	10/08/2010 21:00							CREW ON LOCATION FROM PREVIOUS JOB, CEMENT FOR JOB ARRIVES.
Assessment Of Location Safety Meeting	10/08/2010 21:30							WITH ALL HES PERSONNEL
Other	10/08/2010 21:36							SPOT EQUIPMENT
Rig-Up Equipment	10/09/2010 01:00							1 HT 400 PUMP, 1 660 BULK TRAILER, 1 F-450 PICK-UP, 1 PLUG CONTAINER
Pre-Job Safety Meeting	10/09/2010 01:40							WITH ALL PERSONNEL ON LOCATION
Start Job	10/09/2010 01:47							TD 785', TP 764.89', SJ 44.35', FC 720.54, 9 5/8" 36# CASING, 12 3/8" AIR DRILLED HOLE
Pump Water	10/09/2010 01:47		2	1			25.0	FILL LINES
Test Lines	10/09/2010 01:49						3105.0	HELD PRESSURE FOR 2 MIN, NO LEAKS
Pump Spacer 1	10/09/2010 01:52		6	20			106.0	PUMP FRESH WATER AT 2 BPM UNTIL TUB WEIGHED UP, THEN INCREASED RATE TO 6 BPM, AT 12 BBLS AWAY
Pump Lead Cement	10/09/2010 01:57		6	51			170.0	120 SKS, 12.3 PPG, 2.38 FT3/SK, 13.77 GAL/SK
Pump Tail Cement	10/09/2010 02:06		6	28.7			235.0	120 SKS, 14.2 PPG, 1.43 FT3/SK, 6.85 GAL/SK
Shutdown	10/09/2010 02:10							

Activity Description	Date/Time	Cht #	Rate bbl/min	Volume bbl		Pressure psig		Comments
				Stage	Total	Tubing	Casing	
Drop Top Plug	10/09/2010 02:11							LAUNCH PLUG, VERIFY PLUG LEFT CONTAINER
Pump Displacement	10/09/2010 02:12		6	55.7			255.0	FRESH WATER, CEMENT RETURNS TO SURFACE AT 33 BBLS AWAY ON DISPLACEMENT, 25 BBLS CEMENT TO SURFACE, NO SUGAR USED.
Slow Rate	10/09/2010 02:20		2	45.7			230.0	SLOW RATE 10 BBLS PRIOR TO CALCULATED DISPLACEMENT
Bump Plug	10/09/2010 02:25			55.7			837.0	PLUG BUMPED PLUG AT 230 PSI, PRESSURED UP TO 837
Check Floats	10/09/2010 02:26							FLOATS DID NOT HOLD FULLY, THERE WAS A STEADY TRICKLE COMING BACK.
Bump Plug	10/09/2010 02:27		2	1			845.0	RE BUMP PLUG TO 845 PSI
Check Floats	10/09/2010 02:29							FLOAT HELD 1 BBL BACK TO TRUCK
End Job	10/09/2010 02:30							
Pre-Rig Down Safety Meeting	10/09/2010 02:35							WITH ALL HES PERSONNEL
Rig-Down Equipment	10/09/2010 03:00							
Other	10/09/2010 03:05							WITH ALL HES PERSONNEL
Comment	10/09/2010 03:10							THANK YOU FOR USING HALLIBURTON CEMENT DEPARTMENT. RYAN MUHLESTEIN AND CREW
Pre-Rig Up Safety Meeting	10/09/2010 12:55							WITH ALL HES PERSONNEL

BILL BARRETT

9 5/8 SURFACE



Customer: BILL BARRETT
 Well Description: GGU MILLER FED 23C-32-691
 Company Rep: JODY SOUTH

Job Date: 09-Oct-2010
 Job Type: SURFACE
 Cement Supervisor: ERIC STILLSON

Sales Order #: 7674781
 ADC Used: YES
 Elite #: 4 BRENT BANKS

OptiCem v6.4.2
 09-Oct-10 02:49