

---

# **BILL BARRETT CORPORATION E-BILL**

---

**GGU MILLER 23B-32-691  
MAMM CREEK  
Garfield County , Colorado**

**Cement Surface Casing**  
**09-Oct-2010**

**Post Job Report**

## The Road to Excellence Starts with Safety

<b>Sold To #:</b> 343492	<b>Ship To #:</b> 2810657	<b>Quote #:</b>	<b>Sales Order #:</b> 7675845
<b>Customer:</b> BILL BARRETT CORPORATION E-BILL		<b>Customer Rep:</b> South, Jody	
<b>Well Name:</b> GGU MILLER		<b>Well #:</b> 23B-32-691	<b>API/UWI #:</b> 05-045-194247
<b>Field:</b> MAMM CREEK	<b>City (SAP):</b> SILT	<b>County/Parish:</b> Garfield	<b>State:</b> Colorado
<b>Lat:</b> N 39.478 deg. OR N 39 deg. 28 min. 40.969 secs.		<b>Long:</b> W 107.579 deg. OR W -108 deg. 25 min. 16.151 secs.	
<b>Contractor:</b> BARRETT		<b>Rig/Platform Name/Num:</b> PETRO PLUS	
<b>Job Purpose:</b> Cement Surface Casing			
<b>Well Type:</b> Development Well		<b>Job Type:</b> Cement Surface Casing	
<b>Sales Person:</b> METLI, MARSHALL		<b>Srvc Supervisor:</b> MUHLESTEIN, RYAN	<b>MBU ID Emp #:</b> 453609

### Job Personnel

HES Emp Name	Exp Hrs	Emp #	HES Emp Name	Exp Hrs	Emp #	HES Emp Name	Exp Hrs	Emp #
DOUT, JACOB J	4	430298	HUGENTOBLE, LOGAN Mark	4	447333	MUHLESTEIN, RYAN Herrick	4	453609

### Equipment

HES Unit #	Distance-1 way	HES Unit #	Distance-1 way	HES Unit #	Distance-1 way	HES Unit #	Distance-1 way
10616651C	120 mile	10951246	120 mile	10995025	120 mile		

### Job Hours

Date	On Location Hours	Operating Hours	Date	On Location Hours	Operating Hours	Date	On Location Hours	Operating Hours
10/09/2010	4	1						

**TOTAL** Total is the sum of each column separately

### Job

Formation Name	Job	Job Times
<b>Formation Depth (MD)</b> <b>Top</b> <b>Bottom</b>	<b>Called Out</b>	<b>Date</b> <b>Time</b> <b>Time Zone</b>
<b>Form Type</b> <b>BHST</b>	<b>On Location</b>	
<b>Job depth MD</b> 762.3 ft	<b>Job Depth TVD</b> 762.3 ft	<b>Job Started</b> 09 - Oct - 2010 00:00 MST
<b>Water Depth</b>	<b>Wk Ht Above Floor</b> 4. ft	<b>Job Completed</b> 09 - Oct - 2010 00:00 MST
<b>Perforation Depth (MD)</b> <b>From</b> <b>To</b>	<b>Departed Loc</b>	

### Well Data

Description	New / Used	Max pressure psig	Size in	ID in	Weight lbm/ft	Thread	Grade	Top MD ft	Bottom MD ft	Top TVD ft	Bottom TVD ft
-------------	------------	-------------------	---------	-------	---------------	--------	-------	-----------	--------------	------------	---------------

### Sales/Rental/3<sup>rd</sup> Party (HES)

Description	Qty	Qty uom	Depth	Supplier
PLUG,CMTG,TOP,9 5/8,HWE,8.16 MIN/9.06 MA	1	EA		
R/A DENSOMETER W/CHART RECORDER,/JOB,ZI	1	JOB		
PORT. DATA ACQUIS. W/OPTICEM RT W/HES	1	EA		
ADC (AUTO DENSITY CTRL) SYS, /JOB,ZI	1	JOB		

### Tools and Accessories

Type	Size	Qty	Make	Depth	Type	Size	Qty	Make	Depth	Type	Size	Qty	Make
Guide Shoe					Packer					Top Plug	9.625	1	HES
Float Shoe					Bridge Plug					Bottom Plug			
Float Collar					Retainer					SSR plug set			
Insert Float										Plug Container	9.625	1	HES
Stage Tool										Centralizers			

### Miscellaneous Materials

Gelling Agt	Conc	Surfactant	Conc	Acid Type	Qty	Conc	%
Treatment Fld	Conc	Inhibitor	Conc	Sand Type	Size	Qty	

Fluid Data									
Stage/Plug #: 1									
Fluid #	Stage Type	Fluid Name	Qty	Qty uom	Mixing Density lbm/gal	Yield ft <sup>3</sup> /sk	Mix Fluid Gal/sk	Rate bbl/min	Total Mix Fluid Gal/sk
1	WATER SPACER		20.00	bbl	8.4	.0	.0	5.0	
2	Lead Cement	VERSACEM (TM) SYSTEM (452010)	120.0	sacks	12.3	2.37	13.76	5.0	13.42
	13.418 Gal	FRESH WATER							
3	Tail Cement	SWIFTCEM (TM) SYSTEM (452990)	120.0	sacks	14.2	1.43	6.88	5.0	6.72
	6.715 Gal	FRESH WATER							
4	DISPLACEMENT		56.00	bbl	8.4	.0	.0	5.0	
Calculated Values		Pressures		Volumes					
Displacement	56	Shut In: Instant		Lost Returns	0	Cement Slurry	81	Pad	
Top Of Cement	0	5 Min		Cement Returns	25	Actual Displacement	55.5	Treatment	
Frac Gradient		15 Min		Spacers	20	Load and Breakdown		Total Job	
Rates									
Circulating	0	Mixing	5	Displacement	5	Avg. Job	5		
Cement Left In Pipe	Amount	44.39 ft	Reason	Shoe Joint					
Frac Ring # 1 @	ID	Frac ring # 2 @	ID	Frac Ring # 3 @	ID	Frac Ring # 4 @	ID		
The Information Stated Herein Is Correct				Customer Representative Signature					

*The Road to Excellence Starts with Safety*

<b>Sold To #:</b> 343492	<b>Ship To #:</b> 2810657	<b>Quote #:</b>	<b>Sales Order #:</b> 7675845
<b>Customer:</b> BILL BARRETT CORPORATION E-BILL		<b>Customer Rep:</b> South, Jody	
<b>Well Name:</b> GGU MILLER	<b>Well #:</b> 23B-32-691	<b>API/UWI #:</b> 05-045-194247	
<b>Field:</b> MAMM CREEK	<b>City (SAP):</b> SILT	<b>County/Parish:</b> Garfield	<b>State:</b> Colorado
<b>Legal Description:</b>			
<b>Lat:</b> N 39.478 deg. OR N 39 deg. 28 min. 40.969 secs.		<b>Long:</b> W 107.579 deg. OR W -108 deg. 25 min. 16.151 secs.	
<b>Contractor:</b> BARRETT		<b>Rig/Platform Name/Num:</b> PETRO PLUS	
<b>Job Purpose:</b> Cement Surface Casing			<b>Ticket Amount:</b>
<b>Well Type:</b> Development Well		<b>Job Type:</b> Cement Surface Casing	
<b>Sales Person:</b> METLI, MARSHALL		<b>Srv Supervisor:</b> MUHLESTEIN, RYAN	<b>MBU ID Emp #:</b> 453609

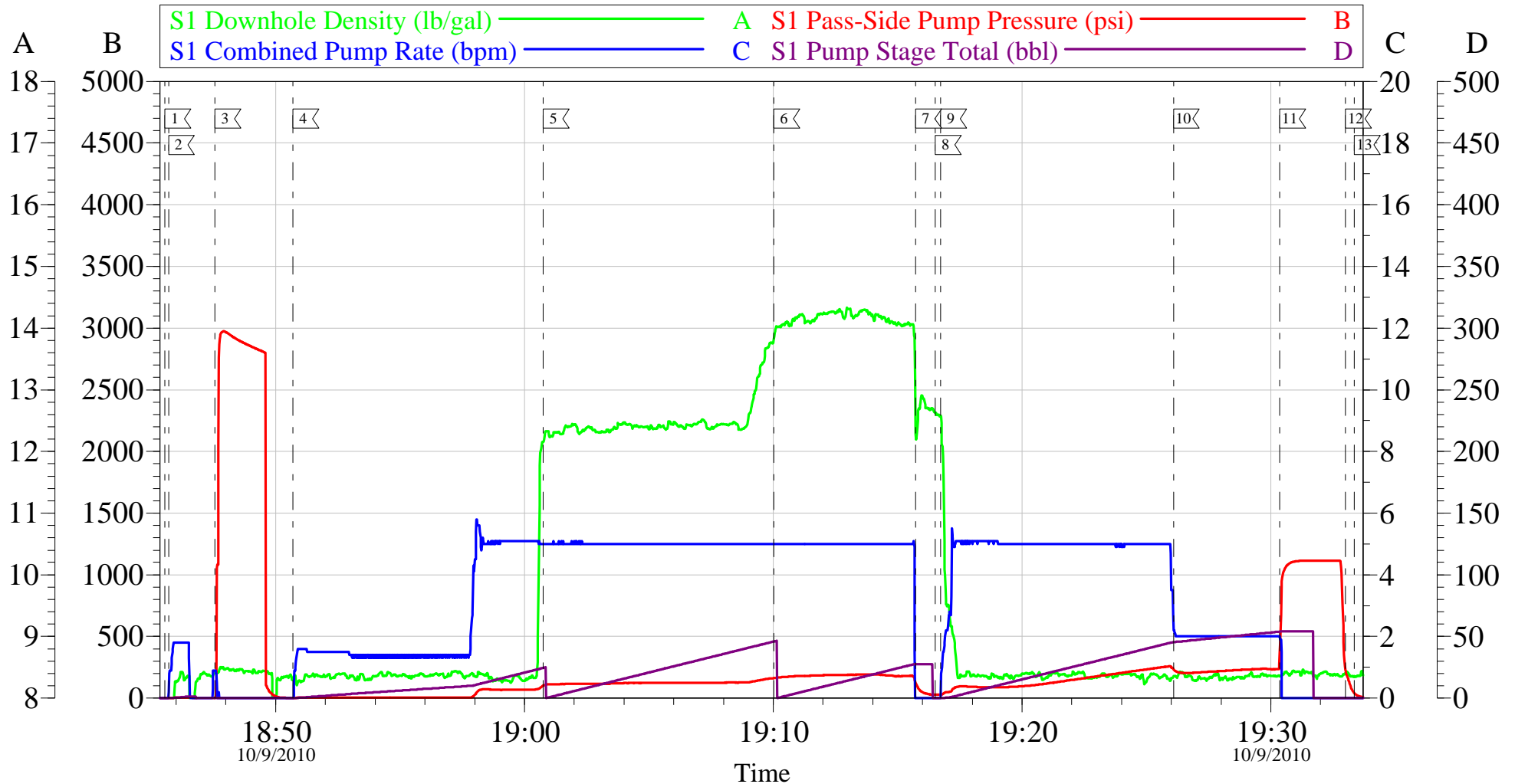
Activity Description	Date/Time	Cht #	Rate bbl/min	Volume bbl		Pressure psig		Comments
				Stage	Total	Tubing	Casing	
Arrive At Loc	10/09/2010 16:45							CEMENT ARRIVED ON LOCATION, REST OF CREW ON LOCATION FROM PREVIOUS JOB.
Assessment Of Location Safety Meeting	10/09/2010 17:00							REVIEWED EMERGENCY PLAN, ASSESSED WORK AREA AND SPOTTED EQUIPMENT.
Pre-Rig Up Safety Meeting	10/09/2010 17:15							ENTIRE CREW, WALKED THROUGH RIG UP LOOKING FOR HAZARDS.
Rig-Up Equipment	10/09/2010 17:30							1 PICK UP, 1 HT400 PUMP TRUCK, 1 660 BULK CEMENT TRUCK, 1 SCREW IN PLUG CONTAINER WITH PLUG
Pre-Job Safety Meeting	10/09/2010 18:30							ENTIRE CREW AND RIG CREW.
Start Job	10/09/2010 18:45							TD 785' TP 762.34 SJ 44.39 FC 717.95, 9 5/8 36# CASING IN 12 3/8 HOLE. AIR DRILLED HOLE.
Pump Water	10/09/2010 18:45		2	1			7.0	FILL LINES BEFORE TESTING
Pressure Test	10/09/2010 18:47							HELD PRESSURE FOR 2 MIN, PRESSURE HELD, NO LEAKS.

Activity Description	Date/Time	Cht #	Rate bbl/min	Volume bbl		Pressure psig		Comments
				Stage	Total	Tubing	Casing	
Pump Spacer 1	10/09/2010 18:50		5	20			106.0	FRESH WATER, PUMPED AT 1.5 BPM UNTIL CEMENT TUB UP TO WEIGHT AND WEIGHED WITH PRESSURIZED MUD SCALES, INCREASED RATE TO 5 BPM AT 12 BBLS GONE.
Pump Lead Cement	10/09/2010 19:00		5	51			160.0	120 SKS VERSACEM, 12.3 PPG, 2.38 CUFT/SK, 13.77 GAL/SK.
Pump Tail Cement	10/09/2010 19:10		5	30			184.0	120 SKS VERSACEM, 14.2 PPG, 1.43 CUFT/SK, 6.85 GAL/SK.
Shutdown	10/09/2010 19:15							
Drop Top Plug	10/09/2010 19:16							VARIFIED PLUG LEFT CONTAINER.
Pump Displacement	10/09/2010 19:16		5	55.5			250.0	FRESH WATER DISPLACEMENT, CEMENT TO SURFACE AT 30 BBLS GONE, 25 BBLS OF CEMENT TO SURFACE. DID NOT USE ANY SUGAR.
Slow Rate	10/09/2010 19:26		2	45			236.0	SLOWED RATE TO 2 BPM TO BUMP PLUG.
Bump Plug	10/09/2010 19:30		2	55.5			1084.0	PLUG LANDED AT 236 PSI, BUMPED UP TO 1084PSI AND HELD FOR 2 MIN.
Check Floats	10/09/2010 19:33							FLOATS HELD, WHEN RELEASED PRESSURE GOT 1 BBL OF WATER BACK TO TRUCK.
End Job	10/09/2010 19:33							RETURNS TO SURFACE AT 11.4 BBLS GONE ON TAIL CMENT GOOD RETURNS REMAINDER, DID NOT RECIPROCATATE PIPE.
Post-Job Safety Meeting (Pre Rig-Down)	10/09/2010 19:40							ENTIRE CREW

Activity Description	Date/Time	Cht #	Rate bbl/ min	Volume bbl		Pressure psig		Comments
				Stage	Total	Tubing	Casing	
Rig-Down Equipment	10/09/2010 19:50							
Other	10/09/2010 19:51							CREW WILL STAY ON LOCATION FOR NEXT JOB.
Comment	10/09/2010 19:51							THANK YOU FOR USING HALLIBURTON, RYAN MUHLESTEIN AND CREW

# BILL BARRETT CORP

## 9 5/8" SURFACE



Local Event Log					
1	START JOB	18:45:33	2	FILL LINES	18:45:42
3	TEST LINES	18:47:33	4	PUMP H2O SPACER	18:50:42
5	PUMP LEAD CEMENT	19:00:46	6	PUMP TAIL CEMENT	19:10:01
7	SHUT DOWN	19:15:43	8	DROP PLUG	19:16:31
9	PUMP DISPLACEMENT	19:16:44	10	SLOW RATE	19:26:05
11	BUMP PLUG	19:30:21	12	CHECK FLOATS	19:33:00
13	END JOB	19:33:21			

Customer: BILL BARRETT  
Well Description: GGU MILLER FED 23B-32-691  
Company Rep: JODY SOUTH

Job Date: 09-Oct-2010  
Job Type: SURFACE  
Cement Supervisor: RYAN MUHLESTEIN

Sales Order #: 7675845  
ADC Used: YES  
Elite #: 4 LOGAN HUGENTOBLE

OptiCem v6.4.2  
09-Oct-10 19:45