
BILL BARRETT CORPORATION E-BILL

**GGU MILLER FED 34B-32-691D
MAMM CREEK
Garfield County , Colorado**

Cement Surface Casing
05-Oct-2010

Post Job Report

The Road to Excellence Starts with Safety

Sold To #: 343492	Ship To #: 2810719	Quote #:	Sales Order #: 7676089
Customer: BILL BARRETT CORPORATION E-BILL	Customer Rep: South, Jody		
Well Name: GGU MILLER FED	Well #: 34B-32-691D	API/UWI #: 05-045-19420	
Field: MAMM CREEK	City (SAP): SILT	County/Parish: Garfield	State: Colorado
Lat: N 39.48 deg. OR N 39 deg. 28 min. 49.512 secs.	Long: W 107.579 deg. OR W -108 deg. 25 min. 16.223 secs.		
Contractor: Pro Petro	Rig/Platform Name/Num: Pro Petro		
Job Purpose: Cement Surface Casing			
Well Type: Development Well	Job Type: Cement Surface Casing		
Sales Person: METLI, MARSHALL	Srv Supervisor: FEUERBORN, JOHN	MBU ID Emp #: 381677	

Job Personnel

HES Emp Name	Exp Hrs	Emp #	HES Emp Name	Exp Hrs	Emp #	HES Emp Name	Exp Hrs	Emp #
BRUN, JUSTIN M	4	459269	FEUERBORN, JOHN William	4	381677	NELSON, RYAN Cody	4	386514

Equipment

HES Unit #	Distance-1 way	HES Unit #	Distance-1 way	HES Unit #	Distance-1 way	HES Unit #	Distance-1 way
10567589C	120 mile	10713212	120 mile	10741123	120 mile	10951246	120 mile
10995027	120 mile						

Job Hours

Date	On Location Hours	Operating Hours	Date	On Location Hours	Operating Hours	Date	On Location Hours	Operating Hours
10-5-10	4	1						

TOTAL Total is the sum of each column separately

Job

Formation Name					Job Times			
Formation Depth (MD)		Top	Bottom		Called Out	Date	Time	Time Zone
Form Type		BHST			On Location			
Job depth MD		780. ft		Job Depth TVD		780. ft	Job Started	05 - Oct - 2010 12:37 CST
Water Depth		Wk Ht Above Floor			2. ft	Job Completed	05 - Oct - 2010 13:16 CST	
Perforation Depth (MD)		From	To		Departed Loc			

Well Data

Description	New / Used	Max pressure psig	Size in	ID in	Weight lbm/ft	Thread	Grade	Top MD ft	Bottom MD ft	Top TVD ft	Bottom TVD ft
-------------	------------	-------------------	---------	-------	---------------	--------	-------	-----------	--------------	------------	---------------

Sales/Rental/3rd Party (HES)

Description	Qty	Qty uom	Depth	Supplier
PLUG,CMTG,TOP,9 5/8,HWE,8.16 MIN/9.06 MA	1	EA		
R/A DENSOMETER W/CHART RECORDER,/JOB,ZI	1	JOB		
ADC (AUTO DENSITY CTRL) SYS, /JOB,ZI	1	JOB		
PORT. DATA ACQUIS. W/OPTICEM RT W/HES	1	EA		

Tools and Accessories

Type	Size	Qty	Make	Depth	Type	Size	Qty	Make	Depth	Type	Size	Qty	Make
Guide Shoe					Packer					Top Plug	9.625	1	
Float Shoe					Bridge Plug					Bottom Plug			
Float Collar					Retainer					SSR plug set			
Insert Float										Plug Container	9.625	1	
Stage Tool										Centralizers			

Miscellaneous Materials

Gelling Agt	Conc	Surfactant	Conc	Acid Type	Qty	Conc	%
Treatment Fld	Conc	Inhibitor	Conc	Sand Type	Size	Qty	

Fluid Data										
Stage/Plug #: 1										
Fluid #	Stage Type	Fluid Name	Qty	Qty uom	Mixing Density lbm/gal	Yield ft ³ /sk	Mix Fluid Gal/sk	Rate bbl/min	Total Mix Fluid Gal/sk	
1	Water Spacer		20	bbl	.	.0	.0	.0		
2	VersaCem Lead Slurry	VERSACEM (TM) SYSTEM (452010)	120	sacks	12.3	2.38	13.77		13.77	
	13.77 Gal	FRESH WATER								
3	SwiftCem Tail Slurry	SWIFTCES (TM) SYSTEM (452990)	120	sacks	14.2	1.43	6.85		6.85	
	6.85 Gal	FRESH WATER								
4	Displacement		56	bbl	.	.0	.0	.0		
Calculated Values		Pressures		Volumes						
Displacement	56	Shut In: Instant		Lost Returns		Cement Slurry	81	Pad		
Top Of Cement	0	5 Min		Cement Returns	28	Actual Displacement	56	Treatment		
Frac Gradient		15 Min		Spacers	20	Load and Breakdown		Total Job		
Rates										
Circulating		Mixing	5	Displacement	6	Avg. Job	5			
Cement Left In Pipe	Amount	0 ft	Reason	Shoe Joint						
Frac Ring # 1 @	ID	Frac ring # 2 @	ID	Frac Ring # 3 @	ID	Frac Ring # 4 @	ID			
The Information Stated Herein Is Correct				Customer Representative Signature						

The Road to Excellence Starts with Safety

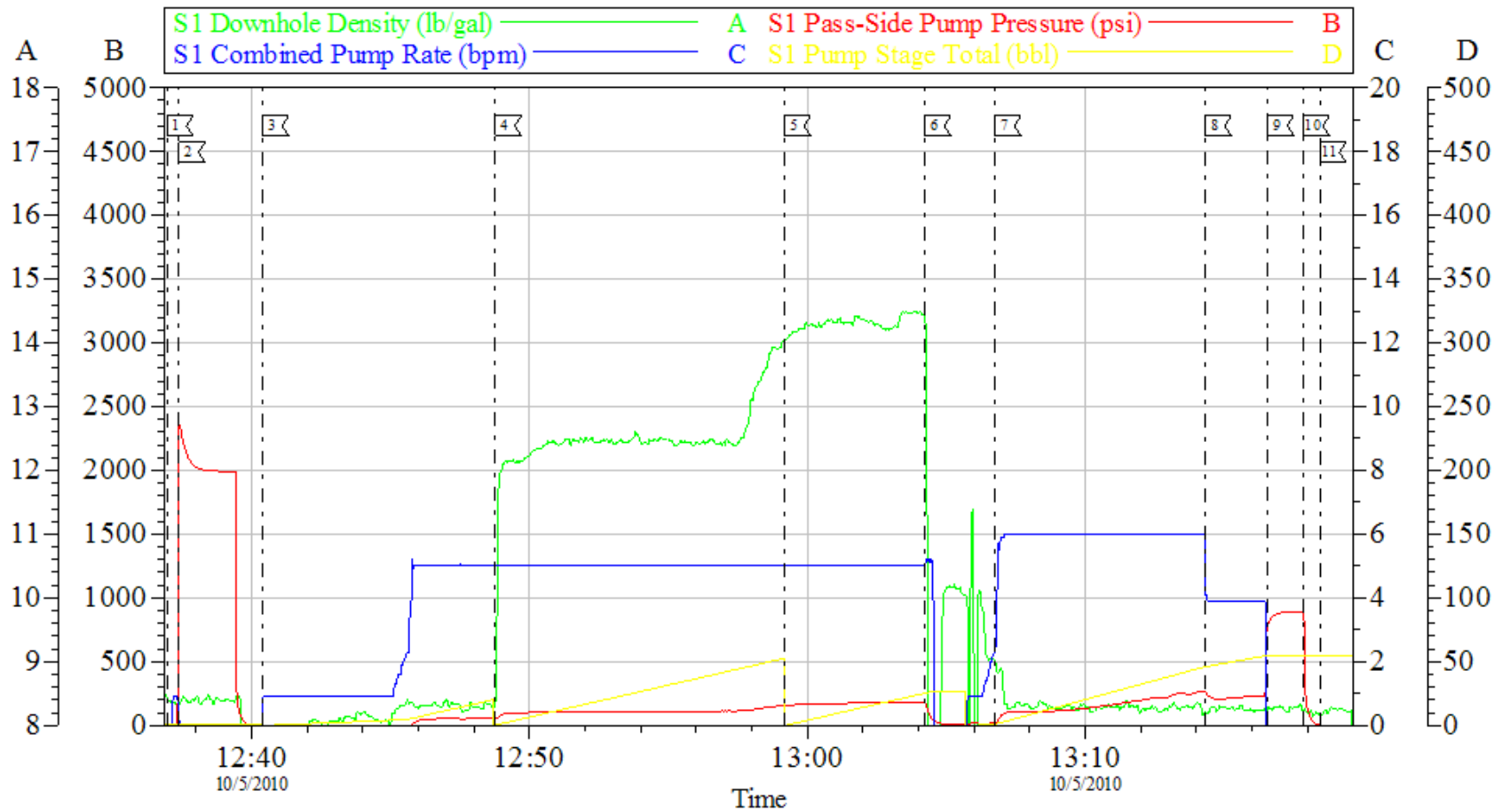
Sold To #: 343492	Ship To #: 2810719	Quote #:	Sales Order #: 7676089
Customer: BILL BARRETT CORPORATION E-BILL		Customer Rep: South, Jody	
Well Name: GGU MILLER FED		Well #: 34B-32-691D	API/UWI #: 05-045-19420
Field: MAMM CREEK	City (SAP): SILT	County/Parish: Garfield	State: Colorado
Legal Description:			
Lat: N 39.48 deg. OR N 39 deg. 28 min. 49.512 secs.		Long: W 107.579 deg. OR W -108 deg. 25 min. 16.223 secs.	
Contractor: Pro Petro		Rig/Platform Name/Num: Pro Petro	
Job Purpose: Cement Surface Casing			Ticket Amount:
Well Type: Development Well		Job Type: Cement Surface Casing	
Sales Person: METLI, MARSHALL		Srvc Supervisor: FEUERBORN, JOHN	MBU ID Emp #: 381677

Activity Description	Date/Time	Cht #	Rate bbl/min	Volume bbl		Pressure psig		Comments
				Stage	Total	Tubing	Casing	
Other	10/05/2010 11:50							RIG RELEASE WELL TO HES
Safety Meeting - Assessment of Location	10/05/2010 11:55							
Pre-Rig Up Safety Meeting	10/05/2010 12:00							
Rig-Up Equipment	10/05/2010 12:05							
Pre-Job Safety Meeting	10/05/2010 12:25							
Start Job	10/05/2010 12:34							OFF LINE CEMENT JOB
Test Lines	10/05/2010 12:37							2000psi ON TRUCK AND LINES
Pump Spacer 1	10/05/2010 12:40		5	20			50.0	H2O
Pump Lead Cement	10/05/2010 12:48		5	50.8			75.0	120skts PUMPED AT 12.3ppg 2.38y 13.75wr TOP OF CEMENT 0'
Pump Tail Cement	10/05/2010 12:59		5	30.5			130.0	120skts PUMPED AT 14.2ppg 1.43y 6.88wr
Drop Top Plug	10/05/2010 13:04							PLUG AWAY
Pump Displacement	10/05/2010 13:06		6				250.0	H2O
Other	10/05/2010 13:14		4	46			220.0	SLOW RATE
Bump Plug	10/05/2010 13:16		4	56			820.0	
Check Floats	10/05/2010 13:17							HOLDING
End Job	10/05/2010 13:18							GOOD RETURNS 28 BBLS TO SURFACE
Other	10/05/2010 13:19							PUMP STAYING ON LOCATION

Activity Description	Date/Time	Cht #	Rate bbl/ min	Volume bbl		Pressure psig		Comments
				Stage	Total	Tubing	Casing	
Crew Leave Location	10/05/2010 15:00							SEND EMPTY BULK BACK TO YARD

BILL BARRETT

SURFACE



Local Event Log			
1 START JOB	12:36:58	2 TEST LINES	12:37:23
3 PUMP SPACER	12:40:24	4 PUMP LEAD CEMENT	12:48:46
5 PUMP TAIL CEMENT	12:59:11	6 DROP PLUG	13:04:14
7 PUMP DISPLACEMENT	13:06:45	8 SLOW RATE	13:14:19
9 BUMP PLUG	13:16:35	10 CHECK FLOATS	13:17:52
11 END JOB	13:18:27		

Customer: BILL BARRETT	Job Date: 05-Oct-2010	Sales Order #: 7676089
Well Description: 34B-32-691	Job Type: SURFACE	ADC Used: YES
Company Rep: JODY SOUTH	Cement Supervisor: JOHN FEUERBORN	Elite #3 JUSTIN BRUN

OptiCem v6.4.0
05-Oct-10 13:32