
BILL BARRETT CORPORATION E-BILL

**GGU MILLER FED 33C-32-691
MAMM CREEK
Garfield County , Colorado**

Cement Surface Casing
02-Oct-2010

Post Job Summary

The Road to Excellence Starts with Safety

Sold To #: 343492		Ship To #: 2810716		Quote #:		Sales Order #: 7677387	
Customer: BILL BARRETT CORPORATION E-BILL				Customer Rep: South, Jodi			
Well Name: GGU MILLER FED			Well #: 33C-32-691		API/UWI #: 05-045-19423		
Field: MAMM CREEK		City (SAP): SILT		County/Parish: Garfield		State: Colorado	
Lat: N 39.481 deg. OR N 39 deg. 28 min. 50.124 secs.				Long: W 107.579 deg. OR W -108 deg. 25 min. 16.428 secs.			
Contractor: PROPETRO			Rig/Platform Name/Num: PRO PETRO				
Job Purpose: Cement Surface Casing							
Well Type: Development Well				Job Type: Cement Surface Casing			
Sales Person: METLI, MARSHALL			Srvc Supervisor: FEUERBORN, JOHN			MBU ID Emp #: 381677	
Job Personnel							
HES Emp Name	Exp Hrs	Emp #	HES Emp Name	Exp Hrs	Emp #	HES Emp Name	Exp Hrs
BATH, KYLE Thomas	4	477632	BRUN, JUSTIN M	4	459269	FEUERBORN, JOHN William	381677
Equipment							
HES Unit #	Distance-1 way	HES Unit #	Distance-1 way	HES Unit #	Distance-1 way	HES Unit #	Distance-1 way
10567589C	120 mile	10867425	120 mile	10897891	120 mile	10951246	120 mile
10995027	120 mile						
Job Hours							
Date	On Location Hours	Operating Hours	Date	On Location Hours	Operating Hours	Date	On Location Hours
10-2-30	4	1					
TOTAL			<i>Total is the sum of each column separately</i>				
Job				Job Times			
Formation Name				Date	Time	Time Zone	
Formation Depth (MD)	Top	Bottom		Called Out	02 - Oct - 2010	06:00	CST
Form Type	BHST			On Location	02 - Oct - 2010	10:15	CST
Job depth MD	835. ft	Job Depth TVD	835. ft	Job Started	02 - Oct - 2010	13:34	CST
Water Depth		Wk Ht Above Floor	1. ft	Job Completed	02 - Oct - 2010	14:24	CST
Perforation Depth (MD)	From	To		Departed Loc			
Well Data							
Description	New / Used	Max pressure psig	Size in	ID in	Weight lbm/ft	Thread	Grade
							Top MD ft
							Bottom MD ft
							Top TVD ft
							Bottom TVD ft
Sales/Rental/3rd Party (HES)							
Description				Qty	Qty uom	Depth	Supplier
PLUG,CMTG,TOP,9 5/8,HWE,8.16 MIN/9.06 MA				1	EA		
R/A DENSOMETER W/CHART RECORDER,/JOB,ZI				1	JOB		
ADC (AUTO DENSITY CTRL) SYS, /JOB,ZI				1	JOB		
PORT. DATA ACQUIS. W/OPTICEM RT W/HES				1	EA		
Tools and Accessories							
Type	Size	Qty	Make	Depth	Type	Size	Qty
Guide Shoe					Packer		
Float Shoe					Bridge Plug		
Float Collar					Retainer		
Insert Float							
Stage Tool							
Miscellaneous Materials							
Gelling Agt		Conc		Surfactant		Conc	
Treatment Fld		Conc		Inhibitor		Conc	
						Acid Type	
						Sand Type	
						Qty	
						Conc	%
						Size	
						Qty	

Fluid Data									
Stage/Plug #: 1									
Fluid #	Stage Type	Fluid Name	Qty	Qty uom	Mixing Density lbm/gal	Yield ft ³ /sk	Mix Fluid Gal/sk	Rate bbl/min	Total Mix Fluid Gal/sk
1	WATER SPACER		20	bbl	.	.0	.0	.0	
2	Lead Cement	VERSACEM (TM) SYSTEM (452010)	120	sacks	12.3	2.38	13.75		
3	Tail Cement	SWIFTCEM (TM) SYSTEM (452990)	120	sacks	14.2	1.43	6.88		6.88
6.88 Gal		FRESH WATER							
4	DISPLACEMENT		59.9	bbl	.	.0	.0	.0	
Calculated Values		Pressures		Volumes					
Displacement	59.9	Shut In: Instant		Lost Returns		Cement Slurry	81	Pad	
Top Of Cement	0	5 Min		Cement Returns	23	Actual Displacement	59.9	Treatment	
Frac Gradient		15 Min		Spacers	20	Load and Breakdown		Total Job	
Rates									
Circulating		Mixing	5	Displacement	6	Avg. Job	5		
Cement Left In Pipe	Amount	0 ft	Reason	Shoe Joint					
Frac Ring # 1 @	ID	Frac ring # 2 @	ID	Frac Ring # 3 @	ID	Frac Ring # 4 @	ID		
The Information Stated Herein Is Correct				Customer Representative Signature					

The Road to Excellence Starts with Safety

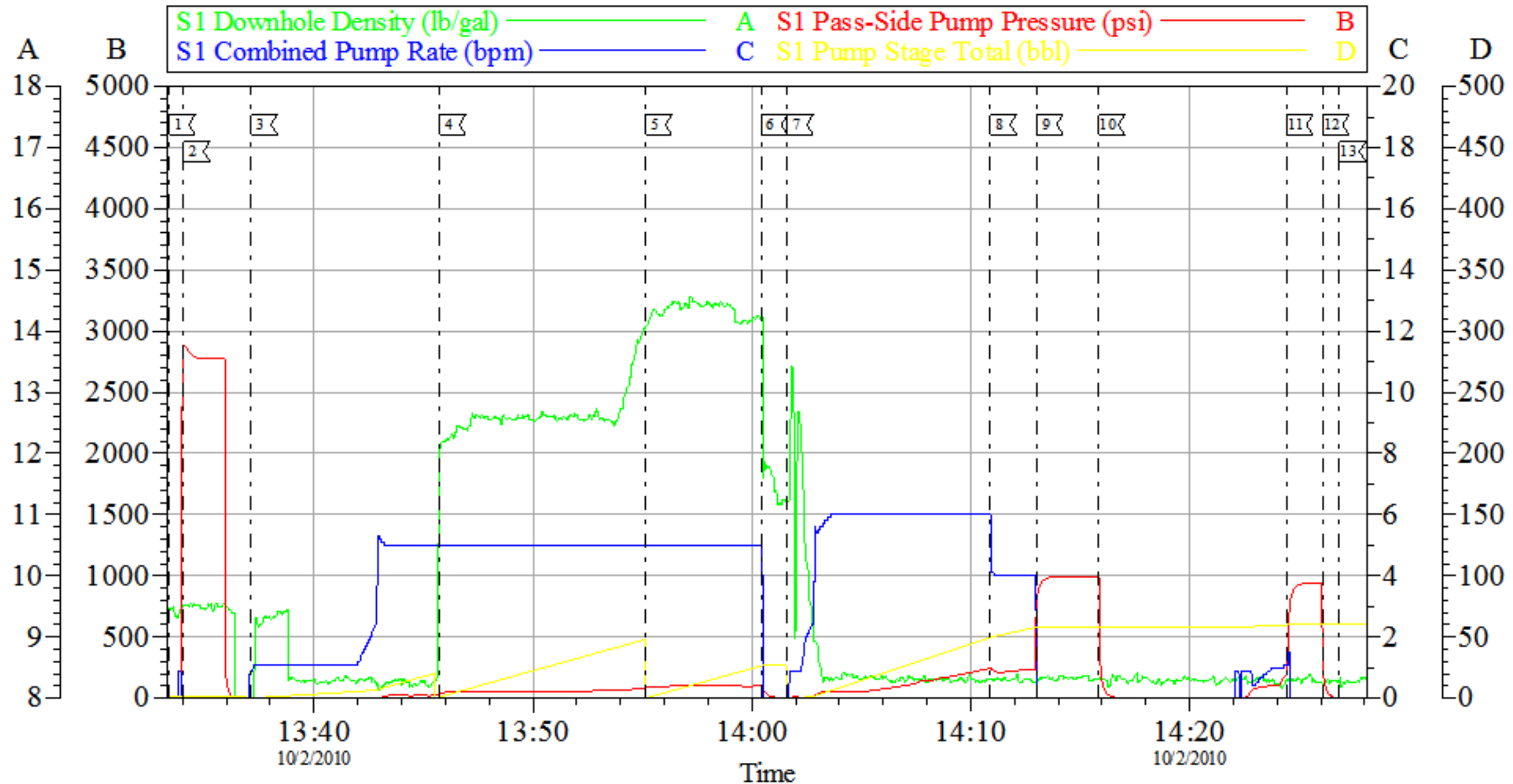
Sold To #: 343492	Ship To #: 2810716	Quote #:	Sales Order #: 7677387
Customer: BILL BARRETT CORPORATION E-BILL		Customer Rep: South, Jodi	
Well Name: GGU MILLER FED	Well #: 33C-32-691	API/UWI #: 05-045-19423	
Field: MAMM CREEK	City (SAP): SILT	County/Parish: Garfield	State: Colorado
Legal Description:			
Lat: N 39.481 deg. OR N 39 deg. 28 min. 50.124 secs.		Long: W 107.579 deg. OR W -108 deg. 25 min. 16.428 secs.	
Contractor: PROPETRO		Rig/Platform Name/Num: PRO PETRO	
Job Purpose: Cement Surface Casing			Ticket Amount:
Well Type: Development Well		Job Type: Cement Surface Casing	
Sales Person: METLI, MARSHALL		Srvc Supervisor: FEUERBORN, JOHN	MBU ID Emp #: 381677

Activity Description	Date/Time	Cht #	Rate bbl/min	Volume bbl		Pressure psig		Comments
				Stage	Total	Tubing	Casing	
Depart Yard Safety Meeting	10/02/2010 07:45							
Crew Leave Yard	10/02/2010 08:00							
Arrive At Loc	10/02/2010 10:15							
Safety Meeting - Assessment of Location	10/02/2010 10:20							
Other	10/02/2010 10:25							SPOT EQUIPMENT
Pre-Rig Up Safety Meeting	10/02/2010 10:50							
Rig-Up Equipment	10/02/2010 11:00							
Other	10/02/2010 13:00							RIG OFF WELL RELEASED TO HES
Pre-Job Safety Meeting	10/02/2010 13:10							
Start Job	10/02/2010 13:33							OFF LINE CEMENT JOB
Test Lines	10/02/2010 13:34							2000psi ON TRUCK AND LINES
Pump Spacer 1	10/02/2010 13:37		5	20			23.0	H2O
Pump Lead Cement	10/02/2010 13:45		5	50.8			56.0	120sks PUMPED AT 12.3ppg 2.38y 13.75wr TOP OF CEMENT 0'
Pump Tail Cement	10/02/2010 13:55		5	30.5			102.0	120sks PUMPED AT 14.2ppg 1.43y 6.88wr
Drop Top Plug	10/02/2010 14:00							PLUG AWAY
Pump Displacement	10/02/2010 14:01		6				280.0	H2O
Other	10/02/2010 14:10		4	50			257.0	SLOW RATE

Activity Description	Date/Time	Cht #	Rate bbl/ min	Volume bbl		Pressure psig		Comments
				Stage	Total	Tubing	Casing	
Bump Plug	10/02/2010 14:13		4	50.9			890.0	
Check Floats	10/02/2010 14:15							REBUMED HOLDING
End Job	10/02/2010 14:26							GOOD RETURNS 23 BBLS TO SURFACE
Other	10/02/2010 14:27							PUMP STAYING ON LOCATION
Crew Leave Location	10/02/2010 15:00							SEND EMPTY BULK BACK TO YARD

BILL BARRETT

SURFACE



Local Event Log			
1	START JOB	13:33:23	2
2	TEST LINES	13:34:03	3
3	PUMP SPACER	13:37:08	4
4	PUMP LEAD CEMENT	13:45:44	5
5	PUMP TAIL CEMENT	13:55:09	6
6	DROP PLUG	14:00:27	7
7	PUMP DISPLACEMENT	14:01:37	8
8	SLOW RATE	14:10:54	9
9	BUMP PLUG	14:13:02	10
10	CHECK FLOATS	14:15:51	11
11	REBUMP PLUG	14:24:26	12
12	CHECK FLOATS	14:26:05	13
13	END JOB	14:26:51	

Customer: BILL BARRETT
 Well Description: GGU FED MILLER33C-32-691
 Company Rep: JODY SMITH

Job Date: 02-Oct-2010
 Job Type: SURFACE
 Cement Supervisor: JOHN FEUERBORN

Sales Order#: 7677387
 ADC Used: YES
 Elite #3: JUSTIN BRUN

OptiCem v6.4.0
 02-Oct-10 14:36