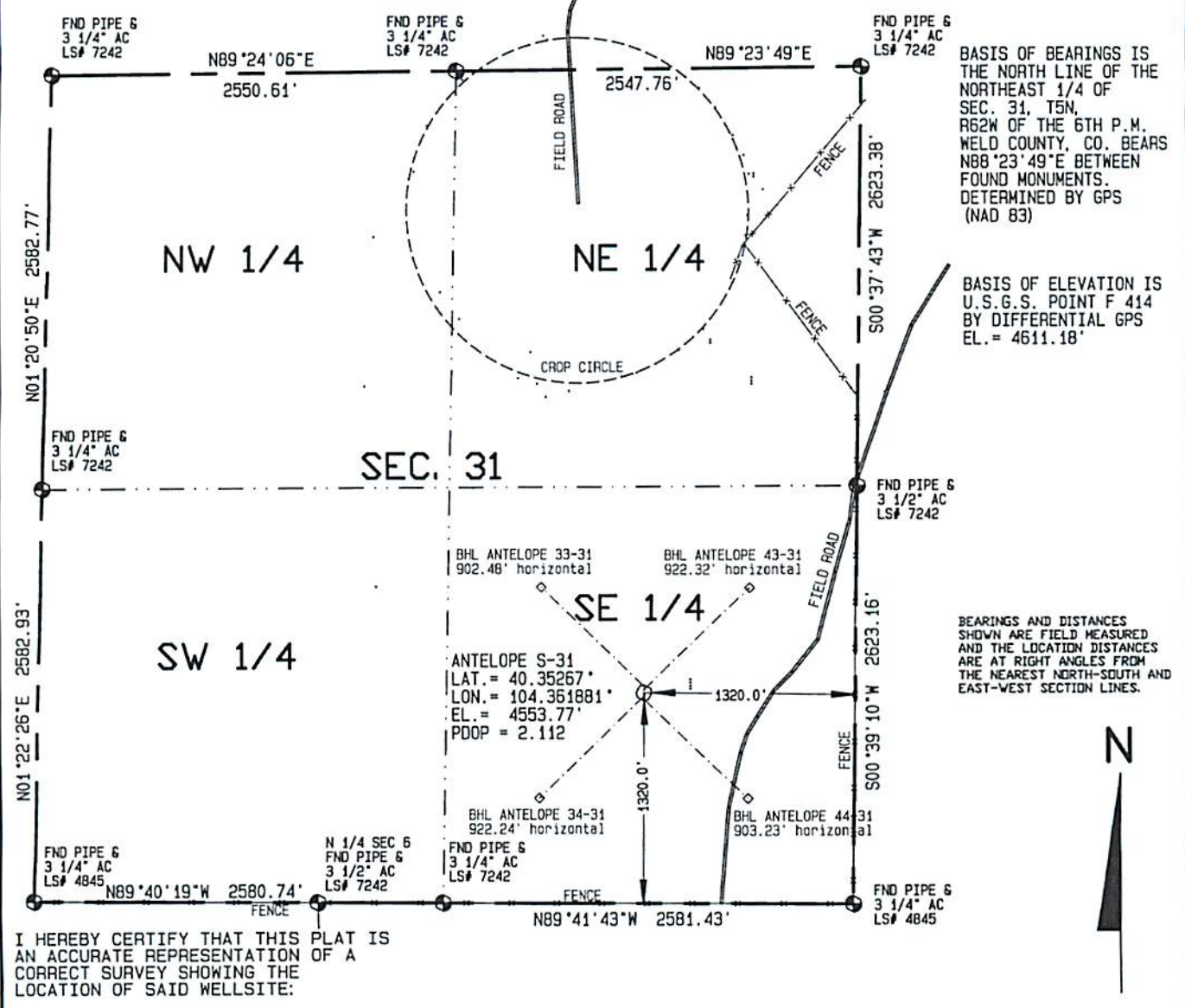


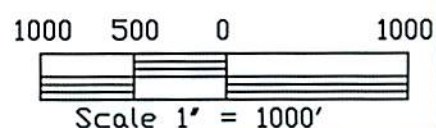
43-31

SURFACE HOLE LOCATIONS						BOTTOM HOLE LOCATIONS					
WELL	LAT.	LONG.	EL.	FSL	FEL	WELL	LAT.	LONG.	N/S	E/W	
33-31	40.35278°	104.36181°	4556.80'	1360.0'	1320.5'	33-31	40.35452°	104.36412°	1980.0' FSL	1980.0' FEL	
43-31	40.35272°	104.36181°	4554.95'	1340.0'	1320.2'	43-31	40.35445°	104.35938°	1980.0' FSL	660.0' FEL	
S-31	40.35267°	104.36181°	4553.77'	1320.0'	1320.0'	S-31	40.35267°	104.36181°	1320.0' FSL	1320.0' FEL	
34-31	40.35261°	104.36181°	4552.45'	1300.0'	1319.7'	34-31	40.35090°	104.36424°	660.0' FSL	1980.0' FEL	
44-31	40.35255°	104.36181°	4552.08'	1280.0'	1319.5'	44-31	40.35083°	104.35950°	660.0' FSL	660.0' FEL	


Visible improvements within 400 feet of the location include:  
NONE



I HEREBY CERTIFY THAT THIS PLAT IS AN ACCURATE REPRESENTATION OF A CORRECT SURVEY SHOWING THE LOCATION OF SAID WELLSITE:



Dan Griggs PLS# 38018

<b>CONTRACT SURVEYORS, LTD.</b> COMPLETE SURVEYING AND GLOBAL POSITIONING  2133 SOUTH BELLAIRE STREET #14 DENVER COLORADO 80222 (303) 756-3695	DATE OF FIELD WORK:	DATE OF DRAWING:
	SEPTEMBER 8, 2010	DECEMBER 8, 2010
	ANTELOPE S-31 PAD SITE 43-31 x 1/2 1/2/11	
	NE 1/4 SE 1/4 SEC. 31, T5N, R62W	
	BONANZA CREEK ENERGY OPERATING COMPANY, LLC	
CSL# 10104-56 REVISED	WELD COUNTY, COLORADO	