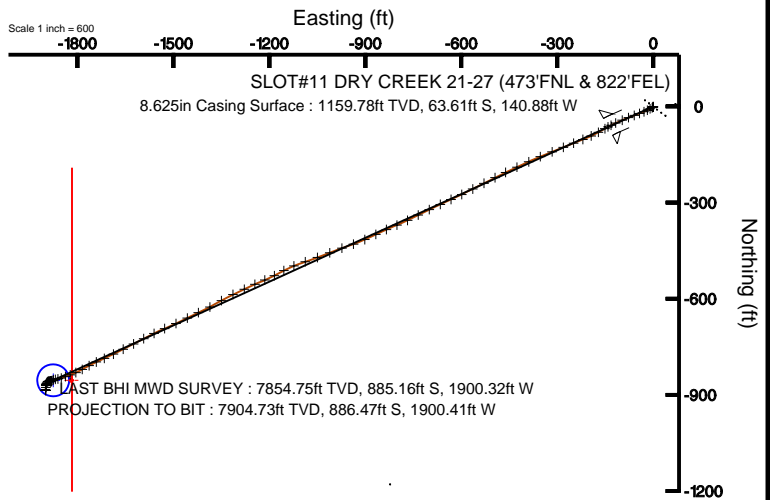
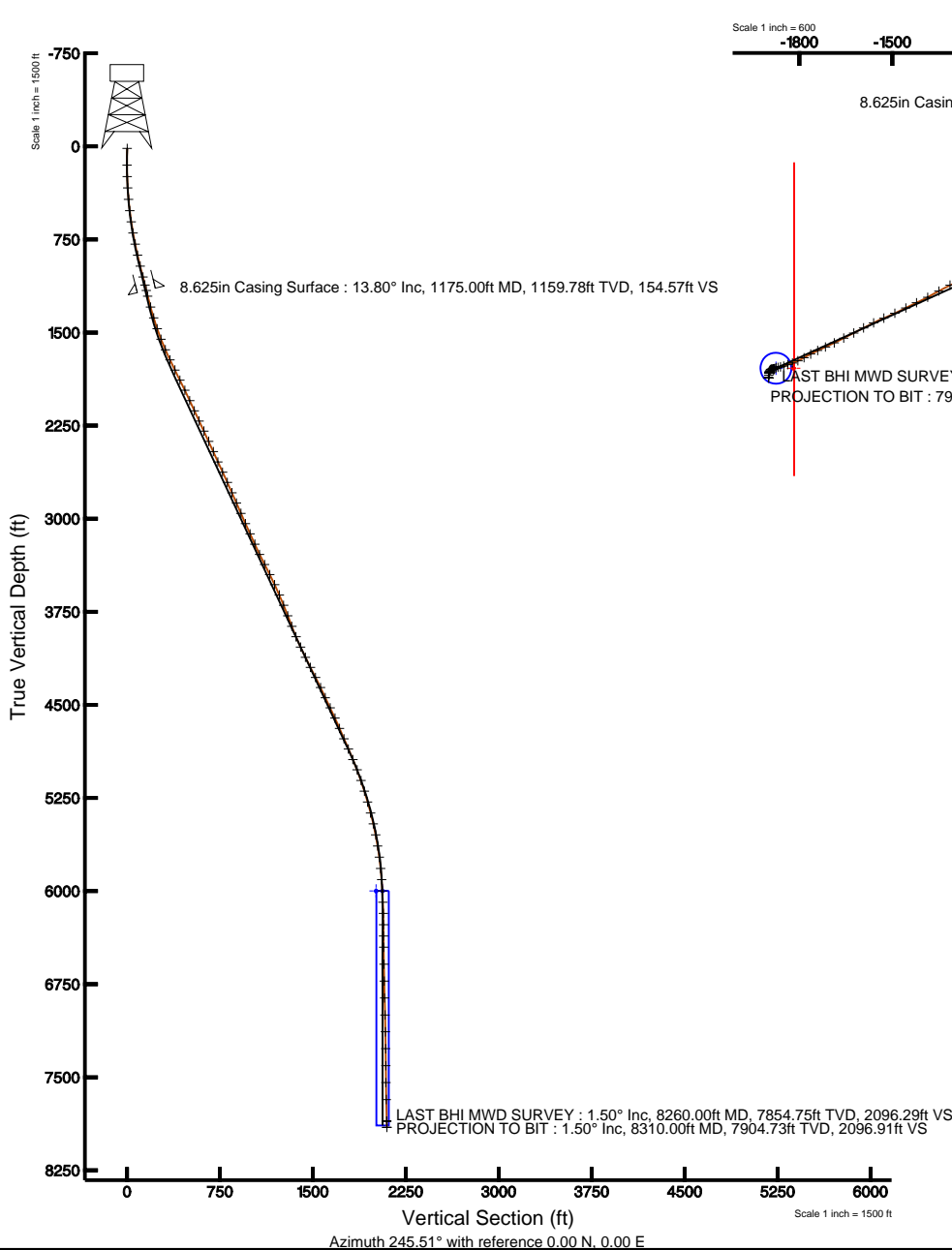


# KERR MCGEE OIL & GAS ONSHORE LP

Location: COLORADO Slot: SLOT#11 DRY CREEK 21-27 (473'FNL & 822'FEL)  
 Field: WELD COUNTY (KERR MCGEE) Well: DRY CREEK 21-27  
 Facility: SEC.27-T1N-R67W Wellbore: DRY CREEK 21-27 PWB



Plus reference wellpath is DRY CREEK 21-27 (REV-0.0) PWB	
True vertical depths are referenced to XTREME 12 (RKB)	Grid System: NAD83 / Lambert Colorado State Plane, Northern Zone (501), US feet
Measured depths are referenced to XTREME 12 (RKB)	North Reference: True north
XTREME 12 (RKB) to Mean Sea Level: 5098 feet	Scale: True distance
Mean Sea Level to Mud line (Facility: SEC.27-T1N-R67W): 0 feet	Depths are in feet
Coordinates are in feet referenced to Slot	Created by: cookdanni on 12/29/2010



BGGM (1945.0 to 2012.0) Dip: 66.76° Field: 53002+T  
 Magnetic North is 8.94 degrees East of True North (at 11/18/2010)

To correct azimuth from Magnetic to True add 8.94 degrees  
 For example: If the Magnetic North Azimuth = 90 degs, then the Grid North Azimuth = 90 + 8.94 = 98.94



# Actual Wellpath Report

DRY CREEK 21-27 awp

Page 1 of 5



INTEQ

## REFERENCE WELLPATH IDENTIFICATION

Operator	KERR MCGEE OIL & GAS ONSHORE LP	Slot	SLOT#11 DRY CREEK 21-27 (473'FNL & 822'FEL)
Area	COLORADO	Well	DRY CREEK 21-27
Field	WELD COUNTY (KERR MCGEE)	Wellbore	DRY CREEK 21-27 awb
Facility	SEC.27-T1N-R67W		

## REPORT SETUP INFORMATION

Projection System	NAD83 / Lambert Colorado State Planes, Northern Zone (501), US feet	Software System	WellArchitect® 2.0
North Reference	True	User	Cookdanm
Scale	0.999964	Report Generated	12/29/2010 at 1:00:08 PM
Convergence at slot	0.41° East	Database/Source file	Denver Server/_DRY_CREEK_21-27_awb.xml

## WELLPATH LOCATION

	Local coordinates		Grid coordinates		Geographic coordinates	
	North[ft]	East[ft]	Easting[USft]	Northing[USft]	Latitude	Longitude
Slot Location	702.20	3273.77	3176366.66	1253693.59	40°01'41.005"N	104°52'12.720"W
Facility Reference Pt			3173097.99	1252968.61	40°01'34.068"N	104°52'54.804"W
Field Reference Pt			3197771.84	1268891.29	40°04'09.600"N	104°47'36.000"W

## WELLPATH DATUM

Calculation method	Minimum curvature	XTREME 12 (RKB) to Facility Vertical Datum	5008.00ft
Horizontal Reference Pt	Slot	XTREME 12 (RKB) to Mean Sea Level	5008.00ft
Vertical Reference Pt	XTREME 12 (RKB)	Facility Vertical Datum to Mud Line (Facility)	0.00ft
MD Reference Pt	XTREME 12 (RKB)	Section Origin	N 0.00, E 0.00 ft
Field Vertical Reference	Mean Sea Level	Section Azimuth	245.51°



# Actual Wellpath Report

DRY CREEK 21-27 awp

Page 2 of 5



INTEQ

## REFERENCE WELLPATH IDENTIFICATION

Operator	KERR MCGEE OIL & GAS ONSHORE LP	Slot	SLOT#11 DRY CREEK 21-27 (473'FNL & 822'FEL)
Area	COLORADO	Well	DRY CREEK 21-27
Field	WELD COUNTY (KERR MCGEE)	Wellbore	DRY CREEK 21-27 awb
Facility	SEC.27-T1N-R67W		

## WELLPATH DATA (88 stations) † = interpolated/extrapolated station

MD [ft]	Inclination [°]	Azimuth [°]	TVD [ft]	Vert Sect [ft]	North [ft]	East [ft]	DLS [°/100ft]	Comments
0.00†	0.000	133.700	0.00	0.00	0.00	0.00	0.00	
15.00	0.000	133.700	15.00	0.00	0.00	0.00	0.00	
150.00	0.900	133.700	149.99	-0.39	-0.73	0.77	0.67	
242.00	1.300	232.200	241.98	0.35	-1.87	0.46	1.83	
334.00	3.500	244.100	333.90	4.18	-3.74	-2.89	2.44	
427.00	5.500	241.700	426.61	11.46	-7.09	-9.37	2.16	
518.00	6.700	243.400	517.09	21.12	-11.54	-17.95	1.33	
609.00	8.100	249.400	607.33	32.82	-16.17	-28.70	1.76	
700.00	10.500	249.100	697.13	47.49	-21.38	-42.45	2.64	
791.00	11.800	249.100	786.41	65.06	-27.66	-58.89	1.43	
882.00	13.000	249.100	875.28	84.56	-34.63	-77.14	1.32	
973.00	14.000	246.200	963.77	105.78	-42.73	-96.78	1.33	
1064.00	14.100	246.600	1052.05	127.87	-51.57	-117.02	0.15	
1130.00	13.900	242.000	1116.09	143.82	-58.48	-131.40	1.71	
1223.00	13.700	240.300	1206.40	165.94	-69.18	-150.83	0.49	
1314.00	15.700	241.300	1294.42	188.95	-80.44	-170.99	2.22	
1405.00	16.800	245.500	1381.79	214.38	-91.80	-193.76	1.77	
1496.00	19.100	248.300	1468.35	242.41	-102.77	-219.56	2.70	
1587.00	21.100	247.700	1553.81	273.65	-114.49	-248.56	2.21	
1678.00	23.900	248.700	1637.87	308.43	-127.40	-280.89	3.11	
1768.00	25.700	248.000	1719.57	346.13	-141.33	-315.97	2.03	
1859.00	25.800	247.300	1801.53	385.64	-156.37	-352.54	0.35	
1950.00	26.200	244.800	1883.33	425.52	-172.56	-388.98	1.28	
2041.00	26.500	246.200	1964.87	465.91	-189.31	-425.74	0.76	
2133.00	24.100	244.500	2048.04	505.22	-205.68	-461.48	2.73	
2223.00	24.300	242.700	2130.13	542.09	-222.09	-494.52	0.85	
2314.00	26.300	243.400	2212.40	580.94	-239.70	-529.18	2.22	
2404.00	25.400	242.400	2293.40	620.14	-257.57	-564.12	1.11	
2495.00	24.500	244.800	2375.90	658.50	-274.65	-598.49	1.49	
2586.00	23.600	245.900	2459.00	695.58	-290.12	-632.19	1.10	
2677.00	24.000	244.100	2542.27	732.30	-305.64	-665.47	0.91	
2768.00	25.700	245.500	2624.84	770.53	-321.91	-700.07	1.98	
2859.00	24.500	242.700	2707.25	809.11	-338.75	-734.80	1.86	
2950.00	23.600	243.800	2790.35	846.17	-355.45	-767.91	1.10	
3041.00	23.700	248.300	2873.71	882.65	-370.25	-801.25	1.99	
3131.00	23.100	246.200	2956.31	918.37	-384.07	-834.21	1.14	
3222.00	24.300	244.500	3039.63	954.94	-399.33	-867.44	1.52	
3313.00	25.100	245.500	3122.31	992.96	-415.40	-901.91	0.99	
3404.00	24.300	250.400	3204.99	1030.92	-429.68	-937.11	2.41	
3495.00	25.700	251.200	3287.46	1069.22	-442.32	-973.43	1.58	
3586.00	27.200	247.600	3368.94	1109.64	-456.61	-1011.35	2.41	
3677.00	27.000	250.500	3449.95	1151.00	-471.43	-1050.05	1.47	
3768.00	25.200	250.800	3531.67	1190.87	-484.70	-1087.82	1.98	
3859.00	23.900	249.100	3614.44	1228.56	-497.65	-1123.34	1.63	
3949.00	21.800	240.600	3697.40	1263.42	-512.36	-1154.94	4.34	



# Actual Wellpath Report

DRY CREEK 21-27 awp

Page 3 of 5



INTEQ

REFERENCE WELLPATH IDENTIFICATION			
Operator	KERR MCGEE OIL & GAS ONSHORE LP	Slot	SLOT#11 DRY CREEK 21-27 (473'FNL & 822'FEL)
Area	COLORADO	Well	DRY CREEK 21-27
Field	WELD COUNTY (KERR MCGEE)	Wellbore	DRY CREEK 21-27 awb
Facility	SEC.27-T1N-R67W		

WELLPATH DATA (88 stations)								
MD [ft]	Inclination [°]	Azimuth [°]	TVD [ft]	Vert Sect [ft]	North [ft]	East [ft]	DLS [°/100ft]	Comments
4040.00	21.400	242.700	3782.01	1296.84	-528.27	-1184.41	0.96	
4131.00	20.900	249.400	3866.89	1329.62	-541.60	-1214.37	2.71	
4222.00	22.800	243.800	3951.36	1363.45	-555.09	-1245.39	3.10	
4313.00	24.600	245.900	4034.68	1400.02	-570.62	-1278.50	2.18	
4404.00	26.400	244.800	4116.82	1439.19	-586.96	-1314.10	2.05	
4495.00	26.800	238.900	4198.20	1479.81	-606.18	-1349.98	2.94	
4586.00	27.400	243.800	4279.22	1521.12	-626.02	-1386.34	2.54	
4677.00	25.000	244.100	4360.86	1561.28	-643.67	-1422.43	2.64	
4767.00	25.500	244.100	4442.26	1599.66	-660.44	-1456.96	0.56	
4858.00	25.900	244.100	4524.26	1639.11	-677.68	-1492.46	0.44	
4949.00	24.300	248.000	4606.67	1677.69	-693.37	-1527.70	2.53	
5040.00	23.200	243.300	4689.97	1714.31	-708.44	-1561.08	2.40	
5131.00	23.500	242.700	4773.52	1750.34	-724.82	-1593.22	0.42	
5221.00	23.500	242.700	4856.05	1786.19	-741.28	-1625.11	0.00	
5313.00	23.000	243.100	4940.58	1822.47	-757.82	-1657.44	0.57	
5403.00	21.500	243.400	5023.88	1856.52	-773.16	-1687.86	1.67	
5494.00	18.900	247.000	5109.28	1887.92	-786.39	-1716.35	3.17	
5585.00	16.400	244.800	5195.99	1915.50	-797.62	-1741.54	2.84	
5676.00	16.100	241.300	5283.35	1940.93	-809.15	-1764.23	1.13	
5767.00	14.800	241.000	5371.06	1965.11	-820.85	-1785.47	1.43	
5858.00	13.500	246.600	5459.30	1987.32	-830.70	-1805.38	2.07	
5949.00	11.000	250.100	5548.23	2006.59	-837.88	-1823.30	2.86	
6040.00	9.200	250.500	5637.81	2022.49	-843.26	-1838.32	1.98	
6131.00	7.800	250.100	5727.81	2035.90	-847.79	-1850.99	1.54	
6222.00	5.900	261.100	5818.16	2046.56	-850.62	-1861.41	2.53	
6313.00	4.500	261.700	5908.78	2054.49	-851.85	-1869.57	1.54	
6404.00	3.500	248.000	5999.56	2060.70	-853.41	-1875.68	1.51	
6495.00	2.200	223.400	6090.45	2065.09	-855.72	-1879.45	1.93	
6585.00	2.400	227.300	6180.38	2068.48	-858.25	-1882.02	0.28	
6676.00	0.600	352.400	6271.36	2070.15	-859.07	-1883.49	3.06	
6767.00	0.700	308.100	6362.35	2070.27	-858.26	-1883.99	0.55	
6858.00	0.900	287.400	6453.34	2071.06	-857.70	-1885.11	0.38	
6995.00	1.400	270.500	6590.31	2073.37	-857.36	-1887.81	0.44	
7131.00	1.100	260.300	6726.28	2076.14	-857.57	-1890.76	0.27	
7267.00	1.200	239.000	6862.25	2078.82	-858.52	-1893.26	0.32	
7404.00	1.600	211.400	6999.21	2081.83	-860.89	-1895.49	0.56	
7540.00	1.800	206.800	7135.15	2085.07	-864.42	-1897.44	0.18	
7676.00	0.900	211.800	7271.12	2087.62	-867.24	-1898.97	0.67	
7813.00	1.000	154.800	7408.10	2088.50	-869.23	-1899.03	0.66	
7949.00	1.000	185.400	7544.08	2089.08	-871.49	-1898.63	0.39	
8086.00	3.800	187.900	7680.95	2092.11	-877.18	-1899.37	2.04	
8260.00	1.500	184.000	7854.75	2096.29	-885.16	-1900.32	1.33	LAST BHI MWD SURVEY
8310.00	1.500	184.000	7904.73	2096.91	-886.47	-1900.41	0.00	PROJECTION TO BIT



# Actual Wellpath Report

DRY CREEK 21-27 awp

Page 4 of 5



INTEQ

REFERENCE WELLPATH IDENTIFICATION			
Operator	KERR MCGEE OIL & GAS ONSHORE LP	Slot	SLOT#11 DRY CREEK 21-27 (473'FNL & 822'FEL)
Area	COLORADO	Well	DRY CREEK 21-27
Field	WELD COUNTY (KERR MCGEE)	Wellbore	DRY CREEK 21-27 awb
Facility	SEC.27-T1N-R67W		

HOLE & CASING SECTIONS Ref Wellbore: DRY CREEK 21-27 awb Ref Wellpath: DRY CREEK 21-27 awp									
String/Diameter	Start MD [ft]	End MD [ft]	Interval [ft]	Start TVD [ft]	End TVD [ft]	Start N/S [ft]	Start E/W [ft]	End N/S [ft]	End E/W [ft]
12.25in Open Hole	15.00	1185.00	1170.00	15.00	1169.49	0.00	0.00	-64.76	-142.96
8.625in Casing Surface	15.00	1175.00	1160.00	15.00	1159.78	0.00	0.00	-63.61	-140.88
7.875in Open Hole	1175.00	8310.00	7135.00	1159.78	7904.73	-63.61	-140.88	-886.47	-1900.41

TARGETS									
Name	MD [ft]	TVD [ft]	North [ft]	East [ft]	Grid East [srv ft]	Grid North [srv ft]	Latitude	Longitude	Shape
DRY CREEK 21-27 GEO TARGET 50'RADIUS (1325'FNL & 2580'FWL, REV-1)		6000.00	-854.91	-1876.39	3174496.46	1252825.40	40°01'32.556"N	104°52'36.840"W	circle
DRY CREEK 21-27 HARDLINE 57'E OF GEO TARGET		6000.00	-854.92	-1819.39	3174553.46	1252825.80	40°01'32.556"N	104°52'36.107"W	point

WELLPATH COMPOSITION Ref Wellbore: DRY CREEK 21-27 awb Ref Wellpath: DRY CREEK 21-27 awp				
Start MD [ft]	End MD [ft]	Positional Uncertainty Model	Log Name/Comment	Wellbore
15.00	1130.00	NaviTrak (Standard)	BHI MWD SURVEY 12.25 HOLE <15-1130>	DRY CREEK 21-27 awb
1130.00	8260.00	NaviTrak (Standard)	BHI MWD SURVEY 7.875 HOLE <1223-8260>	DRY CREEK 21-27 awb
8260.00	8310.00	Blind Drilling (std)	Projection to bit	DRY CREEK 21-27 awb



# Actual Wellpath Report

DRY CREEK 21-27 awp

Page 5 of 5



INTEQ

## REFERENCE WELLPATH IDENTIFICATION

Operator	KERR MCGEE OIL & GAS ONSHORE LP	Slot	SLOT#11 DRY CREEK 21-27 (473'FNL & 822'FEL)
Area	COLORADO	Well	DRY CREEK 21-27
Field	WELD COUNTY (KERR MCGEE)	Wellbore	DRY CREEK 21-27 awb
Facility	SEC.27-T1N-R67W		

## WELLPATH COMMENTS

MD [ft]	Inclination [°]	Azimuth [°]	TVD [ft]	Comment
8260.00	1.500	184.000	7854.75	LAST BHI MWD SURVEY
8310.00	1.500	184.000	7904.73	PROJECTION TO BIT