



1120 Lincoln Street, Suite 801, Denver Colorado 80203 (303) 894-2100 Fax (303) 894-2109

**WELL ABANDONMENT REPORT**

Submit original plus one copy. This form is to be submitted as an intent whenever a plugging is planned on a borehole. The approved intent shall be valid for twelve months after the approval date after that period a new intent will be required. After the plugging is complete, this form and one copy shall again be submitted as a subsequent report of the work as actually completed.

**RECEIVED**  
NOV 10 2010  
**COGCC**

COGCC Operator Number: 97810	Contact Name & Telephone Craig Aton	24 hour notice required, contact:															
Name of Operator: Yates Petroleum Corporation	No: (575) 748-1471																
Address: 105 South Fourth Street	Fax: (575) 748-4585	Tel:															
City: Artesia State: NM Zip: 88210																	
API Number 05-081-07033		<b>Complete the Attachment Checklist</b> <table border="1"> <tr> <td>Wellbore Diagram</td> <td></td> <td></td> </tr> <tr> <td>Cement Job Summary</td> <td>X</td> <td></td> </tr> <tr> <td>Wireline Job Summary</td> <td>X</td> <td></td> </tr> <tr> <td>P&amp;A Procedure</td> <td></td> <td></td> </tr> <tr> <td></td> <td></td> <td></td> </tr> </table>	Wellbore Diagram			Cement Job Summary	X		Wireline Job Summary	X		P&A Procedure					
Wellbore Diagram																	
Cement Job Summary	X																
Wireline Job Summary	X																
P&A Procedure																	
Well Name: Gehrig State Well Number: 1																	
Location (QtrQtr, Sec, Twp, Rng, Meridian): SWNW Sec 23-T12N-R94W 6th PM																	
County: Moffat Federal, Indian or State Lease Number: 96-4029-S																	
Field Name: Wildcat Field Number: 99999																	

Notice of Intent to Abandon  Subsequent Report of Abandonment

**Only Complete the Following Background Information for Intent to Abandon**

Latitude: \_\_\_\_\_ Longitude: \_\_\_\_\_  
 GPS Data: \_\_\_\_\_  
 Date of Measurement: \_\_\_\_\_ PDOP Reading \_\_\_\_\_ Instrument Operator's Name \_\_\_\_\_

Reason for Abandonment:  Dry  Production Sub-economic  Mechanical Problems  Other  
 Casing to be Pulled:  Yes  No Top of Casing Cement: \_\_\_\_\_  
 Fish In Hole:  Yes  No If yes, explain details below  
 Wellbore has Uncemented Casing Leaks:  Yes  No If yes, explain details below  
 Details: \_\_\_\_\_

**Current and Previously Abandoned Zones**

Formation	Perforations - Top	Perforations - Bottom	Date Abandoned	Method of Isolation (None, Squeezed, BP, Cement, etc.)	Plug Depth
Fort Union	3949'	3977'	9/24/2010	Squeezed	3832'
Almond	7050' <i>OPEN HOLE</i>	8050'	8/3/2001	Cement	7806'

**Casing History**

String	Size of Hole	Size of Casing	Weight per ft	Setting Depth	Sacks Cement	Cement Bottom	Cement Top
Conductor	24"	16"		40'	110	40'	0
Surface	12-1/4"	8-5/8"	24#	1132'	791	1132'	0
Production	7-7/8"	4-1/2"	11.6#	5028'	565	5028'	2130' (CBL)

**Plugging Procedure for Intent and Subsequent Report**

CIBP #1: Depth \_\_\_\_\_ with \_\_\_\_\_ sacks cmt on top. CIBP #2: Depth \_\_\_\_\_ with \_\_\_\_\_ sacks cmt on top. NOTE: Two (2) sacks cement required on all CIBPs.

Set 60 sks cmt from 3832 ft. to 4030 ft. in  Casing  Open Hole  Annulus  
 Set 10 sks cmt from 1064 ft. to 1130 ft. in  Casing  Open Hole  Annulus  
 Set 5 sks cmt from 856 ft. to 920 ft. in  Casing  Open Hole  Annulus  
 Set 25 sks cmt from 0 ft. to 80 ft. in  Casing  Open Hole  Annulus  
 Set \_\_\_\_\_ sks cmt from \_\_\_\_\_ ft. to \_\_\_\_\_ ft. in  Casing  Open Hole  Annulus

Perforate and squeeze at 1190 ft. with 46 sacks Leave at least 100 ft. in casing - CIRC @ 1130'  
 Perforate and squeeze at 972 ft. with 230 sacks Leave at least 100 ft. in casing - CIRC @ 920', CIRCULATED  
 Perforate and squeeze at \_\_\_\_\_ ft. with \_\_\_\_\_ sacks Leave at least 100 ft. in casing CMT TO SURFACE

Set \_\_\_\_\_ sacks half in, half out surface casing from \_\_\_\_\_ ft. to \_\_\_\_\_ ft.  
 Set \_\_\_\_\_ sacks at surface  
 Cut four feet below ground level, weld on plate Dry-Hole Marker:  Yes  No  
 Set \_\_\_\_\_ sacks in rat hole Set \_\_\_\_\_ sacks in mouse hole

**Additional Plugging Information for Subsequent Report Only**

Casing Recovered: \_\_\_\_\_ ft. of \_\_\_\_\_ in. casing Plugging date: 9/24/10  
 \*Wireline Contractor: JW Wireline Services \*Cementing Contractor: Superior Well Services  
 Type of Cement and Additives Used: 15.8 pg Class "G" cement; 2% CaCl<sub>2</sub>

I hereby certify that the statements made in this form are, to the best of my knowledge, true, correct, and complete.

Print Name: Craig Aton Email: caton@yatespetroleum.com  
 Signed: \_\_\_\_\_ Title: Regulatory Compliance Tech Date: 10/18/10  
 OGCC Approved: \_\_\_\_\_ Title: PE II Date: 1/5/2011

CONDITIONS OF APPROVAL, IF ANY:



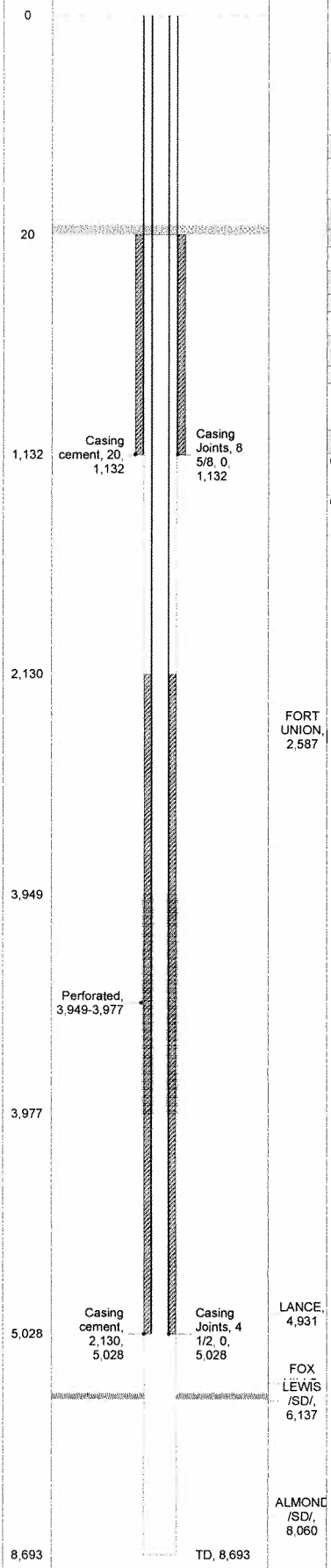
# Yates Daily Completion Report

GEHRIG STATE #1

Day #

Report # 1.0, Report Date: 9/1/2010

Hole Direction: VERTICAL - ORIGINAL HOLE		9/1/2010	API/UJM	Surface Legal Location		County	State	Operator	
ftKB (MD)	Schematic - Actual	Frm Fina	0508107033	SEC 23/TWN 12N/RNG 94W/UNT E		MOFFAT	COLORADO	YATES PETROLEUM CORPORATION	
Bottom Hole Legal Location				N/S Dist (ft)	N/S Ref	E/W Dist	E/W Ref	Gr Elev (ft)	KB-Grd (ft)
				1,494.0	FNL	1,288.0	FWL	6,089.00	20.00
AFE Number		Job Category	Primary Job Type		Department		Total AFE Amount		
101530		P&A	Existing Well		Completions		67,400.00		
<b>Phases</b>									
Phase Type 1						Actual Phase Cost			
COMPLETION						87,248.00			
<b>Daily Operations</b>									
Day No.	Report Start Date	Report End Date	Rig Time ( ...)	Formation	Lithology	Daily Report Summary			
0	9/1/2010 07:00	9/1/2010 17:00				STAND BY			
Operations Next Report Period					Remarks				
Daily Cost Total					Actual Phase Cost		Cum Cost To Date		
					87,248.00				
<b>Daily Contacts</b>									
Job Contact					Phone Mobile				
BRETT DEMPSEY, OPER. MANAGER					303-618-4240				
<b>Time Log</b>									
Start Time	End Time	Dur (hrs)	Time Code		Comment				
07:00	17:00	10.00	STAND BY						
<b>Daily Costs</b>									
Cost Description			Cost Details		Cost		Vendor		
<b>Other In Hole</b>									
Description			Run Date		OD (in)	Top (ftKB)		Btm (ftKB)	
Cement Retainer			9/23/2010 18:00		3.593	920.0		922.0	
Cement Retainer			9/22/2010 16:30		3.593	1,130.0		1,132.0	
<b>Casing Strings</b>									
Casing Description		OD (in)	String Grade	Wt (lbs/ft)	Set Depth (ftKB)		Length (ft)		
Surface Casing		8 5/8	J-55	24.00	1,132.0		1,132.00		
Casing Description		OD (in)	String Grade	Wt (lbs/ft)	Set Depth (ftKB)		Length (ft)		
Production Casing		4 1/2	J-55	11.60	5,028.0		5,028.00		

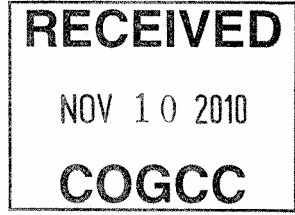


FORT UNION, 2,587

LANCE, 4,931

FOX LEWIS /SD/, 6,137

ALMOND /SD/, 8,060



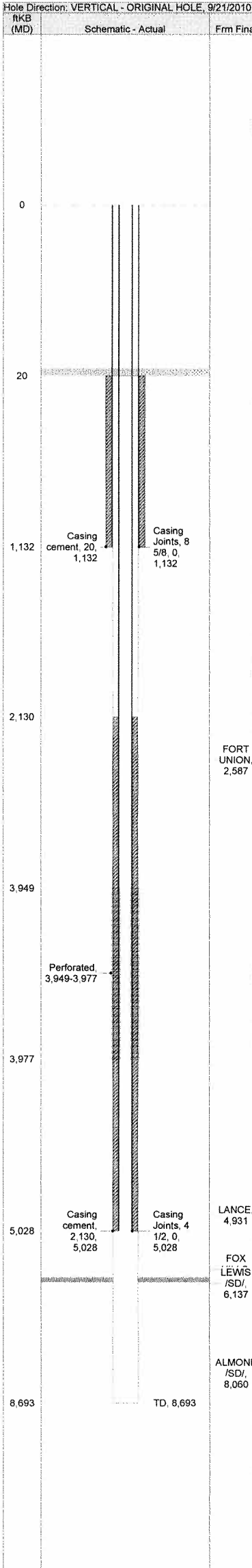


# Yates Daily Completion Report

GEHRIG STATE #1

Day # 1

Report # 2.0, Report Date: 9/21/2010



Hole Direction: VERTICAL - ORIGINAL HOLE, 9/21/2010	API/UJM	Surface Legal Location	County	State	Operator
ftKB (MD)	0508107033	SEC 23/TWN 12N/RNG 94W/UNT E	MOFFAT	COLORADO	YATES PETROLEUM CORPORATION
Schematic - Actual	Frm Final	Bottom Hole Legal Location	N/S Dist (ft)	N/S Ref	E/W Dist
			1,494.0	FNL	1,288.0
			E/W Ref	FWL	Gr Elev (ft)
					6,089.00
			KB-Grd (ft)		20.00
AFE Number	Job Category	Primary Job Type	Department	Total AFE Amount	
101530	P&A	Existing Well	Completions	67,400.00	

<b>Phases</b>	
Phase Type 1	Actual Phase Cost
COMPLETION	87,248.00

<b>Daily Operations</b>						
Day No.	Report Start Date	Report End Date	Rig Time ( ...)	Formation	Lithology	Daily Report Summary
1	9/21/2010 07:30	9/21/2010 16:30				MIRU comp unit, lay down rods, trip tubing
Operations Next Report Period			Remarks			
P&A Operations			MIRU completion unit, lay down rods, roundtrip tubing.			
Daily Cost Total		Actual Phase Cost		Cum Cost To Date		
7,993.00		87,248.00		7,993.00		

<b>Daily Contacts</b>	
Job Contact	Phone Mobile
RANDY MOELLER, COMPLETIONS FOREMAN	307-350-9473
Job Contact	Phone Mobile
BRETT DEMPSEY, OPER. MANAGER	303-618-4240

<b>Time Log</b>				
Start Time	End Time	Dur (hrs)	Time Code	Comment
07:30	07:45	0.25	SAFETY MEETING	
07:45	09:00	1.25	MIRU COMPLETION RIG	
09:00	10:30	1.50	PULL ROD PUMP	Lay down polish rod, stuffing box. Lay down 154 7/8" guided rods.
10:30	12:30	2.00	ND TREE/ NU BOP	
12:30	15:00	2.50	PULL TUBING	Release tubing anchor catcher. POOH with 1 joint 2-3/8" tubing, 2-3/8" x 4' pup joint, 2-3/8" x 6' pup joint, 2-3/8" x 8' pup joint, 122 joints 2-3/8" tubing, 2-3/8" x 8' pup joint, 2-3/8" x 2-7/8" x-over sub, 2-7/8" x 2' pup joint, 2-7/8" x 4' pup joint, 2-7/8" stator, 2-7/8" x 2' pup joint, 2-7/8" x 2-3/8" x-over sub, 2-3/8" x 2' pup joint, 4-1/2" x 2-3/8" tubing anchor catcher, 4 joints 2-3/8" tubing. Out of the hole with all equipment.
15:00	16:30	1.50	RUN TUBING	RIH with 128 joints 2-3/8" tubing, 4' 2-3/8" pup joint, 8' 2-3/8" pup joint. EOT at 4030' secure well SDFN.

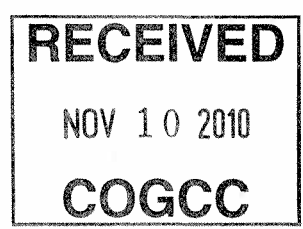
<b>Daily Costs</b>			
Cost Description	Cost Details	Cost	Vendor
Contract Labor & Services	Cost for contract labor and services	1,277.00	MOELLER CONSULTING
Rig Expense	Cost of setup, use and removal	4,290.00	BASIC ENERGY SERVICES
Other P & A costs	Cost other than above for plugging of a well	50.00	United Services
Tools & Services	Cost of permanent tools and services used in plugg	290.00	WEATHERFORD
Contract Labor & Services	Cost for contract labor and services	1,434.00	BASIC ENERGY SERVICES
Contract Labor & Services	Cost for contract labor and services	331.00	BASIC ENERGY SERVICES
Contract Labor & Services	Cost for contract labor and services	321.00	WEATHERFORD

<b>Rigs</b>					
Rig Contractor	Rig Type	Rig No.	Rig Supervisor	Rig Start Date	Rig Release Date
BASIC WELL SERVICE	WSU - Completion Rig	1519	RANDY MOELLER, COMPLETIONS FOREMAN	9/21/2010 07:30	9/24/2010 11:00

<b>Other In Hole</b>					
Description	Run Date	OD (in)	Top (ftKB)	Botm (ftKB)	
Cement Retainer	9/23/2010 18:00	3.593	920.0	922.0	
Cement Retainer	9/22/2010 16:30	3.593	1,130.0	1,132.0	

<b>Casing Strings</b>					
Casing Description	OD (in)	String Grade	Wt (lbs/ft)	Set Depth (ftKB)	Length (ft)
Surface Casing	8 5/8	J-55	24.00	1,132.0	1,132.00
Casing Description	OD (in)	String Grade	Wt (lbs/ft)	Set Depth (ftKB)	Length (ft)
Production Casing	4 1/2	J-55	11.60	5,028.0	5,028.00

LANCE, 4,931  
FOX LEWIS /SD/, 6,137  
ALMOND /SD/, 8,060  
TD, 8,693





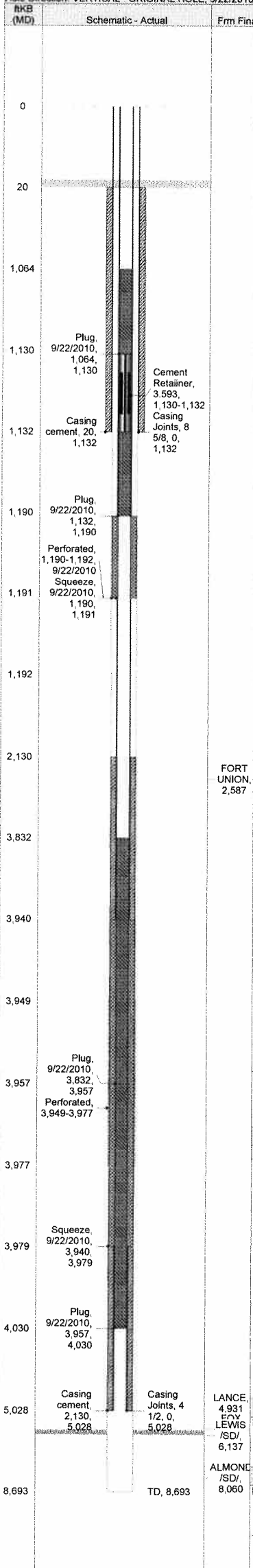
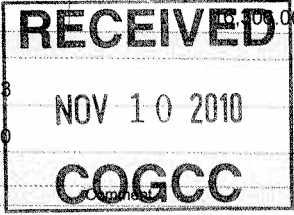
# Yates Daily Completion Report

GEHRIG STATE #1

Day # 2

Report # 3.0, Report Date: 9/22/2010

Hole Direction: VERTICAL - ORIGINAL HOLE, 9/22/2010		API/UJM	Surface Legal Location		County	State	Operator
AKB (MD)	Schematic - Actual	Frm Fina	0508107033	SEC 23/TWN 12N/RNG 94W/UNT E	MOFFAT	COLORADO	YATES PETROLEUM CORPORATION
Bottom Hole Legal Location			N/S Dist (ft)	N/S Ref	E/W Dist	E/W Ref	Gr Elev (ft)
			1,494.0	FNL	1,288.0	FWL	6,089.00
AFE Number		Job Category	Primary Job Type		Department	Total AFE Amount	
101530		P&A	Existing Well		Completions	67,400.00	
<b>Phases</b>							
Phase Type 1					Actual Phase Cost		
COMPLETION					87,248.00		
<b>Daily Operations</b>							
Day No.	Report Start Date	Report End Date	Rig Time (	Formation	Lithology	Daily Report Summary	
2	9/22/2010 06:30	9/22/2010 18:00				P&A Operations	
Operations Next Report Period				Remarks			
P&A Operations				P&A Operations			
Daily Cost Total			Actual Phase Cost		Cum Cost To Date		
8,313.00			87,248.00		67,400.00		
<b>Daily Contacts</b>							
Job Contact				Phone Mobile			
RANDY MOELLER, COMPLETIONS FOREMAN				307-350-9478			
Job Contact				Phone Mobile			
BRETT DEMPSEY, OPER. MANAGER				303-618-4240			
<b>Time Log</b>							
Start Time	End Time	Dur (hrs)	Time Code				
06:30	06:45	0.25	SAFETY MEETING				
06:45	09:15	2.50	CEMENTING				
MIRU Superior Well Services. Load the hole with 30 bbls fresh water. Mix and pump 50 sacks (10.2 bbls) of 15.8 ppg class G cement with 1.15 yield, displace with 12.7 bbls fresh water. Lay down 24 joints and pup joints, EOT at 3260'. Load the hole with 4 bbls fresh water. Squeeze 35 sacks (7.1 bbls) of 15.8 ppg class G cement into perforations 3940'-3979'. Start pressure 210, finish pressure 1415, Max pressure 1625.							
09:15	10:30	1.25	LD TUBING				
LD Stand back 18 stands, found a hole in the tubing 12 joints off bottom. Have to go back and tag cement.							
10:30	12:00	1.50	WIRELINE				
MIRU JW Wireline Services RIH with 2" sinker bar and 1-11/16" CCL, tag cement at 3957'(WLM). POOH LD tools, rig down JW Wireline Services. Kris Neidel Area Inspector with COGCC on location and witnessed wireline tag.							
12:00	13:30	1.50	RUN TUBING				
RIH with 126 joints of 2-3/8" tubing tag at 3957'.							
13:30	14:30	1.00	CEMENTING				
Load the hole with 4 bbls fresh water. Mix and pump 10 sacks (1.9 bbls) of 15.8 ppg class G cement with 1.15 yield, displace with 14.7 bbls fresh water. Lay down 22 joints, EOT at 3260'. Mix and pump 44 sacks (32 bbls) of 9.5 ppg kill mud displace with 3.7 bbls fresh water. Cement and mud pumping witnessed by Kris Neidel Area Inspector for COGCC. After this job Kris left location.							
14:30	16:00	1.50	LD TUBING				
Lay down 68 joints 2-3/8" tubing, stand back 36 joints of 2-3/8" tubing.							
16:00	17:15	1.25	WIRELINE				
Rig up JW Wireline Services, Load the hole with bbls of fresh water. RIH with 2-3/4" EHSC casing gun loaded 4 spf, 120 degree phased with 15 gram charges with .40 EHD, 40.5 inches of penetration. Perforate 1190'-1192' (4 holes) (WLM). POOH LD tools. Rig up Superior Well Services establish circulation with 11 bbls of fresh water. RIH with #10 setting tool and Casper Oil Tools Cast Iron Cement Retainer, set retainer at 1130' (WLM). POOH LD tools. RDMO JW Wireline Services.							
17:15	18:15	1.00	CEMENTING				
RIH with stinger seal assembly and 36 joints of tubing. Sting into cement retainer at 1130'. Mix and pump 55 sacks (11.2 bbls) of 15.8 ppg class G cement with 2% cacl with 1.15 yield, displace with 3.2 bbls fresh water. Sting out of cement retainer and leave 10 sacks (1 bbl) of cement on top of the cement retainer. Lay down 6 joints of tubing. Mix and pump 9.5 ppg kill mud to surface							
18:15	18:45	0.50	LD TUBING				
Lay down 30 joints of tubing and stinger seal assembly.							
18:45	20:00	1.25	WAIT ON CEMENT				
Wait on cement. Open surface casing to inventory tanks on cement truck, no flow back. Secure well. SDFN.							
<b>Daily Costs</b>							
Cost Description		Cost Details		Cost	Vendor		
Contract Labor & Services		Cost for contract labor and services		1,277.00	MOELLER CONSULTING		
Rig Expense		Cost of setup, use and removal		5,820.00	BASIC ENERGY SERVICES		
Other P & A costs		Cost other than above for plugging of a well		50.00	United Services		
Tools & Services		Cost of permanent tools and services used in plugg		290.00	WEATHERFORD		
Contract Labor & Services		Cost for contract labor and services		682.00	Davis Construction		
Contract Labor & Services		Cost for contract labor and services		194.00	Davis Construction		
<b>Rigs</b>							
Rig Contractor	Rig Type	Rig No.	Rig Supervisor		Rig Start Date	Rig Release Date	
BASIC WELL SERVICE	WSU - Completion Rig	1519	RANDY MOELLER, COMPLETIONS FOREMAN		9/21/2010 07:30	9/24/2010 11:00	
<b>Safety Checks</b>							
Date	Type	Comment					
9/22/2010 06:30	Safety Meeting	Discussed cementing procedures, laying down tubing procedures, overhead loads, pinch points, PPE.					







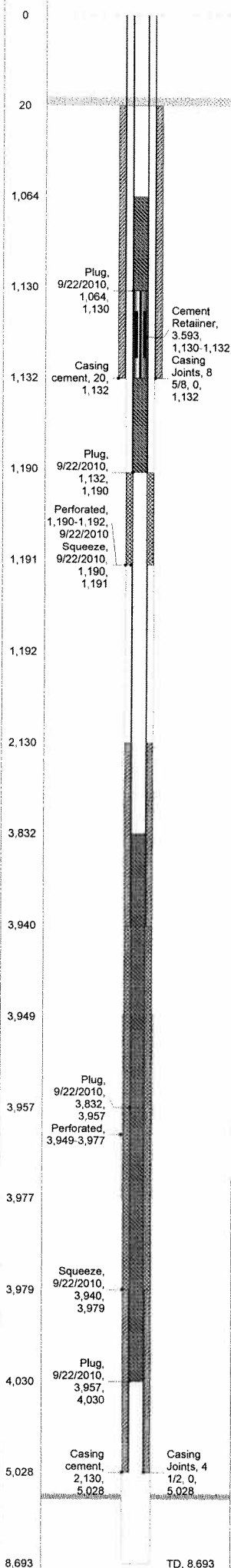
# Yates Daily Completion Report

GEHRIG STATE #1

Day # 3

Report # 4.0, Report Date: 9/23/2010

Hole Direction: VERTICAL - ORIGINAL HOLE, 9/23/2010		API/UWI	Surface Legal Location		County	State	Operator	
RKB (MO)	Schematic - Actual	Frm Fina	0508107033	SEC 23/TWN 12N/RNG 94W/UNT E	MOFFAT	COLORADO	YATES PETROLEUM CORPORATION	
Bottom Hole Legal Location			N/S Dist (ft)	N/S Ref	E/W Dist	E/W Ref	Gr Elev (ft)	KB-Grd (ft)
			1,494.0	FNL	1,288.0	FWL	6,089.00	20.00
AFE Number		Job Category	Primary Job Type		Department	Total AFE Amount		
101530		P&A	Existing Well		Completions	67,400.00		
<b>Phases</b>								
Phase Type 1					Actual Phase Cost			
COMPLETION					87,248.00			
<b>Daily Operations</b>								
Day No.	Report Start Date	Report End Date	Rig Time (h)	Formation	Lithology	Daily Report Summary		
3	9/23/2010 06:30	9/23/2010 12:00				P&A Operations		
Operations Next Report Period				Remarks				
P&A Operations				P&A Operations				
Daily Cost Total			Actual Phase Cost		Cum Cost To Date			
20,057.00			87,248.00		36,363.00			
<b>Daily Contacts</b>								
Job Contact					Phone Mobile			
RANDY MOELLER, COMPLETIONS FOREMAN					307-350-9473			
Job Contact					Phone Mobile			
BRETT DEMPSEY, OPER. MANAGER					303-618-4240			
<b>Time Log</b>								
Start Time	End Time	Dur (hrs)	Time Code		Comment			
06:30	06:45	0.25	SAFETY MEETING					
06:45	16:00	9.25	GENERAL OPERATIONS		Rig down floor, nipple down Bop's. Dig out cellar. No flow on surface but gas working out of the fluid, watch wellhead for gas to subside. Nipple up Bop's. Wait on wireline tools.			
16:00	17:45	1.75	WIRELINE		MIRU E&P Wireline, RIH with 2-3/4" CBL/CCL/GR logging tool. Set down on cement at 985'. Bond log shows no cement on annulus. RIH with 2" EHSC casing puncher with 7 gram charges loaded 0 degree phasing with 1 spf. Perforate from 972'-977' (6 holes). Load the hole with 3 bbls fresh water, establish circulation with 7 bbls fresh water. RDMO E&P Wireline Service.			
17:45	18:45	1.00	CEMENTING		RIH with Casper Oil Tools mechanical cement retainer and 29 joints of tubing. Set retainer at 920'. Mix and pump 235 sacks (48 bbls) of 15.8 ppg class G cement with 1.15 yield with 2% cacl. Full returns while pumping, circulated 1-1/2 bbls to the pit. Displace with 2.4 bbls fresh water. Sting out of cement retainer and leave 5 sacks (1 bbl) of 15.8 ppg cement on top of the retainer.			
18:45	19:30	0.75	LD TUBING		Lay down 29 joints of tubing and mechanical setting tool.			
<b>Daily Costs</b>								
Cost Description			Cost Details		Cost	Vendor		
Contract Labor & Services			Cost for contract labor and services		1,277.00	MOELLER CONSULTING		
Rig Expense			Cost of setup, use and removal		5,494.00	BASIC ENERGY SERVICES		
Other P & A costs			Cost other than above for plugging of a well		50.00	United Services		
Tools & Services			Cost of permanent tools and services used in plugg		290.00	WEATHERFORD		
Tools & Services			Cost of permanent tools and services used in plugg		1,184.00	CASPER OIL TOOLS		
Electric Logging & Wireline			Cost for logging and perforating		3,614.00	JW Wireline Services		
Water			Cost of water used in plugging		1,454.00	RW Trucking		
Tools & Services			Cost of permanent tools and services used in plugg		998.00	CASPER OIL TOOLS		
Electric Logging & Wireline			Cost for logging and perforating		5,696.00	E&P Wireline Service		
<b>Rigs</b>								
Rig Contractor		Rig Type	Rig No	Rig Supervisor		Rig Start Date	Rig Release Date	
BASIC WELL SERVICE		WSU - Completion Rig	1519	RANDY MOELLER, COMPLETIONS FOREMAN		9/21/2010 07:30	9/24/2010 11:00	
<b>Safety Checks</b>								
Date		Type	Comment					
9/23/2010 06:30		Safety Meeting	Discussed cutting off wellhead, 1" cementing, overhead loads, pinch points, PPE, review JSA.					
<b>Other In Hole</b>								
Description		Run Date	OD (in)	Top (ftKB)	Btm (ftKB)			
Cement Retainer		9/23/2010 18:00	3.593	920.0	922.0			
Cement Retainer		9/22/2010 16:30	3.593	1,130.0	1,132.0			
<b>Casing Strings</b>								
Casing Description		OD (in)	String Grade	Wt (lbs/ft)	Set Depth (ftKB)	Length (ft)		
Surface Casing		8 5/8	J-55	24.00	1,132.0	1,132.00		
Casing Description		OD (in)	String Grade	Wt (lbs/ft)	Set Depth (ftKB)	Length (ft)		
Production Casing		4 1/2	J-55	11.60	5,028.0	5,028.00		

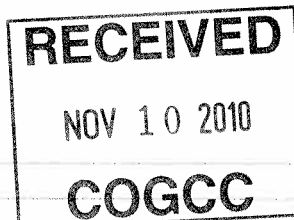


FORT UNION, 2,587

LANCE, 4,931  
FOY, LEWIS /SD/, 6,137

ALMOND /SD/, 8,060

TD, 8,693





# Yates Daily Completion Report

GEHRIG STATE #1

Day # 4

Report # 5.0, Report Date: 9/24/2010

Hole Direction: VERTICAL - ORIGINAL HOLE, 9/24/2010		API/UMI	Surface Legal Location		County	State	Operator
ftKB (MD)	Schematic - Actual	Frm Fina	0508107033	SEC 23/TWN 12N/RNG 94W/UNT E	MOFFAT	COLORADO	YATES PETROLEUM CORPORATION
Bottom Hole Legal Location			N/S Dist (ft)	N/S Ref	E/W Dist	E/W Ref	Gr Elev (ft)
			1,494.0	FNL	1,288.0	FWL	6,089.00
AFE Number		Job Category	Primary Job Type	Department	Total AFE Amount		
101530		P&A	Existing Well	Completions	67,400.00		
<b>Phases</b>							
Phase Type 1				Actual Phase Cost			
COMPLETION				87,248.00			
<b>Daily Operations</b>							
Day No.	Report Start Date	Report End Date	Rig Time (	Formation	Lithology	Daily Report Summary	
4	9/24/2010 06:30	9/24/2010 11:00				P&A Operations	
Operations Next Report Period				Remarks			
				P&A Operations			
Daily Cost Total			Actual Phase Cost		Cum Cost To Date		
50,885.00			87,248.00		87,248.00		
<b>Daily Contacts</b>							
Job Contact				Phone Mobile			
RANDY MOELLER, COMPLETIONS FOREMAN				307-350-9473			
Job Contact				Phone Mobile			
BRETT DEMPSEY, OPER. MANAGER				303-618-4240			
<b>Time Log</b>							
Start Time	End Time	Dur (hrs)	Time Code		Comment		
06:30	06:45	0.25	SAFETY MEETING				
06:45	09:15	2.50	CEMENTING		Rig down floor, nipple down Bop's. Surface casing pressure 0 psi. Cut off wellhead, had to chip out the cement to get the wellhead cut off. Annulus cement at surface. Run 60' of 1" inside the 4-1/2" production casing Mix and pump 25 sacks (5.12 bbls) of 15.8 ppg Class G cement with 1.15 yield, returned 1/2 bbl of cement. Pull 1" tubing out of the 4-1/2" production casing and fill with 15.8 ppg cement. Weld on regulation subsurface abandonment marker. Back fill cellar. Mark the wellbore with the sign. Transferred 154 7/8" rods to Tuboscope in Casper. Transfer Wellhead equipment to Woodgroup Whse in Rock Springs. Transferred 142 joints 2-3/8" 4.7# Eu 8rd YB tubing to Oil country Tubulars in Casper.		
09:15	11:00	1.75	RDMO COMPLETION RIG				
<b>Daily Costs</b>							
Cost Description		Cost Details		Cost	Vendor		
Contract Labor & Services		Cost for contract labor and services		1,177.00	MOELLER CONSULTING		
Rig Expense		Cost of setup, use and removal		3,113.00	BASIC ENERGY SERVICES		
Other P & A costs		Cost other than above for plugging of a well		50.00	United Services		
Tools & Services		Cost of permanent tools and services used in plugg		290.00	WEATHERFORD		
Cementing		Cost of cement and cementing to plug the well		24,895.00	Superior Well Services		
Contract Labor & Services		Cost for contract labor and services		936.00	G & J HOT OILING		
Contract Labor & Services		Cost for contract labor and services		4,683.00	RW Trucking		
Contract Labor & Services		Cost for contract labor and services		134.00	Warrior Welding		
Contract Labor & Services		Cost for contract labor and services		2,897.00	BASIC ENERGY SERVICES		
Contract Labor & Services		Cost for contract labor and services		5,704.00	BASIC ENERGY SERVICES		
Contract Labor & Services		Cost for contract labor and services		1,575.00	BASIC ENERGY SERVICES		
Contract Labor & Services		Cost for contract labor and services		1,594.00	BASIC ENERGY SERVICES		
Contract Labor & Services		Cost for contract labor and services		3,182.00	Davis Construction		
Tools & Services		Cost of permanent tools and services used in plugg		446.00	CASPER OIL TOOLS		
Contract Labor & Services		Cost for contract labor and services		209.00	BASIC ENERGY SERVICES		
<b>Rigs</b>							
Rig Contractor		Rig Type	Rig No.	Rig Supervisor		Rig Start Date	Rig Release Date
BASIC WELL SERVICE		WSU - Completion Rig	1519	RANDY MOELLER, COMPLETIONS FOREMAN		9/21/2010 07:30	9/24/2010 11:00
<b>Safety Checks</b>							
Date		Type	Comment				
9/24/2010 06:30		Safety Meeting	Discussed cutting off wellhead, 1" cementing 4-1/2" production casing, Rigging down completion unit. Review JSA.				
<b>Other In Hole</b>							
Description		Run Date	OD (in)	Top (ftKB)	Btm (ftKB)		
Cement Retainer		9/23/2010 18:00	3.593	920.0	922.0		
Cement Retainer		9/22/2010 16:30	3.593	1,130.0	1,132.0		
<b>Cement Plug/Squeeze</b>							
Type	Cementing Company	Cementing Start Date	Cementing End Date	Evaluation Method			
plug	Superior Well Services	9/24/2010 08:30	9/24/2010 08:40	Returns to Surface			

**RECEIVED**  
 NOV 10 2010  
**COGCC**



# Yates Daily Completion Report

GEHRIG STATE #1

Day # 4

Report # 5.0, Report Date: 9/24/2010

Hole Direction: VERTICAL - ORIGINAL HOLE, 9/24/2010	Stage Number	Top (ftKB)	Bottom (ftKB)	Max Sqz Press (psi)	Cmt Circ/Rev (sac)	Depth tagged (ftKB)
(MD)	10	20.0	80.0		2	
Schematic - Actual	Frm Final	Amount (sacks)	Class	Yield (ft <sup>3</sup> /sack)	Weight (lb/gal)	V (bbl)
		25	G	1.15	15.80	5.1

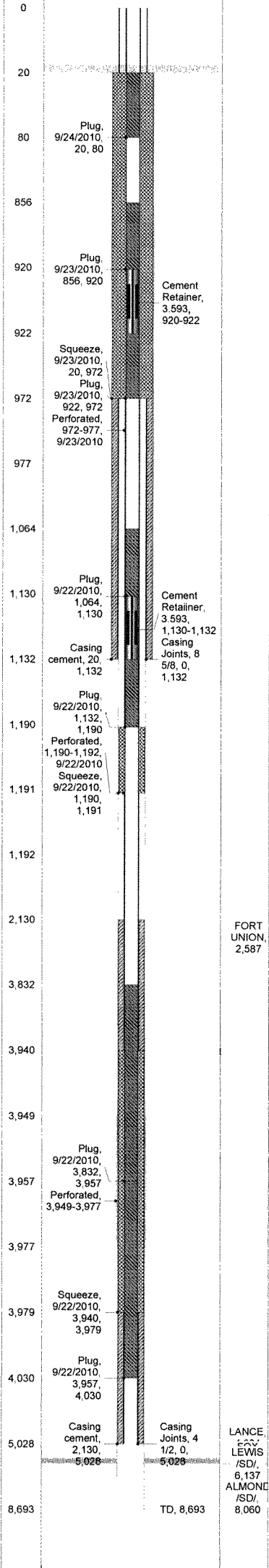
**Casing Strings**

Casing Description	OD (in)	String Grade	Wt (lbs/ft)	Set Depth (ftKB)	Length (ft)
Surface Casing	8 5/8	J-55	24.00	1,132.0	1,132.00
Production Casing	4 1/2	J-55	11.60	5,028.0	5,028.00

**RECEIVED**

NOV 10 2010

**COGCC**





**RECEIVED**  
NOV 10 2010  
**COGCC**

<b>SUPERIOR</b>		<b>JOB SUMMARY</b>		SALES ORDER NUMBER <b>44-000383</b>	TICKET DATE <b>October 18, 2010</b>
REGION <b>Rocky Mountains</b>		NWA / COUNTRY <b>USA</b>		STATE <b>CO</b>	COUNTY <b>MOFFAT</b>
LOCATION WORK PERFORMED OUT OF <b>Rock Springs WYO.</b>		SUPERVISOR / PHONE # <b>MICHAEL RIDL</b>		PSL DEPARTMENT <b>Cementing</b>	
TICKET AMOUNT		COMPANY <b>YATES</b>		CUSTOMER REP / PHONE <b>RANDY MOELLER</b>	
WELL LOCATION		WELL TYPE <b>OLD</b>		API WELL NO. <b>05-081-07033</b>	
LEASE <b>GEHRIG STATE</b>		DEPARTMENT <b>Cementing</b>		JOB TYPE <b>P&amp;A</b>	
Well No. <b>1</b>		SEC/TWPRNG <b>23-12N-94W</b>			

SUPERIOR EMP NAME / (EXPOSURE HOURS)	HRS	HRS	HRS
<b>MICHAEL RIDL</b>	21.0		
<b>DUANE PANNELL</b>	21.0		
<b>TIM KOLKMAN</b>	21.0		

UNIT #S / (R / T MILES)	R / T MILES	R / T MILES	R / T MILES	R / T MILES
<b>1319</b>	<b>160</b>			
<b>3911/3317</b>	<b>160</b>			
<b>0564/3203</b>	<b>160</b>			

Form. Name \_\_\_\_\_ Type: \_\_\_\_\_  
 Form. Thickness \_\_\_\_\_ From \_\_\_\_\_ To \_\_\_\_\_  
 Packer Type \_\_\_\_\_ Set At \_\_\_\_\_  
 Bottom Hole Temp. \_\_\_\_\_ Pressure \_\_\_\_\_  
 Retainer Depth \_\_\_\_\_ Total Depth **3990**

Date	Called Out	On Location	Job Started	Job Completed
	<b>22-Sep-10</b>	<b>22-Sep-10</b>	<b>22-Sep-10</b>	<b>24-Sep-10</b>
Time	<b>0000</b>	<b>0615</b>	<b>0730</b>	<b>0845</b>

Type and Size	Qty	Make
Float Collar		
Float Shoe		
Centralizers		
Top Plug		
Stop Ring		
Bottom Plug		
Insert Float		
Guide Shoe		
Thread Weld		

Casing	New/Used	Weight	Size	Grade	From	To	Max. Allow
Surface	OLD	24.0	8 5/8	J-55	0	1,132	2,360
Intermediate							
Production	OLD	11.6	4 1/2	p-110	t	4,267	6,198
Tubing	NEW	6.5	2 7/8	N-80	0	3,990	8,960
Drill Pipe							
Open Hole							Shots/Ft.
Perforations			0.25		3940	3,979	1
Perforations			0.25		972	977	1
DV Tool							

Mud Type	H2O BASED	Density	9.5	Lb/Gal
Disp. Fluid	WATER	Density	8.34	Lb/Gal
Prop. Type		Size	Lb	
Prop. Type		Gal.	%	
Acid Type		Gal.	%	
Acid Type		Gal.	In	
Surfactant		Gal.	In	
NE Agent		Gal.	In	
Fluid Loss		Gal/Lb	In	
Gelling Agent		Gal/Lb	In	
Fric. Red.		Gal/Lb	In	
Breaker		Gal/Lb	In	
Blocking Agent		Gal/Lb		
Perfpac Balls		Qty.		
Other				
KCL substitute				
Other				
Other				
Other				

Hours On Location		Operating Hours		Description of Job
Date	Hours	Date	Hours	
9/22/10	12.50	9/22/10	2.00	SEE JOB LOG
9/23/10	6.50	9/23/10	1.00	
9/24/10	2.00	9/24/10	0.50	
<b>Total</b>	<b>21.00</b>	<b>Total</b>	<b>3.50</b>	

Ordered	Hydraulic Horsepower	Used
	Avail	
Treating	Average Rates in BPM	Overall
	Disp	
Feet	Cement Left in Pipe	Reason

Stage	Sacks	Cement	Additives	W/Rq.	Yield	Lbs/Gal
1	50	CLASS G	NEAT	5.00	1.15	15.8
2	94	MUD	85%POZ:15%GEL	27.56	4.09	9.5
3	60	CLASS G	2%CACL2	5.00	1.15	15.8
4	235	CLASS G	2%CACL2	5.00	1.15	15.8
<b>Total</b>	<b>439</b>					

Summary		Type: H20	
Circulating	30	Displacement	H20
Breakdown		Maximum	
Lost Returns		Preflush #1	Gal - BBI 10
Cmt Rtrn#Bbl		Preflush #2	Gal - BBI
Average		BBLs cement to Surf.	2.00
Shut in: Instant		Actual TOC	
		Frac. Gradient	
		15 Min.	
		Cement Slurry: Gal - BBI	
		Total Volume Gal - BBI	139.13
			149

THE INFORMATION STATED HEREIN IS CORRECT  
 CUSTOMER REPRESENTATIVE \_\_\_\_\_  
 SIGNATURE \_\_\_\_\_

**RECEIVED**

NOV 10 2010

**COGCC**

<b>SUPERIOR</b>		<b>JOB LOG</b>		TICKET #	44-000383	TICKET DATE	10/18/2010
REGION	Rocky Mountains	NWA / COUNTRY	USA	BDA / STATE	CO	COUNTY	MOFFAT
LOCATION	Rock Springs WYO.	EMPLOYEE NAME	MICHAEL RIDL	DEPARTMENT	Cementing		
TICKET AMOUNT		COMPANY	YATES	CUSTOMER REP / PHONE	RANDY MOELLER		
WELL LOCATION		WELL TYPE	OLD	API/WI #	49-037-24696		
LEASE / WELL #	GEHRIG STATE	DEPARTMENT	Cementing	JOB PURPOSE CODE	P&A	Description	
Well No.	1	SEC /		TWP /	21-25N-107W		RNG

Date if Needed	Time	Rate (BPM)	Volume (BBL/GAL)	Press. (PSI)		Job Description / Remarks
				Tub	Csg	
9/22/2010	0000					CUSTOMER CALLED CREW
	0300					YARD CALL
	0325					PRE CONVOY SAFETY MEETING
	0345					LEFT YARD
	0615					ARRIVED ON LOCATION
	0620					SPOT EQUIPMENT
	0630					PRE RIG UP MEETING
	0710					RIG UP COMPLETE / WAIT ON H2O TRUCK AND RIG
	0725					JSA MEETING W/CO MAN AND RIG CREW
	0735	3	30		140	LOAD HOLE
	0751	3.3	10.2		50	PUMP CMT @ 15.8# (50SKS)
	0803	3.3	"		50	DISPLACEMENT
	0809					SHUTDOWN / RIG PULL UP / WASH UP TO PIT
	0829	3	10		115	LOAD HOLE
	0835	1.5	7		160	SQUEEZE
	0842				400	SHUTDOWN
	0852	4	32.1		640	PUMP MUD @ 9.5#(44SKS)
	0903	4	3.5		700	DISPLACEMENT
	0905					SHUTDOWN / WASH UP / RIG POOH
	0930					RIG DISCOVERS HOLE IN TUBING
	1130					TAG TOP CMT @ 3957FT
	1327	2.1	5		37	LOAD HOLE
	1335	2	1.9		375	PUMP CMT @ 15.8#(10SKS)
	1337	2.5	14.7		450	DISPLACEMENT
	1343					SHUTDOWN / WASH UP / RIG PULL UP
	1405	2	4		350	LOAD HOLE
	1410	3	32.1		255	PUMP MUD @ 9.5#(44SKS)
	1422	4.1	3.5		800	DISPLACEMENT
	1424					SHUTDOWN / WASH UP TO PIT / RIG POOH
	1740	2.2	10.2		330	PUMP CMT @ 15.8#(50SKS)2% CACL2
	1750	2	3.2		800	DISPLACEMENT
	1752					RIG PULL OUT OF RTN / PULL 6 JOINTS
	1805	3	15.2		300	PUMP MUD @ 9.5#(21SKS)
	1810					SHUT DOWN / WASH UP TO PIT / POOH
	2000					CUSTOMER RELEASED CREW
9/23/2010	0730					ARRIVED ON LOCATION
	0800					GAS ON BACKSIDE
	1045					CUSTOMER REQUESTS 250SKS CMT
	1100					CREW LEFT LOC.
	1645					ARRIVED ON LOCATION
	1650					WAIT FOR WIRELINE



**Andrews, David**

---

**From:** Brett Dempsey [BrettD@yatespetroleum.com]  
**Sent:** Tuesday, November 09, 2010 4:46 PM  
**To:** Andrews, David  
**Subject:** RE: modified Gehrig State #1 P&A procedure  
**Attachments:** Gehrig State #1 P&A daily reports.pdf; GEHRIGSTATE#1SUMMARY.pdf

Dave,

They ran the hole with the CBL in preview mode (not recording) going down and stacked out on the previous retainer and cement before they saw any cement on the back side. Since they didn't see anything on the way in, they didn't record anything on the way out. We perf'd right above the previous retainer and cement plug, set another retainer, stung in and circulated cement all the way back up to surface.

Brett Dempsey, P.E.  
Operations Manager



730 17th Street, Ste 320  
Denver, CO 80202  
(303) 572-3550 Office  
(303) 572-3570 Fax  
(303) 618-4240 Cell

17 Layos Dr. / PO Box 1908  
Rock Springs, WY 82902  
(307) 382-4005 Office  
(307) 382-5923 Fax

-----Original Message-----

**From:** Andrews, David [<mailto:David.Andrews@state.co.us>]  
**Sent:** Tuesday, November 09, 2010 3:09 PM  
**To:** Brett Dempsey  
**Subject:** RE: modified Gehrig State #1 P&A procedure

Brett,

See below. I haven't received a response yet.

Thanks,

Dave

---

**From:** Andrews, David  
**Sent:** Wednesday, September 29, 2010 7:22 PM  
**To:** 'Brett Dempsey'  
**Subject:** RE: modified Gehrig State #1 P&A procedure

Brett,

This email confirms my verbal approval to proceed that we discussed on 9/23. Please reply with a PDF copy of the CBL and a cement ticket for the remedial work. Did the job go as planned?

Thanks,

**David D. Andrews, P.E., P.G.**  
Engineering Supervisor - Western Colorado

**State of Colorado**  
**Oil and Gas Conservation Commission**  
707 Wapiti Court, Suite 204  
Rifle, Colorado 81650  
Office Phone: (970) 625-2497 Ext. 1  
Cell Phone: (970) 456-5262  
Fax: (970) 625-5682  
E-mail: [David.Andrews@state.co.us](mailto:David.Andrews@state.co.us)  
Website: <http://www.colorado.gov/cogcc>

**From:** Brett Dempsey [<mailto:BrettD@yatespetroleum.com>]  
**Sent:** Thursday, September 23, 2010 1:25 PM  
**To:** Andrews, David  
**Subject:** modified Gehrig State #1 P&A procedure

David,

This is to follow up on our phone conversation from a few minutes ago. After the squeeze at the surface casing shoe, we are continuing to see pressure at surface on the 8-5/8" x 4-1/2" annulus. We are going to run a bond log to see if we can see the top of cement, then perf at the top of cement (or on top of the cement left on the retainer if we don't see TOC) and attempt to circulate cement all the way back to surface.

Thanks,  
Brett Dempsey