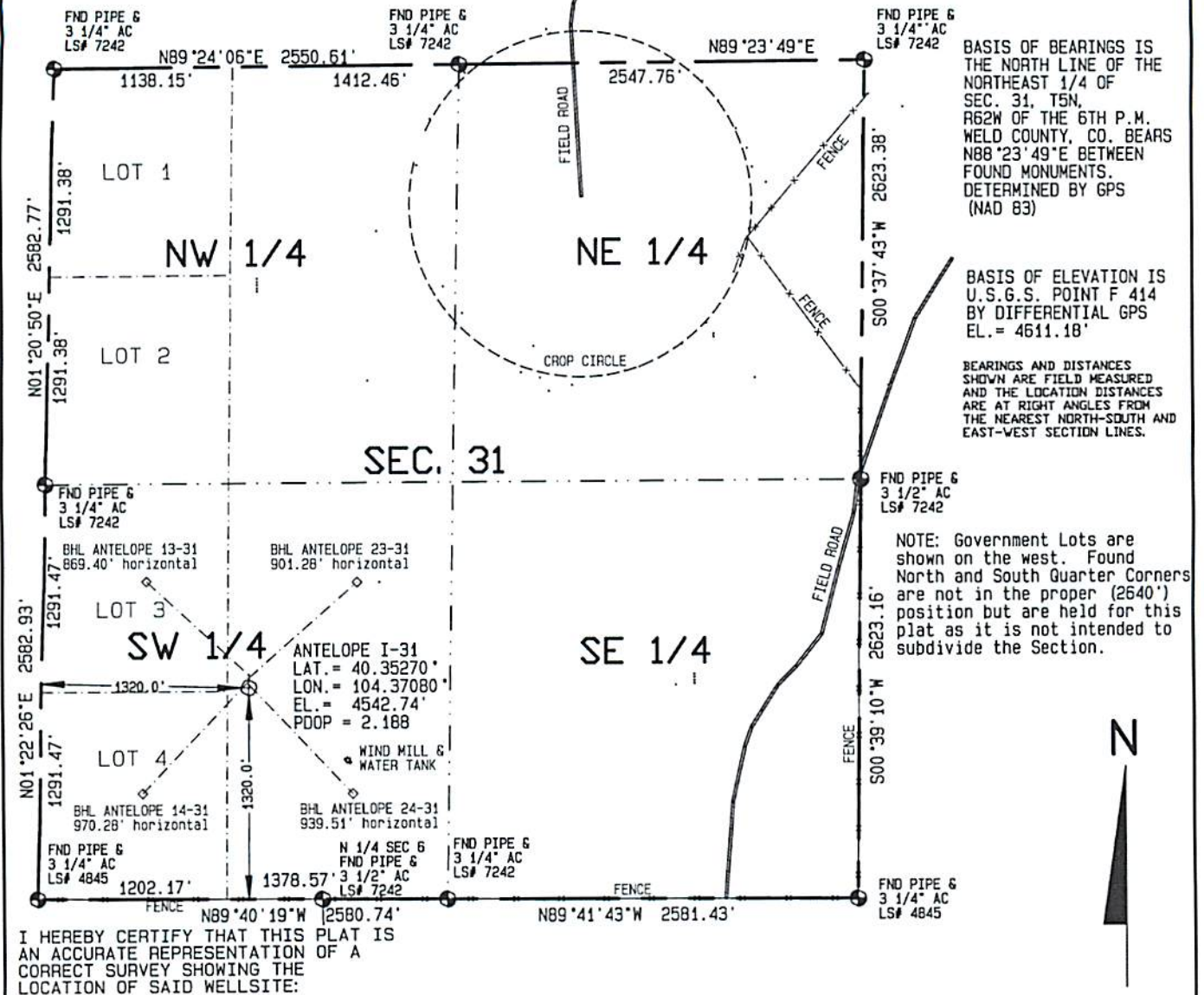


SURFACE HOLE LOCATIONS					
WELL	LAT.	LONG.	EL.	FSL	FWL
13-31	40.35292°	104.37079°	4544.71	1399.9'	1318.1'
23-31	40.35287°	104.37080°	4542.25'	1380.0'	1318.6'
14-31	40.35281°	104.37080°	4540.53'	1360.0'	1319.0'
24-31	40.35276°	104.37080°	4540.92'	1340.1'	1319.5'
I-31	40.35270°	104.37080°	4542.74	1320.0'	1320.0'

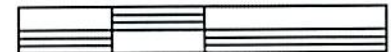
BOTTOM HOLE LOCATIONS					
WELL	LAT.	LONG.	N/S	E/W	
13-31	40.35455°	104.37307°	1980.0' FSL	660.0' FWL	
23-31	40.35448°	104.36834°	1980.0' FSL	1980.0' FWL	
14-31	40.35093°	104.37325°	660.0' FSL	660.0' FWL	
24-31	40.35086°	104.36851°	660.0' FSL	1980.0' FWL	
I-31	40.35270°	104.37080°	1320.0' FSL	1320.0' FWL	

Visible improvements within 400 feet of the location include:
NONE



I HEREBY CERTIFY THAT THIS PLAT IS
AN ACCURATE REPRESENTATION OF A
CORRECT SURVEY SHOWING THE
LOCATION OF SAID WELLSITE:

1000 500 0 1000



Scale 1" = 1000'

Dan Griggs PLS# 38018

CONTRACT SURVEYORS, LTD.
COMPLETE SURVEYING AND GLOBAL POSITIONING

2133 SOUTH BELLAIRE STREET #14
DENVER COLORADO 80222
(303) 756-3695



DATE OF FIELD WORK

SEPTEMBER 16, 2010

DATE OF DRAWING

NOVEMBER 19, 2010

ANTELOPE I-31 PAD SITE 14-31 X8C 1/4/11

NE 1/4 SW 1/4 SEC. 31, T5N, R62W

BONANZA CREEK ENERGY OPERATING COMPANY, LLC

CSL# 10104-54 REVISED

WELD COUNTY, COLORADO