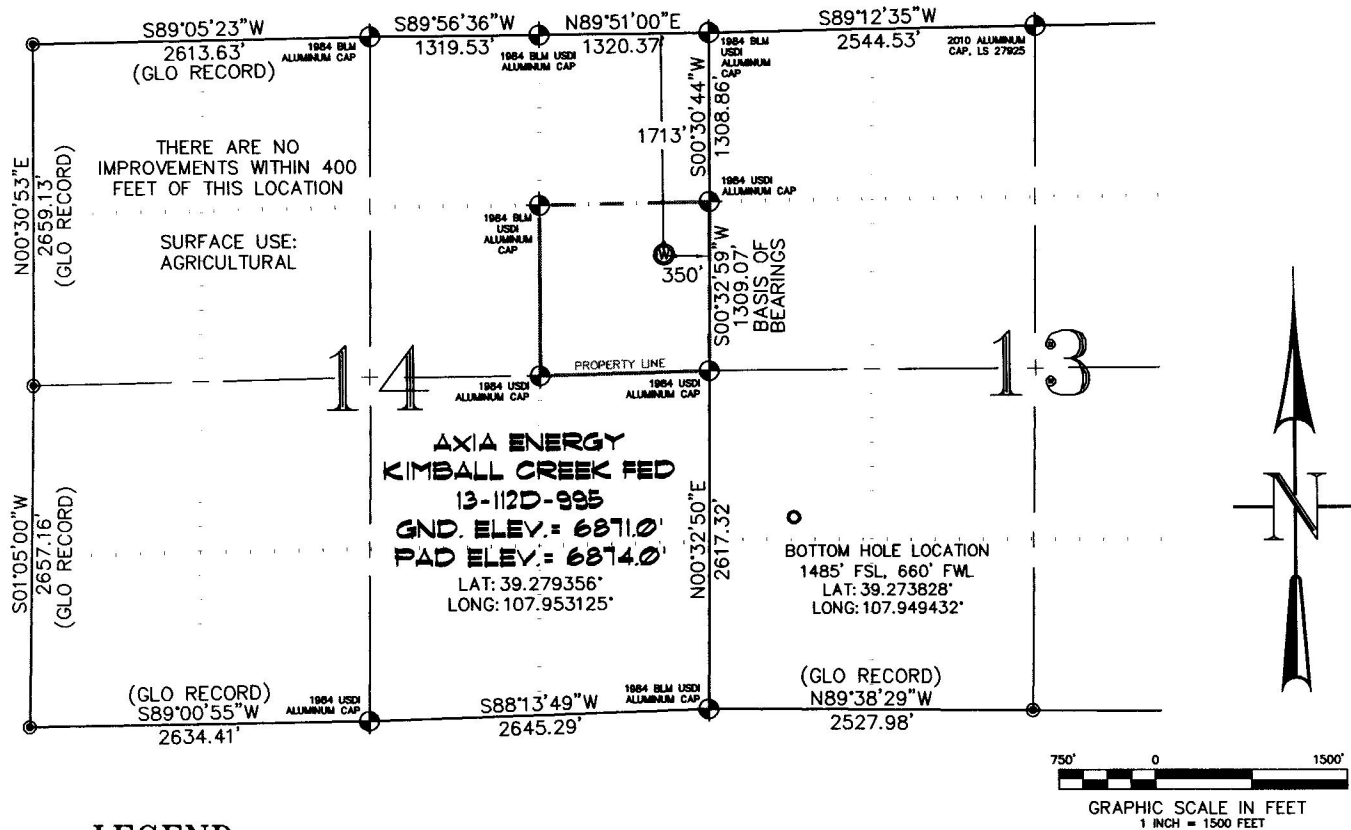


SEC. 14, T. 9 S., R. 95 W. OF THE 6TH P.M. Kimball Creek 14-2D1-995
Pad Location



-LEGEND-

- SECTION CORNER LOCATION BASED ON GLO RECORD INFORMATION
- ⊕ FIELD SURVEYED SECTION CORNER LOCATIONS
- ⊙ FIELD SURVEYED WELL LOCATION
- CALCULATED BOTTOM HOLE LOCATION

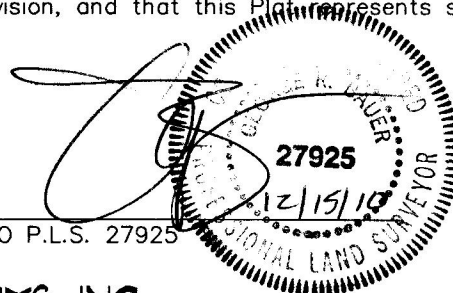
THIS WELL LOCATION PLAT WAS PREPARED FOR AXIA ENERGY TO LOCATE THE KIMBALL CREEK FED 13-112D-995 WELL, 1713 FEET FROM THE NORTH LINE AND 350 FEET FROM THE EAST LINE IN THE SE1/4 NE1/4 OF SECTION 14, T. 9 S., R. 95 W. OF THE 6TH P.M. MESA COUNTY, COLORADO.

REFERENCE NOTES

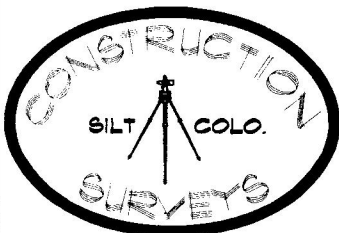
- 1) T. 9 S., R. 95 W., 6TH P.M. GLO PLAT.
- 2) U.S.G.S. QUAD: HAWXHURST CREEK, CO
- 3) ELEVATIONS BASED ON N.A.V.D. 1988
- 4) LATITUDES AND LONGITUDES ARE BASED ON NAD 83, COLORADO CENTRAL ZONE.
- 5) GPS OPERATOR IVAN MARTIN, OBSERVED A PDOP OF 2.4.
- 6) ALL GPS OBSERVATIONS ARE IN COMPLIANCE WITH COGCC RULE NO. 215.
- 7) SURFACE AND BOTTOM HOLE LOCATIONS ARE MEASURED 90° FROM SECTION LINES.

SURVEYOR'S CERTIFICATE

I, George R. Bauer: a Professional Land Surveyor in the State of Colorado do hereby certify that this Survey was made under my direct supervision, and that this Plat represents said Survey.



COLORADO P.L.S. 27925



CONSTRUCTION SURVEYS, INC.
0012 SUNRISE BLVD.
SILT, CO 81652
(970)876-5753

VIEW: 1U

SURVEYED: 07/22/10	SCALE: 1" = 1000'
DRAFTED: 12/14/10	DWG: Axia/KimballCreek142D1995.dwg
CHECKED: 12/14/10	SHEET: 1 of 11