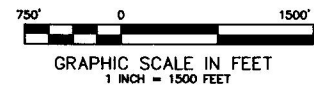
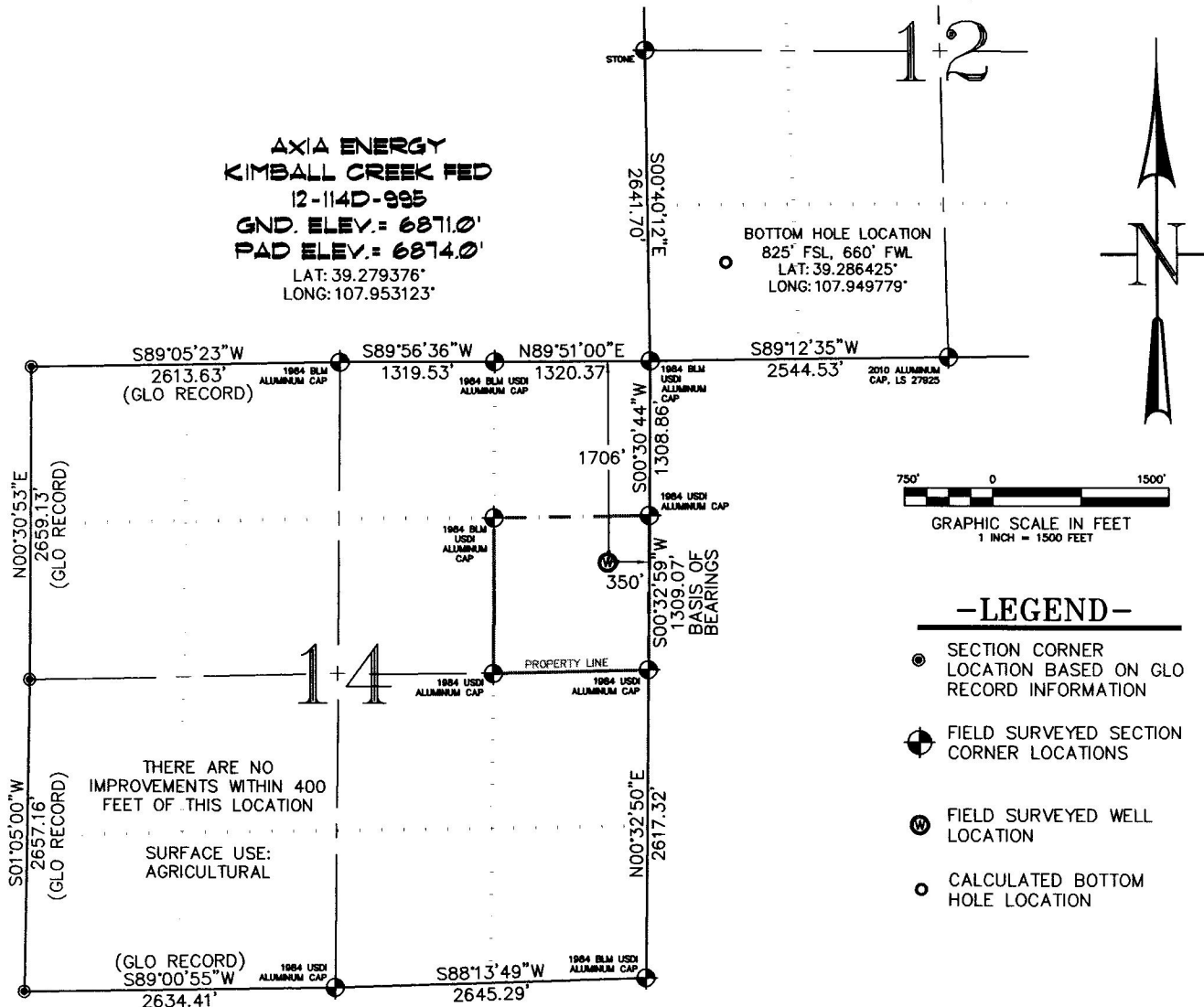


SEC. 14, T. 9 S., R. 95 W. OF THE 6TH P.M. Kimball Creek 14-2D1-995

Pad Location



-LEGEND-

- SECTION CORNER
LOCATION BASED ON GLO
RECORD INFORMATION
- ⊕ FIELD SURVEYED SECTION
CORNER LOCATIONS
- ⊙ FIELD SURVEYED WELL
LOCATION
- CALCULATED BOTTOM
HOLE LOCATION

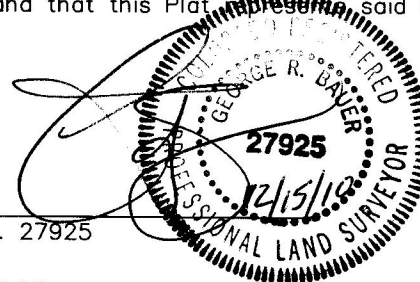
THIS WELL LOCATION PLAT WAS PREPARED FOR AXIA ENERGY TO LOCATE THE KIMBALL CREEK FED 12-114D-995 WELL, 1706 FEET FROM THE NORTH LINE AND 350 FEET FROM THE EAST LINE IN THE SE1/4 NE1/4 OF SECTION 14, T. 9 S., R. 95 W. OF THE 6TH P.M. MESA COUNTY, COLORADO.

REFERENCE NOTES

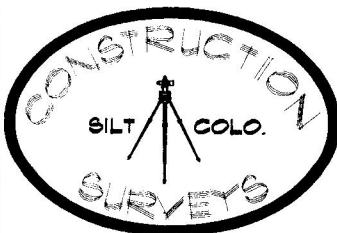
- 1) T. 9 S., R. 95 W., 6TH P.M. GLO PLAT.
- 2) U.S.G.S. QUAD: HAWXHURST CREEK, CO
- 3) ELEVATIONS BASED ON N.A.V.D. 1988
- 4) LATITUDES AND LONGITUDES ARE BASED ON NAD 83, COLORADO CENTRAL ZONE.
- 5) GPS OPERATOR IVAN MARTIN, OBSERVED A PDOP OF 2.4.
- 6) ALL GPS OBSERVATIONS ARE IN COMPLIANCE WITH COGCC RULE NO. 215.
- 7) SURFACE AND BOTTOM HOLE LOCATIONS ARE MEASURED 90° FROM SECTION LINES.

SURVEYOR'S CERTIFICATE

I, George R. Bauer: a Professional Land Surveyor in the State of Colorado do hereby certify that this Survey was made under my direct supervision, and that this Plat, ~~represents~~ said Survey.



COLORADO P.L.S. 27925



CONSTRUCTION SURVEYS, INC.

0012 SUNRISE BLVD.
SILT, CO 81652
(970)876-5753

VIEW: 1T

SURVEYED: 07/22/10	SCALE: 1" = 1500'
DRAFTED: 12/14/10	DWG: Axia/KimballCreek142D1995.dwg
CHECKED: 12/14/10	SHEET: 1 of 11