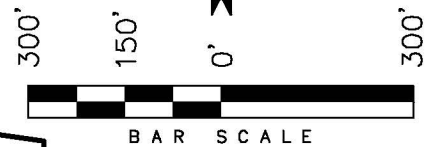
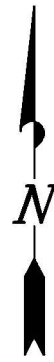


# ENCANA OIL & GAS (USA) INC

## LOCATION DRAWING ADDENDUM TO LEGAL PLATS WELL PAD (J16W) EXPANSION Section 16, T7S, R93W, 6th P.M.



SEC 16

1/4 Section Line

400' Offset  
from Disturbance

NW 1/4  
SE 1/4

Proposed  
Surface  
Disturbance  
Boundary

NE 1/4  
SE 1/4

1/4 Section Line

1/16 Section Line

1/16 Section Line

SW 1/4  
SE 1/4

SE 1/4  
SE 1/4

### Distances from Well Heads

WELL	BUILDING	ABOVE GROUND UTILITY	PUBLIC ROAD	RAILROAD	WELL	BUILDING	ABOVE GROUND UTILITY	PUBLIC ROAD	RAILROAD
16-11B	7,920'	7,920'	8,361'	6.28 MILES	16-16B	7,862'	7,862'	8,350'	6.28 MILES
16-10A	7,908'	7,908'	8,353'	6.28 MILES	16-14D2	7,860'	7,860'	8,358'	6.28 MILES
16-11D	7,905'	7,905'	8,360'	6.28 MILES	16-16C	7,846'	7,846'	8,350'	6.28 MILES
16-8D	7,893'	7,893'	8,352'	6.28 MILES	16-14D3	7,845'	7,845'	8,357'	6.28 MILES
16-14A	7,890'	7,890'	8,360'	6.28 MILES	16-16C2	7,831'	7,831'	8,349'	6.28 MILES
16-9C	7,877'	7,877'	8,351'	6.28 MILES	21-3A	7,830'	7,830'	8,356'	6.28 MILES
16-14D	7,875'	7,875'	8,359'	6.28 MILES	21-1B	7,815'	7,815'	8,348'	6.28 MILES

#### SURFACE USE

#### NOTE:

Surface use of the well site is grazing. Vegetation consists mainly of Sage Brush & Native Grasses.

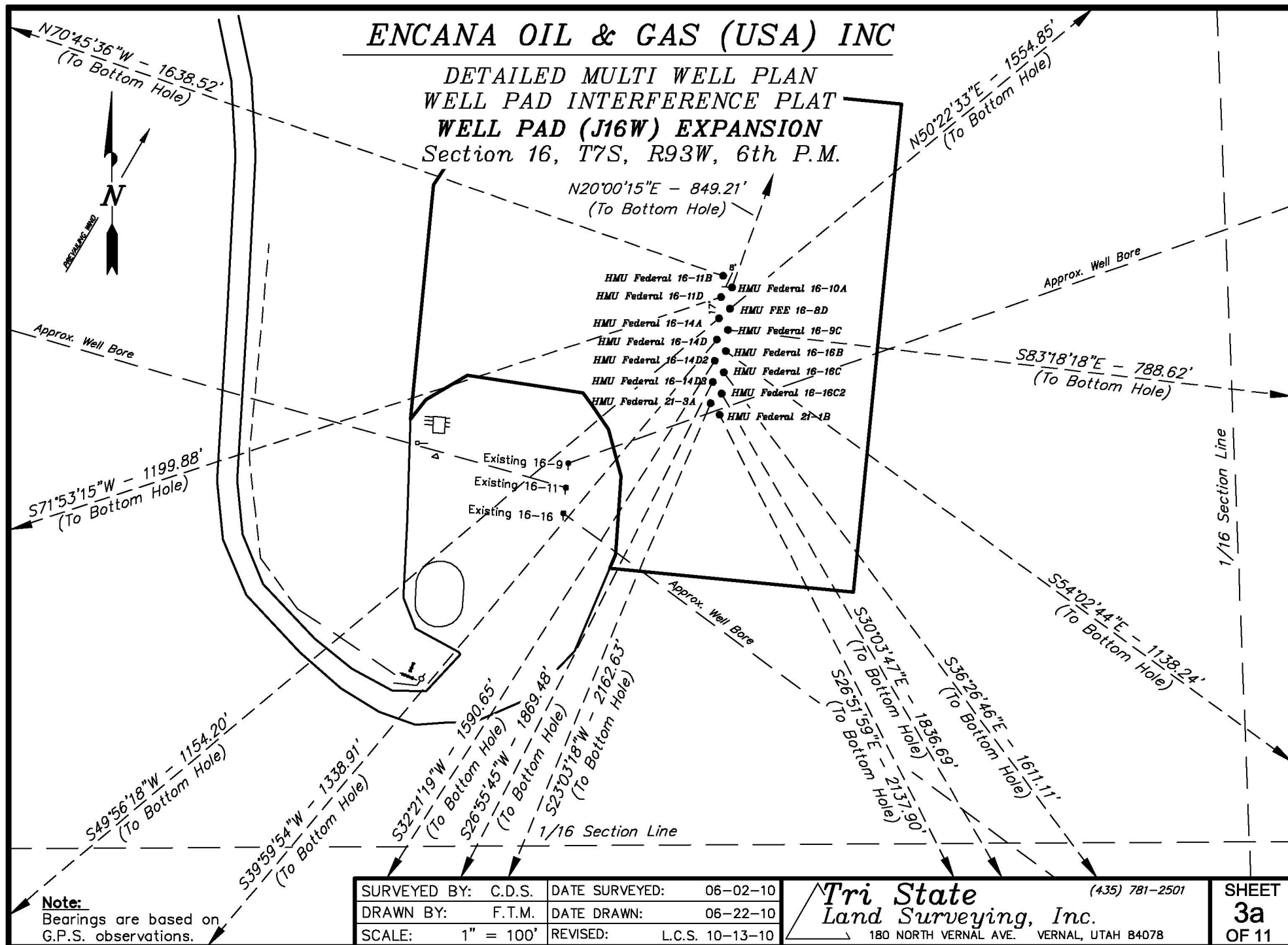
SURVEYED BY: C.D.S. DATE SURVEYED: 06-02-10  
DRAWN BY: F.T.M. DATE DRAWN: 06-21-10  
SCALE: 1" = 300' REVISED: L.C.S. 10-13-10

**Tri State** (435) 781-2501  
Land Surveying, Inc.  
180 NORTH VERNAL AVE. VERNAL, UTAH 84078

SHEET  
20  
OF 11

# ENCANA OIL & GAS (USA) INC

## DETAILED MULTI WELL PLAN WELL PAD INTERFERENCE PLAT WELL PAD (J16W) EXPANSION Section 16, T7S, R93W, 6th P.M.



**Note:**  
Bearings are based on  
G.P.S. observations.

SURVEYED BY: C.D.S.	DATE SURVEYED: 06-02-10
DRAWN BY: F.T.M.	DATE DRAWN: 06-22-10
SCALE: 1" = 100'	REVISED: L.C.S. 10-13-10

**Tri State**  
Land Surveying, Inc.  
180 NORTH VERNAL AVE. VERNAL, UTAH 84078  
(435) 781-2501

**SHEET**  
**3a**  
**OF 11**

# ENCANA OIL & GAS (USA) INC

## DETAILED MULTI WELL PLAN WELL PAD INTERFERENCE PLAT WELL PAD (J16W) EXPANSION

Section 16, T7S, R93W, 6th P.M.

### TOP HOLE FOOTAGES

HMU Federal 16-11B (J16W)  
1745' FSL & 1664' FEL

HMU Federal 16-10A (J16W)  
1736' FSL & 1657' FEL

HMU Federal 16-11D (J16W)  
1728' FSL & 1666' FEL

HMU FEE 16-8D (J16W)  
1719' FSL & 1660' FEL

HMU Federal 16-14A (J16W)  
1711' FSL & 1669' FEL

HMU Federal 16-9C (J16W)  
1702' FSL & 1662' FEL

HMU Federal 16-14D (J16W)  
1694' FSL & 1671' FEL

### TOP HOLE FOOTAGES

HMU Federal 16-16B (J16W)  
1685' FSL & 1665' FEL

HMU Federal 16-14D2 (J16W)  
1678' FSL & 1674' FEL

HMU Federal 16-16C (J16W)  
1668' FSL & 1667' FEL

HMU Federal 16-14D3 (J16W)  
1661' FSL & 1677' FEL

HMU Federal 16-16C2 (J16W)  
1651' FSL & 1670' FEL

HMU Federal 21-3A (J16W)  
1644' FSL & 1679' FEL

HMU Federal 21-1B (J16W)  
1634' FSL & 1673' FEL

### BOTTOM HOLE FOOTAGES

HMU Federal 16-11B (J16W)  
2305' FSL & 1920' FWL

HMU Federal 16-10A (J16W)  
2530' FSL & 1325' FEL

HMU Federal 16-11D (J16W)  
1370' FSL & 2300' FWL

HMU FEE 16-8D (J16W)  
2695' FSL & 420' FEL

HMU Federal 16-14A (J16W)  
980' FSL & 2545' FWL

HMU Federal 16-9C (J16W)  
1600' FSL & 885' FEL

HMU Federal 16-14D (J16W)  
680' FSL & 2585' FEL

### BOTTOM HOLE FOOTAGES

HMU Federal 16-16B (J16W)  
1005' FSL & 780' FEL

HMU Federal 16-14D2 (J16W)  
345' FSL & 2595' FEL

HMU Federal 16-16C (J16W)  
360' FSL & 780' FEL

HMU Federal 16-14D3 (J16W)  
5' FSL & 2610' FEL

HMU Federal 16-16C2 (J16W)  
50' FSL & 835' FEL

HMU Federal 21-3A (J16W)  
335' FNL & 2545' FWL

HMU Federal 21-1B (J16W)  
285' FNL & 795' FEL

### RELATIVE COORDINATES - From top hole to bottom hole

WELL	NORTH	EAST	WELL	NORTH	EAST
16-11B	540'	-1547'	16-16B	-668'	921'
16-10A	798'	291'	16-14D2	-1344'	-851'
16-11D	-373'	-1140'	16-16C	-1296'	957'
16-8D	992'	1198'	16-14D3	-1667'	-847'
16-14A	-743'	-883'	16-16C2	-1590'	920'
16-9C	-92'	783'	21-3A	-1990'	-847'
16-14D	-1026'	-861'	21-1B	-1907'	966'

### LATITUDE & LONGITUDE - Surface position of Wells (NAD 83)

WELL	LATITUDE	LONGITUDE	WELL	LATITUDE	LONGITUDE
16-11B	39.443239°	107.775670°	16-16C	39.443028°	107.775668°
16-10A	39.443214°	107.775645°	16-14D3	39.443006°	107.775700°
16-11D	39.443193°	107.775676°	16-16C2	39.442981°	107.775674°
16-8D	39.443167°	107.775651°	21-3A	39.442960°	107.775705°
16-14A	39.443146°	107.775682°	21-1B	39.442935°	107.775680°
16-9C	39.443119°	107.775656°	Exist. 16-9	39° 26' 34.19"	107° 46' 33.98"
16-14D	39.443100°	107.775688°	Exist. 16-11	39° 26' 33.99"	107° 46' 34.01"
16-16B	39.443074°	107.775662°	Exist. 16-16	39° 26' 33.79"	107° 46' 34.03"
16-14D2	39.443053°	107.775693°			

### LATITUDE & LONGITUDE - Bottom hole position of Wells (NAD 83)

WELL	LATITUDE	LONGITUDE	WELL	LATITUDE	LONGITUDE
16-11B	39.444721°	107.781144°	16-16B	39.441240°	107.772401°
16-10A	39.445403°	107.774617°	16-14D2	39.439366°	107.778707°
16-11D	39.442169°	107.779714°	16-16C	39.439469°	107.772281°
16-8D	39.445889°	107.771411°	16-14D3	39.438433°	107.778697°
16-14A	39.441108°	107.778809°	16-16C2	39.438618°	107.772418°
16-9C	39.442869°	107.772883°	21-3A	39.437499°	107.778704°
16-14D	39.440285°	107.778734°	21-1B	39.437700°	107.772261°

SURVEYED BY: C.D.S. DATE SURVEYED: 06-02-10  
 DRAWN BY: F.T.M. DATE DRAWN: 06-22-10  
 SCALE: 1" = 100' REVISED: L.C.S. 10-13-10

**Tri State**  
 Land Surveying, Inc.  
 180 NORTH VERNAL AVE. VERNAL, UTAH 84078

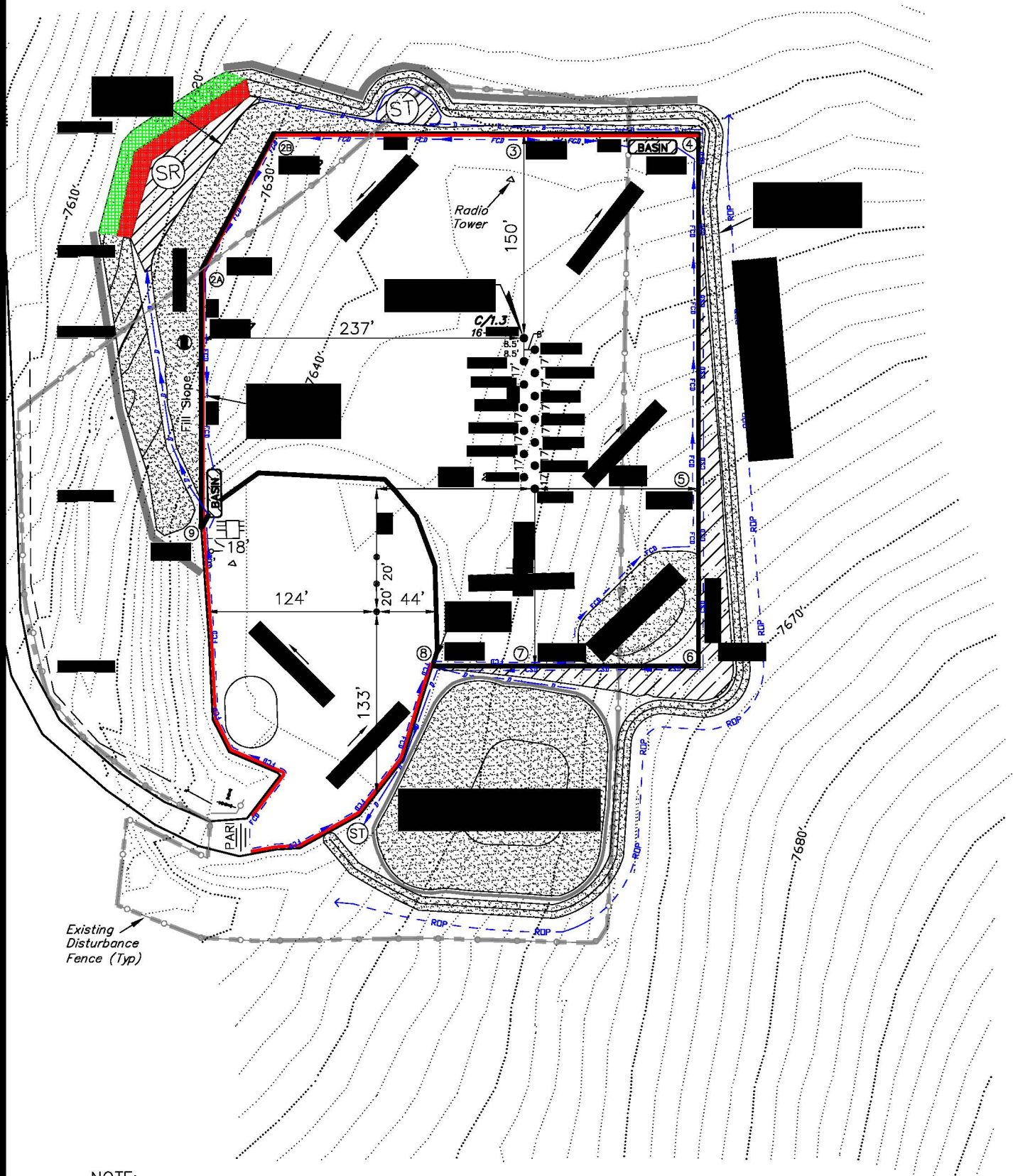
(435) 781-2501

SHEET  
**3b**  
 OF 11

ENCANA OIL & GAS (USA) INC

CONSTRUCTION LAYOUT DRAWING  
CUT SHEET

WELL PAD (J16W) EXPANSION  
Section 16, T7S, R93W, 6th P.M.



NOTE:  
The topsoil & excess material area is calculated as being mounds containing 30,620 cubic yards of dirt (a 15% fluff factor is included). The mound areas are calculated with push slopes of 2.5:1 & fall slopes of 2.5:1.

- NOTES:
- (1) Slope Track and/or Terrace All Slopes and Piles
  - (2) Erosion Control & Seed Topsoil Stockpile
  - (3) Erosion Control & Seed Outside Slopes of Stockpiles
  - (4) Slope away from Substructure Areas 1% to 3% to Flow Control Ditch on Entire Pad
  - (5) When Possible the Cut and Fill Slopes Directly Behind the Proposed Production Equipment Should be Reclaimed with 3:1 Slopes and Topsoil Spread During Pad Construction.
  - (6) BMP Selection and Position may Change Depending on Actual Conditions Encountered During the Construction Process.
  - (7) All CMP's Shall have Inlet and Outlet Protection.
  - (8) All BMP's to be constructed to Encana Oil & Gas (USA) Inc. BMP Manual's Specifications

LEGEND:

- PARI = PAD/ACCESS ROAD INTERFACE  
SR = SEDIMENT RESERVOIR  
ST = SEDIMENT TRAP  
R.O.P. = RUN-ON PROTECTION  
PERIMETER CONTROL (WATTLES)  
CDM = CHECK DAM  
FCD = FLOW CONTROL DITCH  
ECB = EROSION CONTROL BLANKET  
D = FILL DIVERSION TO SEDIMENT TRAP  
CSD = CUT SLOPE DIVERSION (BERM TOE OF CUT SLOPE)  
VGB = VEGETATION BUFFER (UNDISTURBED LAND INSIDE PC)  
SEED, ECB & FLEX  
LEVEL SPREADER

SURVEYED BY: C.D.S.	DATE SURVEYED: 06-02-10
DRAWN BY: F.T.M.	DATE DRAWN: 06-21-10
SCALE: 1" = 100'	REVISED: L.C.S. 10-13-10

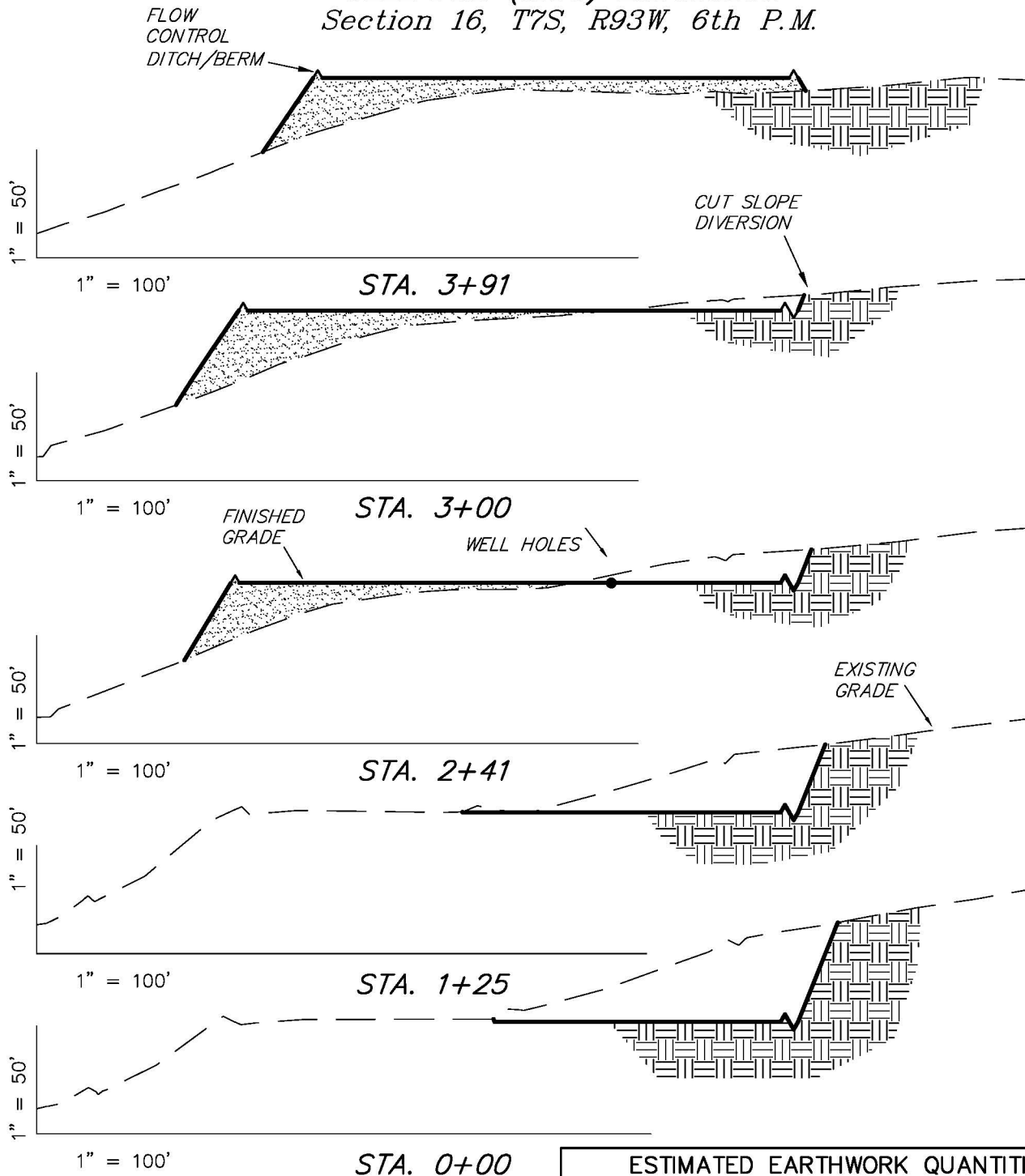
Tri State  
Land Surveying, Inc.  
180 NORTH VERNAL AVE. VERNAL, UTAH 84078  
(435) 781-2501

SHEET  
4  
OF 11

# ENCANA OIL & GAS (USA) INC

## CONSTRUCTION LAYOUT DRAWING CROSS SECTIONS

### WELL PAD (J16W) EXPANSION Section 16, T7S, R93W, 6th P.M.



NOTE:  
UNLESS OTHERWISE NOTED  
CUT SLOPES ARE AT 1:1  
FILL SLOPES ARE AT 1.5:1

#### ESTIMATED EARTHWORK QUANTITIES (No Shrink or swell adjustments have been used) (Expressed in Cubic Yards)

ITEM	CUT	FILL	EXCESS	6" TOPSOIL
PAD	16,920	13,570	3,350	Topsoil is not included in Pad Cut
TOTALS	16,920	13,570	3,350	1,560

SURVEYED BY: C.D.S. DATE SURVEYED: 06-02-10  
DRAWN BY: F.T.M. DATE DRAWN: 06-21-10  
SCALE: 1" = 100' REVISED: L.C.S. 10-13-10

**Tri State**  
Land Surveying, Inc.  
180 NORTH VERNAL AVE. VERNAL, UTAH 84078  
(435) 781-2501

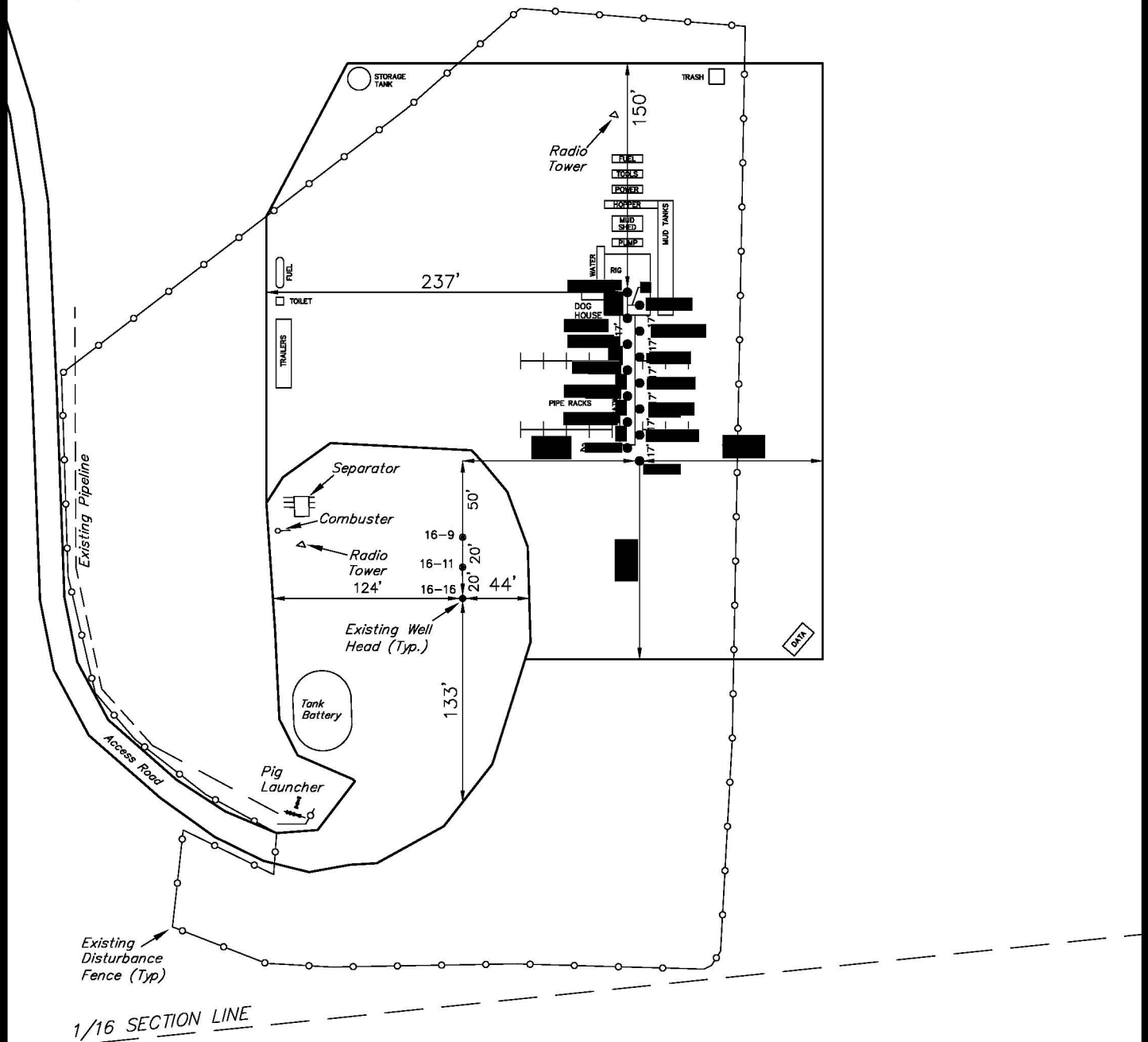
SHEET  
**5**  
OF 11

# ENCANA OIL & GAS (USA) INC

## TYPICAL RIG LAYOUT

### WELL PAD (J16W) EXPANSION

Section 16, T7S, R93W, 6th P.M.



SURVEYED BY: C.D.S.	DATE SURVEYED: 06-02-10
DRAWN BY: F.T.M.	DATE DRAWN: 06-21-10
SCALE: 1" = 100'	REVISED: L.C.S. 10-13-10

**Tri State**  
Land Surveying, Inc.  
180 NORTH VERNAL AVE. VERNAL, UTAH 84078  
(435) 781-2501

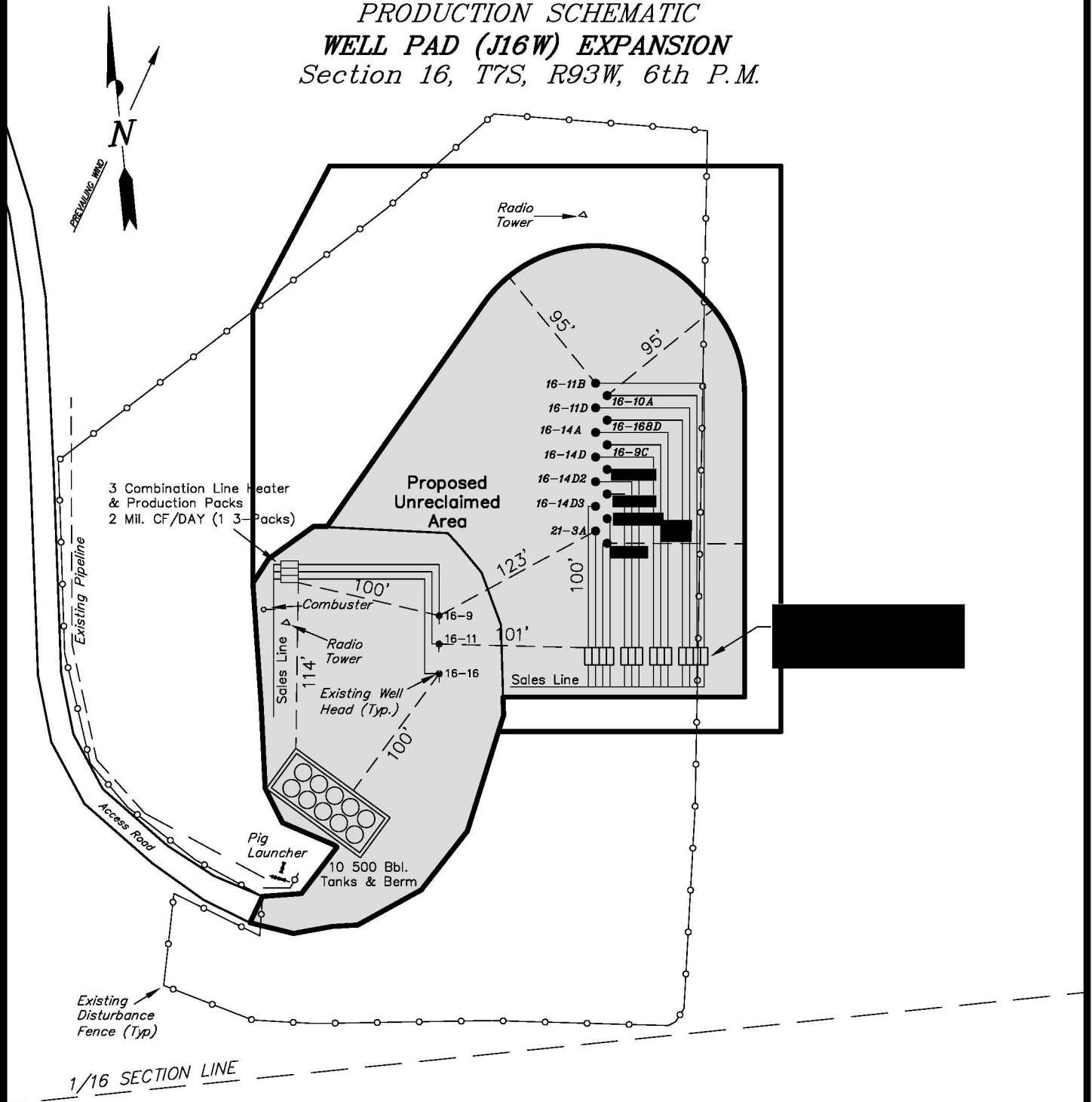
SHEET  
**6**  
OF 11

# ENCANA OIL & GAS (USA) INC

## PRODUCTION SCHEMATIC

### WELL PAD (J16W) EXPANSION

Section 16, T7S, R93W, 6th P.M.



#### Notes:

1. Reclaimed area to include seeding of approved vegetation and sufficient storm water management system.
2. Reclaimed Pad to have storm water Management BMP's Per Encana Oil & Gas (USA) Inc. BMP Manual.
3. Actual Equipment Layout and Reclaimed Pad Surface Area May Change do to Production Requirements or Site Conditions.

#### DISTURBED AREA:

TOTAL DISTURBED AREA = 7.59 ACRES

TOTAL RECLAIMED AREA = 5.32 ACRES

UNRECLAIMED AREA = 2.27 ACRES

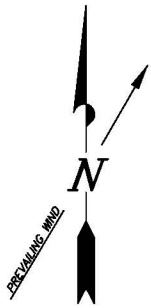
SURVEYED BY: C.D.S.	DATE SURVEYED: 06-02-10
DRAWN BY: F.T.M.	DATE DRAWN: 06-21-10
SCALE: 1" = 100'	REVISED: L.C.S. 10-13-10

**Tri State**  
Land Surveying, Inc.  
(435) 781-2501  
180 NORTH VERNAL AVE. VERNAL, UTAH 84078

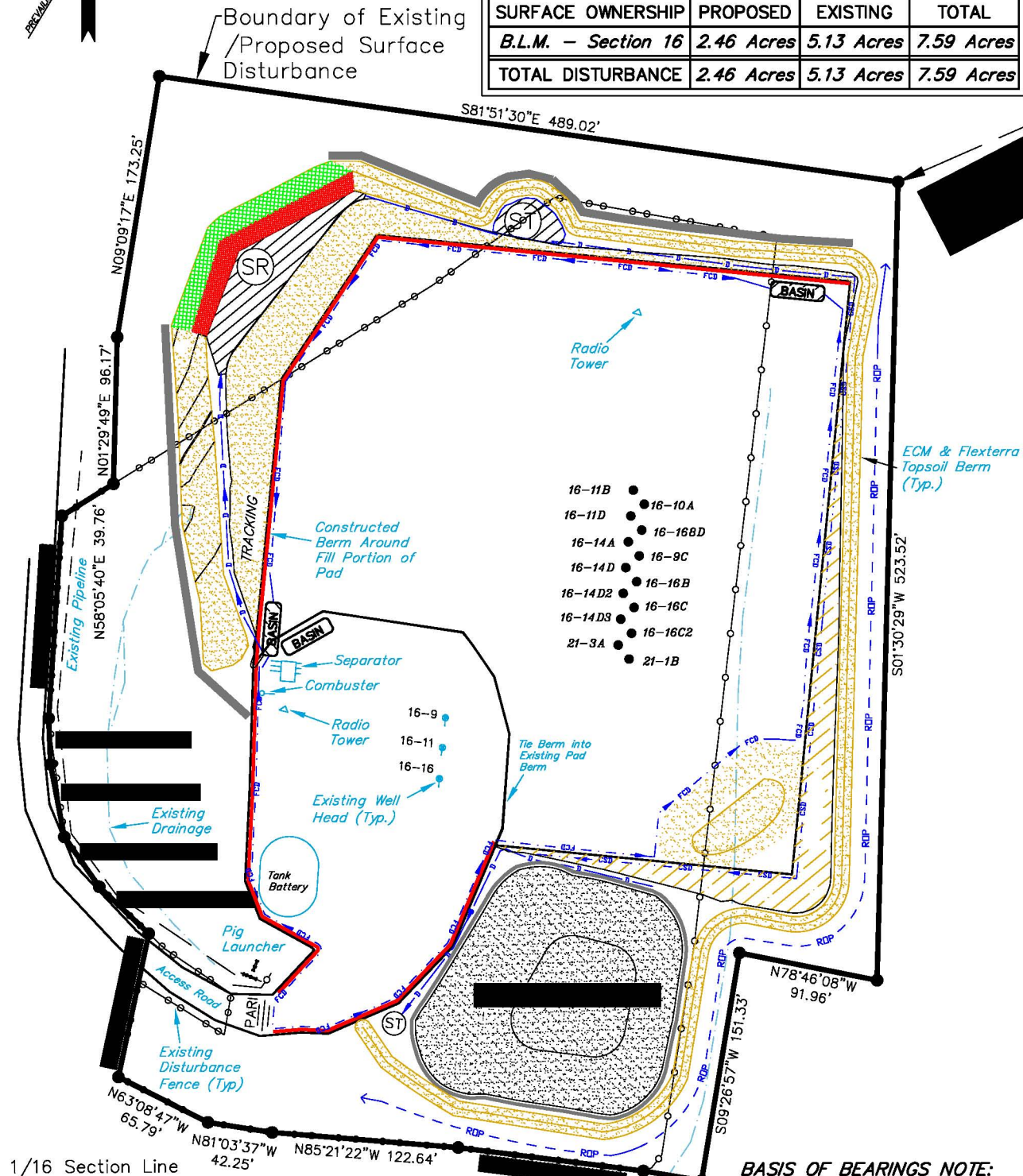
SHEET  
7  
OF 11

# ENCANA OIL & GAS (USA) INC

## SURFACE DISTURBANCE AREA WELL PAD (J16W) EXPANSION Section 16, T7S, R93W, 6th P.M.



Surface Disturbance Area			
SURFACE OWNERSHIP	PROPOSED	EXISTING	TOTAL
B.L.M. - Section 16	2.46 Acres	5.13 Acres	7.59 Acres
TOTAL DISTURBANCE	2.46 Acres	5.13 Acres	7.59 Acres



### BASIS OF BEARINGS NOTE:

Basis of Bearings is the East line of the NE 1/4 of Section 16, T7S, R93W, 6th P.M. which is taken from Global Positioning Satellite observations to bear N00°27'17"E a measured distance of 2713.32'.

SURVEYED BY: C.D.S. DATE SURVEYED: 06-02-10  
DRAWN BY: F.T.M. DATE DRAWN: 06-21-10  
SCALE: 1" = 100' REVISED: L.C.S. 10-13-10

**Tri State**  
Land Surveying, Inc.  
180 NORTH VERNAL AVE. VERNAL, UTAH 84078  
(435) 781-2501

SHEET  
8  
OF 11