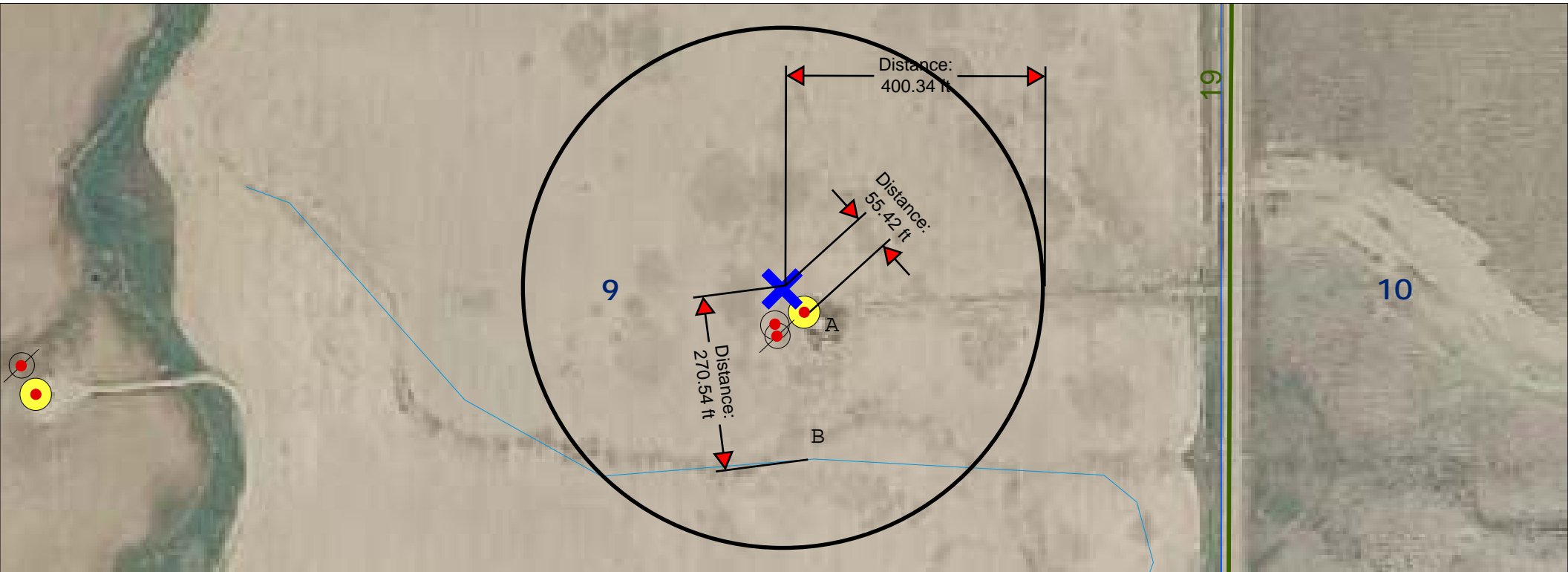
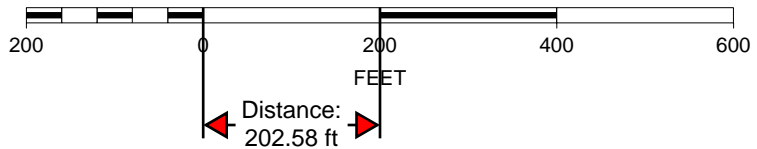


A. Existing well (Rocky Mountain Fuel CO C #1; API# 05-123-07479) 55.42 ft SE;

B. Bull Ditch 270.54ft S;



SCALE 1 : 2,609



K. P. Kauffman Company, Inc.

Well location map; visible improvements in 400'

NRC #9-9-15H

NESE section 9-T1N-R67W

Weld Co., Colorado

