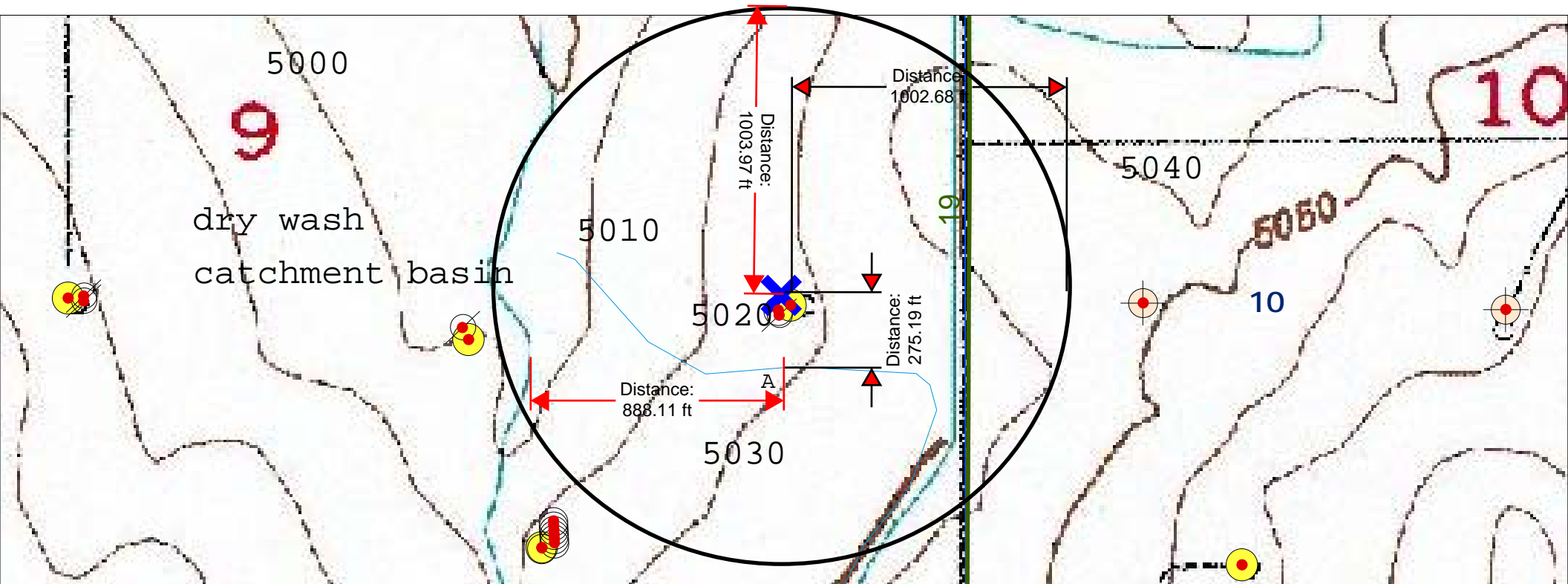
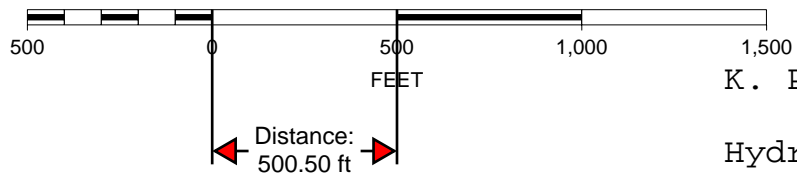


No Water Wells within 1000' radius of location

Surface Water within 1000' radius of location; A. Bull Ditch bearing 275.19' S; Dry Wash catchment basin 888' W



SCALE 1 : 6,228



K. P. Kauffman Company, Inc.

Hydrology map; indicating surface waters and water wells

NRC #9-9-15H

NESE section 9-T1N-R67W

Weld Co., Colorado