
SAMSON RESOURCES CORP - EBUS

**Schofield Auto 31X-5-3
IGNACIO / BLANCO
La Plata County , Colorado**

Cement Surface Casing
26-Oct-2010

Job Site Documents



Cementing Job Summary

The Road to Excellence Starts with Safety

Sold To #: 345114			Ship To #: 345114			Quote #:			Sales Order #: 7729718							
Customer: SAMSON RESOURCES CORP - EBUS						Customer Rep: Seidel, Frank										
Well Name: Schofield Auto				Well #: 31X-5-3			API/UWI #: 05-067-09227									
Field: IGNACIO / BLANCO		City (SAP): TULSA		County/Parish: La Plata				State: Colorado								
Legal Description: Section 5 Township 32N Range 7W																
Contractor: AZTEC WELL SERVICE				Rig/Platform Name/Num: AWS 507												
Job Purpose: Cement Surface Casing																
Well Type: Development Well				Job Type: Cement Surface Casing												
Sales Person: SCOTT, KYLE				Srvc Supervisor: WOOD, BRANDON			MBU ID Emp #: 412753									
Job Personnel																
HES Emp Name		Exp Hrs	Emp #	HES Emp Name		Exp Hrs	Emp #	HES Emp Name		Exp Hrs	Emp #					
BRYANT, CHARLES Walker		6	461552	GONZALES, MATTHEW Lee		6	479805	MARTIN, EHLER Dean		6	458474					
WOOD, BRANDON M		6	412753													
Equipment																
HES Unit #		Distance-1 way		HES Unit #		Distance-1 way		HES Unit #		Distance-1 way						
10565341		51 mile		10804563		51 mile		10948692		51 mile						
Job Hours																
Date		On Location Hours		Operating Hours		Date		On Location Hours		Operating Hours						
TOTAL						Total is the sum of each column separately										
Job							Job Times									
Formation Name									Date		Time		Time Zone			
Formation Depth (MD)		Top		Bottom				Called Out		26 - Oct - 2010		04:00		MST		
Form Type				BHST				On Location		26 - Oct - 2010		08:00		MST		
Job depth MD		365.9 ft		Job Depth TVD		319.3 ft		Job Started		26 - Oct - 2010		12:00		MST		
Water Depth				Wk Ht Above Floor		4. ft		Job Completed		26 - Oct - 2010		12:40		MST		
Perforation Depth (MD)		From		To				Departed Loc		26 - Oct - 2010		14:00		MST		
Well Data																
Description		New / Used	Max pressure psig	Size in	ID in	Weight lbm/ft	Thread		Grade	Top MD ft	Bottom MD ft	Top TVD ft	Bottom TVD ft			
12-1/4" Open Hole					12.25					.	350.					
8-5/8" Surface Casing		Unknow n		8.625	7.921	32.				.	350.					
Sales/Rental/3 rd Party (HES)																
Description									Qty	Qty uom	Depth		Supplier			
PLUG,CMTG,TOP,8 5/8,HWE,7.20 MIN/8.09 MA									1	EA						
Tools and Accessories																
Type		Size	Qty	Make	Depth	Type		Size	Qty	Make	Depth	Type		Size	Qty	Make
Guide Shoe						Packer						Top Plug				
Float Shoe						Bridge Plug						Bottom Plug				
Float Collar						Retainer						SSR plug set				
Insert Float												Plug Container				
Stage Tool												Centralizers				
Miscellaneous Materials																
Gelling Agt			Conc		Surfactant			Conc		Acid Type			Qty		Conc	%
Treatment Fld			Conc		Inhibitor			Conc		Sand Type			Size		Qty	

Fluid Data									
Stage/Plug #: 1									
Fluid #	Stage Type	Fluid Name	Qty	Qty uom	Mixing Density lbm/gal	Yield ft ³ /sk	Mix Fluid Gal/sk	Rate bbl/min	Total Mix Fluid Gal/sk
1	Water Spacer		20.00	bbl	8.33	.0	.0	.0	
2	Surface Cement	CMT - PREMIUM - CLASS G, 94 LB SK (100003685)	270.0	sacks	15.8	1.17	5.0		5.0
	94 lbm	CMT - PREMIUM - CLASS G REG OR TYPE V, BULK (100003685)							
	2 %	CALCIUM CHLORIDE - HI TEST PELLET (100005053)							
	0.125 lbm	POLY-E-FLAKE (101216940)							
	4.998 Gal	FRESH WATER							
3	Displacement		20.30	bbl	8.33	.0	.0	.0	
Calculated Values		Pressures		Volumes					
Displacement	20.3	Shut In: Instant		Lost Returns	NO	Cement Slurry	56.3	Pad	
Top Of Cement	SURFACE	5 Min		Cement Returns	15	Actual Displacement	20.5	Treatment	
Frac Gradient		15 Min		Spacers	20	Load and Breakdown		Total Job	
Rates									
Circulating	2	Mixing	4	Displacement	4	Avg. Job	3		
Cement Left In Pipe	Amount	46.57 ft	Reason	Shoe Joint					
Frac Ring # 1 @	ID		Frac ring # 2 @	ID		Frac Ring # 3 @	ID		Frac Ring # 4 @
The Information Stated Herein Is Correct				Customer Representative Signature					

The Road to Excellence Starts with Safety

Sold To #: 345114	Ship To #: 345114	Quote #:	Sales Order #: 7729718
Customer: SAMSON RESOURCES CORP - EBUS		Customer Rep: Seidel, Frank	
Well Name: Schofield Auto		Well #: 31X-5-3	API/UWI #: 05-067-09227
Field: IGNACIO / BLANCO	City (SAP): TULSA	County/Parish: La Plata	State: Colorado
Legal Description: Section 5 Township 32N Range 7W			
Lat: N 0 deg. OR N 0 deg. 0 min. 0 secs.		Long: E 0 deg. OR E 0 deg. 0 min. 0 secs.	
Contractor: AZTEC WELL SERVICE		Rig/Platform Name/Num: AWS 507	
Job Purpose: Cement Surface Casing			Ticket Amount:
Well Type: Development Well		Job Type: Cement Surface Casing	
Sales Person: SCOTT, KYLE		Srv Supervisor: WOOD, BRANDON	MBU ID Emp #: 412753

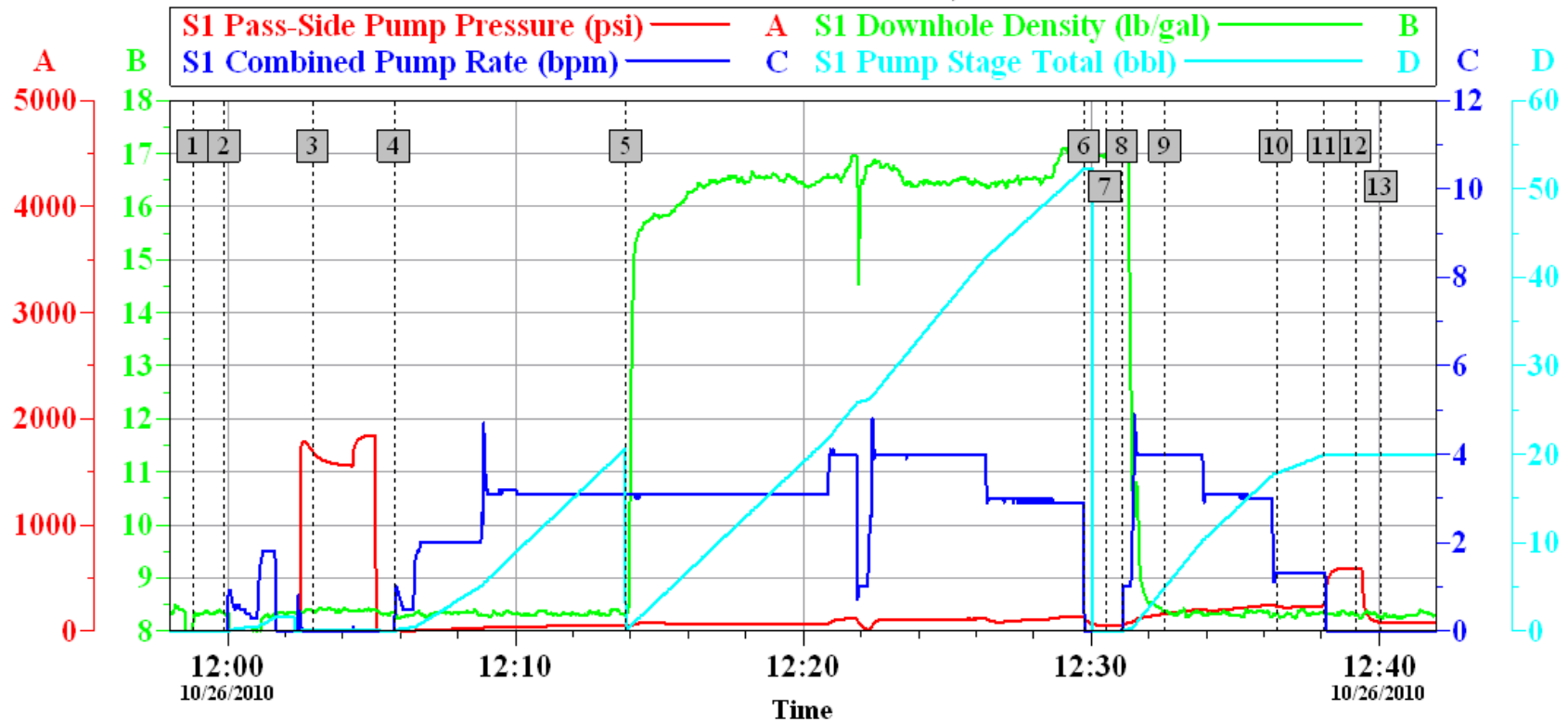
Activity Description	Date/Time	Cht #	Rate bbl/min	Volume bbl		Pressure psig		Comments
				Stage	Total	Tubing	Casing	
Call Out	10/26/2010 04:10							
Depart Yard Safety Meeting	10/26/2010 06:15							SAFETY MEETING INVOLVING THE CMT CREW
Crew Leave Yard	10/26/2010 06:20							
Arrive At Loc	10/26/2010 08:00							1- F-450 10829466, 1- RED TIGER PUMP TRUCK 11223557, 1- 660 BULK TRUCK TRAILERS 10025104, 10,398
Assessment Of Location Safety Meeting	10/26/2010 08:05							ASSESSMENT OF LOCATION INVOLVING THE CMT CREW
Pre-Rig Up Safety Meeting	10/26/2010 08:55							SAFETY MEETING INVOLVING THE ENTIRE CMT/ RIG CREW
Rig-Up Equipment	10/26/2010 09:00							
Pre-Job Safety Meeting	10/26/2010 10:00							SAFETY MEETING INVOLVING EVERYONE ON LOCATION
Start Job	10/26/2010 12:00							TD 375 FT, TP 365.9 FT, FC 319.33 FT, SJ 46.57 FT, 8 5/8 24 # J-55 CSG, 12 1/4 OH, CALCULATED 114 PSI TO LIFT PIPE OUT OF HOLE
Test Lines	10/26/2010 12:03		0.5		1.5		1800.0	PRESSURE TEST GOOD TO 1800 PSI

Activity Description	Date/Time	Cht #	Rate bbl/min	Volume bbl		Pressure psig		Comments
				Stage	Total	Tubing	Casing	
Pump Spacer 1	10/26/2010 12:06		2		20		50.0	PUMP 20 BBL FRESH WATER SPACER
Pump Cement	10/26/2010 12:14		4		56.3		70.0	270 SKS, 1.17 YLD, 5.0 GAL H2O/SK, 56.3 BBLS @ 15.8 #, 32.1 BBLS H2O REQ
Shutdown	10/26/2010 12:30							SHUT DOWN TO DROP TOP PLUG
Drop Top Plug	10/26/2010 12:30							TATTLE TAIL INDICATED PLUG LEFT THE PLUG CONTAINER
Pump Displacement	10/26/2010 12:31		4		20.3		130.0	CALCULATED 20.3 BBLS DISPLACEMENT, ACTUALLY PUMPED 20.5 BBLS ON TANKS MARK TO MARK TO BUMP PLUG
Cement Returns to Surface	10/26/2010 12:32				15			CALCULATED SHOULD CIRCULATE 26.4 BBLS CEMENT RETURNS TO SURFACE, ACTUALLY CIRCULATED 15 BBLS
Slow Rate	10/26/2010 12:36		2				223.0	SLOW RATE 1 BBL MIN THE LAST 3 BBLS OF DISPLACEMENT TO LAND THE PLUG
Bump Plug	10/26/2010 12:38		2				238.0	CALCULATED 124 PSI DIFFERENTIAL WHEN PLUG LANDS, PLUG BUMPED @ 238 PSI
Check Floats	10/26/2010 12:39						591.0	PRESSURED UP TO 591 PSI, RELEASED PRESSURE FLOATS HELD, FLOWED BACK .2 BBLS
End Job	10/26/2010 12:40							GOOD CIRCULATION THROUGHOUT THE ENTIRE CMT JOB, NO PIPE MOVEMENT,
Pre-Rig Down Safety Meeting	10/26/2010 12:45							SAFETY MEETING INVOLVING THE CMT/RIG CREW
Rig-Down Equipment	10/26/2010 12:50							
Safety Meeting - Departing Location	10/26/2010 13:55							SAFETY MEETING INVOLVING THE CMT CREW

Activity Description	Date/Time	Cht #	Rate bbl/ min	Volume bbl		Pressure psig		Comments
				Stage	Total	Tubing	Casing	
Depart Location for Service Center or Other Site	10/26/2010 14:00							THANK YOU FOR USING HALLIBURTON, BRANDON WOOD AND CREW

SAMSON

SCHOFIELD AUTO # 31X-5-3, SURFACE



Global Event Log

1 Starting Job	11:58:49	2 Start Job	11:59:54	3 Test Lines	12:02:58
4 Pump Spacer	12:05:48	5 Pump Cement	12:13:51	6 Shutdown	12:29:46
7 Drop Plug	12:30:30	8 Pump Displacement	12:31:05	9 Cement Returns to Surface	12:32:35
10 Slow Rate	12:36:26	11 Bump Plug	12:38:06	12 Check Floats	12:39:12
13 End Job	12:40:05				

Customer: SAMSON
Well Description: SCHOFIELD AUTO
Customer Rep: LARRY CANDELARIA

Job Date: 26-Oct-2010
Job type: SURFACE
Service Supervisor: BRANDON WOOD

Sales Order #: 7729714
ADC Used: YES
Operator/ Pump: CHARLES BRYANT, 11223557

OptiCem v6.3.4
26-Oct-10 13:10