



Denver Division- Colorado

DJ - Hereford Ranch

Tree Creek #13-34H

Tree Creek #13-34H

Original Wellbore

Plan: APD Directional Plan

Standard Planning Report

29 November, 2010



Database:	EDM 2003.21 Single User Db	Local Co-ordinate Reference:	Well Tree Creek #13-34H
Company:	Denver Division- Colorado	TVD Reference:	WELL @ 5316.0ft (Original Well Elev)
Project:	DJ - Hereford Ranch	MD Reference:	WELL @ 5316.0ft (Original Well Elev)
Site:	Tree Creek #13-34H	North Reference:	True
Well:	Tree Creek #13-34H	Survey Calculation Method:	Minimum Curvature
Wellbore:	Original Wellbore		
Design:	APD Directional Plan		

Project	DJ - Hereford Ranch, Weld County		
Map System:	US State Plane 1927 (Exact solution)	System Datum:	Mean Sea Level
Geo Datum:	NAD 1927 (NADCON CONUS)		
Map Zone:	Colorado North 501		

Site		Tree Creek #13-34H			
Site Position:		Northing:	529,693.38 ft	Latitude:	40° 47' 3.300 N
From:	Lat/Long	Easting:	2,238,100.05 ft	Longitude:	104° 38' 24.830 W
Position Uncertainty:	0.0 ft	Slot Radius:	"	Grid Convergence:	0.56 °

Well	Tree Creek #13-34H					
Well Position	+N/-S	0.0 ft	Northing:	529,693.38 ft	Latitude:	40° 47' 3.300 N
	+E/-W	0.0 ft	Easting:	2,238,100.05 ft	Longitude:	104° 38' 24.830 W
Position Uncertainty		0.0 ft	Wellhead Elevation:	ft	Ground Level:	5,294.0 ft

Wellbore	Original Wellbore				
Magnetics	Model Name	Sample Date	Declination (°)	Dip Angle (°)	Field Strength (nT)
	IGRF200510	2009/12/31	8.99	67.44	53,513

Design	APD Directional Plan			
Audit Notes:				
Version:	Phase:	PROTOTYPE	Tie On Depth:	0.0
Vertical Section:	Depth From (TVD)	+N/-S	+E/-W	Direction
	(ft)	(ft)	(ft)	(°)
	0.0	0.0	0.0	332.86

Plan Sections										
Measured Depth (ft)	Inclination (°)	Azimuth (°)	Vertical Depth (ft)	+N/-S (ft)	+E/-W (ft)	Dogleg Rate (°/100ft)	Build Rate (°/100ft)	Turn Rate (°/100ft)	TFO (°)	Target
0.0	0.00	0.00	0.0	0.0	0.0	0.00	0.00	0.00	0.00	
7,231.5	0.00	0.00	7,231.5	0.0	0.0	0.00	0.00	0.00	0.00	
7,981.5	90.00	332.86	7,709.0	424.9	-217.8	12.00	12.00	0.00	332.86	
12,087.2	90.00	332.86	7,709.0	4,078.6	-2,090.5	0.00	0.00	0.00	0.00	Tree Creek #13-34H I

Database:	EDM 2003.21 Single User Db	Local Co-ordinate Reference:	Well Tree Creek #13-34H
Company:	Denver Division- Colorado	TVD Reference:	WELL @ 5316.0ft (Original Well Elev)
Project:	DJ - Hereford Ranch	MD Reference:	WELL @ 5316.0ft (Original Well Elev)
Site:	Tree Creek #13-34H	North Reference:	True
Well:	Tree Creek #13-34H	Survey Calculation Method:	Minimum Curvature
Wellbore:	Original Wellbore		
Design:	APD Directional Plan		

Planned Survey									
Measured Depth (ft)	Inclination (°)	Azimuth (°)	Vertical Depth (ft)	+N/-S (ft)	+E/-W (ft)	Vertical Section (ft)	Dogleg Rate (°/100ft)	Build Rate (°/100ft)	Turn Rate (°/100ft)
0.0	0.00	0.00	0.0	0.0	0.0	0.0	0.00	0.00	0.00
100.0	0.00	0.00	100.0	0.0	0.0	0.0	0.00	0.00	0.00
200.0	0.00	0.00	200.0	0.0	0.0	0.0	0.00	0.00	0.00
300.0	0.00	0.00	300.0	0.0	0.0	0.0	0.00	0.00	0.00
400.0	0.00	0.00	400.0	0.0	0.0	0.0	0.00	0.00	0.00
500.0	0.00	0.00	500.0	0.0	0.0	0.0	0.00	0.00	0.00
600.0	0.00	0.00	600.0	0.0	0.0	0.0	0.00	0.00	0.00
700.0	0.00	0.00	700.0	0.0	0.0	0.0	0.00	0.00	0.00
800.0	0.00	0.00	800.0	0.0	0.0	0.0	0.00	0.00	0.00
895.0	0.00	0.00	895.0	0.0	0.0	0.0	0.00	0.00	0.00
Fox Hills									
900.0	0.00	0.00	900.0	0.0	0.0	0.0	0.00	0.00	0.00
1,000.0	0.00	0.00	1,000.0	0.0	0.0	0.0	0.00	0.00	0.00
1,100.0	0.00	0.00	1,100.0	0.0	0.0	0.0	0.00	0.00	0.00
1,200.0	0.00	0.00	1,200.0	0.0	0.0	0.0	0.00	0.00	0.00
1,225.0	0.00	0.00	1,225.0	0.0	0.0	0.0	0.00	0.00	0.00
Pierre Shale									
1,295.0	0.00	0.00	1,295.0	0.0	0.0	0.0	0.00	0.00	0.00
9 5/8"									
1,300.0	0.00	0.00	1,300.0	0.0	0.0	0.0	0.00	0.00	0.00
1,400.0	0.00	0.00	1,400.0	0.0	0.0	0.0	0.00	0.00	0.00
1,500.0	0.00	0.00	1,500.0	0.0	0.0	0.0	0.00	0.00	0.00
1,600.0	0.00	0.00	1,600.0	0.0	0.0	0.0	0.00	0.00	0.00
1,700.0	0.00	0.00	1,700.0	0.0	0.0	0.0	0.00	0.00	0.00
1,800.0	0.00	0.00	1,800.0	0.0	0.0	0.0	0.00	0.00	0.00
1,900.0	0.00	0.00	1,900.0	0.0	0.0	0.0	0.00	0.00	0.00
2,000.0	0.00	0.00	2,000.0	0.0	0.0	0.0	0.00	0.00	0.00
2,100.0	0.00	0.00	2,100.0	0.0	0.0	0.0	0.00	0.00	0.00
2,200.0	0.00	0.00	2,200.0	0.0	0.0	0.0	0.00	0.00	0.00
2,300.0	0.00	0.00	2,300.0	0.0	0.0	0.0	0.00	0.00	0.00
2,400.0	0.00	0.00	2,400.0	0.0	0.0	0.0	0.00	0.00	0.00
2,500.0	0.00	0.00	2,500.0	0.0	0.0	0.0	0.00	0.00	0.00
2,600.0	0.00	0.00	2,600.0	0.0	0.0	0.0	0.00	0.00	0.00
2,700.0	0.00	0.00	2,700.0	0.0	0.0	0.0	0.00	0.00	0.00
2,800.0	0.00	0.00	2,800.0	0.0	0.0	0.0	0.00	0.00	0.00
2,900.0	0.00	0.00	2,900.0	0.0	0.0	0.0	0.00	0.00	0.00
3,000.0	0.00	0.00	3,000.0	0.0	0.0	0.0	0.00	0.00	0.00
3,100.0	0.00	0.00	3,100.0	0.0	0.0	0.0	0.00	0.00	0.00
3,200.0	0.00	0.00	3,200.0	0.0	0.0	0.0	0.00	0.00	0.00
3,300.0	0.00	0.00	3,300.0	0.0	0.0	0.0	0.00	0.00	0.00
3,400.0	0.00	0.00	3,400.0	0.0	0.0	0.0	0.00	0.00	0.00
3,500.0	0.00	0.00	3,500.0	0.0	0.0	0.0	0.00	0.00	0.00
3,600.0	0.00	0.00	3,600.0	0.0	0.0	0.0	0.00	0.00	0.00
3,700.0	0.00	0.00	3,700.0	0.0	0.0	0.0	0.00	0.00	0.00
3,800.0	0.00	0.00	3,800.0	0.0	0.0	0.0	0.00	0.00	0.00
3,900.0	0.00	0.00	3,900.0	0.0	0.0	0.0	0.00	0.00	0.00
4,000.0	0.00	0.00	4,000.0	0.0	0.0	0.0	0.00	0.00	0.00
4,100.0	0.00	0.00	4,100.0	0.0	0.0	0.0	0.00	0.00	0.00
4,200.0	0.00	0.00	4,200.0	0.0	0.0	0.0	0.00	0.00	0.00
4,245.0	0.00	0.00	4,245.0	0.0	0.0	0.0	0.00	0.00	0.00
Richard Sand									
4,300.0	0.00	0.00	4,300.0	0.0	0.0	0.0	0.00	0.00	0.00
4,385.0	0.00	0.00	4,385.0	0.0	0.0	0.0	0.00	0.00	0.00
Hygiene									

Database:	EDM 2003.21 Single User Db	Local Co-ordinate Reference:	Well Tree Creek #13-34H
Company:	Denver Division- Colorado	TVD Reference:	WELL @ 5316.0ft (Original Well Elev)
Project:	DJ - Hereford Ranch	MD Reference:	WELL @ 5316.0ft (Original Well Elev)
Site:	Tree Creek #13-34H	North Reference:	True
Well:	Tree Creek #13-34H	Survey Calculation Method:	Minimum Curvature
Wellbore:	Original Wellbore		
Design:	APD Directional Plan		

Planned Survey									
Measured Depth (ft)	Inclination (°)	Azimuth (°)	Vertical Depth (ft)	+N/-S (ft)	+E/-W (ft)	Vertical Section (ft)	Dogleg Rate (°/100ft)	Build Rate (°/100ft)	Turn Rate (°/100ft)
4,400.0	0.00	0.00	4,400.0	0.0	0.0	0.0	0.00	0.00	0.00
4,500.0	0.00	0.00	4,500.0	0.0	0.0	0.0	0.00	0.00	0.00
4,600.0	0.00	0.00	4,600.0	0.0	0.0	0.0	0.00	0.00	0.00
4,700.0	0.00	0.00	4,700.0	0.0	0.0	0.0	0.00	0.00	0.00
4,800.0	0.00	0.00	4,800.0	0.0	0.0	0.0	0.00	0.00	0.00
4,900.0	0.00	0.00	4,900.0	0.0	0.0	0.0	0.00	0.00	0.00
5,000.0	0.00	0.00	5,000.0	0.0	0.0	0.0	0.00	0.00	0.00
5,100.0	0.00	0.00	5,100.0	0.0	0.0	0.0	0.00	0.00	0.00
5,200.0	0.00	0.00	5,200.0	0.0	0.0	0.0	0.00	0.00	0.00
5,300.0	0.00	0.00	5,300.0	0.0	0.0	0.0	0.00	0.00	0.00
5,400.0	0.00	0.00	5,400.0	0.0	0.0	0.0	0.00	0.00	0.00
5,500.0	0.00	0.00	5,500.0	0.0	0.0	0.0	0.00	0.00	0.00
5,600.0	0.00	0.00	5,600.0	0.0	0.0	0.0	0.00	0.00	0.00
5,700.0	0.00	0.00	5,700.0	0.0	0.0	0.0	0.00	0.00	0.00
5,800.0	0.00	0.00	5,800.0	0.0	0.0	0.0	0.00	0.00	0.00
5,900.0	0.00	0.00	5,900.0	0.0	0.0	0.0	0.00	0.00	0.00
6,000.0	0.00	0.00	6,000.0	0.0	0.0	0.0	0.00	0.00	0.00
6,100.0	0.00	0.00	6,100.0	0.0	0.0	0.0	0.00	0.00	0.00
6,200.0	0.00	0.00	6,200.0	0.0	0.0	0.0	0.00	0.00	0.00
6,300.0	0.00	0.00	6,300.0	0.0	0.0	0.0	0.00	0.00	0.00
6,400.0	0.00	0.00	6,400.0	0.0	0.0	0.0	0.00	0.00	0.00
6,500.0	0.00	0.00	6,500.0	0.0	0.0	0.0	0.00	0.00	0.00
6,600.0	0.00	0.00	6,600.0	0.0	0.0	0.0	0.00	0.00	0.00
6,700.0	0.00	0.00	6,700.0	0.0	0.0	0.0	0.00	0.00	0.00
6,800.0	0.00	0.00	6,800.0	0.0	0.0	0.0	0.00	0.00	0.00
6,900.0	0.00	0.00	6,900.0	0.0	0.0	0.0	0.00	0.00	0.00
7,000.0	0.00	0.00	7,000.0	0.0	0.0	0.0	0.00	0.00	0.00
7,100.0	0.00	0.00	7,100.0	0.0	0.0	0.0	0.00	0.00	0.00
7,200.0	0.00	0.00	7,200.0	0.0	0.0	0.0	0.00	0.00	0.00
7,231.5	0.00	0.00	7,231.5	0.0	0.0	0.0	0.00	0.00	0.00
7,250.0	2.22	332.86	7,250.0	0.3	-0.2	0.4	12.00	12.00	0.00
7,275.0	5.22	332.86	7,274.9	1.8	-0.9	2.0	12.00	12.00	0.00
7,300.0	8.22	332.86	7,299.8	4.4	-2.2	4.9	12.00	12.00	0.00
7,325.0	11.22	332.86	7,324.4	8.1	-4.2	9.1	12.00	12.00	0.00
7,350.0	14.22	332.86	7,348.8	13.0	-6.7	14.6	12.00	12.00	0.00
7,375.0	17.22	332.86	7,372.8	19.0	-9.8	21.4	12.00	12.00	0.00
7,400.0	20.22	332.86	7,396.5	26.2	-13.4	29.4	12.00	12.00	0.00
7,425.0	23.22	332.86	7,419.7	34.4	-17.6	38.7	12.00	12.00	0.00
7,450.0	26.22	332.86	7,442.5	43.7	-22.4	49.1	12.00	12.00	0.00
7,475.0	29.22	332.86	7,464.6	54.1	-27.7	60.8	12.00	12.00	0.00
7,500.0	32.22	332.86	7,486.1	65.4	-33.5	73.5	12.00	12.00	0.00
7,525.0	35.22	332.86	7,506.9	77.8	-39.9	87.4	12.00	12.00	0.00
7,550.0	38.22	332.86	7,526.9	91.1	-46.7	102.3	12.00	12.00	0.00
7,575.0	41.22	332.86	7,546.1	105.3	-54.0	118.3	12.00	12.00	0.00
7,586.9	42.65	332.86	7,555.0	112.4	-57.6	126.3	12.00	12.00	0.00
Sharon Springs									
7,600.0	44.22	332.86	7,564.5	120.4	-61.7	135.3	12.00	12.00	0.00
7,625.0	47.22	332.86	7,581.9	136.3	-69.9	153.2	12.00	12.00	0.00
7,650.0	50.22	332.86	7,598.4	153.0	-78.4	172.0	12.00	12.00	0.00
7,660.4	51.47	332.86	7,605.0	160.2	-82.1	180.0	12.00	12.00	0.00
Niobrara									
7,675.0	53.22	332.86	7,613.9	170.5	-87.4	191.6	12.00	12.00	0.00
7,700.0	56.22	332.86	7,628.4	188.7	-96.7	212.0	12.00	12.00	0.00

Database:	EDM 2003.21 Single User Db	Local Co-ordinate Reference:	Well Tree Creek #13-34H
Company:	Denver Division- Colorado	TVD Reference:	WELL @ 5316.0ft (Original Well Elev)
Project:	DJ - Hereford Ranch	MD Reference:	WELL @ 5316.0ft (Original Well Elev)
Site:	Tree Creek #13-34H	North Reference:	True
Well:	Tree Creek #13-34H	Survey Calculation Method:	Minimum Curvature
Wellbore:	Original Wellbore		
Design:	APD Directional Plan		

Planned Survey									
Measured Depth (ft)	Inclination (°)	Azimuth (°)	Vertical Depth (ft)	+N/-S (ft)	+E/-W (ft)	Vertical Section (ft)	Dogleg Rate (°/100ft)	Build Rate (°/100ft)	Turn Rate (°/100ft)
7,725.0	59.22	332.86	7,641.7	207.5	-106.3	233.1	12.00	12.00	0.00
7,731.5	60.00	332.86	7,645.0	212.5	-108.9	238.7	12.00	12.00	0.00
B1 Chalk									
7,750.0	62.22	332.86	7,653.9	226.9	-116.3	254.9	12.00	12.00	0.00
7,775.0	65.22	332.86	7,665.0	246.8	-126.5	277.3	12.00	12.00	0.00
7,800.0	68.22	332.86	7,674.9	267.2	-137.0	300.3	12.00	12.00	0.00
7,825.0	71.22	332.86	7,683.5	288.1	-147.7	323.8	12.00	12.00	0.00
7,850.0	74.22	332.86	7,691.0	309.4	-158.6	347.6	12.00	12.00	0.00
7,865.7	76.11	332.86	7,695.0	322.9	-165.5	362.8	12.00	12.00	0.00
B-Chalk									
7,875.0	77.22	332.86	7,697.1	330.9	-169.6	371.8	12.00	12.00	0.00
7,900.0	80.22	332.86	7,702.0	352.7	-180.8	396.4	12.00	12.00	0.00
7,925.0	83.22	332.86	7,705.6	374.7	-192.1	421.1	12.00	12.00	0.00
7,950.0	86.22	332.86	7,707.9	396.9	-203.4	446.0	12.00	12.00	0.00
7,975.0	89.22	332.86	7,708.9	419.1	-214.8	471.0	12.00	12.00	0.00
7,981.5	90.00	332.86	7,709.0	424.9	-217.8	477.5	12.00	12.00	0.00
7"									
8,000.0	90.00	332.86	7,709.0	441.4	-226.2	496.0	0.00	0.00	0.00
8,100.0	90.00	332.86	7,709.0	530.4	-271.8	596.0	0.00	0.00	0.00
8,200.0	90.00	332.86	7,709.0	619.3	-317.5	696.0	0.00	0.00	0.00
8,300.0	90.00	332.86	7,709.0	708.3	-363.1	796.0	0.00	0.00	0.00
8,400.0	90.00	332.86	7,709.0	797.3	-408.7	896.0	0.00	0.00	0.00
8,500.0	90.00	332.86	7,709.0	886.3	-454.3	996.0	0.00	0.00	0.00
8,600.0	90.00	332.86	7,709.0	975.3	-499.9	1,096.0	0.00	0.00	0.00
8,700.0	90.00	332.86	7,709.0	1,064.3	-545.5	1,196.0	0.00	0.00	0.00
8,800.0	90.00	332.86	7,709.0	1,153.3	-591.1	1,296.0	0.00	0.00	0.00
8,900.0	90.00	332.86	7,709.0	1,242.3	-636.8	1,396.0	0.00	0.00	0.00
9,000.0	90.00	332.86	7,709.0	1,331.3	-682.4	1,496.0	0.00	0.00	0.00
9,100.0	90.00	332.86	7,709.0	1,420.3	-728.0	1,596.0	0.00	0.00	0.00
9,200.0	90.00	332.86	7,709.0	1,509.3	-773.6	1,696.0	0.00	0.00	0.00
9,300.0	90.00	332.86	7,709.0	1,598.2	-819.2	1,796.0	0.00	0.00	0.00
9,400.0	90.00	332.86	7,709.0	1,687.2	-864.8	1,896.0	0.00	0.00	0.00
9,500.0	90.00	332.86	7,709.0	1,776.2	-910.4	1,996.0	0.00	0.00	0.00
9,600.0	90.00	332.86	7,709.0	1,865.2	-956.0	2,096.0	0.00	0.00	0.00
9,700.0	90.00	332.86	7,709.0	1,954.2	-1,001.7	2,196.0	0.00	0.00	0.00
9,800.0	90.00	332.86	7,709.0	2,043.2	-1,047.3	2,296.0	0.00	0.00	0.00
9,900.0	90.00	332.86	7,709.0	2,132.2	-1,092.9	2,396.0	0.00	0.00	0.00
10,000.0	90.00	332.86	7,709.0	2,221.2	-1,138.5	2,496.0	0.00	0.00	0.00
10,100.0	90.00	332.86	7,709.0	2,310.2	-1,184.1	2,596.0	0.00	0.00	0.00
10,200.0	90.00	332.86	7,709.0	2,399.2	-1,229.7	2,696.0	0.00	0.00	0.00
10,300.0	90.00	332.86	7,709.0	2,488.2	-1,275.3	2,796.0	0.00	0.00	0.00
10,400.0	90.00	332.86	7,709.0	2,577.1	-1,321.0	2,896.0	0.00	0.00	0.00
10,500.0	90.00	332.86	7,709.0	2,666.1	-1,366.6	2,996.0	0.00	0.00	0.00
10,600.0	90.00	332.86	7,709.0	2,755.1	-1,412.2	3,096.0	0.00	0.00	0.00
10,700.0	90.00	332.86	7,709.0	2,844.1	-1,457.8	3,196.0	0.00	0.00	0.00
10,800.0	90.00	332.86	7,709.0	2,933.1	-1,503.4	3,296.0	0.00	0.00	0.00
10,900.0	90.00	332.86	7,709.0	3,022.1	-1,549.0	3,396.0	0.00	0.00	0.00
11,000.0	90.00	332.86	7,709.0	3,111.1	-1,594.6	3,496.0	0.00	0.00	0.00
11,100.0	90.00	332.86	7,709.0	3,200.1	-1,640.3	3,596.0	0.00	0.00	0.00
11,200.0	90.00	332.86	7,709.0	3,289.1	-1,685.9	3,696.0	0.00	0.00	0.00
11,300.0	90.00	332.86	7,709.0	3,378.1	-1,731.5	3,796.0	0.00	0.00	0.00
11,400.0	90.00	332.86	7,709.0	3,467.1	-1,777.1	3,896.0	0.00	0.00	0.00
11,500.0	90.00	332.86	7,709.0	3,556.0	-1,822.7	3,996.0	0.00	0.00	0.00

Database:	EDM 2003.21 Single User Db	Local Co-ordinate Reference:	Well Tree Creek #13-34H
Company:	Denver Division- Colorado	TVD Reference:	WELL @ 5316.0ft (Original Well Elev)
Project:	DJ - Hereford Ranch	MD Reference:	WELL @ 5316.0ft (Original Well Elev)
Site:	Tree Creek #13-34H	North Reference:	True
Well:	Tree Creek #13-34H	Survey Calculation Method:	Minimum Curvature
Wellbore:	Original Wellbore		
Design:	APD Directional Plan		

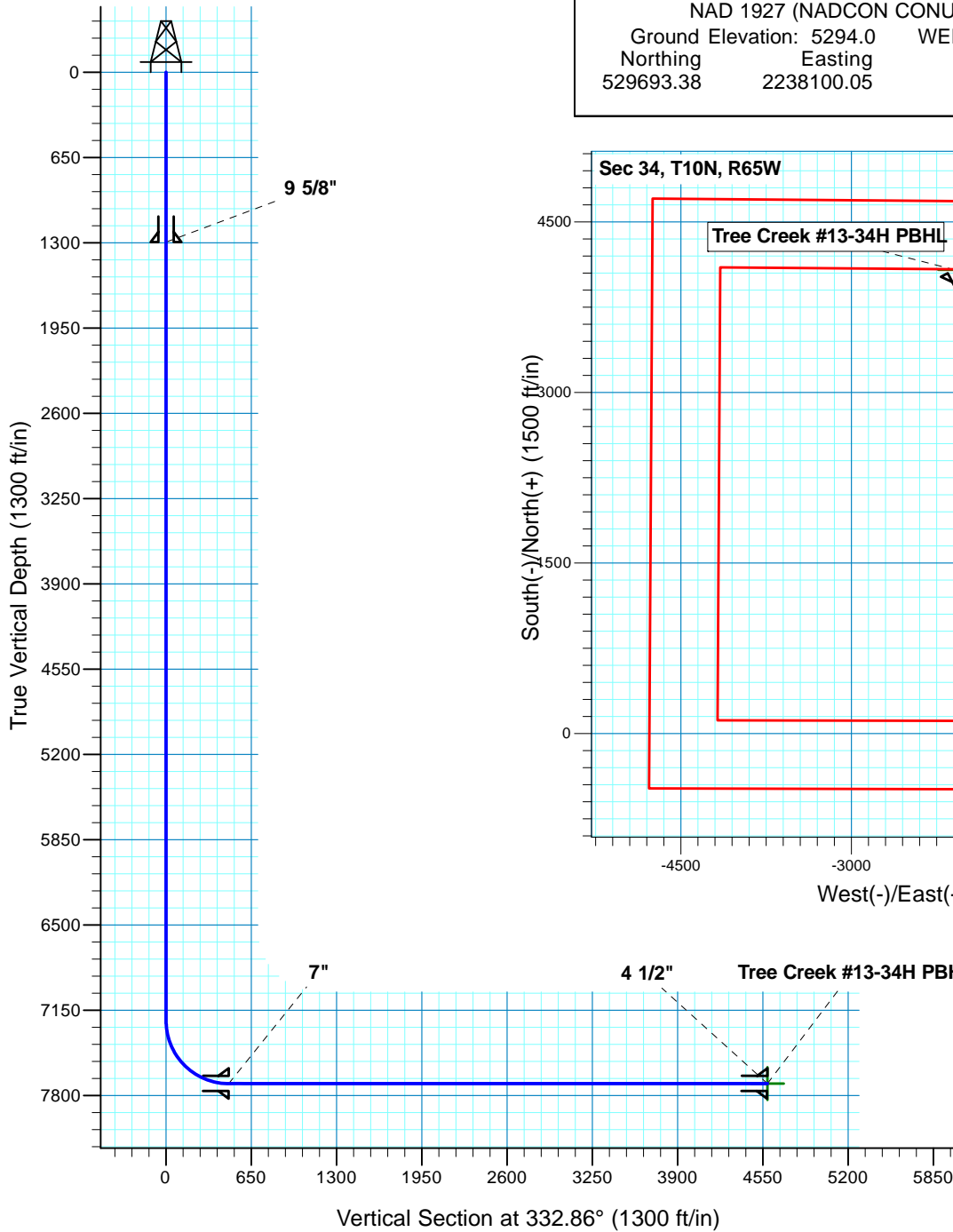
Planned Survey										
Measured Depth (ft)	Inclination (°)	Azimuth (°)	Vertical Depth (ft)	+N/-S (ft)	+E/-W (ft)	Vertical Section (ft)	Dogleg Rate (°/100ft)	Build Rate (°/100ft)	Turn Rate (°/100ft)	
11,600.0	90.00	332.86	7,709.0	3,645.0	-1,868.3	4,096.0	0.00	0.00	0.00	
11,700.0	90.00	332.86	7,709.0	3,734.0	-1,913.9	4,196.0	0.00	0.00	0.00	
11,800.0	90.00	332.86	7,709.0	3,823.0	-1,959.6	4,296.0	0.00	0.00	0.00	
11,900.0	90.00	332.86	7,709.0	3,912.0	-2,005.2	4,396.0	0.00	0.00	0.00	
12,000.0	90.00	332.86	7,709.0	4,001.0	-2,050.8	4,496.0	0.00	0.00	0.00	
12,087.2	90.00	332.86	7,709.0	4,078.6	-2,090.5	4,583.1	0.00	0.00	0.00	

Targets										
Target Name	Dip Angle (°)	Dip Dir. (°)	TVD (ft)	+N/-S (ft)	+E/-W (ft)	Northing (ft)	Easting (ft)	Latitude	Longitude	
- hit/miss target										
- Shape										
Tree Creek #13-34H PB	0.00	0.00	7,709.0	4,078.6	-2,090.5	533,751.49	2,235,970.06	40° 47' 43.600 N	104° 38' 52.010 W	
- plan hits target center										
- Point										

Casing Points						
Measured Depth (ft)	Vertical Depth (ft)	Name	Casing Diameter (")	Hole Diameter (")		
1,295.0	1,295.0	9 5/8"	9-5/8	13-1/2		
7,981.5	7,709.0	7"	7	8-3/4		
12,087.2	7,709.0	4 1/2"	4-1/2	6		

Formations						
Measured Depth (ft)	Vertical Depth (ft)	Name	Lithology	Dip (°)	Dip Direction (°)	
895.0	895.0	Fox Hills		0.00		
1,225.0	1,225.0	Pierre Shale		0.00		
4,245.0	4,245.0	Richard Sand		0.00		
4,385.0	4,385.0	Hygiene		0.00		
7,586.9	7,555.0	Sharon Springs		0.00		
7,660.4	7,605.0	Niobrara		0.00		
7,731.5	7,645.0	B1 Chalk		0.00		
7,865.7	7,695.0	B-Chalk		0.00		
	7,709.0	Target Zone		0.00		

Tree Creek #13-34H
Section 34 T10N R65W
Weld County, CO



Surface Location			
NAD 1927 (NADCON CONUS)	Colorado North 501		
Ground Elevation: 5294.0	WELL @ 5316.0ft (Original Well Elev)		
Northing	Easting	Latitude	Longitude
529693.38	2238100.05	40° 47' 3.300 N	104° 38' 24.830 W

T M
Azimuths to True North
Magnetic North: 8.99°
Magnetic Field
Strength: 53512.6snT
Dip Angle: 67.44°
Date: 2009/12/31
Model: IGRF200510

Project: DJ - Hereford Ranch
Site: Tree Creek #13-34H
Well: Tree Creek #13-34H
Plan: APD Directional Plan

SECTION DETAILS										
Sec	MD	Inc	Azi	TVD	+N/-S	+E/-W	DLeg	TFace	VSec	Target
1	0.0	0.00	0.00	0.0	0.0	0.0	0.00	0.00	0.0	
2	7231.5	0.00	0.00	7231.5	0.0	0.0	0.00	0.00	0.0	
3	7981.5	90.00	332.86	7709.0	424.9	-217.8	12.00	332.86	477.5	
4	12087.2	90.00	332.86	7709.0	4078.6	-2090.5	0.00	0.00	4583.1	Tree Creek #13-34H PBHL
TARGET DETAILS										
Name	TVD	+N/-S	+E/-W	Northing	Easting	Latitude	Longitude	Shape		
Tree Creek #13-34H PBHL	7709.0	4078.6	-2090.5	533751.49	2235970.06	40° 47' 43.600 N	104° 38' 52.010 W	Point		