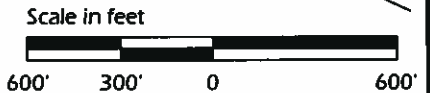
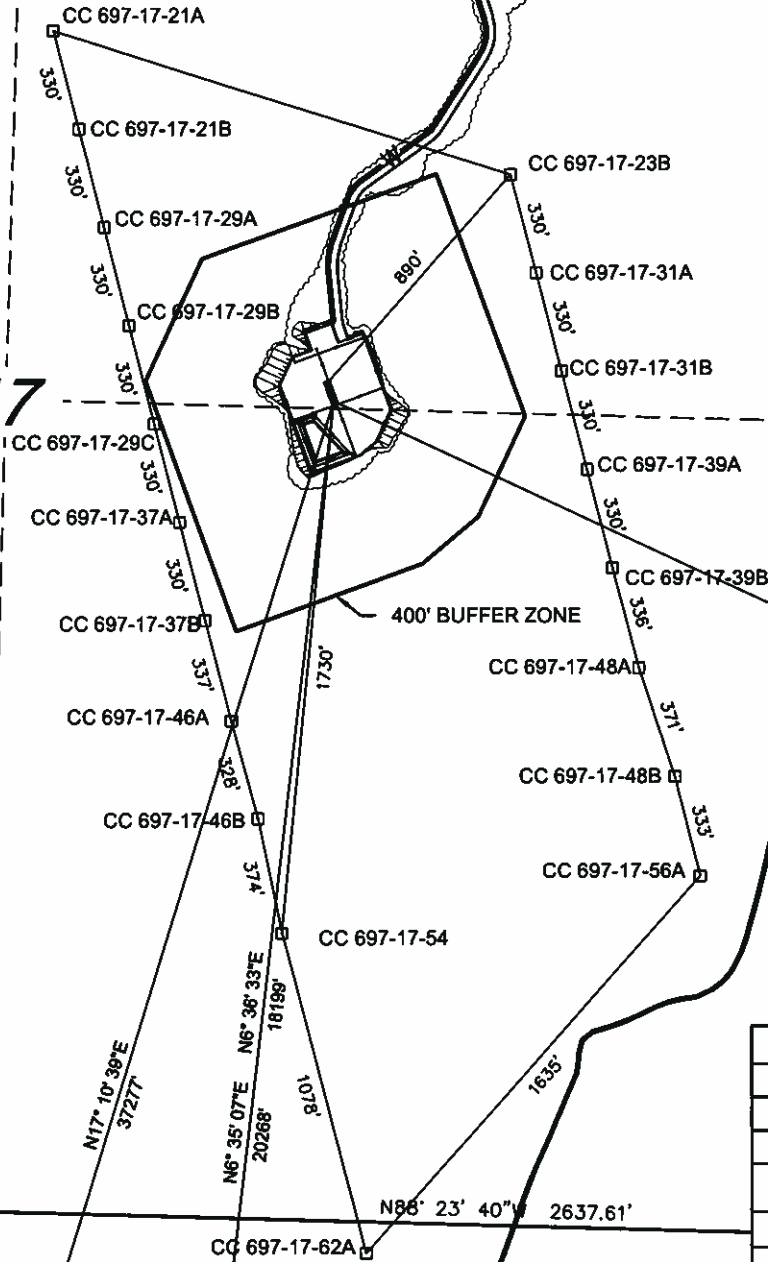


VISIBLE IMPROVEMENTS FROM WELL PAD CC 697-17B

	BEARING	DISTANCE
Building	N06° 36' 33"E	18,199
Public Road	N06° 35' 07"E	20,268
Above Gnd. Util.	N17° 10' 36"E	37,277
Railroad	N65° 02' 16"W	45,068

PROPOSED 20' ACCESS
w/ GAS AND WATER PIPELINES

17



CURRENT LAND USE			
CROP LAND	NON-CROP LAND	X	SUBDIVIDED
IRRIGATED	RANGE LAND		INDUSTRIAL
DRY LAND	TIMBER		COMMERCIAL
IMPROVED PASTURE	RECREATIONAL		RESIDENTIAL
HAY MEADOW	OTHER(describe)*		
CROP	PRIVATE LAND	X	

DATE REVISED: 2010-12-23

DEL-MONT CONSULTANTS IS PROVIDING GRADING DESIGN FOR THIS PROJECT THAT PROVIDES DIMENSIONS AND VOLUME INFORMATION FOR CONSTRUCTION.



DEL-MONT CONSULTANTS, INC.
10000 DEL-MONT BLVD. SUITE 100
DENVER, CO 80231
TEL: 303.733.1111 FAX: 303.733.1112
WWW.DELMONTCONSULTANTS.COM



**SECTION 17, T6S, R97W. 6TH PM
LOCATION**

**WELL PAD 697-17B
GARFIELD COUNTY
OXY USA WTP LP**

DMC JOB NO. 10080

DATE ISSUED: 2010-11-23

DATE SURVEYED: 2008-11-06

PLAT: 6 of 9

DESIGNED BY:	SCALE:
MGW	AS NOTED
CHECKED BY:	FILE NAME:
K.SHEPHERD	10080C_697-17B