

Encana OIL & GAS (USA) INC.

T6S, R96W, 6th P.M.

Brass Cap,
1.5' High
Lat: 39.531719°
Long: 108.140828°

2000 Alum. Cap
0.8' High, LS #18268
Mound of Stones
Lat: 38.531642°
Long: 108.121122°

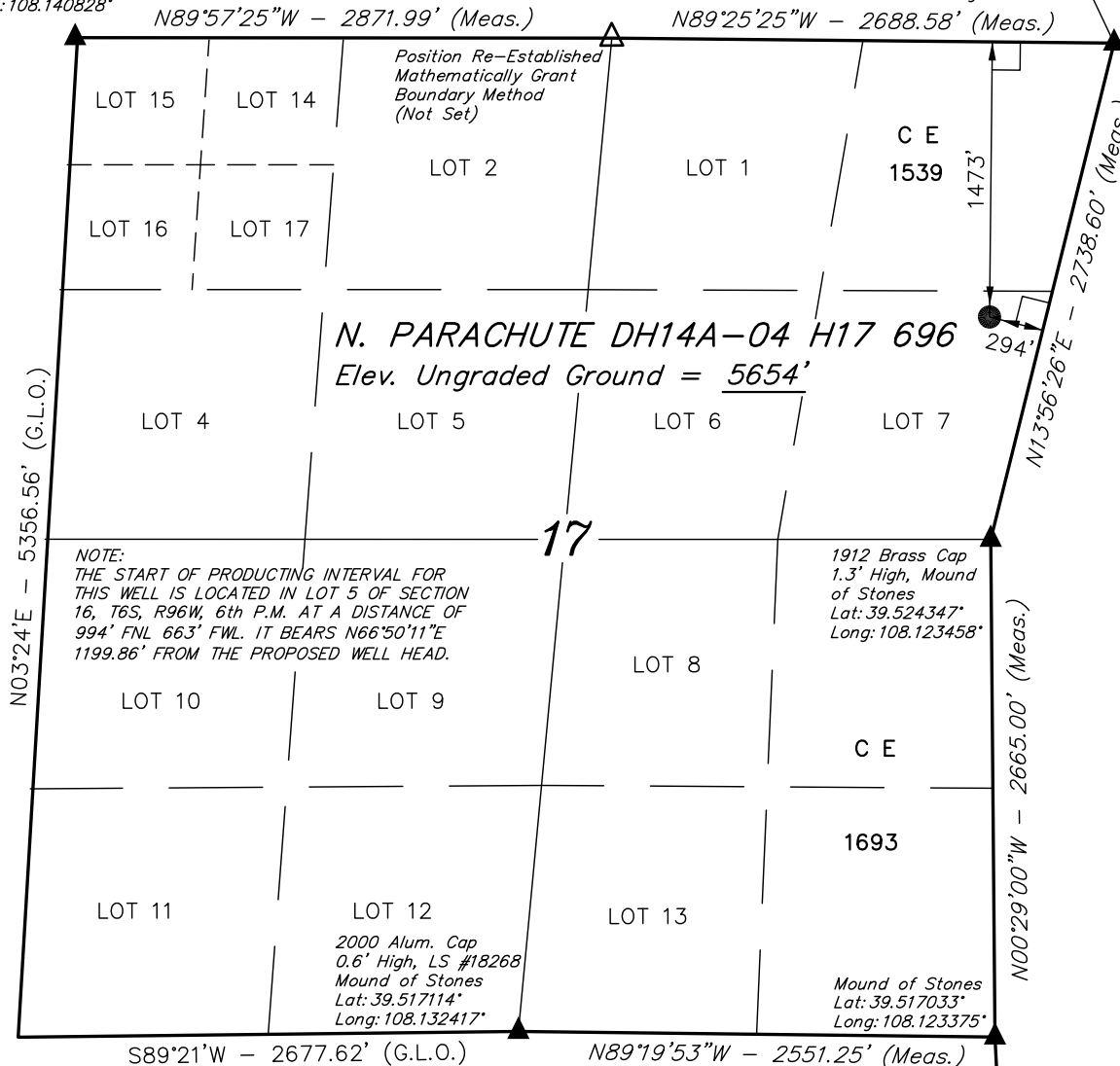
Well location, N. PARACHUTE DH14A-04 H17 696 (SURFACE LOCATION), located as shown in Lot 7 of Section 17, T6S, R96W, 6th P.M., Garfield County, Colorado.

BASIS OF ELEVATION

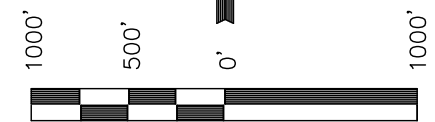
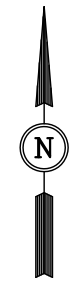
SPOT ELEVATION AT THE NORTHWEST CORNER OF SECTION 30, T5S, R95W, 6th P.M. TAKEN FROM THE FORKED GULCH QUADRANGLE, COLORADO, GARFIELD COUNTY, 7.5 MINUTE SERIES (TOPOGRAPHICAL MAP) PUBLISHED BY THE UNITED STATES DEPARTMENT OF THE INTERIOR, GEOLOGICAL SURVEY. SAID ELEVATION IS MARKED AS BEING 5966 FEET.

BASIS OF BEARINGS

BASIS OF BEARINGS IS A G.P.S. OBSERVATION.

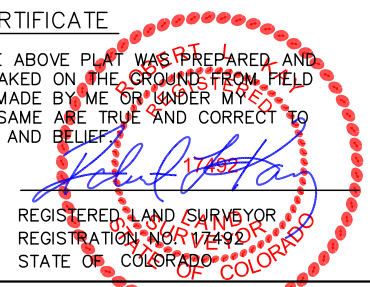


Sheet 1jj of 10



SCALE
CERTIFICATE

THIS IS TO CERTIFY THAT THE ABOVE PLAT WAS PREPARED AND LOCATION AS SHOWN WAS STAKED ON THE GROUND FROM FIELD NOTES OF ACTUAL SURVEYS MADE BY ME OR UNDER MY SUPERVISION AND THAT THE SAME ARE TRUE AND CORRECT TO THE BEST OF MY KNOWLEDGE AND BELIEF.



Revised: 12-01-10 D.R.B.

UINTAH ENGINEERING & LAND SURVEYING 85 SOUTH 200 EAST - VERNAL, UTAH 84078 (435) 789-1017		
SCALE 1" = 1000'	DATE SURVEYED: 09-01-10	DATE DRAWN: 09-20-10
PARTY G.O. J.N. D.R.B.	REFERENCES G.L.O. PLAT	
WEATHER WARM	FILE Encana OIL & GAS (USA) INC.	

LEGEND:

- └─┘ = 90° SYMBOL
- = PROPOSED WELL HEAD.
- ▲ = SECTION CORNERS LOCATED.
- △ = SECTION CORNERS RE-ESTAB. (NOT SET ON GROUND)

LINE TABLE		
LINE	BEARING	LENGTH
L1	N02°53'50"W	460.83'

NOTE:
SEE ADDENDUM PLAT FOR EXISTING IMPROVEMENT WITHIN 400' OF THE PROPOSED WELL HEAD.

PDOP = 2.8
NAD 83 (SURFACE LOCATION)
LATITUDE = 39°31'39.42" (39.527617)
LONGITUDE = 108°07'24.54" (108.123483)
NAD 27 (SURFACE LOCATION)
LATITUDE = 39°31'39.50" (39.527639)
LONGITUDE = 108°07'22.26" (108.122850)

C.C. 1912 Brass Cap, 1.3' High
Lat: 39.515769°
Long: 108.123294°

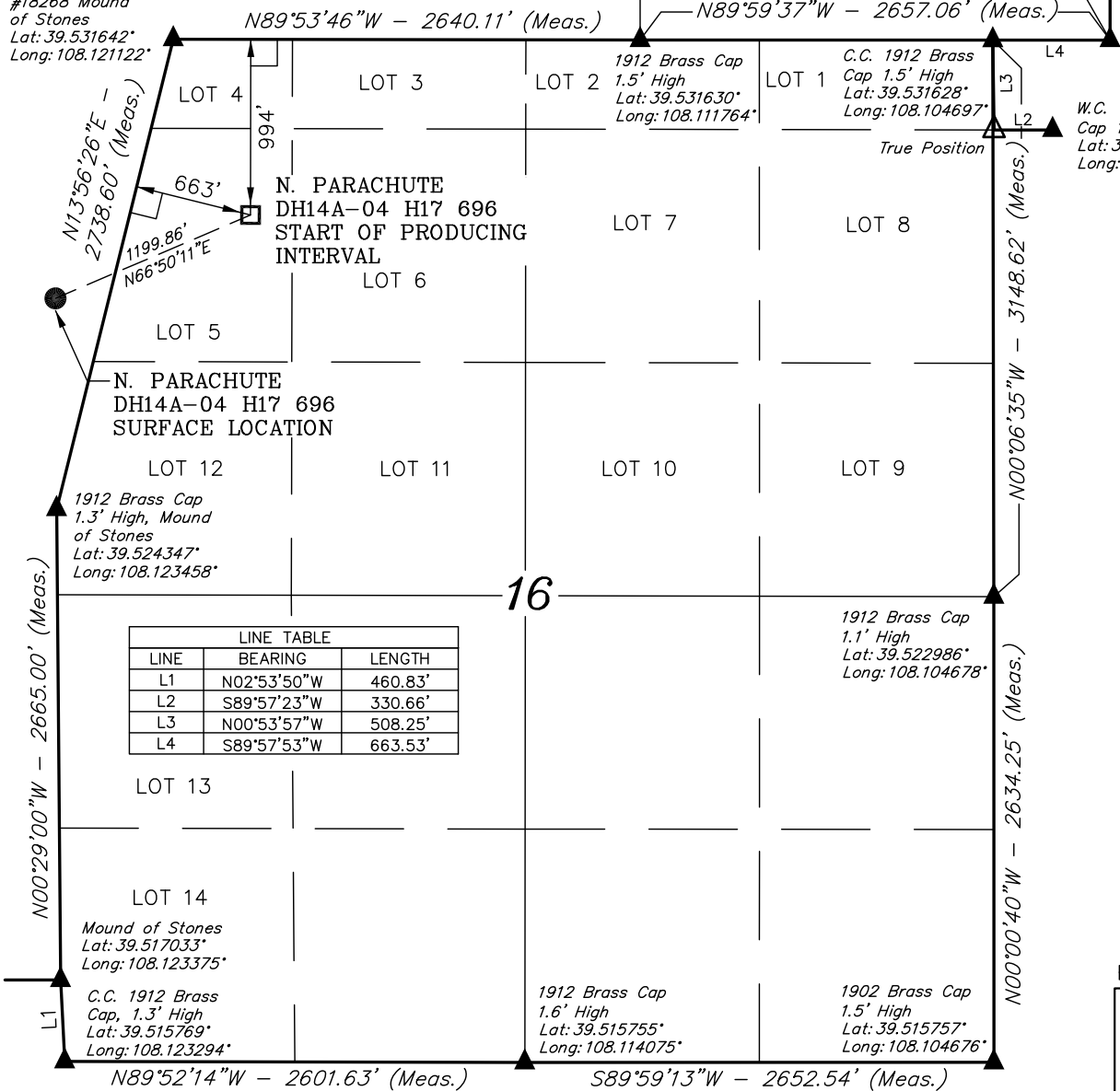
T6S, R96W, 6th P.M.

Encana OIL & GAS (USA) INC.

Well location, N. PARACHUTE DH14A-04 H17 696 (START OF PRODUCING INTERVAL), located as shown in Lot 5 of Section 16, T6S, R96W, 6th P.M., Garfield County, Colorado.

2000 Alum. Cap
0.8' High, LS
#18268 Mound
of Stones
Lat: 39.531642°
Long: 108.121122°

1912 Brass Cap
1.5' High
Lat: 39.531629°
Long: 108.102347°



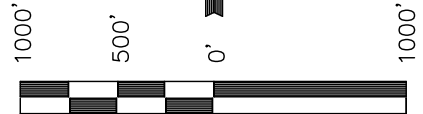
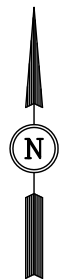
BASIS OF BEARINGS

BASIS OF BEARINGS IS A G.P.S. OBSERVATION.

BASIS OF ELEVATION

SPOT ELEVATION AT THE NORTHWEST CORNER OF SECTION 30, T5S, R95W, 6th P.M. TAKEN FROM THE FORKED GULCH QUADRANGLE, COLORADO, GARFIELD COUNTY, 7.5 MINUTE SERIES (TOPOGRAPHICAL MAP) PUBLISHED BY THE UNITED STATES DEPARTMENT OF THE INTERIOR, GEOLOGICAL SURVEY. SAID ELEVATION IS MARKED AS BEING 5966 FEET.

Sheet 1kk of 10



SCALE

CERTIFICATE

THIS IS TO CERTIFY THAT THE ABOVE PLAT WAS PREPARED AND LOCATION AS SHOWN WAS STAKED ON THE GROUND FROM FIELD NOTES OF ACTUAL SURVEYS MADE BY ME OR UNDER MY SUPERVISION AND THAT THE SAME ARE TRUE AND CORRECT TO THE BEST OF MY KNOWLEDGE AND BELIEF.

Paul J. Atan
17492
REGISTERED LAND SURVEYOR
REGISTRATION NO. 17492
STATE OF COLORADO

Revised: 12-01-10 D.R.B.

UINTAH ENGINEERING & LAND SURVEYING 85 SOUTH 200 EAST - VERNAL, UTAH 84078 (435) 789-1017		
SCALE 1" = 1000'	DATE SURVEYED: 09-01-10	DATE DRAWN: 09-20-10
PARTY G.O. J.N. D.R.B.	REFERENCES G.L.O. PLAT	
WEATHER WARM	FILE Encana OIL & GAS (USA) INC.	

LEGEND:

- = 90° SYMBOL
- = PROPOSED WELL HEAD.
- = SECTION CORNERS LOCATED.

NAD 83 (START OF PRODUCING INTERVAL)
LATITUDE = 39°31'44.09" (39.528914)
LONGITUDE = 108°07'10.46" (108.119572)
NAD 27 (START OF PRODUCING INTERVAL)
LATITUDE = 39°31'44.17" (39.528936)
LONGITUDE = 108°07'08.18" (108.118939)

Sec. 36

T6S, R96W, 6th P.M.

Encana OIL & GAS (USA) INC.

S 1/4 Cor. Sec. 36,
1912 Brass Cap, 1.5'
High, Conduit
Lat: 39.564417
Long: 108.117936

SE Cor Sec. 36,
1982 Private Brass
Cap, 0.6' High, Sign
Lat: 39.564417
Long: 108.108631

Well location, N. PARACHUTE DH14A-04 H17
696 (PERMIT TD), located as shown in Lot 12
of Section 4, T6S, R96W, 6th P.M., Garfield
County, Colorado.

C.C.
1912 Brass Cap,
1.5' High, Sign
Lat: 39.564417
Long: 108.120500

P.C. 1912 Brass Cap,
1.0' High, Conduit,
Pile of Stones, Sign
Lat: 39.564419
Long: 108.110489

R
96
W
C.C.
1912 Brass Cap,
0.2' High, Pile of
Stones
Lat: 39.563064
Long: 108.108631

1912 Brass Cap
2.0' High
Lat: 39.563044
Long: 108.096700

N00°01'46"W - 3622.72' (Meas.)

N89°52'47"W - 3364.89' (Meas.)

T5S
T6S

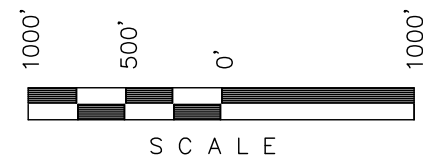
BASIS OF BEARINGS

BASIS OF BEARINGS IS A G.P.S. OBSERVATION.

BASIS OF ELEVATION

SPOT ELEVATION AT THE NORTHWEST CORNER OF SECTION
30, T5S, R95W, 6th P.M. TAKEN FROM THE FORKED GULCH
QUADRANGLE, COLORADO, GARFIELD COUNTY, 7.5 MINUTE
SERIES (TOPOGRAPHICAL MAP) PUBLISHED BY THE UNITED
STATES DEPARTMENT OF THE INTERIOR, GEOLOGICAL SURVEY.
SAID ELEVATION IS MARKED AS BEING 5966 FEET.

Sheet 111 of 10



LINE TABLE		
LINE	BEARING	LENGTH
L1	N89°55'56"W	722.76'
L2	N89°59'23"W	524.22'
L3	N00°02'45"E	493.26'
L4	N89°56'20"W	319.44'

NAD 83 (PERMIT TD)	
LATITUDE =	39°32'50.28" (39.547300)
LONGITUDE =	108°06'44.59" (108.112386)
NAD 27 (PERMIT TD)	
LATITUDE =	39°32'50.36" (39.547322)
LONGITUDE =	108°06'42.31" (108.111753)

LEGEND:

- └─┘ = 90° SYMBOL
- = PROPOSED WELL HEAD.
- ▲ = SECTION CORNERS LOCATED.

NOTE:
THE PERMIT TD FOR THIS WELL BEARS
N16°50'31"E 6999.48' FROM THE START
OF PRODUCTIN INTERVAL.

Lot 12
N. PARACHUTE
DH14A-04 H17 696
PERMIT TD

W.C. 1912 Brass
Cap 1.5' High
Lat: 39.546711
Long: 108.110881

1912 Brass Cap 0.4'
High, E-W Fenceline,
Pile of Stones
Lat: 39.546719
Long: 108.121375

N89°55'10"W -
2640.94' (Meas.)

215' True Position

N89°56'20"W - 2719.79' (Meas.)

1912 Brass Cap
1.5' High
Lat: 39.546703
Long: 108.102369

Revised: 12-01-10 D.R.B.

CERTIFICATE

THIS IS TO CERTIFY THAT THE ABOVE PLAT WAS PREPARED AND
LOCATION AS SHOWN WAS STAKED ON THE GROUND FROM FIELD
NOTES OF ACTUAL SURVEYS MADE BY ME OR UNDER MY
SUPERVISION AND THAT THE SAME ARE TRUE AND CORRECT TO
THE BEST OF MY KNOWLEDGE AND BELIEF.

REGISTERED LAND SURVEYOR
REGISTRATION NO. 17492
STATE OF COLORADO

UINTAH ENGINEERING & LAND SURVEYING 85 SOUTH 200 EAST - VERNAL, UTAH 84078 (435) 789-1017		
SCALE 1" = 1000'	DATE SURVEYED: 09-01-10	DATE DRAWN: 09-20-10
PARTY G.O. J.N. D.R.B.	REFERENCES G.L.O. PLAT	
WEATHER WARM	FILE Encana OIL & GAS (USA) INC.	