

UINTAH ENGINEERING & LAND SURVEYING  
85 So. 200 East \* Vernal, Utah 84078 \* (435) 789-1017

Encana OIL & GAS (USA) INC.

WELL PAD INTERFERENCE PLAT

WELL PAD H17 696  
SECTION 17, T6S, R96W, 6th P.M.  
SE 1/4 NE 1/4 (Lot 7)

50' 25' 0' 50'



S C A L E

Sheet 2 of 11



SCALE: 1" = 50'

DATE: 03-27-09

DRAWN BY: D.R.B.

Revised: 09-03-10 D.R.B.

Revised: 09-27-10 D.R.B.

Revised: 11-02-10 D.R.B.

Revised: 12-01-10 D.R.B.

S18°24'59"W

● 16-21D

● 16-22D

● 16-12D

● 16-11D

11A-16 12B-16  
06D-16 05D-16

07C-16 06C-16  
06B-16 07B-16

02D-16 05A-16  
02C-16 03D-16

02B-16 03B-16  
03C-16 04A-16

DH10A-21 DH14A-04

EOB#2

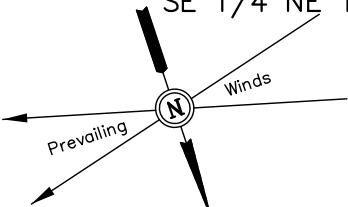
EOB#2



Encana OIL & GAS (USA) INC.

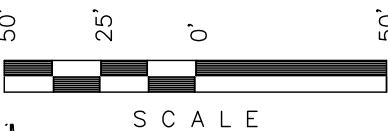
CONSTRUCTION LAYOUT FOR

WELL PAD H17 696  
SECTION 17, T6S, R96W, 6th P.M.  
SE 1/4 NE 1/4 (Lot 7)

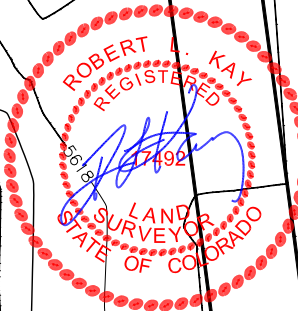


SCALE: 1" = 50'  
DATE: 09-17-07  
Drawn By: D.R.B.

Revised: 01-28-08 D.R.B.  
Revised: 05-27-08 D.R.B.  
Revised: 07-29-08 D.R.B.  
Revised: 01-22-09 D.R.B.  
Revised: 03-27-09 D.R.B.  
Revised: 09-03-10 D.R.B.  
Revised: 09-27-10 D.R.B.  
Revised: 11-02-10 D.R.B.  
Revised: 12-01-10 D.R.B.  
Revised: 12-02-10 D.R.B.



Sheet 3 of 11



"E"  
**NOTE:**  
Flare Pit is to be located a min. of 100' from the Well Head.

"D"

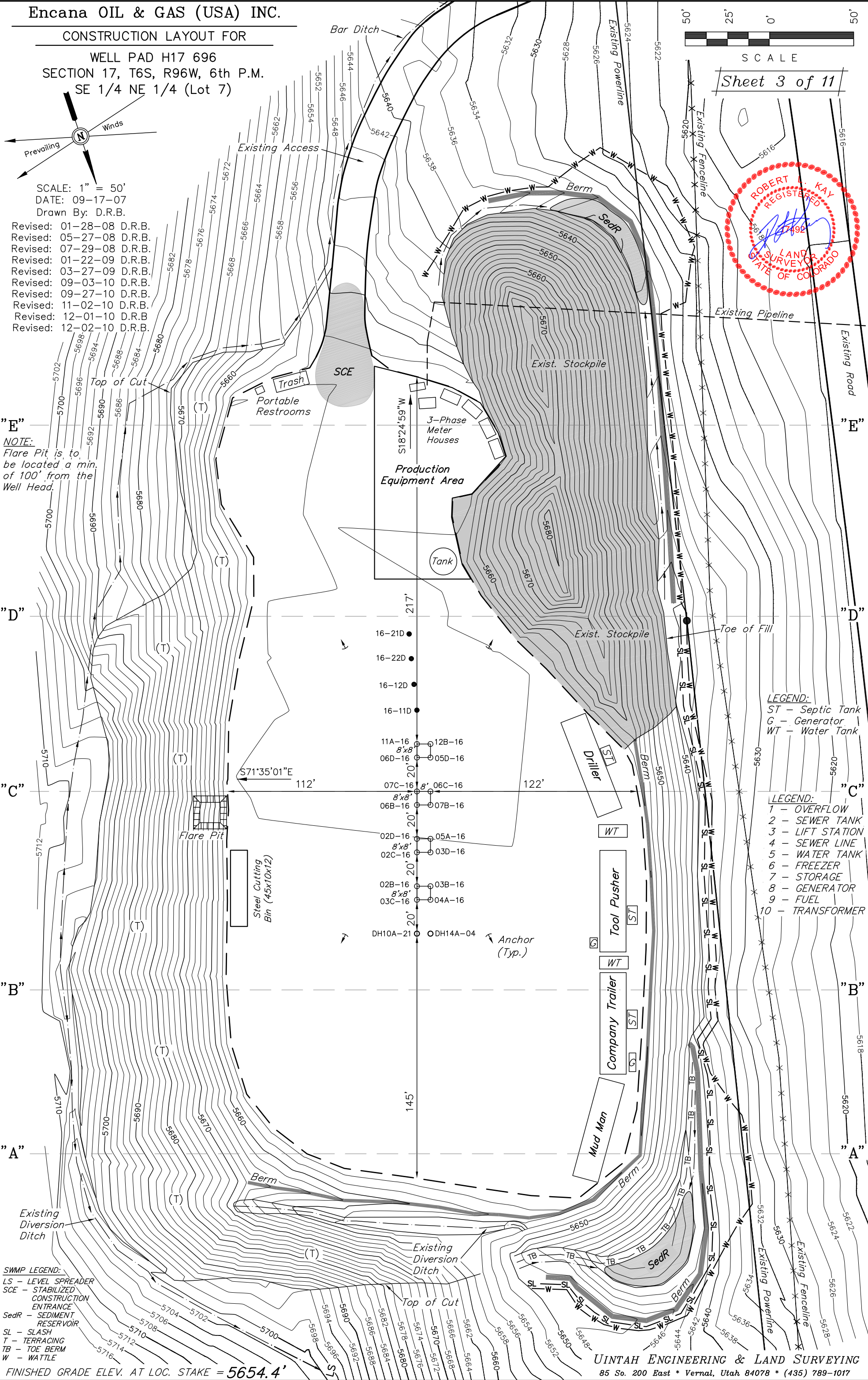
"C"

"B"

"A"

**SWMP LEGEND:**  
LS - LEVEL SPREADER  
SCE - STABILIZED CONSTRUCTION ENTRANCE  
SedR - SEDIMENT RESERVOIR  
SL - SLASH  
T - TERRACING  
TB - TOE BERM  
W - WATTLE

FINISHED GRADE ELEV. AT LOC. STAKE = 5654.4'



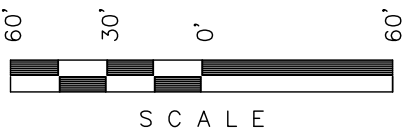
**LEGEND:**  
ST - Septic Tank  
G - Generator  
WT - Water Tank

**LEGEND:**  
1 - OVERFLOW  
2 - SEWER TANK  
3 - LIFT STATION  
4 - SEWER LINE  
5 - WATER TANK  
6 - FREEZER  
7 - STORAGE  
8 - GENERATOR  
9 - FUEL  
10 - TRANSFORMER

Encana OIL & GAS (USA) INC.

PRE-CONSTRUCTION LAYOUT FOR

WELL PAD H17 696  
SECTION 17, T6S, R96W, 6th P.M.  
SE 1/4 NE 1/4 (Lot 7)



SCALE

Sheet 3a of 11



SCALE: 1" = 50'

DATE: 03-27-09

DRAWN BY: D.R.B.

Revised: 09-03-10 D.R.B.

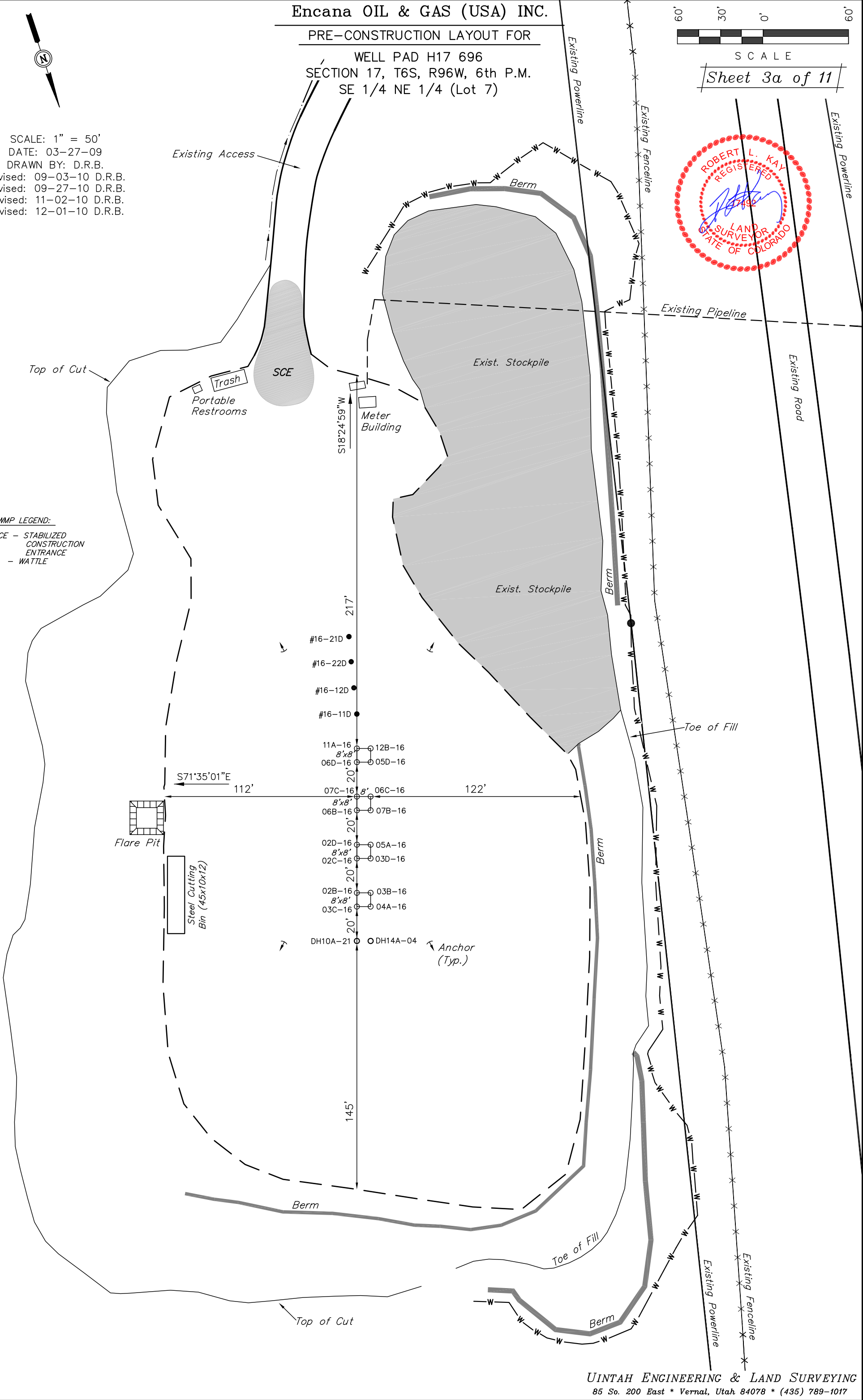
Revised: 09-27-10 D.R.B.

Revised: 11-02-10 D.R.B.

Revised: 12-01-10 D.R.B.

SWMP LEGEND:

SCE - STABILIZED  
CONSTRUCTION  
ENTRANCE  
W - WATTLE



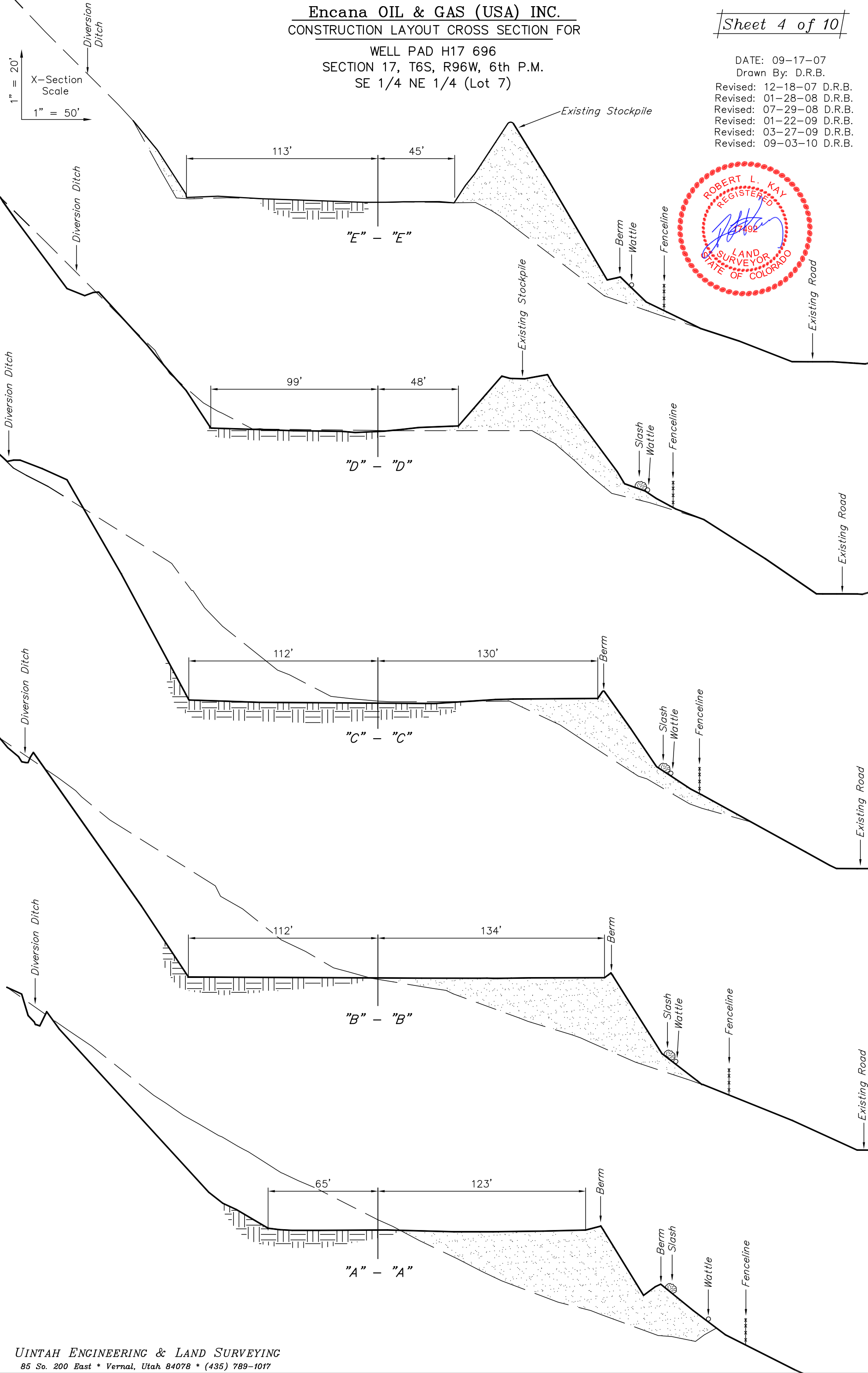
Encana OIL & GAS (USA) INC.  
CONSTRUCTION LAYOUT CROSS SECTION FOR

WELL PAD H17 696  
SECTION 17, T6S, R96W, 6th P.M.  
SE 1/4 NE 1/4 (Lot 7)

Sheet 4 of 10

DATE: 09-17-07  
Drawn By: D.R.B.

Revised: 12-18-07 D.R.B.  
Revised: 01-28-08 D.R.B.  
Revised: 07-29-08 D.R.B.  
Revised: 01-22-09 D.R.B.  
Revised: 03-27-09 D.R.B.  
Revised: 09-03-10 D.R.B.





UINTAH ENGINEERING & LAND SURVEYING  
85 So. 200 East \* Vernal, Utah 84078 \* (435) 789-1017

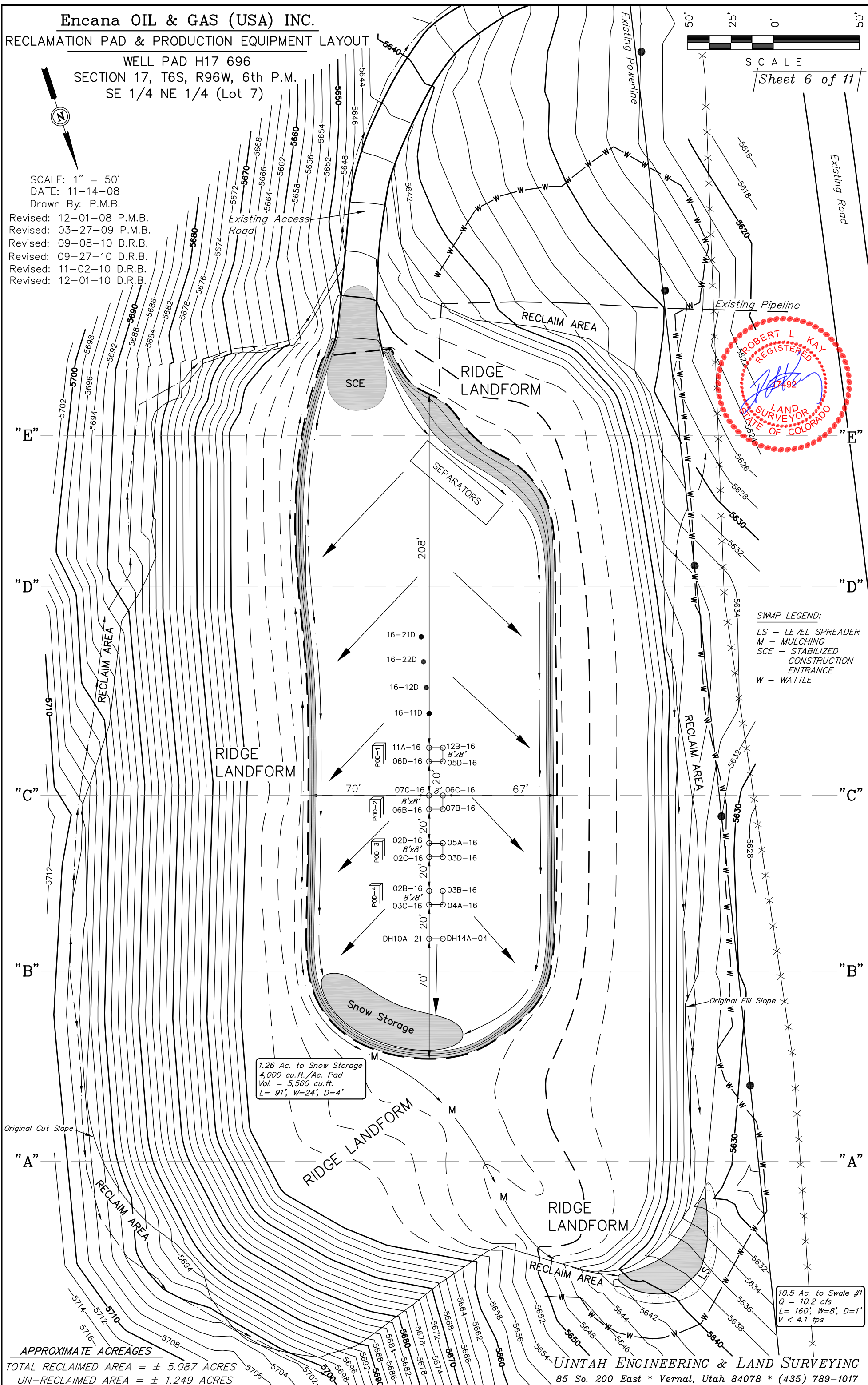
## RECLAMATION PAD & PRODUCTION EQUIPMENT LAYOUT

SCALE: 1" = 50'  
DATE: 11-14-08  
Drawn By: P.M.B.

Revised: 12-01-08 P.M.B.  
Revised: 03-27-09 P.M.B.  
Revised: 09-08-10 D.R.B.  
Revised: 09-27-10 D.R.B.  
Revised: 11-02-10 D.R.B.  
Revised: 12-01-10 D.R.B.



Sheet 6 of 11



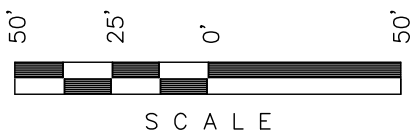
APPROXIMATE ACREAGES

TOTAL RECLAIMED AREA = ± 5.087 ACRES  
UN-RECLAIMED AREA = ± 1.249 ACRES

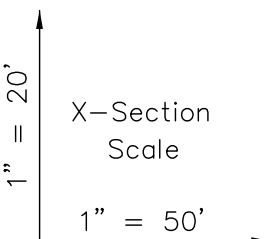
UTAH ENGINEERING & LAND SURVEYING  
85 So. 200 East \* Vernal, Utah 84078 \* (435) 789-1017

Encana OIL & GAS (USA) INC.  
CROSS SECTIONS OF INTERIM RECLAMATION PAD

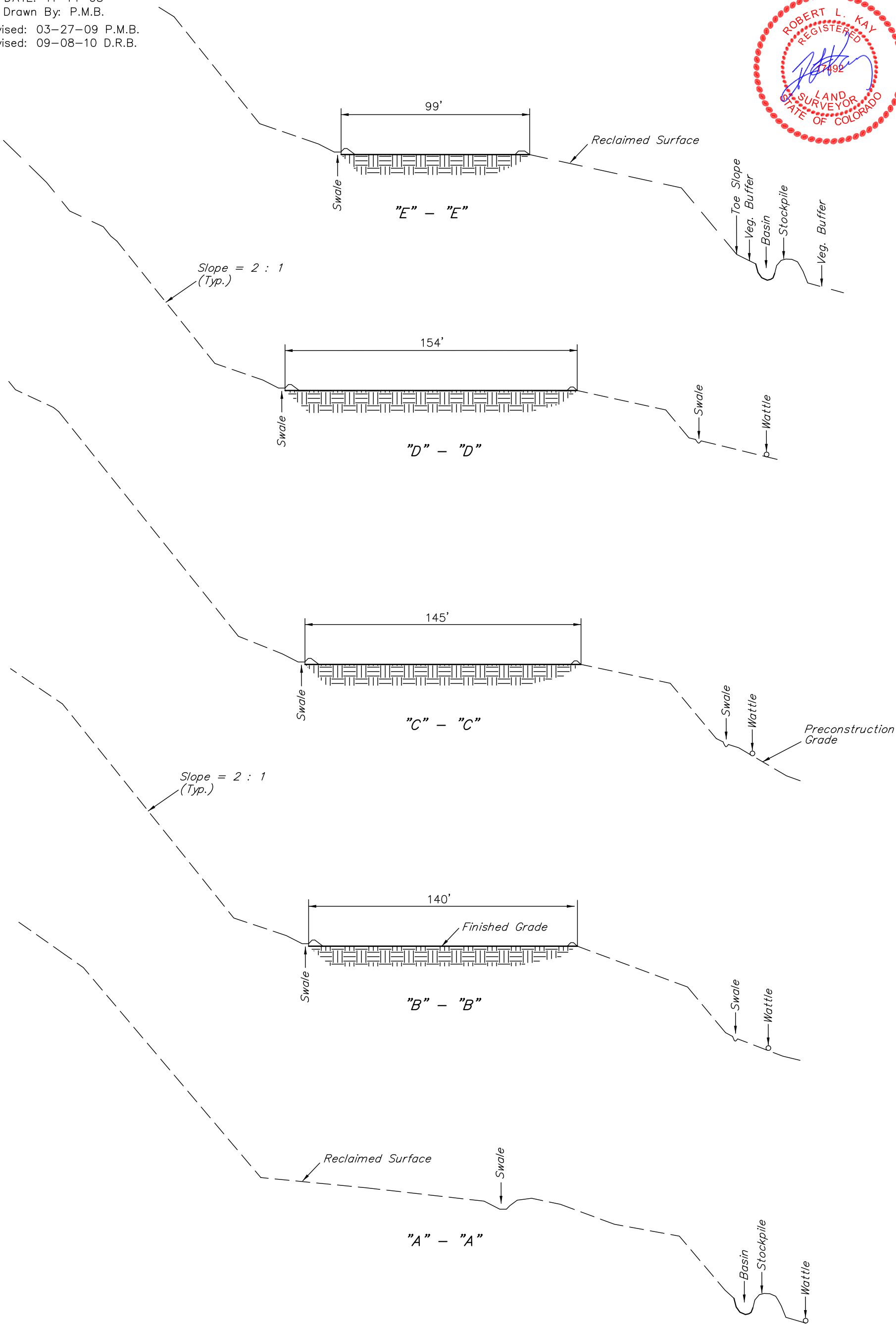
WELL PAD H17 696  
SECTION 17, T6S, R96W, 6th P.M.  
SE 1/4 NE 1/4 (Lot 7)



Sheet 6a of 10



DATE: 11-14-08  
Drawn By: P.M.B.  
Revised: 03-27-09 P.M.B.  
Revised: 09-08-10 D.R.B.





Encana OIL & GAS (USA) INC.

SURFACE DISTURBANCE AREA FOR

WELL PAD H17 696  
SECTION 17, T6S, R96W, 6th P.M.  
SE 1/4 NE 1/4 (Lot 7)

SCALE: 1" = 50'

DATE: 03-27-09

DRAWN BY: D.R.B.

Revised: 09-08-10 D.R.B.

Revised: 09-27-10 D.R.B.

Revised: 11-02-10 D.R.B.

Revised: 12-01-10 D.R.B.

Revised: 12-02-10 D.R.B.



SCALE

Sheet 7 of 11

| LINE TABLE |             |        |
|------------|-------------|--------|
| LINE       | BEARING     | LENGTH |
| L1         | S25°46'19"E | 26.07' |
| L2         | S17°44'04"E | 27.99' |
| L3         | S03°10'47"W | 32.05' |
| L4         | S49°08'46"W | 29.86' |
| L5         | S14°37'25"W | 43.74' |
| L6         | S73°49'22"W | 45.59' |
| L7         | S89°01'07"W | 20.29' |
| L8         | N81°34'23"W | 35.33' |
| L9         | S49°03'40"W | 42.34' |
| L10        | S87°14'59"W | 29.59' |
| L11        | N75°49'52"W | 21.64' |
| L12        | S71°18'41"W | 39.13' |
| L13        | N42°16'34"W | 48.22' |
| L14        | N05°36'00"W | 40.87' |
| L15        | N26°43'00"E | 34.35' |
| L16        | N80°49'14"E | 16.45' |
| L17        | N49°49'39"E | 16.60' |
| L18        | N05°48'38"E | 16.02' |
| L19        | N18°06'33"W | 34.96' |
| L20        | N84°45'01"E | 25.35' |
| L21        | S69°17'41"E | 23.03' |
| L22        | S48°00'45"E | 14.26' |
| L23        | S31°59'40"E | 13.86' |
| L24        | S04°05'06"E | 10.02' |



LEGEND:  
ST - Septic Tank  
G - Generator  
WT - Water Tank

LEGEND:  
1 - OVERFLOW  
2 - SEWER TANK  
3 - LIFT STATION  
4 - SEWER LINE  
5 - WATER TANK  
6 - FREEZER  
7 - STORAGE  
8 - GENERATOR  
9 - FUEL  
10 - TRANSFORMER

SWMP LEGEND:  
LS - LEVEL SPREADER  
SCE - STABILIZED CONSTRUCTION ENTRANCE  
SedR - SEDIMENT RESERVOIR  
SL - SLASH  
T - TERRACING  
TB - TOE BERM  
W - WATTLE

APPROXIMATE ACREAGES

APPROX. WELL DISTURBANCE = ± 5.190 ACRES  
ACCESS ROAD DISTURBANCE = ± 0.282 ACRES  
PIPELINE DISTURBANCE = ± 0.306 ACRES  
TOTAL = ± 5.778 ACRES