



1120 Lincoln Street, Suite 801, Denver Colorado 80203 (303) 894-2100 Fax (303) 894-2109

WELL ABANDONMENT REPORT

Submit original plus one copy. This form is to be submitted as an intent whenever a plugging is planned on a borehole. The approved intent shall be valid for twelve months after the approval date after that period a new intent will be required. After the plugging is complete, this form and one copy shall again be submitted as a subsequent report of the work as actually completed.

RECEIVED
APR 06 2010
COGCC

COGCC Operator Number: 96850	Contact Name & Telephone Jennifer Head	24 hour notice required, contact:
Name of Operator: Williams Production RMT Company	No: (303) 606-4342	
Address: 1515 Arapahoe St., Tower 3, Suite 1000	Fax: (303) 629-8268	
City: Denver State: CO Zip: 80202	Tel:	
API Number 05-103-11153		Complete the Attachment Checklist Oper OGCC
Well Name: Federal RGU Well Number: 33-6-297		
Location (QtrQtr, Sec, Twp, Rng, Meridian): NESW Sec. 6 T2S R97W		
County: Rio Blanco Federal, Indian or State Lease Number: COC62046		
Field Name Sulphur Creek Field Number 80090		

☐ Notice of Intent to Abandon ☒ Subsequent Report of Abandonment

Only Complete the Following Background Information for Intent to Abandon

Latitude: Longitude:

GPS Data:

Date of Measurement: PDOP Reading: Instrument Operator's Name:

Reason for Abandonment ☐ Dry ☐ Production Sub-economic ☐ Mechanical Problems ☒ Other

Casing to be Pulled: ☐ Yes ☒ No Top of Casing Cement:

Fish in Hole: ☐ Yes ☒ No If yes, explain details below

Wellbore has Uncemented Casing Leaks ☐ Yes ☒ No If yes, explain details below

Details:

Current and Previously Abandoned Zones

Formation	Perforations - Top	Perforations Bottom	Date Abandoned	Method of Isolation (None, Squeezed, BP, Cement, etc.)	Plug Depth

Casing History

String	Size of Hole	Size of Casing	Weight per ft	Setting Depth	Sacks Cement	Cement Bottom	Cement Top
Conductor	24"	18"	48#	80'	135	80'	Surface

Plugging Procedure for Intent and Subsequent Report

CIBP #1: Depth with sacks cmt on top. CIBP #2: Depth with sacks cmt on top

NOTE: Two (2) sacks cement required on all CIBPs.

Set 150 sks cmt from 600' ft. to 948' ft. in ☐ Casing ☒ Open Hole ☐ Annulus

Set 125 sks cmt from 474' ft. to 600' ft. in ☐ Casing ☒ Open Hole ☐ Annulus

Set 150 sks cmt from 200' ft. to 474' ft. in ☐ Casing ☒ Open Hole ☐ Annulus

Set 300 sks cmt from 97' ft. to 200' ft. in ☐ Casing ☒ Open Hole ☐ Annulus

Set 180 sks cmt from Surface ft. to 97' ft. in ☒ Casing ☐ Open Hole ☐ Annulus

Perforate and squeeze at ft. with sacks Leave at least 100 ft. in casing

Perforate and squeeze at ft. with sacks Leave at least 100 ft. in casing

Perforate and squeeze at ft. with sacks Leave at least 100 ft. in casing

Set sacks half in, half out surface casing from ft. to ft.

Set sacks at surface

Cut four feet below ground level, weld on plate Dry-Hole Marker: ☐ Yes ☐ No

Set sacks in rat hole Set sacks in mouse hole

Additional Plugging Information for Subsequent Report Only

Casing Recovered: ft. of in. casing Plugging date: 3/22/2008 3/23/2008 DA

*Wireline Contractor: *Cementing Contractor: Halliburton

Type of Cement and Additives Used: Standard Type III, Class G

*Attach job summaries.

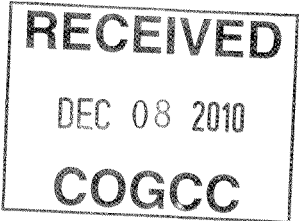
I hereby certify that the statements made in this form are, to the best of my knowledge, true, correct, and complete.

Print Name Jennifer Head Email: Jennifer.Head@Williams.com

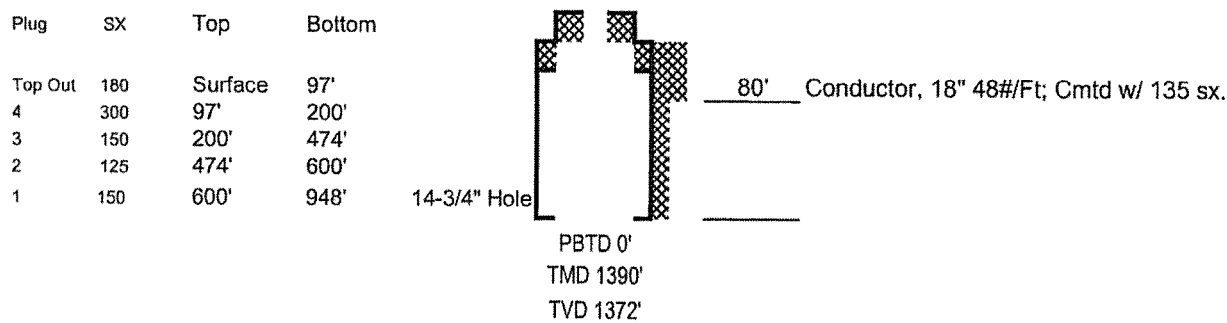
Signed: Title: Regulatory Team Lead Date: 04/05/10

OGCC Approved: Title: PE II Date: 12/22/2010

CONDITIONS OF APPROVAL, IF ANY:



Williams Production RMT Company
Federal RGU 33-6-297
API #05-103-11153-00
2409' FSL x 2218' FWL - Surface
2407' FSL x 2375' FWL - Bottom Hole Location
NESW Sec. 6 T2S R97W
Rio Blanco County, Colorado



HALLIBURTON

RECEIVED

APR 06 2010

COGCC

**WILLIAMS PRODUCTION RMT INC EBUSINE
DO NOT MAIL - PO BOX 21218
TULSA, Oklahoma**

Federal RGU
Federal RGU 33-6-297

CYCLONE/CYCLONE/14

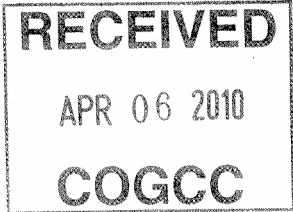
Post Job Summary Plug to Abandon Service

Prepared for:
Date Prepared: 9/12/2008
Version: 1

Service Supervisor: ESTEP, KENNETH

Submitted by: Chris Cicirello
Technical Professional

HALLIBURTON



HALLIBURTON

Cementing Job Summary

The Road to Excellence Starts with Safety

Sold To #: 300721	Ship To #: 2638358	Quote #:	Sales Order #: 5766848
Customer: WILLIAMS PRODUCTION RMT INC EBUSINE		Customer Rep: Sylva, Marco	
Well Name: Federal RGU	Well #: 433-6-297	API/UWI #:	
Field: RYAN GULCH	City (SAP): MEEKER	County/Parish: Rio Blanco	State: Colorado
Contractor: CYCLONE	Rig/Platform Name/Num: CYCLONE 14		
Job Purpose: Plug to Abandon Service			
Well Type: Development Well	Job Type: Plug to Abandon Service		
Sales Person: SCOTT, KYLE	Srvc Supervisor: ESTEP, KENNETH	MBU ID Emp #: 214387	

Job Personnel								
HES Emp Name	Exp Hrs	Emp #	HES Emp Name	Exp Hrs	Emp #	HES Emp Name	Exp Hrs	Emp #
BREIT, LARRY		0	ESTEP, KENNETH		214387	PRICE, ALLEN		0
TANNER, CHRIS		0						

Equipment							
HES Unit #	Distance-1 way	HES Unit #	Distance-1 way	HES Unit #	Distance-1 way	HES Unit #	Distance-1 way

Job Hours								
Date	On Location Hours	Operating Hours	Date	On Location Hours	Operating Hours	Date	On Location Hours	Operating Hours

TOTAL Total is the sum of each column separately

Job					Job Times			
Formation Name						Date	Time	Time Zone
Formation Depth (MD)	Top		Bottom		Called Out	22 - Mar - 2008	04:00	MST
Form Type	BHST				On Location	22 - Mar - 2008	08:30	MST
Job depth MD	400. ft	Job Depth TVD		400. ft	Job Started	22 - Mar - 2008	12:13	MST
Water Depth	Wk Ht Above Floor		2. ft		Job Completed	23 - Mar - 2008	13:09	MST
Perforation Depth (MD)	From		To		Departed Loc	23 - Mar - 2008	17:09	MST

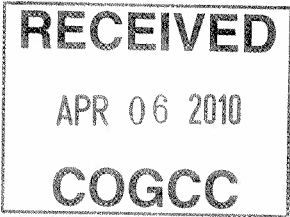
Well Data											
Description	New / Used	Max pressure psig	Size in	ID in	Weight lbm/ft	Thread	Grade	Top MD ft	Bottom MD ft	Top TVD ft	Bottom TVD ft
Upper Surface Open Hole				16.				.	400.		
2" TUBING	Unknown		2.	.				.	1000.	.	1000.

Tools and Accessories													
Type	Size	Qty	Make	Depth	Type	Size	Qty	Make	Depth	Type	Size	Qty	Make
Guide Shoe					Packer					Top Plug			
Float Shoe					Bridge Plug					Bottom Plug			
Float Collar					Retainer					SSR plug set			
Insert Float										Plug Container			
Stage Tool										Centralizers			

Miscellaneous Materials													
Gelling Agt		Conc		Surfactant		Conc		Acid Type		Qty		Conc	%
Treatment Fld		Conc		Inhibitor		Conc		Sand Type		Size		Qty	

Summit
Version:

Friday, September 12, 2008 23:33:00



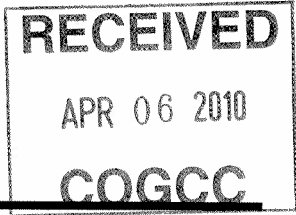
HALLIBURTON

Cementing Job Summary

Fluid Data									
Stage/Plug #: 1									
Fluid #	Stage Type	Fluid Name	Qty	Qty uom	Mixing Density lbm/gal	Yield ft3/sk	Mix Fluid Gal/sk	Rate bbl/min	Total Mix Fluid Gal/sk
1	Water Spacer		2.00	bbl	8.34	.0	.0	.0	
2	TYPE III BLENDED	CMT - STANDARD TYPE III - FINE (100012229)	300.0	sacks	12.8	1.96	10.64		10.61
	94 lbm	CMT - STANDARD TYPE III - FINE , BULK (100012229)							
	1 %	CAL-SEAL 60, 50 LB BAG (101217146)							
	1 %	ECONOLITE (100001580)							
	3 lbm	GILSONITE, BULK (100003700)							
	0.25 lbm	POLY-E-FLAKE (101216940)							
	0.3 %	VERSASET, 55 LB SK (101376573)							
	0.25 %	D-AIR 3000 (101007446)							
	10.606 Gal	FRESH WATER							
3	15.6 PPG TYPE V	CMT - STANDARD CEMENT (100003684)	125.0	sacks	15.6	1.2	5.2	2.0	5.26
	94 lbm	CMT - STANDARD - CLASS A REG OR TYPE I, BULK (100003684)							
	2 %	CALCIUM CHLORIDE - HI TEST PELLET (100005053)							
	0.125 lbm	POLY-E-FLAKE (101216940)							
	5.258 Gal	FRESH WATER							
4	TOP OUT III	CMT - STANDARD TYPE III - FINE (100012229)	150.0	sacks	14.5	1.41	6.86		6.86
	94 lbm	CMT - STANDARD TYPE III - FINE , BULK (100012229)							
	2 %	CALCIUM CHLORIDE - HI TEST PELLET (100005053)							
	6.855 Gal	FRESH WATER							
5	TYPE V	CMT - CLASS G, 94 LB (100064007)		Liquid Volume	15.63	1.19	5.2	2.0	5.2
	94 lbm	CMT - CLASS G, 94 LB (100064007)							
	2 %	CALCIUM CHLORIDE - HI TEST PELLET (100005053)							
	0.125 lbm	POLY-E-FLAKE (101216940)							
	5.2 Gal	FRESH WATER							
Calculated Values		Pressures		Volumes					
Displacement		Shut In: Instant		Lost Returns		Cement Slurry		Pad	
Top Of Cement		5 Min		Cement Returns		Actual Displacement		Treatment	
Frac Gradient		15 Min		Spacers		Load and Breakdown		Total Job	
Rates									
Circulating		Mixing		Displacement		Avg. Job			
Cement Left In Pipe	Amount	0 ft	Reason	Shoe Joint					
Frac Ring # 1 @	ID	Frac ring # 2 @	ID	Frac Ring # 3 @	ID	Frac Ring # 4 @	ID		
The Information Stated Herein Is Correct				Customer Representative Signature					

Summit
Version:

Friday, September 12, 2008 23:33:00



HALLIBURTON
Service Supervisor Reports

Job Log

Date/Time	Chart #	Activity Code	Pump Rate	Cum Vol	Pump		Pressure (psig)		Comments
03/22/2008 04:00		Call Out							
03/22/2008 05:15		Safety Huddle							
03/22/2008 05:30		Depart from Service Center or Other Site							
03/22/2008 08:30		Arrive at Location from Service Center							
03/22/2008 08:40		Safety Huddle							
03/22/2008 09:00		Rig-Up Equipment							
03/22/2008 12:00		Safety Huddle							
03/22/2008 12:15		Pressure Test						3000.0	
03/22/2008 12:16		Pump Water	1	2				400.0	
03/22/2008 12:18		Pump Cement	2	52				200.0	
03/22/2008 12:37		Other							SHUT DOWN-SWAP OUT CEMENT TRUCKS
03/22/2008 12:48		Other	2					400.0	RESUME PUMPING
03/22/2008 13:04		Pump Water	2	1				450.0	
03/22/2008 13:06		Other							SHUT DOWN
03/22/2008 13:07		Other							BREAK OFF IRON- RIG PULLS UP
03/22/2008 13:18		Pump Water	1	2					
03/22/2008 13:20		Other							WAIT 2 HOURS
03/22/2008 15:20		Safety Huddle							
03/22/2008 15:30		Pump Water	2	2				300.0	
03/22/2008 15:31		Pump Cement	2	26.7				270.0	
03/22/2008 15:37		Other	2					425.0	
03/22/2008 15:43		Pump Water	2	1				350.0	
03/22/2008 15:45		Other							SHUT DOWN
03/22/2008 16:04		Pump Water	2	2				200.0	

HALLIBURTON

Date/Time	Chart #	Activity Code	Pump Rate	Cum Vol	Pump		Pressure (psig)	Comments
03/22/2008 16:06		Other						SHUT DOWN-BREAK OFF IRON-RIG PULLS UP
03/22/2008 16:16		Pump Water	2	2				
03/22/2008 16:18		Other						WAIT ON RIG
03/22/2008 18:03		Safety Huddle						<div>RECEIVED</div> <div>APR 06 2010</div> <div>COGCC</div>
03/22/2008 18:09		Pump Water	1	2			290.0	
03/22/2008 18:13		Pump Cement	2	37.7			180.0	
03/22/2008 18:37		Pump Water	2	1			300.0	
03/22/2008 18:39		Other						SHUT DOWN-BREAK OFF IRON-RIG PULLS UP
03/22/2008 18:50		Pump Water	2	2			200.0	
03/22/2008 18:51		Other						SHUT DOWN-WASH TRUCK TO PIT-DRAIN-BLOW OUT LINES-WAIT 4 HOURS
03/23/2008 01:56		Pump Water	2	2			90.0	
03/23/2008 02:01		Pump Cement	2	37.7			90.0	
03/23/2008 02:18		Pump Cement	2	37			170.0	
03/23/2008 02:42		Other						SHUT DOWN-WASH TRUCK TO PIT-ORDER MORE CEMENT
03/23/2008 12:30		Other						CEMENT ON LOCATION
03/23/2008 12:40		Safety Huddle						
03/23/2008 12:52		Pump Water	2	2			100.0	
03/23/2008 12:54		Pump Cement	2	40			100.0	
03/23/2008 13:04		Slow Rate	1.5				75.0	
03/23/2008 13:06		Other	2				103.0	UP RATE
03/23/2008 13:09		Other						SHUT DOWN-CEMENT TO SURFACE
03/23/2008 13:10		Safety Huddle						
03/23/2008 13:20		Other						WASH TRUCK AND IRON TO PIT
03/23/2008 15:00		Other						RELEASED BY COMPANY MAN
03/23/2008 15:05		Safety Huddle						
03/23/2008 15:15		Rig-Down Equipment						

HALLIBURTON

Date/Time	Chart #	Activity Code	Pump Rate	Cum Vol	Pump		Pressure (psig)		Comments
03/23/2008 16:30		Depart Location Safety Meeting							
03/23/2008 17:30		Depart Location for Service Center or Other Site							

RECEIVED

APR 06 2010

COGCC

HALLIBURTON

Wellbore Geometry

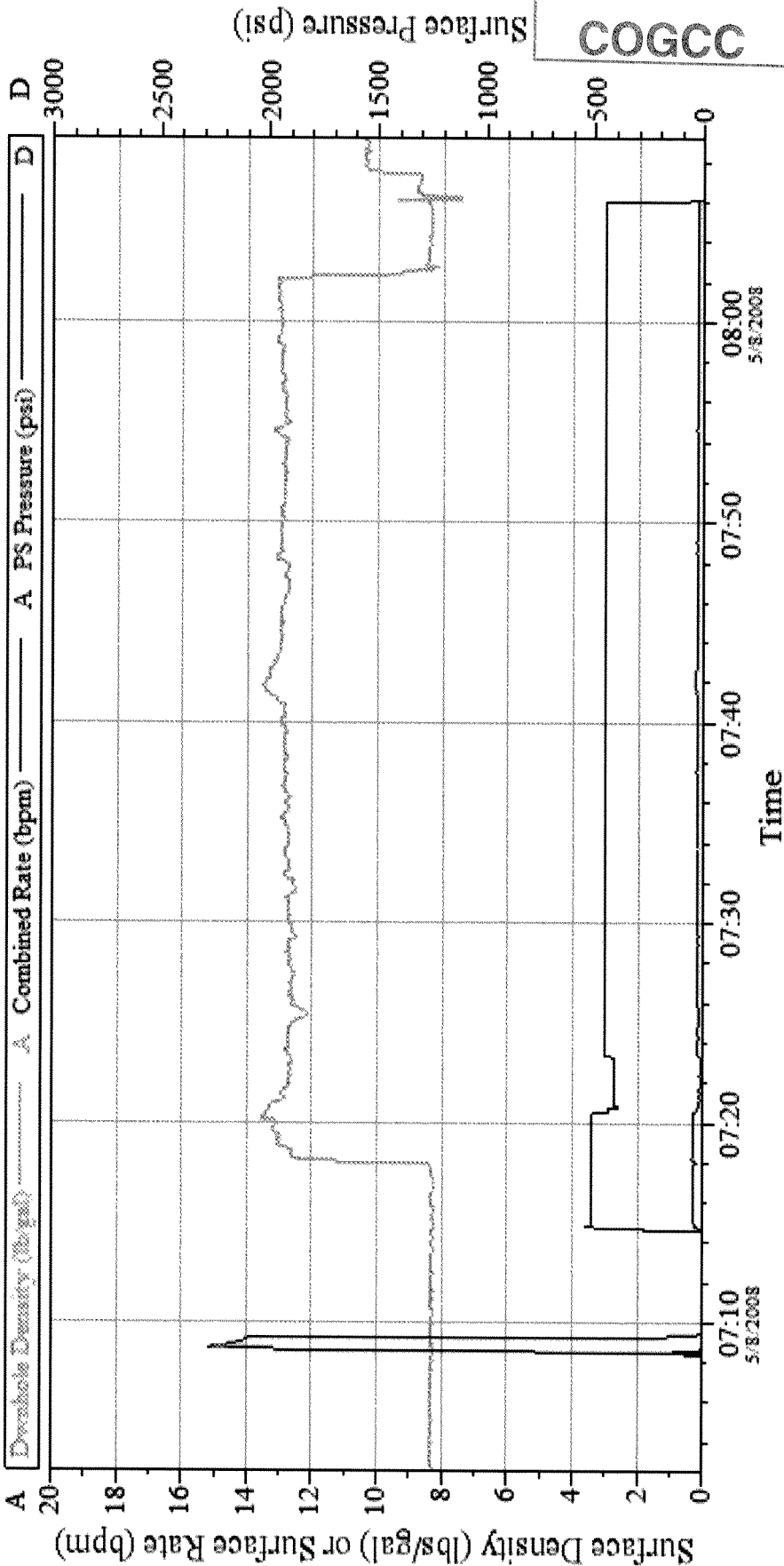
RECEIVED
APR 06 2010
COGCC

Job Tubulars					MD		TVD		Excess	Shoe Joint Length
Type	Description	Size in	ID in	Wt lbm/ft	Top ft	Bottom ft	Top ft	Bottom ft	%	ft
Open Hole Section	Upper Surface Open Hole		16.000		0.00	400.00			0.00	0.00
Tubing	2" TUBING	2.00	.000		0.00	1,000.00	0.00	1,000.00	0.00	

HALLIBURTON

Data Acquisition

WILLIAMS PLUG #1 CEMENT



RECEIVED

APR 06 2010

COGCC

CamWin v1.7.0
08-May-08 08:41

Customer: JOE HONEYCUT
Well Desc: RGU 433-6-297

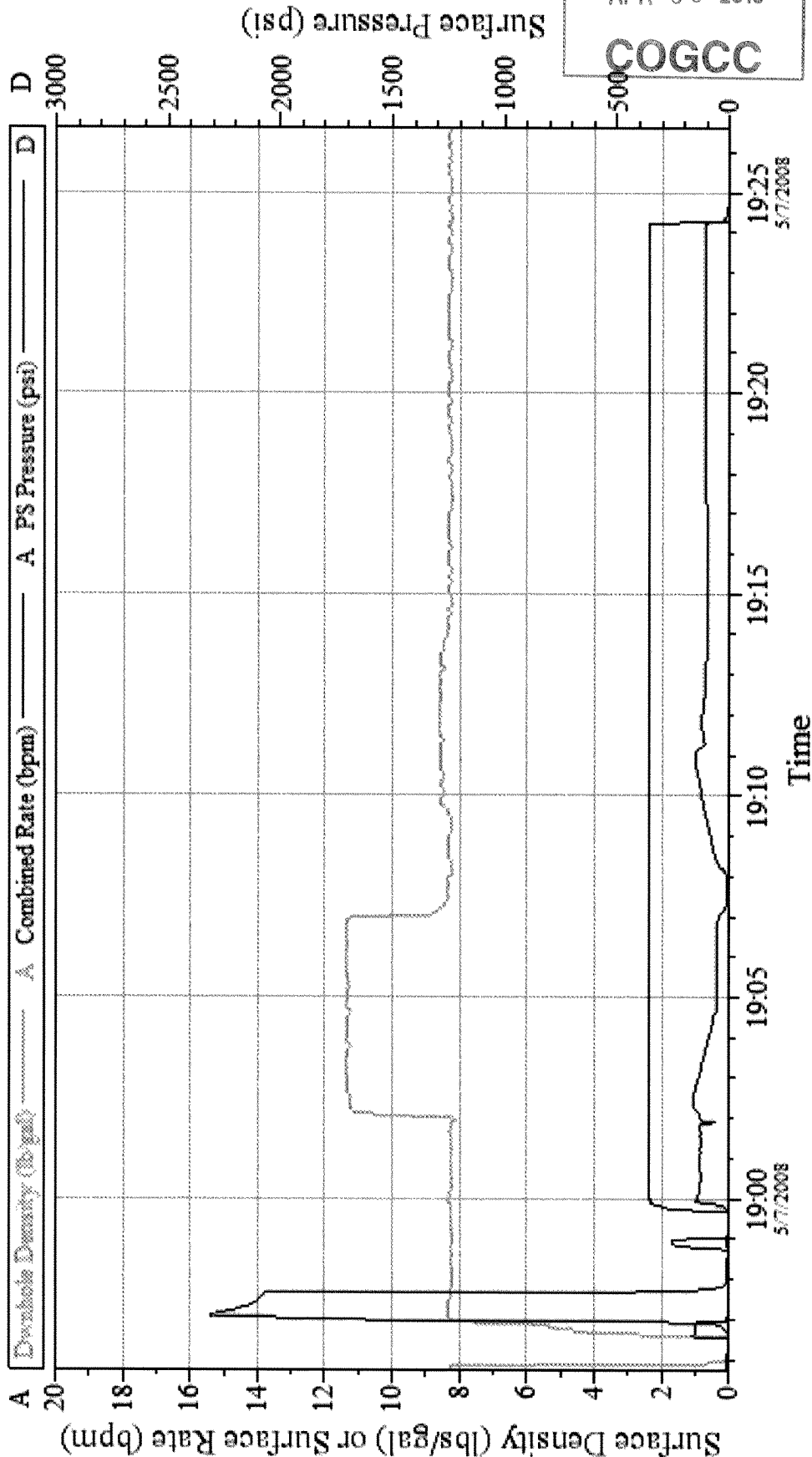
Job Date: 5-7-08

Job Type: LOST CIRCULATION PLUG

Ticket #: 5873254

HALLIBURTON

WILLIAMS
PLUG #1



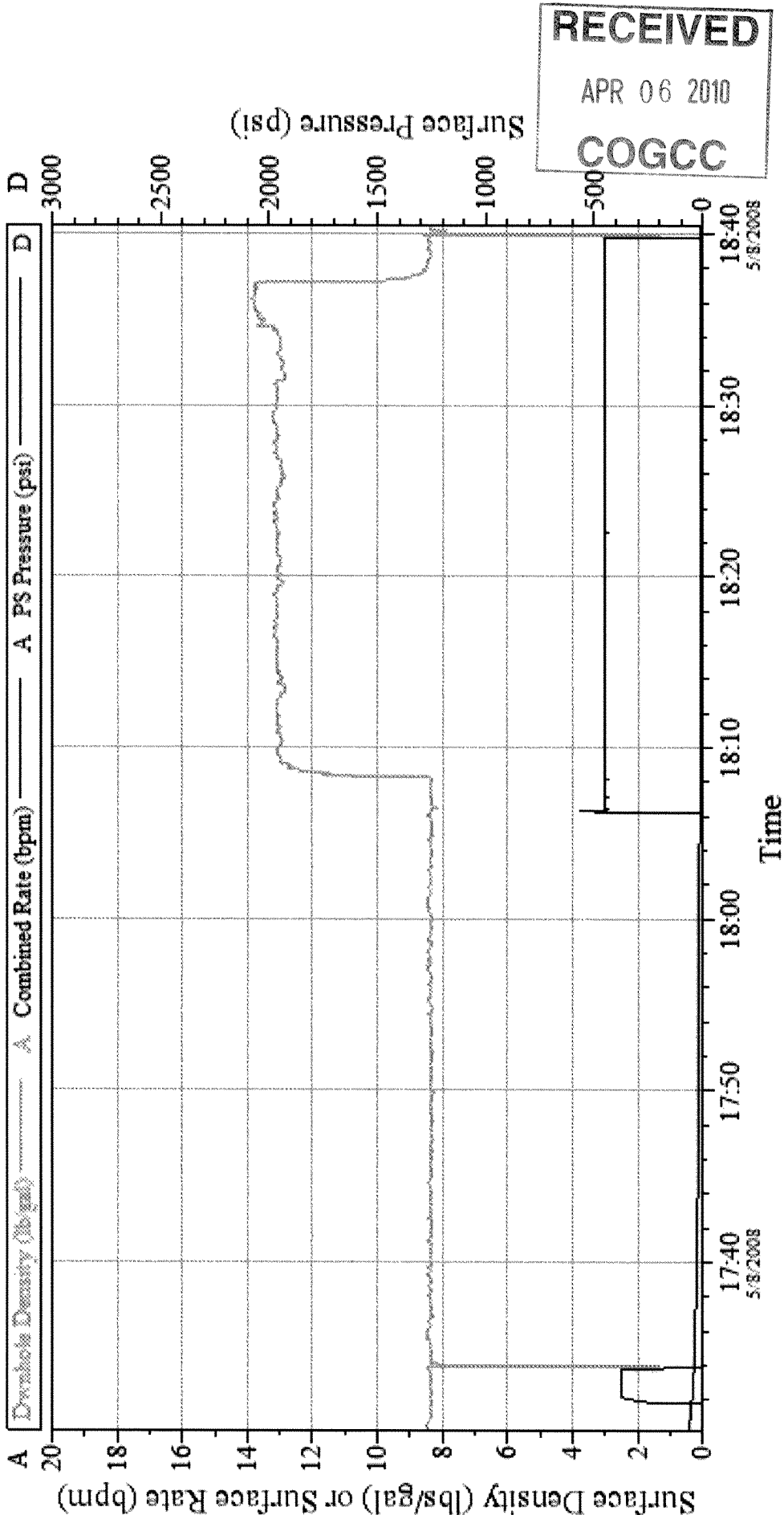
RECEIVED
APR 06 2010
COGCC

Customer: JOE HONEYCUT Well Desc: RGU 433-6-297	Job Date: 5-7-08 Job Type: LOST CIRCULATION PLUG	Ticket #: 5873254
--	---	-------------------

CamWin v1.7.0
07-May-08 20:49

HALLIBURTON

WILLIAMS
PLUG #2 CEMENT



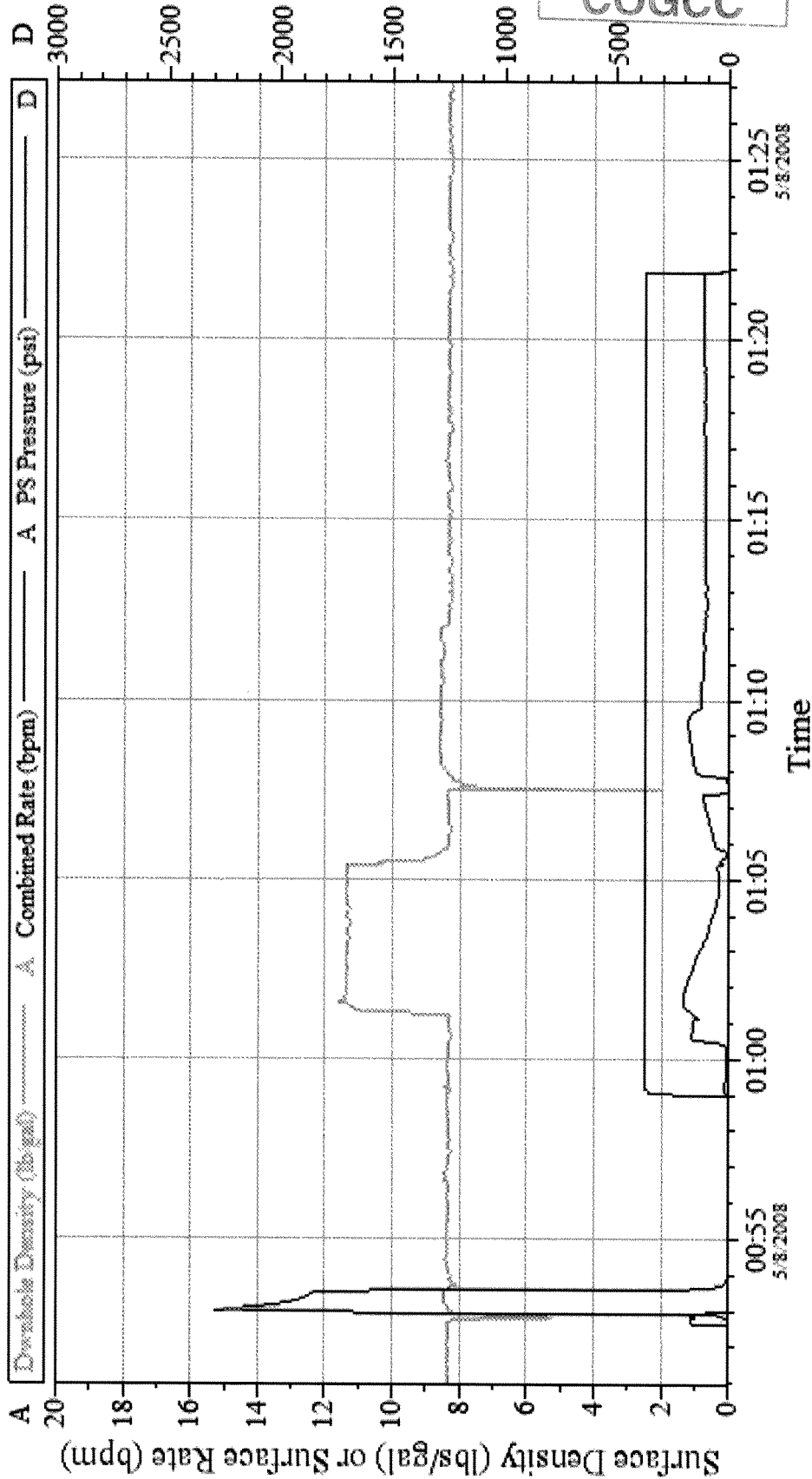
RECEIVED
APR 06 2010
COGCC

Customer: JOE HONEYCUT Well Desc: RGU 433-6-297	Job Date: 5-7-08 Job Type: LOST CIRCULATION PLUG	Ticket #: 5873254
--	---	-------------------

CemWin v1.7.0
08-May-08 19:05

HALLIBURTON

WILLIAMS PLUG #3



RECEIVED
APR 06 2010
COGCC

Customer: JOE HONEYCUT	Job Date: 5-7-08	Ticket #: 5873254
Well Desc: RGU 433-6-297	Job Type: LOST CIRCULATION PLUG	

CemWin v1.7.0
08-May-08 03:01