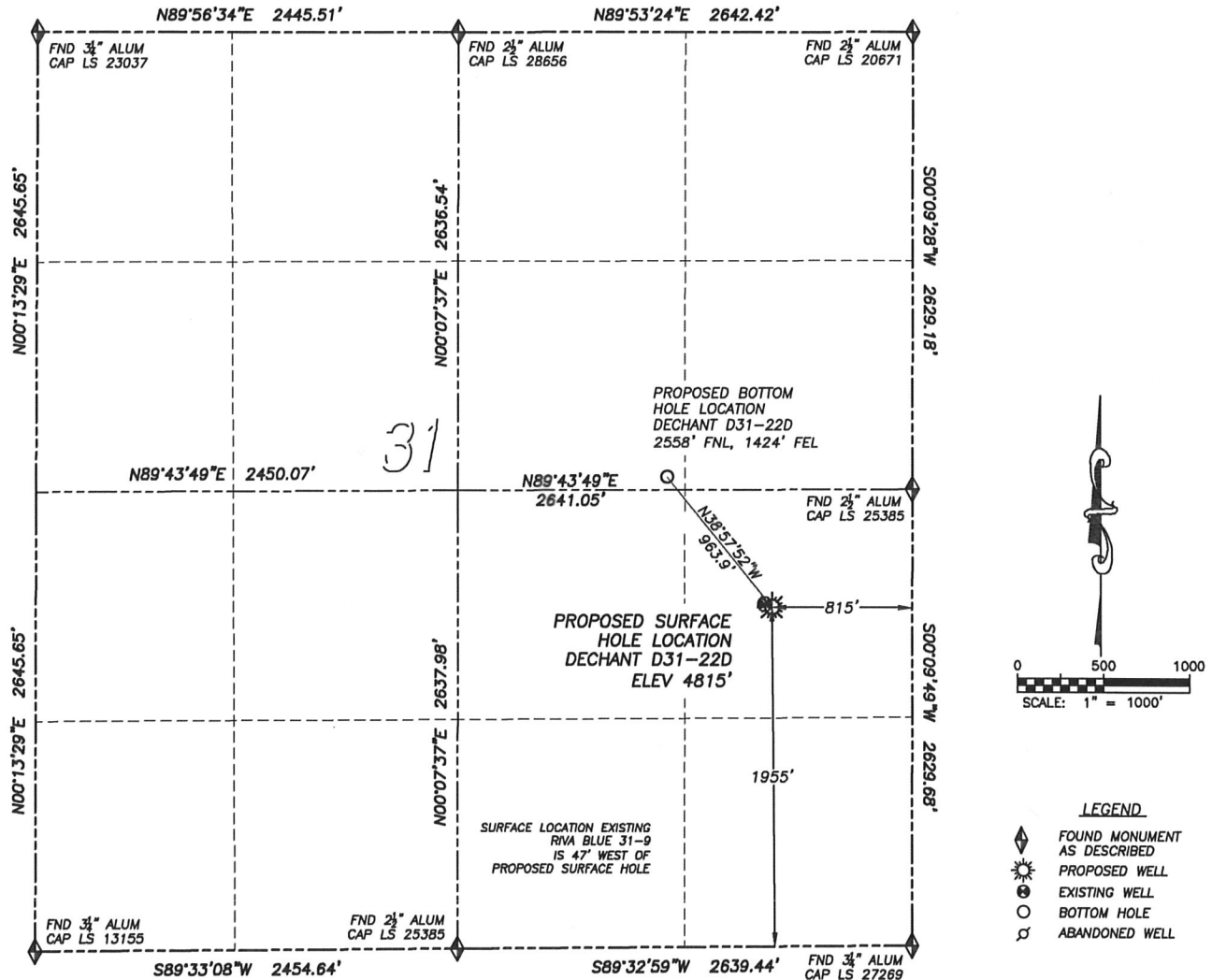


WELL LOCATION CERTIFICATE

DECHANT D31-22D

SECTION 31, TOWNSHIP 3 NORTH, RANGE 64 WEST OF THE 6TH PRINCIPAL MERIDIAN

**NAD 83 LATITUDE AND LONGITUDE****DECHANT D31-22D SURFACE HOLE:**

LATITUDE: N40.17981°
 LONGITUDE: W104.58756°
 ELEVATION: 4815'
 FOOTAGE: 1955' FSL, 815' FEL
 PDOP: 2.0
 QTR/QTR: NE4/SE4
 PROP LINE: 675'± NORTH

BOTTOM HOLE:

LATITUDE: N40.18187°
 LONGITUDE: W104.58973°
 FOOTAGE: 2558' FNL, 1424' FEL

NEAREST EXISTING WELL:

RIVA BLUE 31-9 SURFACE HOLE
 LATITUDE: N40.17986°
 LONGITUDE: W104.58771°
 ELEVATION: 4815'
 47' WEST

IN ACCORDANCE WITH A REQUEST FROM SEAN CASPER OF NOBLE ENERGY INC., DALEY LAND SURVEYING, INC. HAS DETERMINED THE SURFACE LOCATION OF THE DECHANT D31-22D WELL TO BE 1955' FSL, 815' FEL, AS MEASURED AT NINETY (90) DEGREES FROM THE SECTION LINES OF SECTION 31, TOWNSHIP 3 NORTH, RANGE 64 WEST OF THE 6TH PRINCIPAL MERIDIAN, WELD COUNTY, COLORADO. THE BOTTOM HOLE LOCATION, PROVIDED BY THE CLIENT, IS TO BE 2558' FNL, 1424' FEL.

I HEREBY CERTIFY THAT THIS WELL LOCATION CERTIFICATE WAS PREPARED BY ME OR UNDER MY DIRECT SUPERVISION, THAT THE WORK WAS COMPLETED ON 10/14/2010 FOR AND ON BEHALF OF NOBLE ENERGY, INC., AND THAT THIS MAP DOES NOT REPRESENT A BOUNDARY SURVEY. IT IS NOT A LAND SURVEY PLAT OR AN IMPROVEMENT SURVEY PLAT AND IT IS NOT TO BE RELIED UPON FOR THE ESTABLISHMENT OF FENCE, BUILDING OR OTHER FUTURE IMPROVEMENT LINES.

NOTES:

- 1) BEARINGS FOR THIS MAP ARE ASSUMED AND BASED UPON GPS OBSERVATIONS MADE BETWEEN MONUMENTS LOCATED AT THE SOUTHEAST CORNER AND EAST QUARTER CORNER OF SECTION 31, T.3N., R.64W.
- 2) HORIZONTAL DATUM IS NAD83.
- 3) VERTICAL DATUM IS NAVD88. ELEVATIONS ARE DERIVED FROM GPS OBSERVATIONS PROCESSED THROUGH OPUS, UTILIZING THE GEOID03 MODEL.
- 4) SEE LOCATION DRAWING FOR VISIBLE IMPROVEMENTS WITHIN 600' OF PROPOSED SURFACE HOLE LOCATION.
- 5) SURFACE USE: PASTURE.

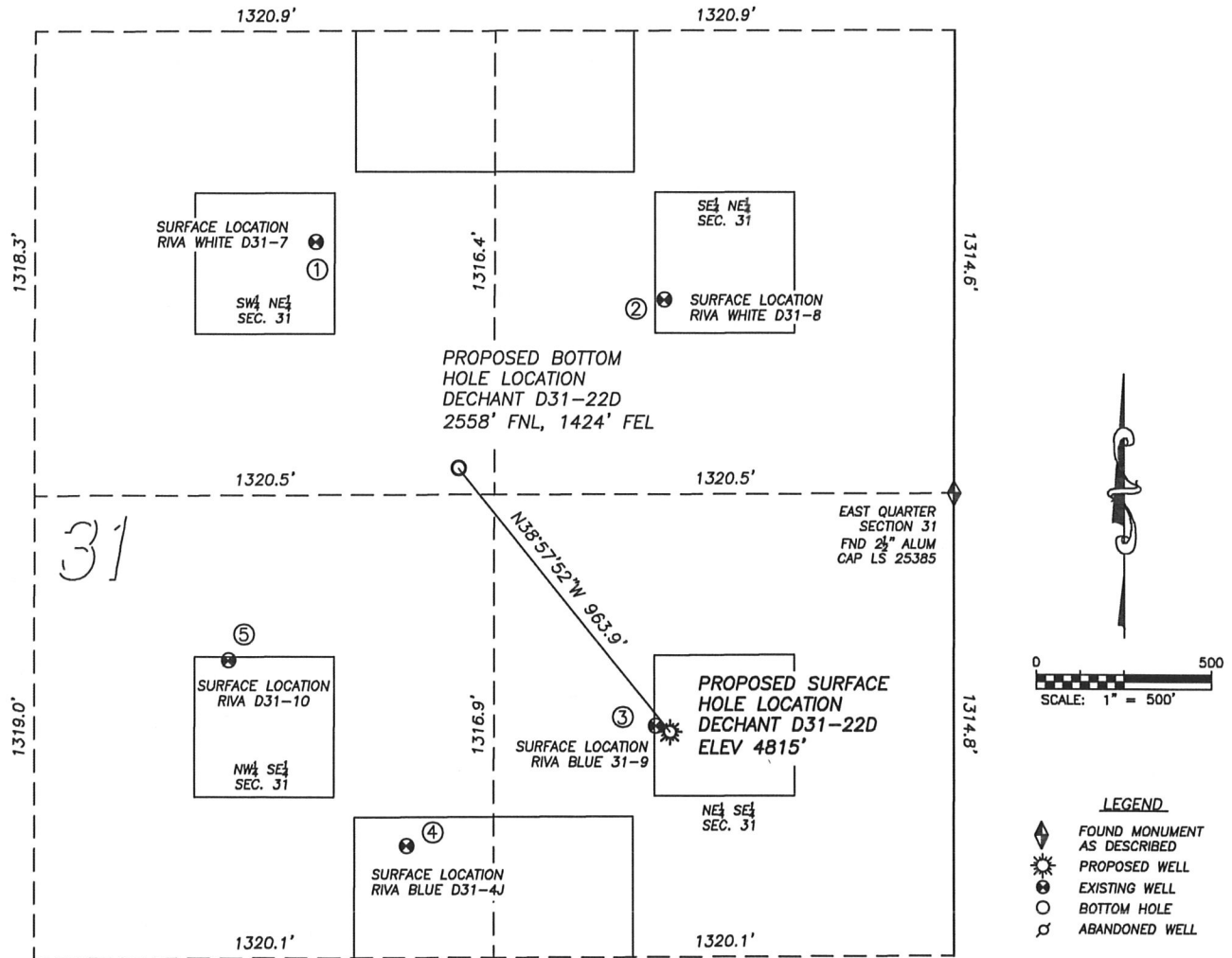
NOTICE: According to Colorado law you MUST commence any legal action based upon any defect in this W.L.C. within three years after you first discover such defect. In no event may any action based upon any such defect in this W.L.C. be commenced more than ten years from the date of the certification shown hereon.

FOR AND ON BEHALF OF
 DALEY LAND SURVEYING INC.,
 Robert Daley, PLS 35597



SITE SKETCH DECHANT D31-22D

SECTION 31, TOWNSHIP 3 NORTH, RANGE 64 WEST OF THE 6TH PRINCIPAL MERIDIAN



①

RIVA WHITE D31-7
SW/NE SEC. 31
1915' FNL, 1835' FEL
761' NW OF PROPOSED
BOTTOM HOLE LOCATION
LAT. N40.18363°
LONG. W104.59119°
EL: 4805'
PDOP 2.6

②

RIVA WHITE D31-8
SE/NE SEC. 31
2079' FNL, 834' FEL
761' NE OF PROPOSED
BOTTOM HOLE LOCATION
LAT. N40.18319°
LONG. W104.58761°
EL: 4808'
PDOP 2.0

③

RIVA BLUE 31-9
NE/SE SEC. 31
1973' FSL, 857' FEL
924' SE OF PROPOSED
BOTTOM HOLE LOCATION
LAT. N40.17986°
LONG. W104.58771°
EL: 4815'
PDOP 2.8

④

RIVA BLUE D31-4J
NW/SE SEC. 31
1635' FSL, 1570' FEL
1085' SW OF PROPOSED
BOTTOM HOLE LOCATION
LAT. N40.17892°
LONG. W104.59027°
EL: 4821'
PDOP 1.8

⑤

RIVA D31-10
NW/SE SEC. 31
2167' FSL, 2084' FEL
859' SW OF PROPOSED
BOTTOM HOLE LOCATION
LAT. N40.18037°
LONG. W104.59210°
EL: 4809'
PDOP 1.8

NOTES:

- 1) THIS DOES NOT REPRESENT A BOUNDARY SURVEY
- 2) THE LATITUDES AND LONGITUDES SHOWN ARE REFERENCED TO NAD83
- 3) DATUM FOR ELEVATION IS NAVD88. ELEVATIONS ARE DERIVED FROM GPS-RTK OBSERVATIONS PROCESSED THROUGH OPUS, UTILIZING THE GEOID03 MODEL

PAD DETAIL

SURFACE LOCATION
RIVA BLUE 31-9

PROPOSED
DECHANT D31-22D

CENTERLINE
ACCESS ROAD

WELL SPACING
47' SPACING BETWEEN PROPOSED
DECHANT D31-22D AND
EXISTING RIVA BLUE 31-9