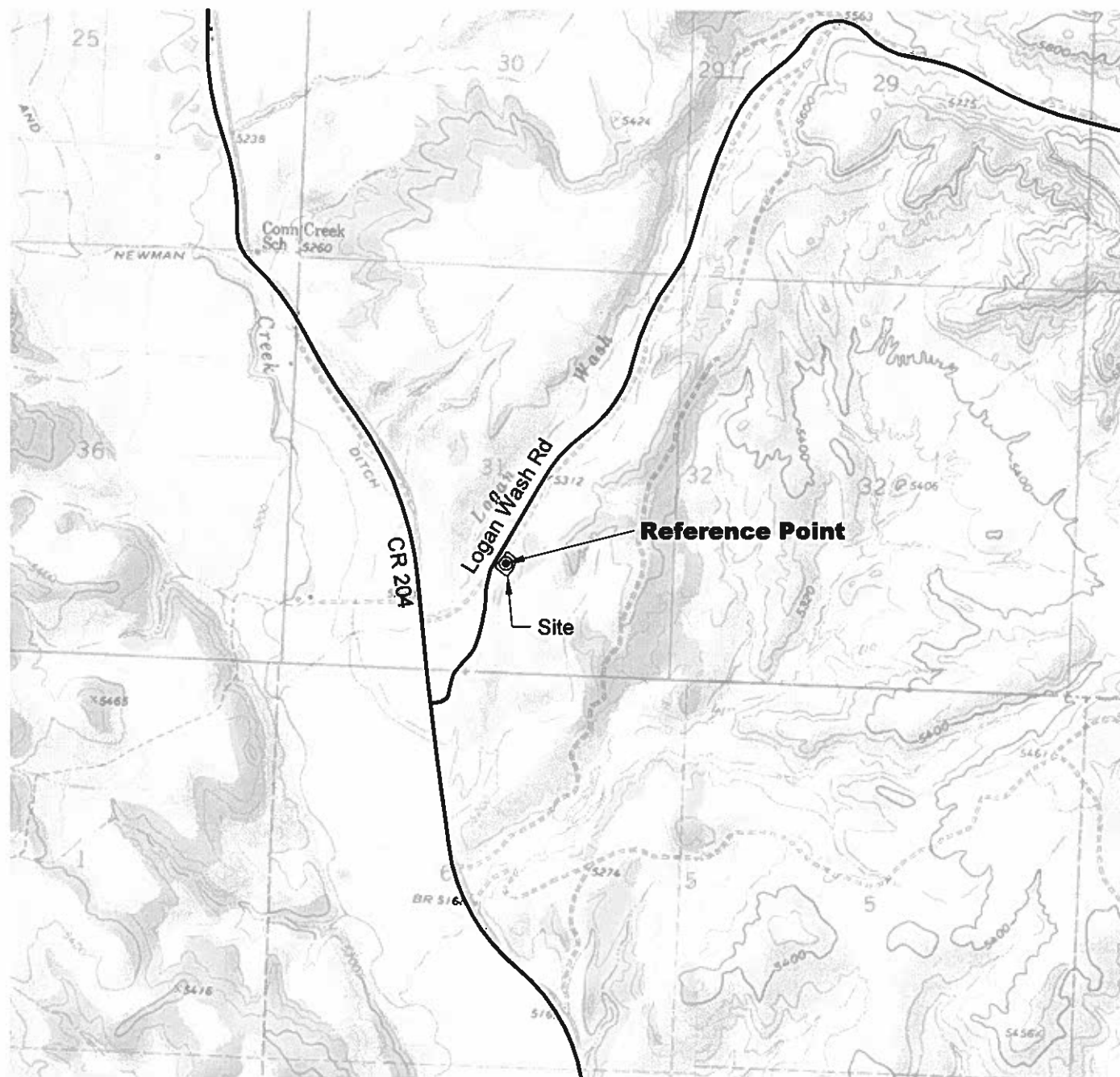


ACCESS ROAD MAP



DRIVING DIRECTIONS:

From I-70 Exit 62, the exit to DeBeque and the intersection of Roan Creek Road and I-70, travel north along Roan Creek Road, passing by the Town of DeBeque, asphalt surface.

MP 3.95 - Mesa County / Garfield County line Garfield County Road 204.

MP 6.1 - T intersection with private gravel road known as Logan Wash Road. Turn right onto Logan Wash Road, gravel surface.

MP 6.5 - access to Logan Wash 28-10 Salt Water Disposal Facility, bear right onto pad.

12/20/10



0 2000 4000

Graphic Scale in Feet
1 Inch = 2000 feet



LAND SURVEYING AND MAPPING
LAFAYETTE - WINTER PARK
Ph 303 666 0379 Fx 303 665 6320

OXY USA WTP LP
LOGAN WASH 28-10 SALT WATER
DISPOSAL FACILITY

NW1/4 SE1/4 SECTION 31 T7S R97W
6th PM GARFIELD COUNTY COLORADO