

---

# **SAMSON RESOURCES CORP - EBUS**

---

**Southern Ute 33-9-36 #4  
IGNACIO / BLANCO  
La Plata County , Colorado**

**Cement Surface Casing**  
**18-Oct-2010**

**Job Site Documents**

## The Road to Excellence Starts with Safety

<b>Sold To #:</b> 345114		<b>Ship To #:</b> 2813873		<b>Quote #:</b>		<b>Sales Order #:</b> 7712644	
<b>Customer:</b> SAMSON RESOURCES CORP - EBUS				<b>Customer Rep:</b> Seidel, Frank			
<b>Well Name:</b> Southern Ute			<b>Well #:</b> 33-9-36 #4			<b>API/UWI #:</b>	
<b>Field:</b> IGNACIO / BLANCO		<b>City (SAP):</b> IGNACIO		<b>County/Parish:</b> La Plata		<b>State:</b> Colorado	
<b>Legal Description:</b> Section 3 Township 32N Range 7W							
<b>Contractor:</b> AWS			<b>Rig/Platform Name/Num:</b> AWS 507				
<b>Job Purpose:</b> Cement Surface Casing							
<b>Well Type:</b> Development Well				<b>Job Type:</b> Cement Surface Casing			
<b>Sales Person:</b> SCOTT, KYLE				<b>Srvc Supervisor:</b> PONDER, THOMAS		<b>MBU ID Emp #:</b> 427112	

### Job Personnel

HES Emp Name	Exp Hrs	Emp #	HES Emp Name	Exp Hrs	Emp #	HES Emp Name	Exp Hrs	Emp #
AXT, STEPHEN Gary	5.5	434802	PONDER, THOMAS Lynn	5.5	427112	SLAUGHTER, JESSE Dean	5.5	454315

### Equipment

HES Unit #	Distance-1 way	HES Unit #	Distance-1 way	HES Unit #	Distance-1 way	HES Unit #	Distance-1 way
10025104	50 mile	10811442	50 mile	10871245	50 mile	10897805	50 mile
11360881	50 mile						

### Job Hours

Date	On Location Hours	Operating Hours	Date	On Location Hours	Operating Hours	Date	On Location Hours	Operating Hours
10/18/2010	4	1	10/19/2010	1.5	0			

**TOTAL** Total is the sum of each column separately

### Job

Formation Name					Date				Time		Time Zone				
Formation Depth (MD)		Top		Bottom		Called Out			18 - Oct - 2010		16:00		MST		
Form Type		BHST		On Location			18 - Oct - 2010		20:00		MST				
Job depth MD		363.2 ft		Job Depth TVD		363.2 ft		Job Started		18 - Oct - 2010		23:12		MST	
Water Depth		Wk Ht Above Floor		4. ft		Job Completed		18 - Oct - 2010		23:48		MST			
Perforation Depth (MD)		From		To		Departed Loc			19 - Oct - 2010		01:30		MST		

### Well Data

Description	New / Used	Max pressure psig	Size in	ID in	Weight lbm/ft	Thread	Grade	Top MD ft	Bottom MD ft	Top TVD ft	Bottom TVD ft
12-1/4" Open Hole				12.25				.	370.		
8-5/8" Surface Casing	Unknown		8.625	7.921	32.			.	363.3		

### Sales/Rental/3<sup>rd</sup> Party (HES)

Description	Qty	Qty uom	Depth	Supplier
PLUG,CMTG,TOP,8 5/8,HWE,7.20 MIN/8.09 MA	1	EA		
SUGAR, GRANULATED, IMPERIAL	100	LB		

### Tools and Accessories

Type	Size	Qty	Make	Depth	Type	Size	Qty	Make	Depth	Type	Size	Qty	Make
Guide Shoe					Packer					Top Plug	8 5/8	1	HES
Float Shoe					Bridge Plug					Bottom Plug			
Float Collar					Retainer					SSR plug set			
Insert Float										Plug Container	8 5/8	1	HES
Stage Tool										Centralizers			

### Miscellaneous Materials

Gelling Agt	Conc	Surfactant	Conc	Acid Type	Qty	Conc	%
Treatment Fld	Conc	Inhibitor	Conc	Sand Type	Size	Qty	

### Fluid Data

**Stage/Plug #: 1**

Fluid #	Stage Type	Fluid Name	Qty	Qty uom	Mixing Density lbm/gal	Yield ft <sup>3</sup> /sk	Mix Fluid Gal/sk	Rate bbl/min	Total Mix Fluid Gal/sk
1	Water Spacer		10.00	bbl	8.33	.0	.0	.0	
2	Surface Cement	CMT - PREMIUM - CLASS G, 94 LB SK (100003685)	265.0	sacks	15.8	1.17	5.0		5.0
	94 lbm	CMT - PREMIUM - CLASS G REG OR TYPE V, BULK (100003685)							
	2 %	CALCIUM CHLORIDE - HI TEST PELLET (100005053)							
	0.125 lbm	POLY-E-FLAKE (101216940)							
	4.998 Gal	FRESH WATER							
3	Displacement		20.00	bbl	8.33	.0	.0	.0	
Calculated Values		Pressures		Volumes					
Displacement	20.2	Shut In: Instant		Lost Returns	0	Cement Slurry	55.2	Pad	
Top Of Cement	SURFACE	5 Min		Cement Returns	10	Actual Displacement	20.2	Treatment	
Frac Gradient		15 Min		Spacers	10	Load and Breakdown		Total Job	90
Rates									
Circulating	6	Mixing	6	Displacement	4	Avg. Job	6		
Cement Left In Pipe	Amount	42 ft	Reason	Shoe Joint					
Frac Ring # 1 @	ID	Frac ring # 2 @	ID	Frac Ring # 3 @	ID	Frac Ring # 4 @	ID		
The Information Stated Herein Is Correct				Customer Representative Signature					

*The Road to Excellence Starts with Safety*

<b>Sold To #:</b> 345114	<b>Ship To #:</b> 2813873	<b>Quote #:</b>	<b>Sales Order #:</b> 7712644
<b>Customer:</b> SAMSON RESOURCES CORP - EBUS		<b>Customer Rep:</b> Seidel, Frank	
<b>Well Name:</b> Southern Ute	<b>Well #:</b> 33-9-36 #4	<b>API/UWI #:</b>	
<b>Field:</b> IGNACIO / BLANCO	<b>City (SAP):</b> IGNACIO	<b>County/Parish:</b> La Plata	<b>State:</b> Colorado
<b>Legal Description:</b> Section 3 Township 32N Range 7W			
<b>Lat:</b>		<b>Long:</b>	
<b>Contractor:</b> AWS		<b>Rig/Platform Name/Num:</b> AWS 507	
<b>Job Purpose:</b> Cement Surface Casing			<b>Ticket Amount:</b>
<b>Well Type:</b> Development Well		<b>Job Type:</b> Cement Surface Casing	
<b>Sales Person:</b> SCOTT, KYLE		<b>Srvc Supervisor:</b> PONDER, THOMAS	<b>MBU ID Emp #:</b> 427112

Activity Description	Date/Time	Cht #	Rate bbl/min	Volume bbl		Pressure psig		Comments
				Stage	Total	Tubing	Casing	
Call Out	10/18/2010 16:00							
Crew Leave Yard	10/18/2010 18:00							ALL HES PRESENT FOR PRE-CONVOY SAFETY HUDDLE
Arrive At Loc	10/18/2010 20:00							RIG WAS STILL RUNNING CASING WHEN CREW ARRIVED ON LOCATION
Assessment Of Location Safety Meeting	10/18/2010 21:00							TD- 370', TP- 363.26', SJ- 45.0', MUD- 8.5 PPG, HOLE- 12 1/4", SURFACE CASING- 8 5/8" 24# J-55
Rig-Up Equipment	10/18/2010 21:30							RIG STARTED CIRCULATION ON BOTTOM @
Safety Meeting	10/18/2010 22:30							ALL HES PRESENT, RIG CREW PRESENT
Other	10/18/2010 23:12		2	2			30.0	FILL LINES
Start Job	10/18/2010 23:12							
Test Lines	10/18/2010 23:15		0.5	0.5			3650.0	
Pump Spacer 1	10/18/2010 23:19		6	10			236.0	FRESH WATER
Pump Tail Cement	10/18/2010 23:27		6	55.2			284.0	265 SKS 15.8 PPG 1.17 FT3/SK 5.0 GAL/SK
Shutdown	10/18/2010 23:35							
Activity Description	Date/Time	Cht	Rate bbl/min	Volume bbl		Pressure psig		Comments

Sold To # : 345114

Ship To # :2813873

Quote # :

Sales Order # : 7712644

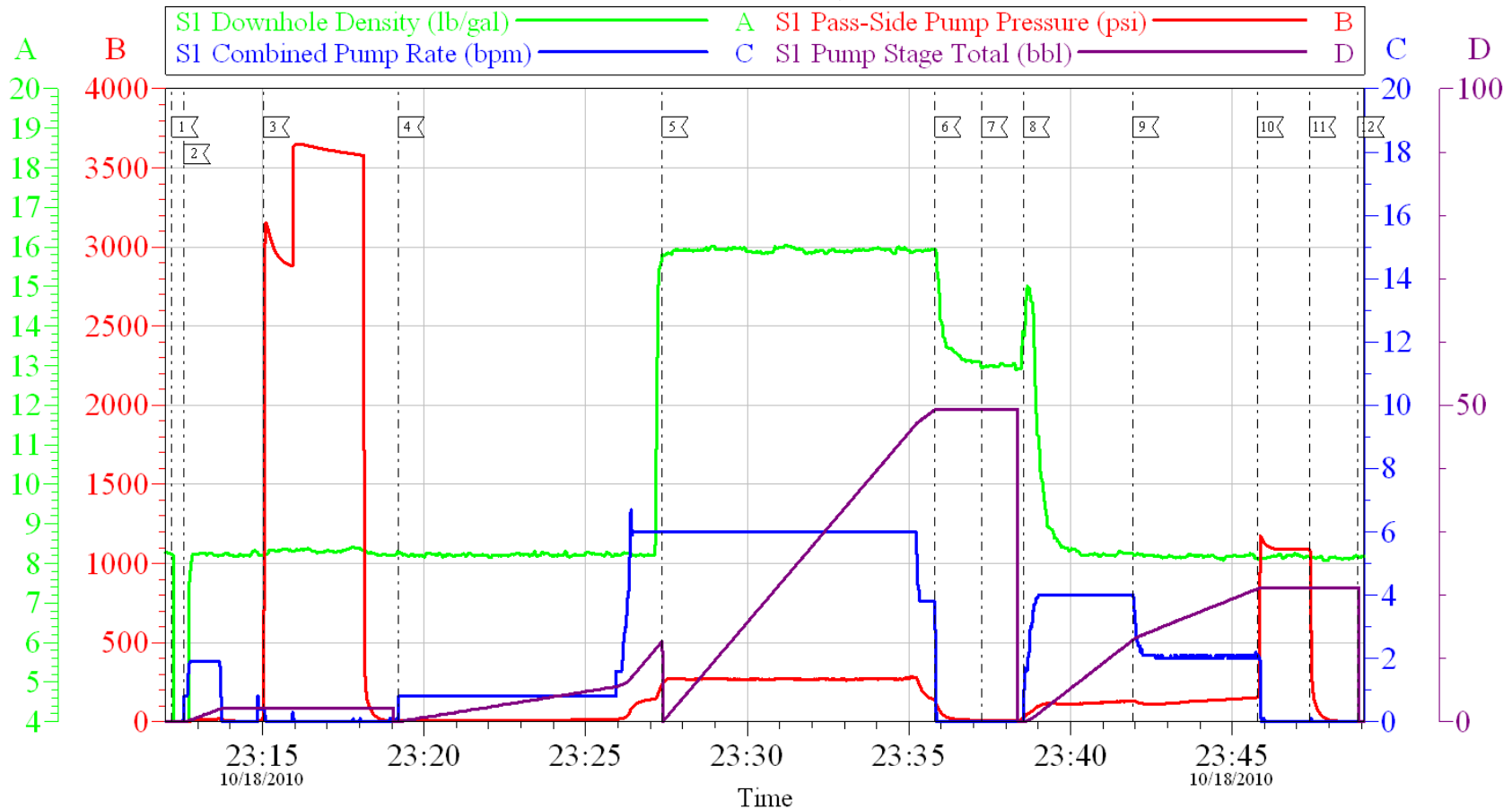
SUMMIT Version: 7.20.130

Tuesday, October 19, 2010 12:16:00

		#		Stage	Total	Tubing	Casing	
Drop Plug	10/18/2010 23:37							PLUG DROP VERIFIED VIA TATTLE TELL WITH POSITIVE DISPLACEMENT PLUG CONTAINER
Pump Displacement	10/18/2010 23:38		4	20.2			131.0	FRESH WATER
Slow Rate	10/18/2010 23:41		2	10.2			110.0	10 BBL OF GOOD CEMENT TO SURFACE
Bump Plug	10/18/2010 23:45		2	20.2			153.0	PLUG BUMPED
Check Floats	10/18/2010 23:47						1087. 0	FLOATS HELD, 1/4 BBL BACK TO THE DISPLACEMENT TANKS
End Job	10/18/2010 23:48							THANK YOU FOR CHOOSING HALLIBURTON, THOMAS PONDER AND CREW

# SAMSON

## SOUTHERN UTE 33-9-36 #4, 8 5/8" SURFACE



Local Event Log			
Maximum	SPPP	Maximum	SPPP
1 START JOB	23:12:12 -1,000	2 FILL LINES	23:12:34 29.47
4 PUMP H2O SPACER	23:19:12 236.4	5 PUMP CEMENT	23:27:22 284.0
7 DROP PLUG	23:37:15 28.41	8 PUMP H2O DISPLACEMENT	23:38:33 131.0
10 BUMP PLUG	23:45:47 1173	11 CHECK FLOATS	23:47:24 1087
		3 TEST LINES	23:15:01 3650
		6 SHUTDOWN	23:35:48 136.0
		9 SLOW RATE	23:41:55 153.0
		12 END JOB	23:48:54 1,000

Customer: SAMSON	Job Date: 18-Oct-2010	Sales Order #: 7712644
Well Description: SOUTHERN UTE 33-9-36 #4	Job Type: SURFACE	ADC Used: YES
Company Rep: FRANK SEIDEL	Cement Supervisor: THOMAS PONDER	Elite #/Operator: ELITE #8 / JESSE SLAUGHTER

OptiCem v6.4.9  
19-Oct-10 00:06