

HALLIBURTON

**XTO ENERGY INC
382 ROAD 3100
AZTEC, New Mexico**

FEDERAL
Federal 4S-95-01-31D

BRONCO/Bronco/27

Post Job Summary

Cement Intermediate Casing

Prepared for: Wanett McCauley
Date Prepared: 3/18/09
Version: 1

Service Supervisor: STILL, MICHEAL

Submitted by: Chris Cicirello
Technical Professional

HALLIBURTON

HALLIBURTON

Wellbore Geometry

Job Tubulars					MD		TVD		Excess	Shoe Joint Length
Type	Description	Size in	ID in	Wt lbm/ft	Top ft	Bottom ft	Top ft	Bottom ft	%	ft
Casing	10 3/4" Surface	10.75	10.050	40.50	0.00	3,403.00				40.00
Open Hole Section	9 7/8" Open Hole		9.875		3,403.00	10,891.00			40.00	40.00
Casing	7 5/8" Intermediate	7.63	6.875	29.70	0.00	10,891.00				40.00
Cement Stage Tool	Multiple Stage Cementer				7,500.00	7,500.00				

Pumping Schedule

Stage /Plug #	Fluid #	Fluid Type	Fluid Name	Surface Density lbm/gal	Avg Rate bbl/min	Surface Volume	Downhole Volume
1	1	Spacer	Water Ahead	8.33	5.00		.0
1	2	Spacer	SUPERFLUSH	9.20	5.00		.0
1	3	Spacer	Water Behind	8.33	5.00		.0
1	4	Cement Slurry	Halliburton Light	12.70	5.00		.0
1	5	Cement Slurry	First Stage Tail	13.50	5.00		.0
1	6	Mud	Mud displacement	9.40	5.00		.0
2	1	Spacer	Water Ahead	8.33	5.00		.0
2	2	Spacer	SUPERFLUSH	9.20	5.00		.0
2	3	Spacer	Water Behind	8.33	5.00		.0
2	4	Cement Slurry	Second Stage Lead	12.70	5.00		.0
2	5	Cement Slurry	Second Stage Tail	13.50	5.00		.0
2	6	Mud	Mud Displacement	9.50	5.00		.0

HALLIBURTON

Fluids Pumped

Stage/Plug # 1 Fluid 1: Water Ahead
DUMMY MUD / FLUSH / SPACER SBC MATERIAL

Fluid Density: 8.33 lbm/gal
Pump Rate: 5.00 bbl/min

Stage/Plug # 1 Fluid 2: SUPERFLUSH
DUMMY MUD / FLUSH / SPACER SBC MATERIAL

Fluid Density: 9.20 lbm/gal
Pump Rate: 5.00 bbl/min

Stage/Plug # 1 Fluid 3: Water Behind
DUMMY MUD / FLUSH / SPACER SBC MATERIAL

Fluid Density: 8.33 lbm/gal
Pump Rate: 5.00 bbl/min

Stage/Plug # 1 Fluid 4: Halliburton Light
ECONOCEM (TM) SYSTEM
2 % Bentonite
4 lbm Silicalite Compacted
0.1 % Halad(R)-344
0.6 % HR-601
0.125 lbm Poly-E-Flake

Fluid Weight: 12.70 lbm/gal
Slurry Yield: 1.93 ft³/sack
Total Mixing Fluid: 10.28 Gal
Calculated Fill: 2,891.00 ft
Calculated Top of Fluid: 7,500.00 ft
Estimated Top of Fluid:
Pump Rate: 5.00 bbl/min

Stage/Plug # 1 Fluid 5: First Stage Tail
POZ PREMIUM 50/50 - SBM (12302)
0.5 % Halad(R)-344
0.3 % Halad(R)-413
0.2 % CFR-3
0.125 lbm Poly-E-Flake
0.2 % HR-5
8 lbm Gilsonite
0.2 % Super CBL

Fluid Weight: 13.50 lbm/gal
Slurry Yield: 1.40 ft³/sack
Total Mixing Fluid: 5.79 Gal
Calculated Fill: 500.00 ft
Calculated Top of Fluid: 10,391.00 ft
Estimated Top of Fluid:
Pump Rate: 5.00 bbl/min

Stage/Plug # 1 Fluid 6: Mud displacement

Fluid Density: 9.40 lbm/gal
Pump Rate: 5.00 bbl/min
Fluid Gels:
Mud PV/YP:

Stage/Plug # 2 Fluid 1: Water Ahead
DUMMY MUD / FLUSH / SPACER SBC MATERIAL

Fluid Density: 8.33 lbm/gal
Pump Rate: 5.00 bbl/min

Stage/Plug # 2 Fluid 2: SUPERFLUSH
DUMMY MUD / FLUSH / SPACER SBC MATERIAL

Fluid Density: 9.20 lbm/gal
Pump Rate: 5.00 bbl/min

HALLIBURTON

Stage/Plug # 2 Fluid 3: Water Behind
DUMMY MUD / FLUSH / SPACER SBC MATERIAL

Fluid Density: 8.33 lbm/gal
Pump Rate: 5.00 bbl/min

Stage/Plug # 2 Fluid 4: Second Stage Lead
ECONOCEM (TM) SYSTEM

2 % Bentonite
4 lbm Silicalite Compacted
0.1 % Halad(R)-344
0.5 % HR-601
0.125 lbm Poly-E-Flake

Fluid Weight: 12.70 lbm/gal
Slurry Yield: 1.92 ft³/sack
Total Mixing Fluid: 10.26 Gal
Calculated Fill: 4,907.00 ft
Calculated Top of Fluid: 2,093.00 ft
Estimated Top of Fluid:
Pump Rate: 5.00 bbl/min

Stage/Plug # 2 Fluid 5: Second Stage Tail
POZ PREMIUM 50/50 - SBM (12302)

0.5 % Halad(R)-344
0.3 % Halad(R)-413
0.2 % CFR-3
0.125 lbm Poly-E-Flake
0.2 % HR-5
8 lbm Gilsonite
0.2 % Super CBL

Fluid Weight: 13.50 lbm/gal
Slurry Yield: 1.40 ft³/sack
Total Mixing Fluid: 5.79 Gal
Calculated Fill: 500.00 ft
Calculated Top of Fluid: 7,000.00 ft
Estimated Top of Fluid:
Pump Rate: 5.00 bbl/min

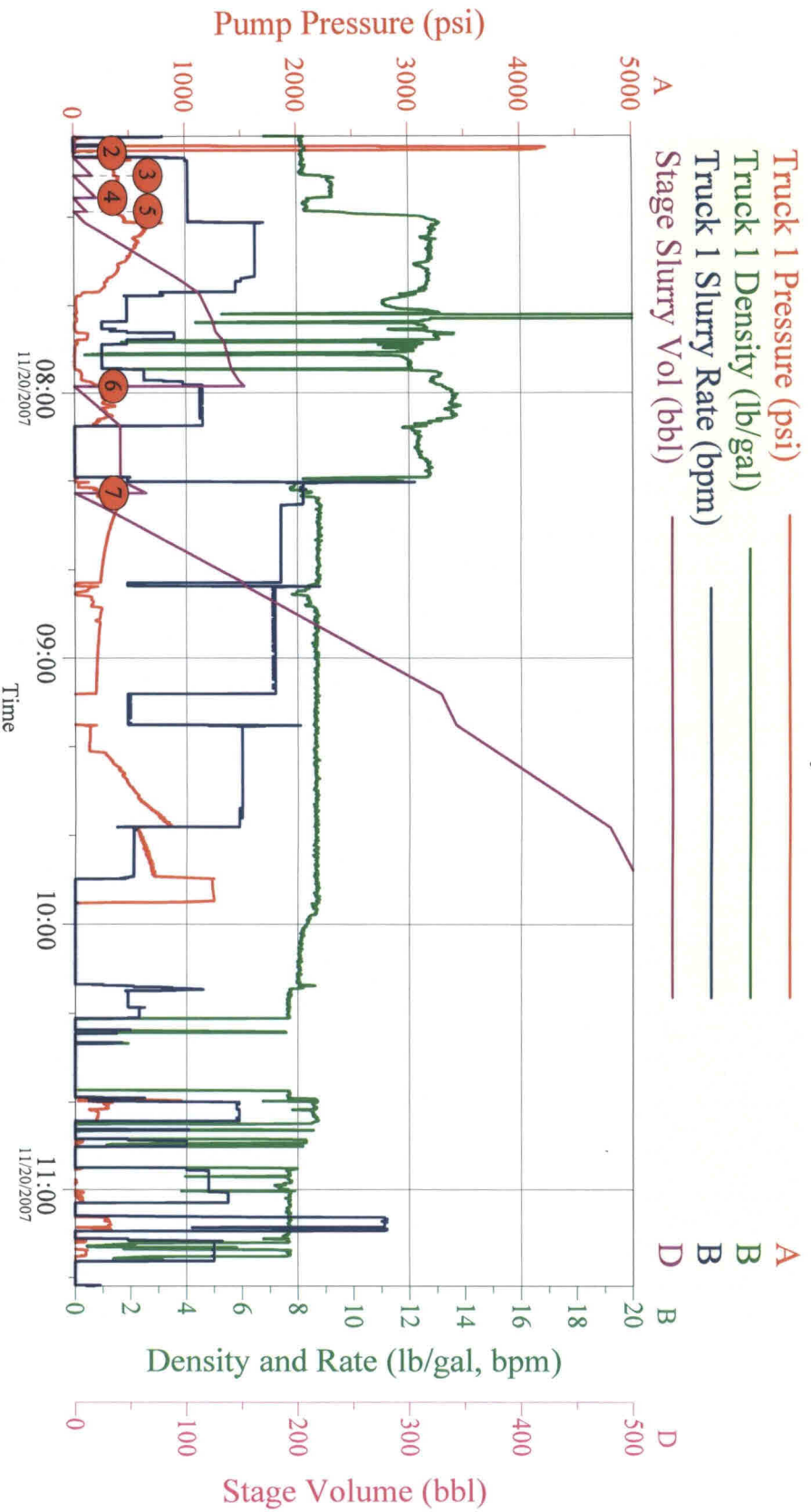
Stage/Plug # 2 Fluid 6: Mud Displacement

Fluid Density: 9.50 lbm/gal
Pump Rate: 5.00 bbl/min
Fluid Gels:
Mud PV/YP:

HALLIBURTON

Data Acquisition

XTO 4S-95-01-31D Bronco 27 2-Stage Intermediate (Stage 1) Job Summary

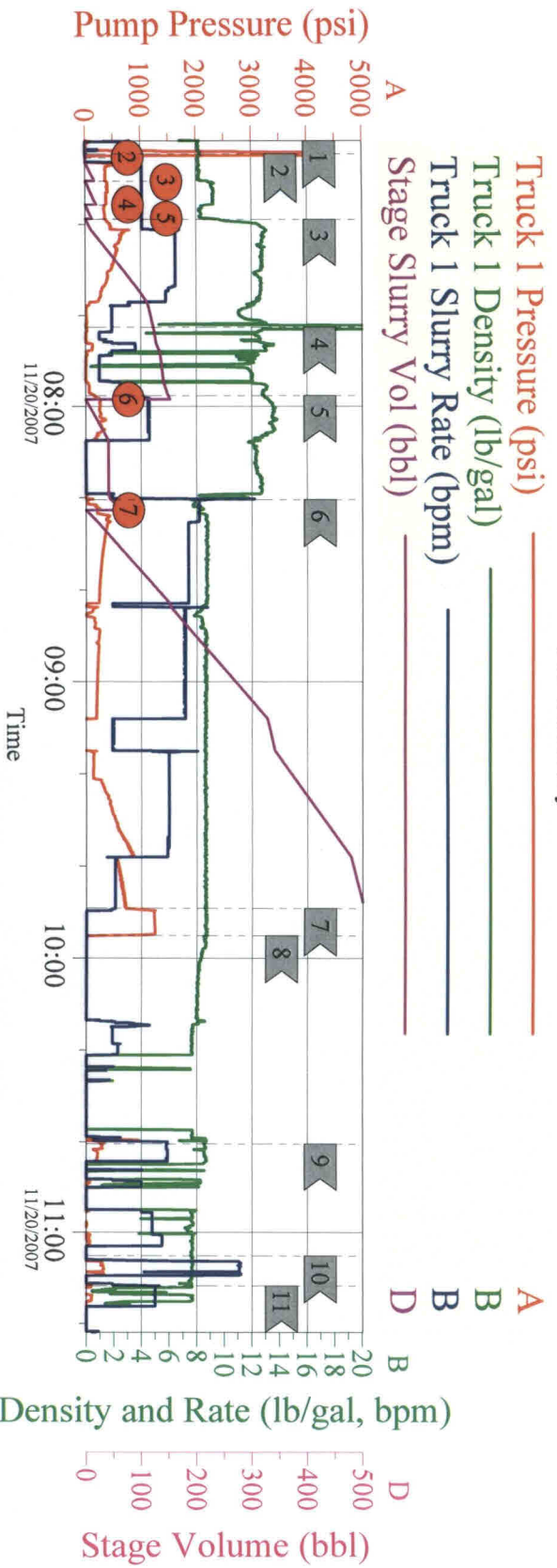


Customer:	XTO Energy Inc	Job Date:	20-Nov-2007	Sales Order #:	5503720
Well Description:	Bronco 27 4S-95-01-31D	UWI:	051031106900		

XTO 4S-95-01-31D

Bronco 27 2-Stage Intermediate (Stage 1)

Job Summary



Local Event Log

1	Fill Lines	07:02:05	2	Pressure Test	07:04:55
3	Start Lead Cement	07:18:50	4	Bulk Delivery Issues	07:42:35
5	Start Tail Cement	07:57:37	6	Drop Plug, Start Displacement	08:20:19
7	Bump Plug	09:49:07	8	Check Floats, Held 1.8 bbl back	09:55:04
9	Wash Lines	10:40:23	10	Open Tool	11:05:06
11	Rig Circulate	11:11:39			

Customer: XTO Energy Inc
Well Description: Bronco 27 4S-95-01-31D

Job Date: 20-Nov-2007
UWI: 051031106900

Sales Order #: 5503720

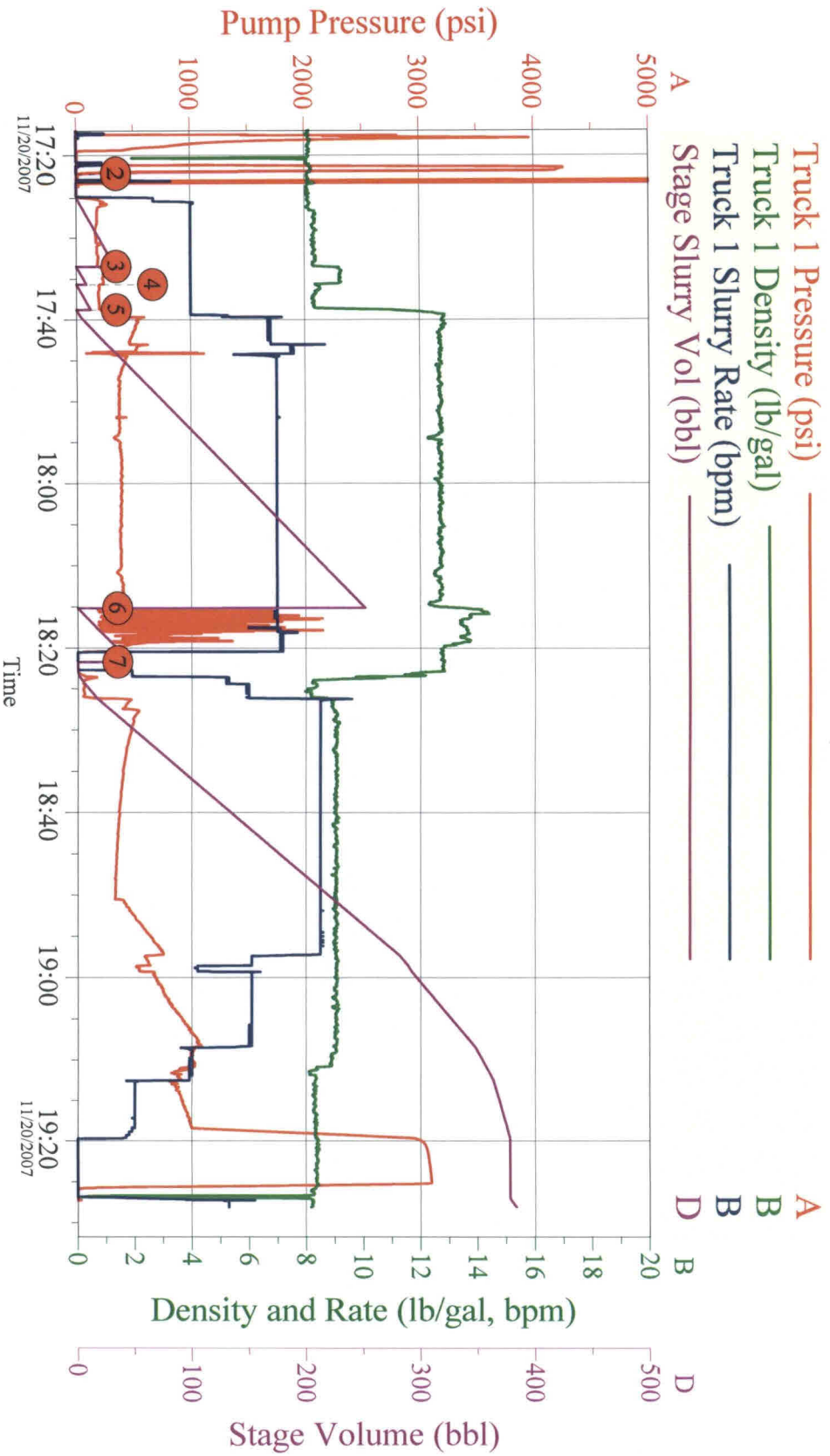
HALLIBURTON
OptiCem v6.2.3
20-Nov-07 12:22

HALLIBURTON

XTO 4S-95-01-31D

Bronco 27 2-stage intermediate (stage 2)

Job Summary



Customer:	XTO Energy Inc	Job Date:	20-Nov-2007	Sales Order #:	5503720
Well Description:	Bronco 27 4S-95-01-31D	UWI:	0510311106900		

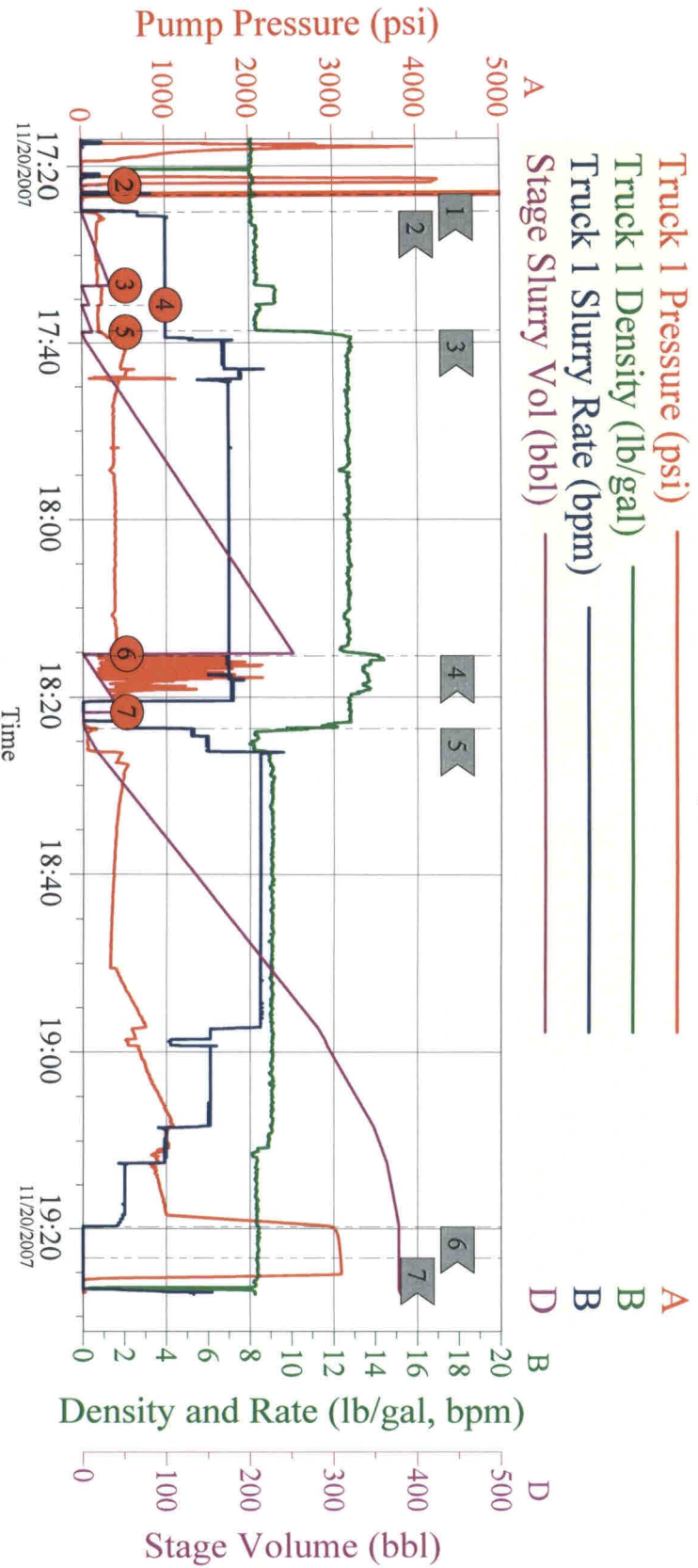
HALLIBURTON
OptiCem v6.2.3
20-Nov-07 19:28

HALLIBURTON

XTO 4S-95-01-31D

Bronco 27 2-stage intermediate (stage 2)

Job Summary



Customer: XTO Energy Inc
Well Description: Bronco 27 4S-95-01-31D

Job Date: 20-Nov-2007
UWI: 0510311106900

Sales Order #: 55037720

HALLIBURTON
OptiCem v6.2.3
20-Nov-07 19:27

HALLIBURTON

Service Supervisor Reports

Job Log

Date/Time	Chart #	Activity Code	Pump Rate	Cum Vol	Pump	Pressure (psig)	Comments
11/19/2007 02:00		Call Out					
11/20/2007 03:00		Arrive at Location from Service Center					
11/20/2007 03:30		Safety Meeting					
11/20/2007 03:45		Rig-Up Equipment					
11/20/2007 06:30		Safety Meeting					
11/20/2007 07:04		Test Lines				4180.0	
11/20/2007 07:06		Pump Water	4	10		475.0	
11/20/2007 07:11		Pump Spacer	4	20		360.0	
11/20/2007 07:16		Pump Water	4.1	10		380.0	
11/20/2007 07:19		Pump 1st Stage Lead Slurry	4.1	158.1		350.0	460 sacks 1.93 y 10.20 gal/sk.
11/20/2007 07:58		Pump 1st Stage Tail Slurry	4.5	29.6		240.0	120 sacks 1.4 y 5.79 gal/sk.
11/20/2007 08:15		Drop Plug					
11/20/2007 08:20		Pump Well Fluid	8.2	160		37.0	9.0# Mud
11/20/2007 08:44		Pump Water	7.2	15		77.0	Pump Water Across Tool
11/20/2007 08:47		Pump Well Fluid	7.2	160		165.0	
11/20/2007 09:08		Slow Rate	2	335		79.0	Clear Tool
11/20/2007 09:15		Resume	6			212.0	
11/20/2007 09:39		Slow Rate	2	480		600.0	
11/20/2007 09:51		Bump Plug	2	499		800.0	500 PSI over
11/20/2007 09:56		Check Floats					Float Held
11/20/2007 10:00		Drop Plug					Drop Opening Tool
11/20/2007 10:12		Open Multiple Stage Cementer					Open Tool (850 opening psi)
11/20/2007 10:12		Circulate Well					Turn Well Over To Rig
11/20/2007 10:12		Wait on Orders - Start Time					Wait 6 Hours.
11/20/2007 17:00		Safety Meeting					
11/20/2007 17:22		Test Lines				4250.0	
11/20/2007 17:26		Pump Water	4	10		180.0	
11/20/2007 17:29		Pump Spacer	4	20		185.0	Super Flush
11/20/2007 17:36		Pump Water	4	10		220.0	
11/20/2007 17:39		Pump 2nd Stage Lead Slurry	4	249.6		200.0	730 sacks, 1.92 y 10.26 gal/sk.
11/20/2007 18:17		Pump 2nd Stage Tail Slurry	7			450.0	110 sacks, 1.4 y 5.79 gal/sk.
11/20/2007 18:22		Drop Plug					
11/20/2007 18:23		Pump Displacement	6	346.3		50.0	
11/20/2007 18:51		Pressure Up	8.5	200		400.0	Catch Pressure
11/20/2007 18:58		Slow Rate	6	250		600.0	
11/20/2007 19:08		Rig-Down Equipment					
11/20/2007 19:09		Slow Rate	4	310		980.0	
11/20/2007 19:13		Slow Rate	2	325		825.0	
11/20/2007 19:19		Bump Plug	2	346.3		1000.0	
11/20/2007 19:20		Close Multiple Stage Cementer				2950.0	Close Tool (1200 closing psi)
11/20/2007 19:20		Shutdown					
11/20/2007 19:25		Check Floats					Float Held
11/20/2007 19:30		Safety Meeting					
11/20/2007 22:00		Safety Meeting					
11/20/2007 22:30		Depart Location for Service Center or Other Site					

The Road to Excellence Starts with Safety

Sold To #: 301599		Ship To #: 2606711		Quote #:		Sales Order #: 5503720	
Customer: XTO ENERGY INC				Customer Rep: Martin, Brent			
Well Name: Federal		Well #: 4S-95-01-31D		API/UWI #: 051031106900			
Field: PICEANCE CREEK		City (SAP): UNKNOWN		County/Parish: Rio Blanco		State: Colorado	
Legal Description: Section 1 Township 4S Range 95W							
Contractor: BRONCO		Rig/Platform Name/Num: Bronco 27					
Job Purpose: Cement Intermediate Casing							
Well Type: Development Well		Job Type: Cement Intermediate Casing					
Sales Person: KRUGER, ROBERT		Srvc Supervisor: STILL, MICHEAL			MBU ID Emp #: 258213		

Job Personnel

HES Emp Name	Exp Hrs	Emp #	HES Emp Name	Exp Hrs	Emp #	HES Emp Name	Exp Hrs	Emp #
STILL, MICHEAL		258213						
Wayne								

Equipment

HES Unit #	Distance-1 way	HES Unit #	Distance-1 way	HES Unit #	Distance-1 way	HES Unit #	Distance-1 way

Job Hours

Date	On Location Hours	Operating Hours	Date	On Location Hours	Operating Hours	Date	On Location Hours	Operating Hours

TOTAL Total is the sum of each column separately

Job						Job Times			
Formation Name						Date	Time	Time Zone	
Formation Depth (MD)	Top		Bottom			Called Out			
Form Type		BHST		190 degF		On Location			
Job depth MD	10891. ft	Job Depth TVD	10800. ft			Job Started			
Water Depth		Wk Ht Above Floor	6. ft			Job Completed			
Perforation Depth (MD)	From		To			Departed Loc			

Well Data

Description	New / Used	Max pressure psig	Size in	ID in	Weight lbm/ft	Thread	Grade	Top MD ft	Bottom MD ft	Top TVD ft	Bottom TVD ft
9 7/8" Open Hole				9.875				3403.	10891.		
Multiple Stage Cementer								7500.	7500.		
10 3/4" Surface			10.75	10.05	40.5		J-55	.	3403.		
7 5/8" Intermediate			7.625	6.875	29.7		P-110	.	10891.		

Tools and Accessories

Type	Size	Qty	Make	Depth	Type	Size	Qty	Make	Depth	Type	Size	Qty	Make
Guide Shoe					Packer					Top Plug			
Float Shoe					Bridge Plug					Bottom Plug			
Float Collar					Retainer					SSR plug set			
Insert Float										Plug Container			
Stage Tool										Centralizers			

Miscellaneous Materials

Gelling Agt		Conc		Surfactant		Conc		Acid Type		Qty		Conc	%
Treatment Fld		Conc		Inhibitor		Conc		Sand Type		Size		Qty	

Summit

Wednesday, March 18, 2009 17:06:00

Version:

Fluid Data									
Stage/Plug #: 1									
Fluid #	Stage Type	Fluid Name	Qty	Qty uom	Mixing Density lbm/gal	Yield ft3/sk	Mix Fluid Gal/sk	Rate bbl/min	Total Mix Fluid Gal/sk
1	Water Ahead			bbl	8.33	.0	.0	5.0	
2	SUPERFLUSH			bbl	9.2	.0	.0	5.0	
3	Water Behind			bbl	8.33	.0	.0	5.0	
4	Halliburton Light	ECONOCEM (TM) SYSTEM (452992)		sacks	12.7	1.93	10.28	5.0	10.28
	2 %	BENTONITE, BULK (100003682)							
	4 lbm	SILICALITE - COMPACTED, BULK (100012221)							
	0.1 %	HALAD(R)-344, 50 LB (100003670)							
	0.6 %	HR-601, 50 LB BAG (101328348)							
	0.125 lbm	POLY-E-FLAKE (101216940)							
	10.275 Gal	FRESH WATER							
5	First Stage Tail	POZ PREMIUM 50/50 - SBM (12302)		sacks	13.5	1.4	5.79	5.0	5.79
	0.5 %	HALAD(R)-344, 50 LB (100003670)							
	0.3 %	HALAD(R)-413, 50 LB (100003738)							
	0.2 %	CFR-3, W/O DEFOAMER, 50 LB SK (100003653)							
	0.125 lbm	POLY-E-FLAKE (101216940)							
	0.2 %	HR-5, 50 LB SK (100005050)							
	8 lbm	GILSONITE, BULK (100003700)							
	0.2 %	SUPER CBL, 50 LB PAIL (100003668)							
	5.792 Gal	FRESH WATER							
6	Mud displacement			bbl	9.4			5.0	
Stage/Plug #: 2									
Fluid #	Stage Type	Fluid Name	Qty	Qty uom	Mixing Density uom	Yield uom	Mix Fluid uom	Rate uom	Total Mix Fluid uom
1	Water Ahead			bbl	8.33	.0	.0	5.0	
2	SUPERFLUSH			bbl	9.2	.0	.0	5.0	
3	Water Behind			bbl	8.33	.0	.0	5.0	
4	Second Stage Lead	ECONOCEM (TM) SYSTEM (452992)		sacks	12.7	1.92	10.26	5.0	10.26
	2 %	BENTONITE, BULK (100003682)							
	4 lbm	SILICALITE - COMPACTED, BULK (100012221)							
	0.1 %	HALAD(R)-344, 50 LB (100003670)							
	0.5 %	HR-601, 50 LB BAG (101328348)							
	0.125 lbm	POLY-E-FLAKE (101216940)							
	10.259 Gal	FRESH WATER							

Stage/Plug #: 2									
Fluid #	Stage Type	Fluid Name	Qty	Qty uom	Mixing Density lbm/gal	Yield ft ³ /sk	Mix Fluid Gal/sk	Rate bbl/min	Total Mix Fluid Gal/sk
5	Second Stage Tail	POZ PREMIUM 50/50 - SBM (12302)		sacks	13.5	1.4	5.79	5.0	5.79
	0.5 %	HALAD(R)-344, 50 LB (100003670)							
	0.3 %	HALAD(R)-413, 50 LB (100003738)							
	0.2 %	CFR-3, W/O DEFOAMER, 50 LB SK (100003653)							
	0.125 lbm	POLY-E-FLAKE (101216940)							
	0.2 %	HR-5, 50 LB SK (100005050)							
	8 lbm	GILSONITE, BULK (100003700)							
	0.2 %	SUPER CBL, 50 LB PAIL (100003668)							
	5.792 Gal	FRESH WATER							
6	Mud Displacement			bbl	9.5			5.0	
Calculated Values		Pressures		Volumes					
Displacement		Shut In: Instant		Lost Returns		Cement Slurry		Pad	
Top Of Cement		5 Min		Cement Returns		Actual Displacement		Treatment	
Frac Gradient		15 Min		Spacers		Load and Breakdown		Total Job	
Rates									
Circulating		Mixing		Displacement		Avg. Job			
Cement Left In Pipe	Amount	40 ft	Reason	Shoe Joint					
Frac Ring # 1 @	ID		Frac ring # 2 @	ID		Frac Ring # 3 @	ID	Frac Ring # 4 @	ID
The Information Stated Herein Is Correct				Customer Representative Signature					

HALLIBURTON