

December 18, 2010



Carlos A. Luján, Ph.D.
Colorado Oil and Gas Conservation Commission
1120 Lincoln Street, Suite 801
Denver, CO 80203
carlos.lujan@state.co.us
720.272.2306

**RE: Proposed Water Quality Monitoring Points
Condition of Approval for Pit Closures on Encana's E34, H04, H34, and M34**

COGCC tracking/remediation numbers addressed in this letter.

Well Pad (Pit Location)	Form 27 Document Tracking #	Remediation Project #
E34	32522041	5355
H04	2522039	5353
H34	2522025	5352
M34	2521864	5347

Dr. Luján:

This letter was prepared to present sampling locations added to Encana's existing water quality monitoring program for the North Parachute Mountain. These locations were selected to monitor all potentially affected streams, springs, and seeps in the area around the E34, H04, H34, and M34 well pads as agreed to by Encana in support of pit closure activities on these well pads.

These sampling locations are currently proposed and may be revised in the Spring of 2011 during the initial sampling event for these locations. Due to typical snowpack at this elevation, the locations identified in this letter will be sampled semiannually (Spring and Fall) for the attached analytical suite. Laboratory results will be kept on file at Encana's Parachute Field Office, and will be provided to the COGCC upon request, or upon discovery of water quality issues during semiannual sampling events.

If you have any questions about this project, or the information presented here, please don't hesitate to contact me at christopher.hines@encana.com or 970.261.1127.

Regards,

Christopher C. Hines
Natural Resources Specialist
Contract Environmental Field Coordinator

Attachments:

- Table of Proposed Water Quality Monitoring Locations
- Topographic Map of Proposed Water Quality Monitoring Locations
- Water Quality Analytical Suite

Encana Oil & Gas (USA) Inc.
2717 County Road 215, Suite 100
Parachute, Colorado
United States 81635
t 970.285.2600
f 970.285.2705
www.encana.com

December 18, 2010



Sample ID	Sample Type	Location Description / Notes
ENPR4SP	Spring	Known spring location in unnamed intermittent tributary to West Fork Parachute Creek southwest of project locations.
ENPR22ST	Stream	Sampling point on West Fork Parachute Creek downstream from unnamed intermittent tributaries southeast and southwest of the project locations.
ENPR1WW	Water Well	Water well in the valley bottom of the Dry Fork of Stewart Gulch, north of the project locations.
ENPR23ST	Stream	Sampling point along the Dry Fork of Stewart Gulch, north of the project locations. As this stream is known to be intermittent, this location may not be viable in the Fall.
ENPR29SP	Spring	Spring along the East Fork of Stewart Gulch, north of the project locations.
East Stewart Spring	Spring	Spring along the East Fork of Stewart Gulch, north of the project locations. This sampling location was inherited from ConocoPhillips, and may undergo a name change as it is incorporated into Encana's monitoring program.
ENPR24ST	Stream	Sampling point along the East Fork of Stewart Gulch, north of the project locations.
ENPR30SP	Spring	Spring location along an unnamed intermittent tributary to Davis Gulch, east of the project locations.
ENPR25ST	Stream	Sampling point along Davis Gulch, east of the project locations.

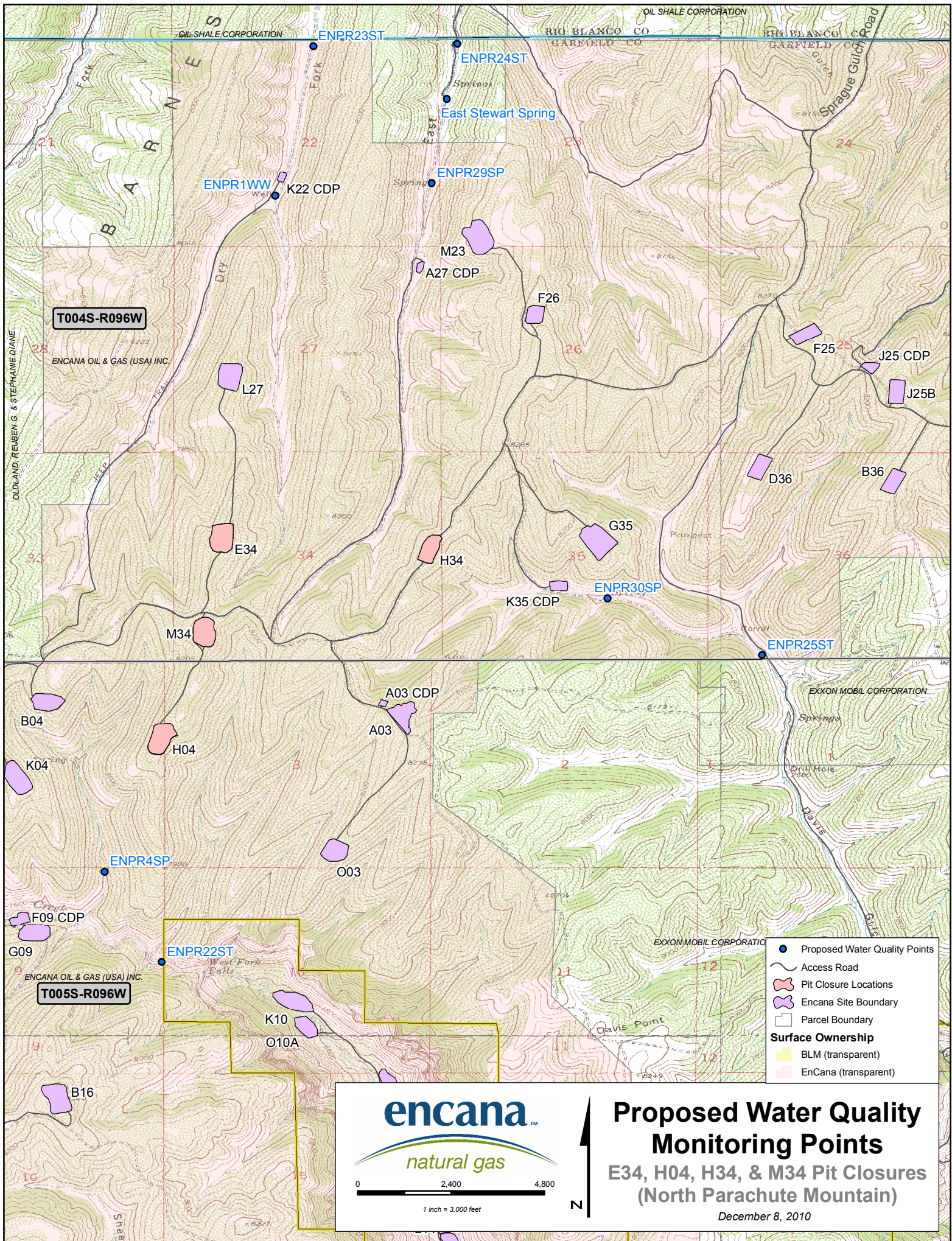
Encana Oil & Gas (USA) Inc.

2717 County Road 215, Suite 100
Parachute, Colorado
United States 81635

t 970.285.2600

f 970.285.2705

www.encana.com



Laboratory Analysis	Method
---------------------	--------

Methane	RSK-175
---------	----------------

Sulfide	
---------	--

MTBE	(Methyl-tert-butyl ether)	8260B
------	---------------------------	--------------

BTEX -	<i>Benzene</i>	8260B
--------	----------------	--------------

	<i>Toluene</i>	8260B
--	----------------	--------------

	<i>ethylbenzene</i>	8260B
--	---------------------	--------------

	<i>xylenes</i>	8260B
--	----------------	--------------

Ammonia-N	
-----------	--

Anions -	<i>Bromide</i>
----------	----------------

	<i>Chloride</i>
--	-----------------

	<i>Fluoride</i>
--	-----------------

	<i>Nitrate</i>
--	----------------

	<i>Nitrite</i>
--	----------------

	<i>Sulfate</i>
--	----------------

pH	
----	--

Conductivity	
--------------	--

TDS	(Total Dissolved Solids)
-----	--------------------------

Total Alkalinity	
------------------	--

	<i>Bicarbonate</i>
--	--------------------

	<i>Carbonate</i>
--	------------------

Dissolved Metals -	<i>Arsenic</i>
--------------------	----------------

	<i>Barium</i>
--	---------------

	<i>Cadmimum</i>
--	-----------------

	<i>Chromium</i>
--	-----------------

	<i>Copper</i>
--	---------------

	<i>Lead</i>
--	-------------

	<i>Silver</i>
--	---------------

	<i>Calcium</i>
--	----------------

	<i>Iron</i>
--	-------------

	<i>Potassium</i>
--	------------------

	<i>Magnesium</i>
--	------------------

	<i>Manganese</i>
--	------------------

	<i>Sodium</i>
--	---------------

	<i>Selenium</i>
--	-----------------