

# CHEVRON USA, INC.

## CONSTRUCTION LAYOUT FOR

MC HAGOOD B2  
SECTION 22, T2N, R103W, 6th P.M.  
814' FNL 2229' FWL

**FIGURE #1**

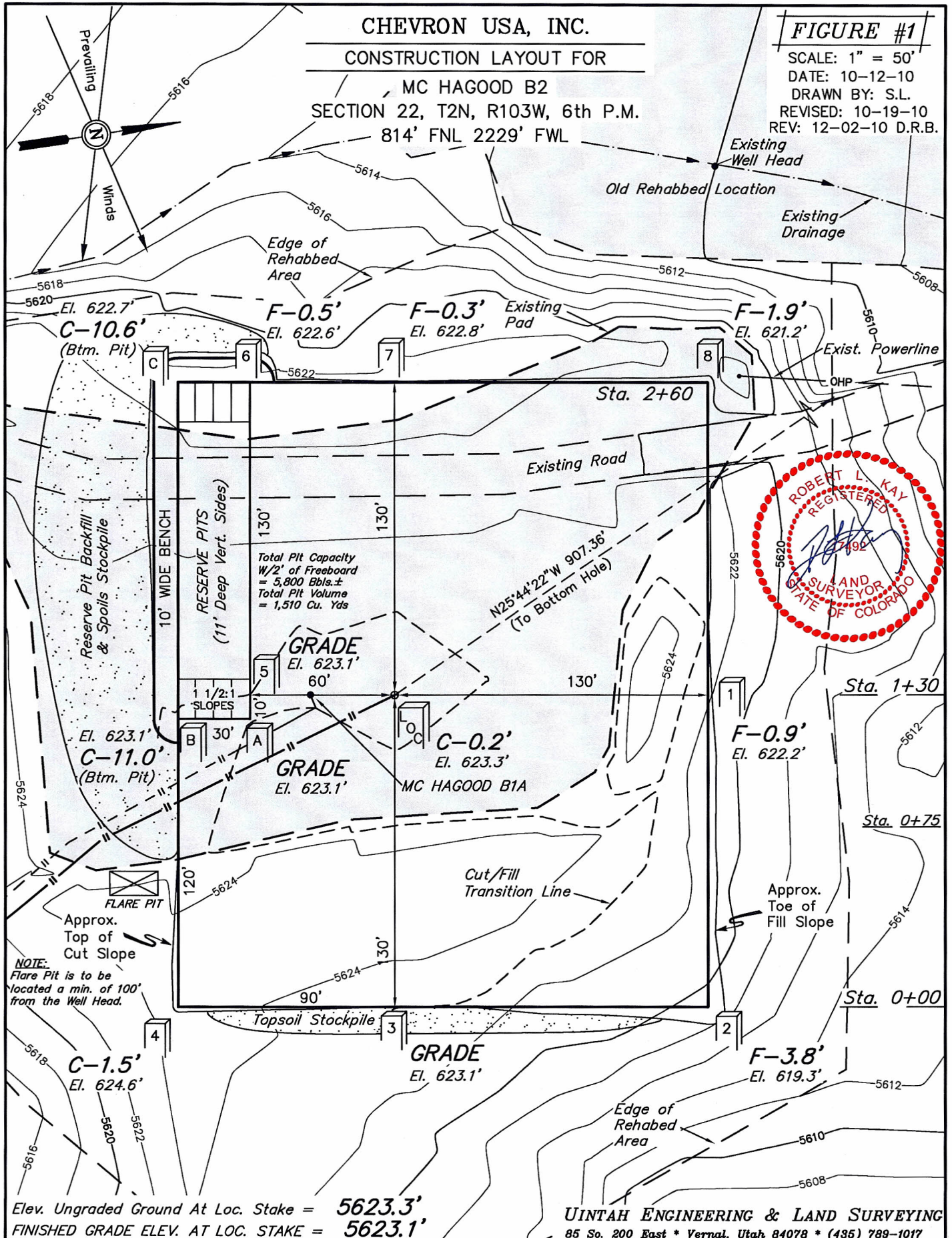
SCALE: 1" = 50'

DATE: 10-12-10

DRAWN BY: S.L.

REVISED: 10-19-10

REV: 12-02-10 D.R.B.



Elev. Ungraded Ground At Loc. Stake = 5623.3'  
FINISHED GRADE ELEV. AT LOC. STAKE = 5623.1'

UINTAH ENGINEERING & LAND SURVEYING  
85 So. 200 East \* Vernal, Utah 84078 \* (435) 789-1017

# CHEVRON USA, INC.

## CONSTRUCTION LAYOUT CROSS SECTIONS FOR

MC HAGOOD B2

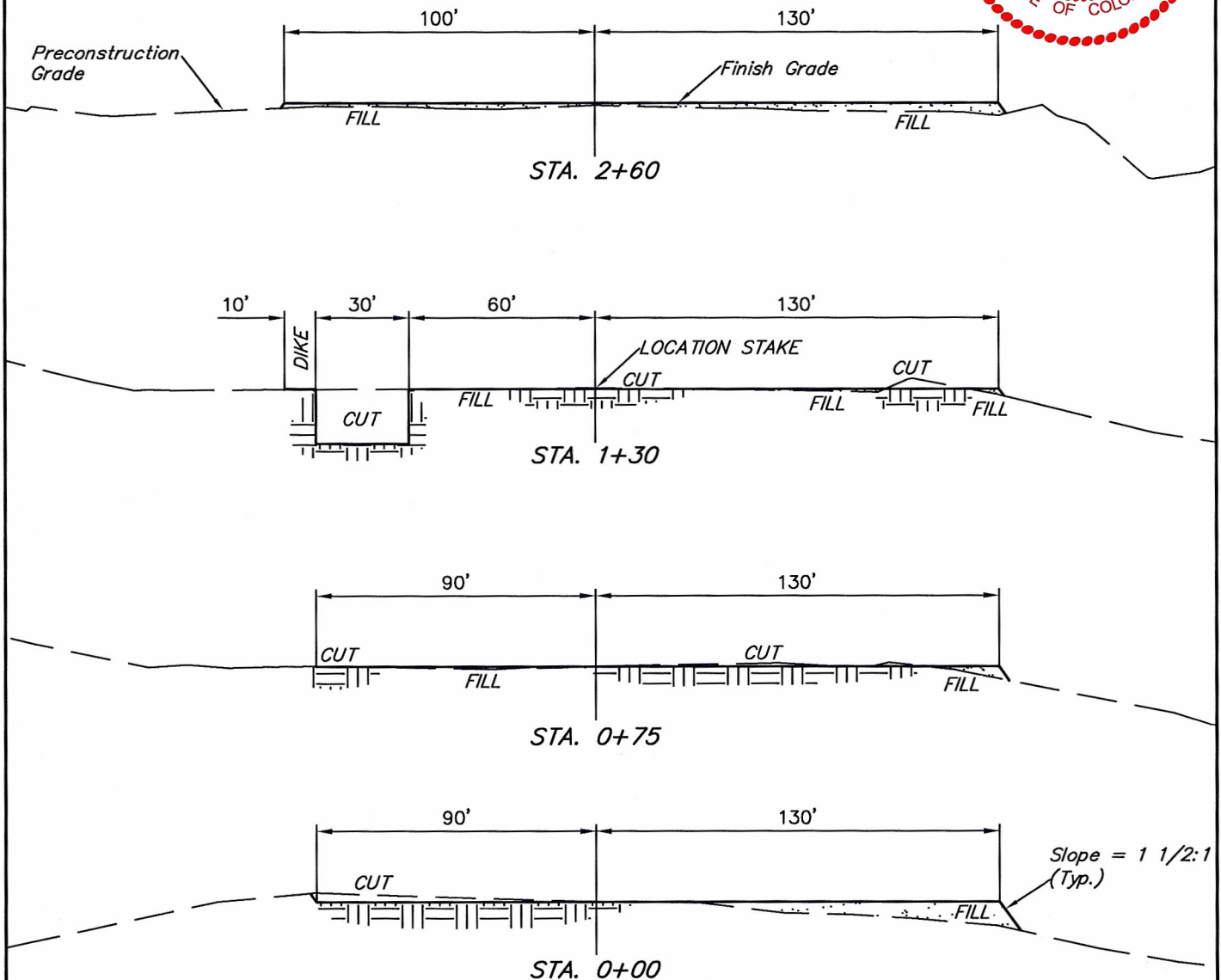
SECTION 22, T2N, R103W, 6th P.M.

814' FNL 2229' FWL

FIGURE #2



1" = 20'  
X-Section Scale  
1" = 50'  
DATE: 10-12-10  
DRAWN BY: S.L.  
REVISED: 10-19-10 S.L.  
REVISED: 12-02-10 D.R.B.



### NOTE:

Topsoil should not be Stripped Below Finished Grade on Substructure Area.

### APPROXIMATE ACREAGES

WELL SITE DISTURBANCE = ± 2.247 ACRES

PIPELINE DISTURBANCE = ± 1.096 ACRES

TOTAL = ± 3.343 ACRES

### \* NOTE:

FILL QUANTITY INCLUDES 5% FOR COMPACTION

### APPROXIMATE YARDAGES

(6") Topsoil Stripping = 480 Cu. Yds.  
(New Construction Only)  
Remaining Location = 2,210 Cu. Yds.  
TOTAL CUT = 2,690 CU.YDS.  
FILL = 1,590 CU.YDS.

EXCESS MATERIAL = 1,100 Cu. Yds.  
Topsoil & Pit Backfill = 1,240 Cu. Yds.  
(1/2 Pit Vol.)  
DECIFIT UNBALANCE = <140> Cu. Yds.  
(After Interim Rehabilitation)

UINTAH ENGINEERING & LAND SURVEYING

85 So. 200 East \* Vernal, Utah 84078 \* (435) 789-1017