

UELS Alum. Cap,  
Set Stone, Pile  
of Stones  
Lat: 40.135894°  
Long: 108.951894°

**T2N, R103W, 6th P.M.**

**CHEVRON U.S.A., INC.**

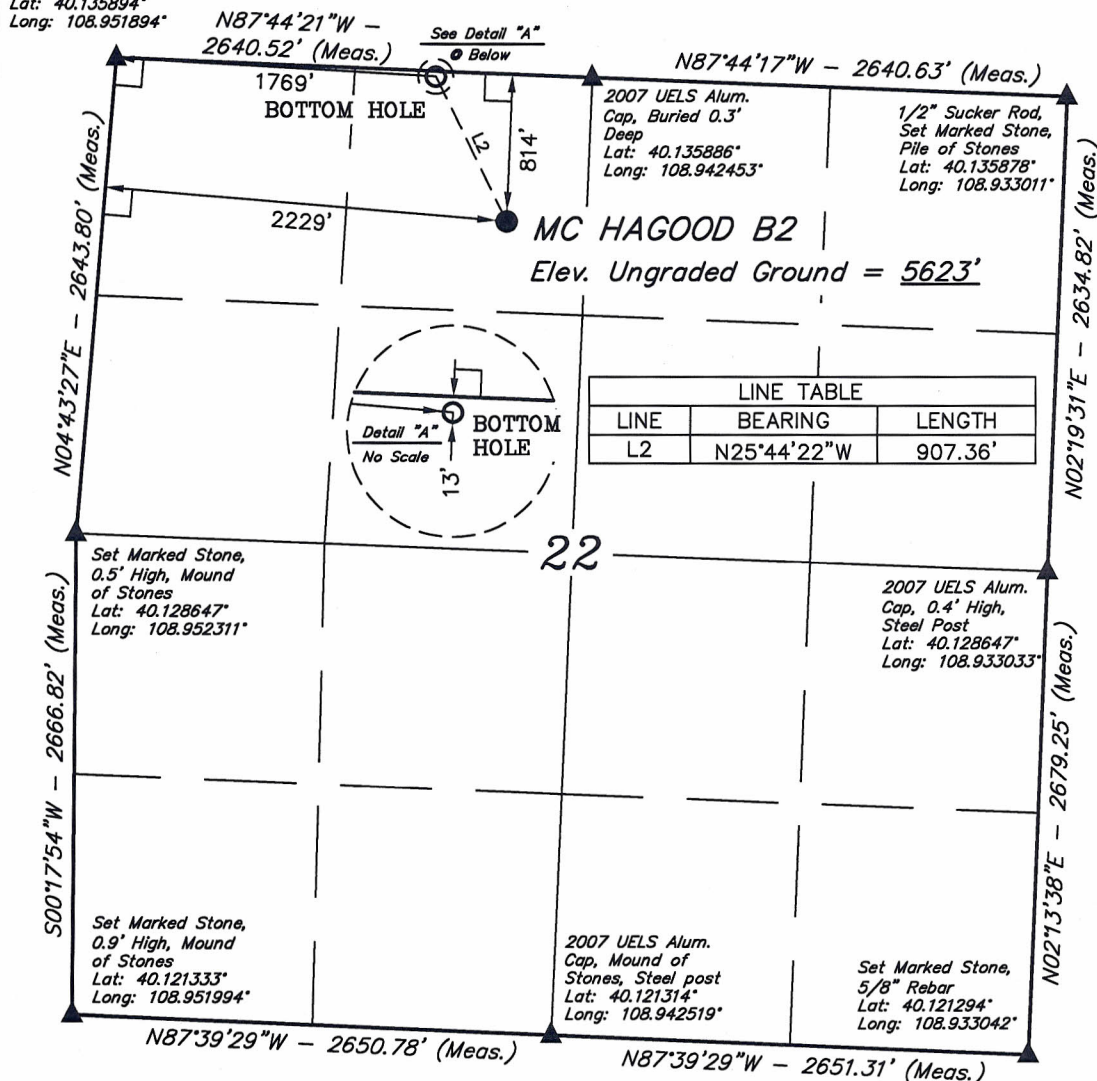
Well location, MC HAGOOD B2, located as shown  
in the NE 1/4 NW 1/4 of Section 22, T2N,  
R103W, 6th P.M., Rio Blanco County, Colorado.

### BASIS OF ELEVATION

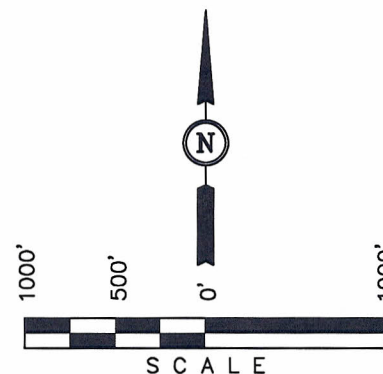
GOLF TRIANGULATION STATION LOCATED IN THE SE 1/4 OF  
SECTION 30, T2N, R102W, 6th P.M. TAKEN FROM THE BANTY  
POINT, QUADRANGLE, COLORADO, RIO BLANCO COUNTY, 7.5  
MINUTE QUAD (TOPOGRAPHIC MAP) PUBLISHED BY THE UNITED  
STATES DEPARTMENT OF THE INTERIOR, GEOLOGICAL SURVEY.  
SAID ELEVATION IS MARKED AS BEING 5311 FEET.

### BASIS OF BEARINGS

BASIS OF BEARINGS IS A G.P.S. OBSERVATION.



LINE TABLE		
LINE	BEARING	LENGTH
L2	N25°44'22"W	907.36'



### CERTIFICATE

THIS IS TO CERTIFY THAT THE ABOVE PLAT WAS PREPARED FROM  
FIELD NOTES OF ACTUAL SURVEYS MADE BY ME OR UNDER MY  
SUPERVISION AND THAT THE SAME ARE TRUE AND CORRECT TO THE  
BEST OF MY KNOWLEDGE AND BELIEF.

REGISTERED LAND SURVEYOR  
REGISTRATION NO. 17492  
STATE OF COLORADO

REVISED: 12-02-10 D.R.B.

REVISED: 10-19-10 S.L.

**UINTAH ENGINEERING & LAND SURVEYING**  
**85 SOUTH 200 EAST - VERNAL, UTAH 84078**  
**(435) 789-1017**

NOTE:  
SEE ADDENDUM TO LEGAL PLAT FOR  
EXISTING IMPROVEMENTS WITHIN 400'  
OF THE PROPOSED WELL DISTURBANCE.

### LEGEND:

- └─ = 90° SYMBOL
- = PROPOSED WELL HEAD.
- ▲ = SECTION CORNERS LOCATED.

PDOP = 1.9

NAD 83 (TARGET BOTTOM HOLE)	NAD 83 (SURFACE LOCATION)
LATITUDE = 40°08'09.07" (40.135853)	LATITUDE = 40°08'01.15" (40.133653)
LONGITUDE = 108°56'44.03" (108.945564)	LONGITUDE = 108°56'38.56" (108.944044)
NAD 27 (TARGET BOTTOM HOLE)	NAD 27 (SURFACE LOCATION)
LATITUDE = 40°08'09.18" (40.135883)	LATITUDE = 40°08'01.26" (40.133683)
LONGITUDE = 108°56'41.63" (108.944897)	LONGITUDE = 108°56'36.16" (108.943378)

SCALE 1" = 1000'	DATE SURVEYED: 10-11-10	DATE DRAWN: 10-12-10
PARTY J.F. C.P. S.L.	REFERENCES G.L.O. PLAT	
WEATHER WARM	FILE CHEVRON U.S.A., INC.	



# CHEVRON USA, INC.

## ADDENDUM TO LEGAL PLAT FOR

MC HAGOOD B2

SECTION 22, T2N, R103W, 6th P.M.

814' FNL 2229' FWL

SCALE: 1" = 200'

DATE: 10-12-10

DRAWN BY: S.L.

REVISED: 10-19-10 S.L.

REVISED: 12-02-10 D.R.B.

