
OXY GRAND JUNCTION EBUSINESS

**CC 697-16-01
GRAND VALLEY
Garfield County , Colorado**

Cement Surface Casing

11-Jun-2010

Job Site Documents

The Road to Excellence Starts with Safety

Sold To #: 344034	Ship To #: 2788741	Quote #:	Sales Order #: 7425271
Customer: OXY GRAND JUNCTION EBUSINESS	Customer Rep: BENAVIDES, SIMON		
Well Name: CC	Well #: 697-16-01	API/UWI #: 05-045-17696	
Field: GRAND VALLEY	City (SAP): PARACHUTE	County/Parish: Garfield	State: Colorado
Lat: N 39.531 deg. OR N 39 deg. 31 min. 50.102 secs.	Long: W 108.233 deg. OR W -109 deg. 46 min. 0.462 secs.		
Contractor: OXY	Rig/Platform Name/Num: H&P 330		
Job Purpose: Cement Surface Casing			
Well Type: Development Well	Job Type: Cement Surface Casing		
Sales Person: DUNNING, DUSTIN	Srvc Supervisor: STILLSON, ERIC	MBU ID Emp #: 393789	

Job Personnel

HES Emp Name	Exp Hrs	Emp #	HES Emp Name	Exp Hrs	Emp #	HES Emp Name	Exp Hrs	Emp #
ANDERSON, ADAM S	12	456683	BROWN, TRAVIS A	12	396848	BRUN, JUSTIN M	12	459269
CUNNINGHAM, TANNER Wade	12	445660	STILLSON, ERIC W	12	393789	YOUNG, JEREMY R	12	418013

Equipment

HES Unit #	Distance-1 way	HES Unit #	Distance-1 way	HES Unit #	Distance-1 way	HES Unit #	Distance-1 way
10000394	120 mile	10533645	120 mile	10616651C	120 mile	10722398	120 mile
10856450	120 mile	10856464	120 mile	10867425	120 mile	10897891	120 mile
10951246	120 mile	10995025	120 mile	11139328	120 mile	11139330	120 mile

Job Hours

Date	On Location Hours	Operating Hours	Date	On Location Hours	Operating Hours	Date	On Location Hours	Operating Hours
06-10-10	6	3	06-11-10	6	2			

TOTAL Total is the sum of each column separately

Job

Formation Name	Top	Bottom	Called Out	Date	Time	Time Zone
Formation Depth (MD)			On Location	10 - Jun - 2010	11:30	MST
Form Type		BHST	Job Started	10 - Jun - 2010	16:00	MST
Job depth MD	2913. ft	Job Depth TVD	Job Completed	10 - Jun - 2010	20:58	MST
Water Depth		Wk Ht Above Floor	Departed Loc	11 - Jun - 2010	04:20	MST
Perforation Depth (MD)	From	To		11 - Jun - 2010	06:00	MST

Well Data

Description	New / Used	Max pressure psig	Size in	ID in	Weight lbm/ft	Thread	Grade	Top MD ft	Bottom MD ft	Top TVD ft	Bottom TVD ft
OPEN HOLE SECTION				14.75					2951.		
SURFACE CASING	Unknown		9.625	8.921	36.				2913.		

Sales/Rental/3rd Party (HES)

Description	Qty	Qty uom	Depth	Supplier
PLUG,CMTG,TOP,9 5/8,HWE,8.16 MIN/9.06 MA	1	EA		
R/A DENSOMETER W/CHART RECORDER,/JOB,ZI	1	JOB		
ADC (AUTO DENSITY CTRL) SYS, /JOB,ZI	1	JOB		

Tools and Accessories

Type	Size	Qty	Make	Depth	Type	Size	Qty	Make	Depth	Type	Size	Qty	Make
Guide Shoe					Packer					Top Plug	9.625	1	
Float Shoe					Bridge Plug					Bottom Plug			
Float Collar					Retainer					SSR plug set			
Insert Float										Plug Container	9.625	1	
Stage Tool										Centralizers			

Miscellaneous Materials											
Gelling Agt	Conc	Surfactant	Conc	Acid Type	Qty	Conc	%				
Treatment Fld	Conc	Inhibitor	Conc	Sand Type	Size	Qty					
Fluid Data											
Stage/Plug #: 1											
Fluid #	Stage Type	Fluid Name	Qty	Qty uom	Mixing Density lbm/gal	Yield ft ³ /sk	Mix Fluid Gal/sk	Rate bbl/min	Total Mix Fluid Gal/sk		
1	WATER SPACER		20.00	bbl	8.33	.0	.0	5.0			
2	SUPER FLUSH 101	SUPER FLUSH 101 - SBM (12199)	20.00	bbl	10.	.0	.0	5.0			
3	WATER SPACER		20.00	bbl	8.33	.0	.0	6.0			
4	Lead Cement	VERSACEM (TM) SYSTEM (452010)	1240.0	sacks	12.3	2.33	12.62	6.0	12.62		
		12.62 Gal	FRESH WATER								
5	Tail Cement	VERSACEM (TM) SYSTEM (452010)	160.0	sacks	12.8	2.07	10.67	5.0	10.67		
		10.67 Gal	FRESH WATER								
6	DISPLACEMENT		221.00	bbl	8.33	.0	.0	8.0			
7	Top Out Cement	VARICEM (TM) CEMENT (452009)	57.0	sacks	14.	1.78	7.67	3.0	7.67		
		7.67 Gal	FRESH WATER								
Calculated Values			Pressures			Volumes					
Displacement	221.3	Shut In: Instant		Lost Returns	ALL	Cement Slurry	574	Pad			
Top Of Cement	SURFACE	5 Min		Cement Returns	4	Actual Displacement	218.5	Treatment			
Frac Gradient		15 Min		Spacers	60	Load and Breakdown		Total Job			
Rates											
Circulating	RIG	Mixing	6	Displacement	8	Avg. Job	6				
Cement Left In Pipe	Amount	50 ft	Reason	Shoe Joint							
Frac Ring # 1 @	ID	Frac ring # 2 @	ID	Frac Ring # 3 @	ID	Frac Ring # 4 @	ID				
The Information Stated Herein Is Correct				Customer Representative Signature							

The Road to Excellence Starts with Safety

Sold To #: 344034	Ship To #: 2788741	Quote #:	Sales Order #: 7425271
Customer: OXY GRAND JUNCTION EBUSINESS	Customer Rep: BENAVIDES, SIMON		
Well Name: CC	Well #: 697-16-01	API/UWI #: 05-045-17696	
Field: GRAND VALLEY	City (SAP): PARACHUTE	County/Parish: Garfield	State: Colorado
Legal Description:			
Lat: N 39.531 deg. OR N 39 deg. 31 min. 50.102 secs.		Long: W 108.233 deg. OR W -109 deg. 46 min. 0.462 secs.	
Contractor: OXY	Rig/Platform Name/Num: H&P 330		
Job Purpose: Cement Surface Casing	Ticket Amount:		
Well Type: Development Well	Job Type: Cement Surface Casing		
Sales Person: DUNNING, DUSTIN	Srvc Supervisor: STILLSON, ERIC	MBU ID Emp #: 393789	

Activity Description	Date/Time	Cht #	Rate bbl/min	Volume bbl		Pressure psig		Comments
				Stage	Total	Tubing	Casing	
Call Out	06/10/2010 11:30							9 5/8 SURFACE, OXY, H&P 330, CC 697-16-01.
Pre-Convoy Safety Meeting	06/10/2010 13:20							ENTIRE CREW, OBSERVE ALL SAFE DRIVING PROCEDURES
Arrive At Loc	06/10/2010 16:00							ARRIVED EARLY, ON LOCATION TIME 18:00.
Assessment Of Location Safety Meeting	06/10/2010 16:15							REVIEWED EMERGENCY PLAN, ASSESSED WORK AREA AND SPOTTED EQUIPMENT AFTER BLOWING TAIL CEMENT INTO BIN.
Pre-Rig Up Safety Meeting	06/10/2010 16:50							ENTIRE CREW, WALKED THROUGH RIG UP LOOKING FOR HAZARDS.
Rig-Up Equipment	06/10/2010 17:00							1 PICK UP, 1 HT400 PUMP TRUCK, 2 BULK CEMENT BINS, 1 SUPERFLUSH TRANSPORT, 1 QUICK LATCH HEAD WITH PLUG.
Pre-Job Safety Meeting	06/10/2010 20:30							ENTIRE CREW, CO REP AND RIG CREW.
Start Job	06/10/2010 20:58							TD 2951 TP 2913 SJ 50 FC 2863 MW 8.9 PPG, 9 5/8 36# CASING IN 14 3/4 HOLE.
Pump Water	06/10/2010 21:00		2	2			65.0	FILL LINES BEFORE TESTING

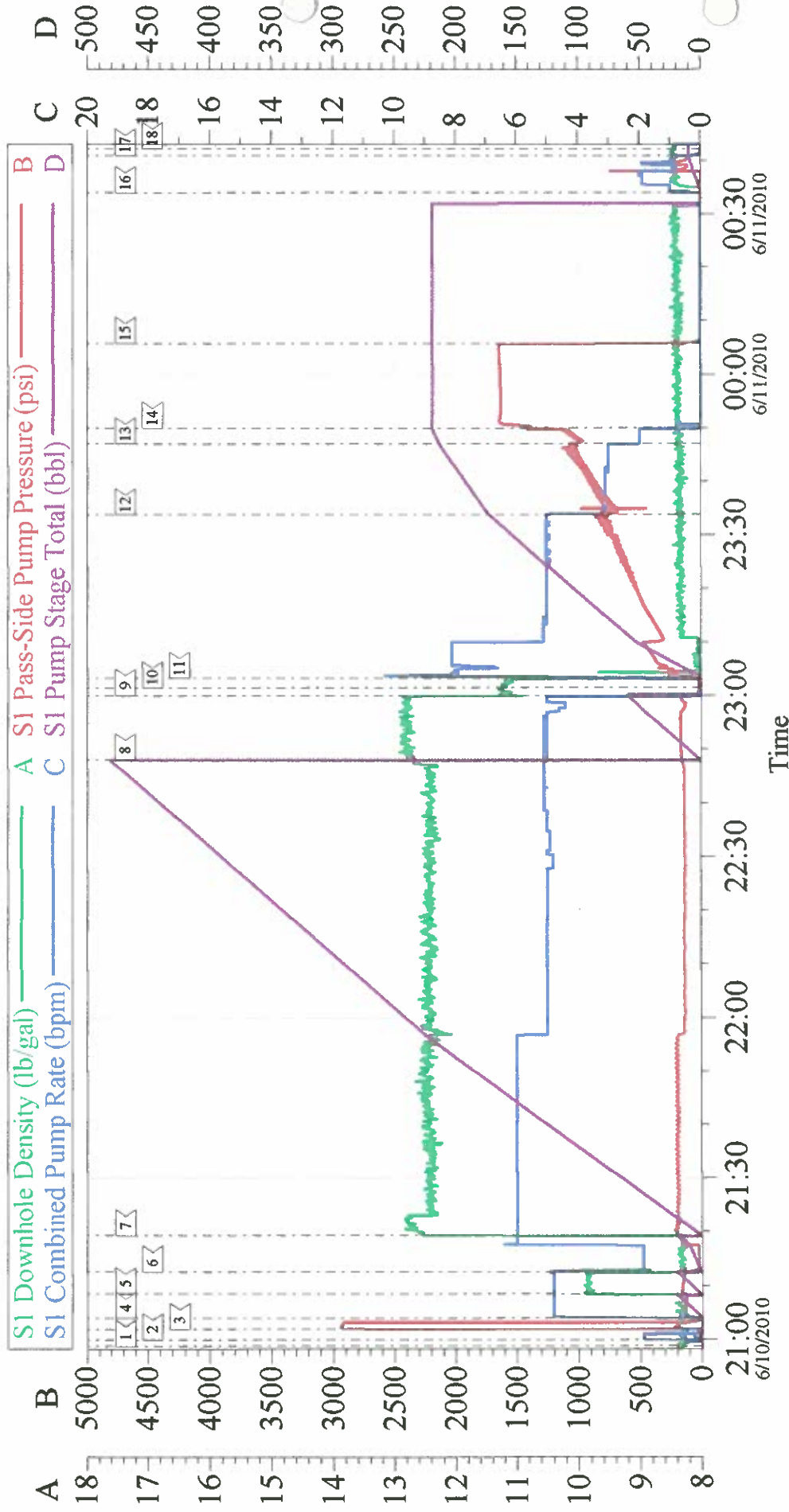
Activity Description	Date/Time	Cht #	Rate bbl/min	Volume bbl		Pressure psig		Comments
				Stage	Total	Tubing	Casing	
Pressure Test	06/10/2010 21:02		0.5	0.1			2940.0	HELD PRESSURE FOR 2 MIN, PRESSURE HELD, NO LEAKS.
Pump Spacer 1	06/10/2010 21:04		5	20			190.0	FRESH WATER
Pump Spacer 2	06/10/2010 21:08		5	20			180.0	SUPER FLUSH 101, CHARGED FROM ON LOCATION TIME OF 18:00 TO BUMP PLUG AT 23:49, 6 HRS CHARGED.
Pump Spacer 1	06/10/2010 21:12		6	20			165.0	FRESH WATER, PUMPED AT 2 BPM UNTIL CEMENT TUB UP TO WEIGHT AND WEIGHED WITH SCALES, SPED RATE TO 6 BPM AT 9 BBLS GONE.
Pump Lead Cement	06/10/2010 21:19		6	514			205.0	1240 SKS VERSACEM, 12.3 PPG, 2.33 CUFT/SK, 12.62 GAL/SK. SLOWED RATE TO 5 BPM AT 225 BBLS GONE PER CO REP.
Pump Tail Cement	06/10/2010 22:48		5	59			168.0	160 SKS VERSACEM, 12.8 PPG, 2.07 CUFT/SK, 10.67 GAL/SK.
Shutdown	06/10/2010 23:00							
Drop Top Plug	06/10/2010 23:01							VARIFIED PLUG LEFT CONTAINER.
Pump Displacement	06/10/2010 23:03		8	221.3			1090.0	FRESH WATER, SLOWED RATE TO 5 BPM AT 50 BBLS GONE, THEN SLOWED TO 3 BPM AT 170 BBLS GONE PER CO REP.
Slow Rate	06/10/2010 23:46		2	210			1090.0	SLOWED RATE TO 2 BPM LAST 10 BBLS TO LAND PLUG.

Activity Description	Date/Time	Cht #	Rate bbl/min	Volume bbl		Pressure psig		Comments
				Stage	Total	Tubing	Casing	
Bump Plug	06/10/2010 23:49		2	218.5			1600.0	PLUG LANDED AT 218.5 BBLS GONE AT 1090 PSI, BUMPED UP TO 1600 PSI AND HELD FOR 15 MIN PER CO REP.
Check Floats	06/11/2010 00:05							FLOATS HELD, WHEN RELEASED PRESSURE GOT 1.5 BBLS OF WATER BACK TO TRUCK. NO RETURNS THROUGHOUT JOB, PIPE WAS NOT RECIPROCATED.
Safety Huddle	06/11/2010 00:06							RIGGED DOWN FLOOR AND RIGGED UP TO PUMP DOWN PARASITE.
Pump Water	06/11/2010 00:33		2	10			650.0	PUMPED 10 BBLS OF WATER WITH 10 LBS SUGAR TO CLEAR PARASITE STRING. PUMPED AT 2 BPM, CAUGHT PRESSURE AT 6.5 BBLS GONE, PRESSURE SPIKED AT 650 PSI.
Shutdown	06/11/2010 00:40							
Safety Huddle	06/11/2010 00:45							RIGGED UP TO PUMP TOPOUT. DID NOT USE ANY NEW 1" PIPE.
Pump Cement	06/11/2010 01:22		3	55			80.0	APPROX 170 SKS TOPOUT LEFT OVER FROM PREVIOUS WELL PUMPED AT 14.0 PPG, 1.78 CUFT/SK, 7.67 GAL/SK, WAS CHARGED ON PREVIOUS WELL TICKET.
Pump Water	06/11/2010 01:42		3	2			70.0	PUMPED 2 BBLS WATER BEHIND CEMENT TO CLEAN LINES.

Cementing Job Log

Activity Description	Date/Time	Cht #	Rate bbl/ min	Volume bbl		Pressure psig		Comments
				Stage	Total	Tubing	Casing	
Shutdown	06/11/2010 01:43							NO CEMENT TO SURFACE, WAIT 2 HRS TO PUMP MORE TOPOUT.
Pump Cement	06/11/2010 04:09		3	14			105.0	TOPOUT, 14.0 PPG, 1.78 CUFT/SK, 7.67 GAL/SK. PUMPED 14 BBLS AND GOT CEMENT TO SURFACE.
Shutdown	06/11/2010 04:14							SHUTDOWN TO SEE IF CEMENT WOULD FALL BACK. IT DID NOT.
Pump Cement	06/11/2010 04:17		1.5	4			30.0	PUMPED 4 BBLS MORE PER CO REP.
Shutdown	06/11/2010 04:19							PUMPED WATER INTO CELLAR TO CLEAN LINES AND CELLAR PUMP.
End Job	06/11/2010 04:20							18 BBLS TOTAL FROM BULK TRUCK #10722398. 57 SKS USED, 217 SKS LEFT OVER WILL BE LEFT ON LOCATION FOR NEXT TOPOUT. ALL 274 SKS CHARGED ON THIS TICKET.
Post-Job Safety Meeting (Pre Rig-Down)	06/11/2010 04:30							ENTIRE CREW
Rig-Down Equipment	06/11/2010 05:00							BLEW DOWN BOTH BINS.
Pre-Convoy Safety Meeting	06/11/2010 05:55							ENTIRE CREW
Crew Leave Location	06/11/2010 06:00							THANK YOU FOR USING HALLIBURTON, ERIC STILLSON AND CREW.

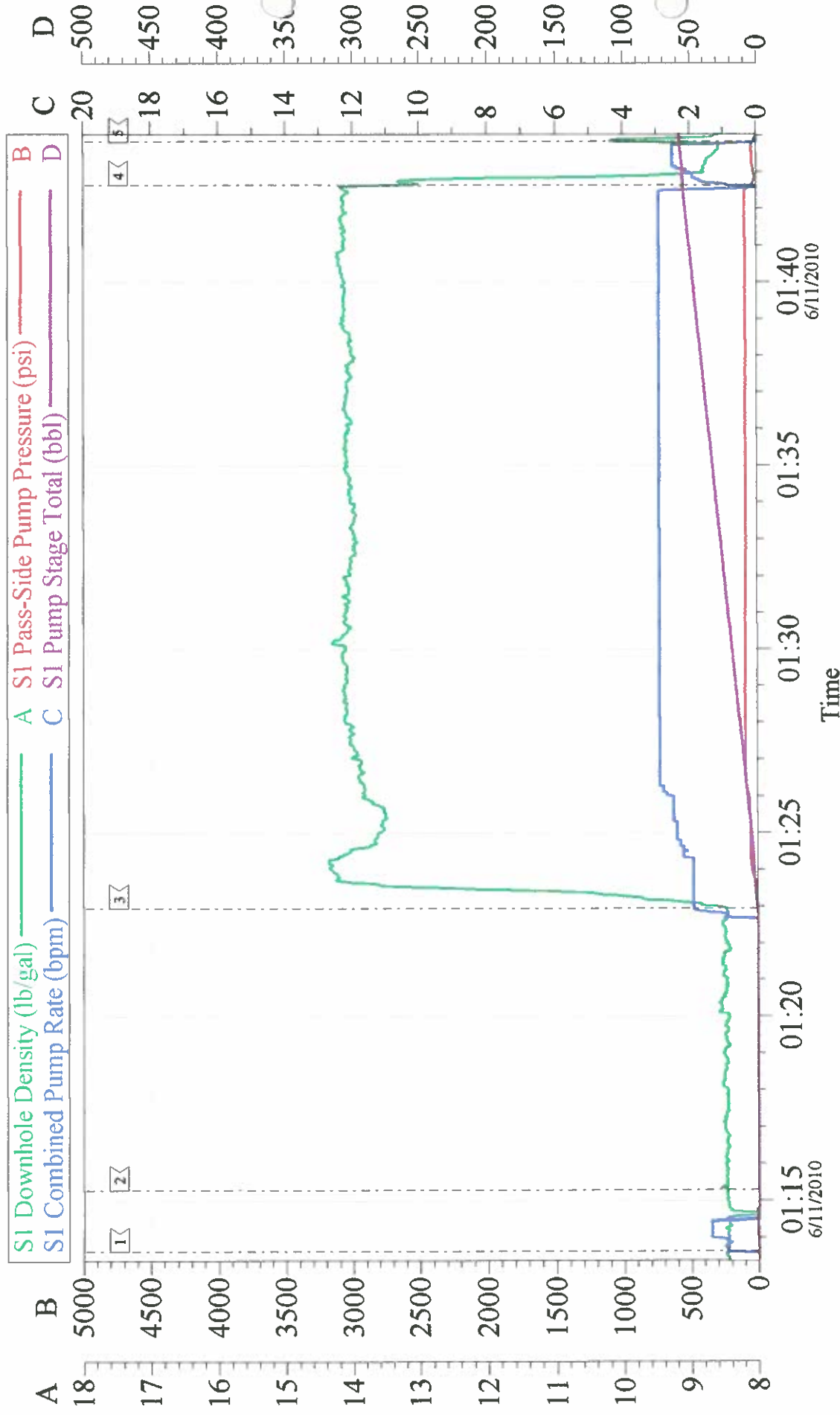
OXY **9 5/8 SURFACE**



Local Event Log								
1	START JOB	6/10/2010 20:58:53	2	FILL LINES	6/10/2010 21:00:03	3	TEST LINES	6/10/2010 21:02:00
4	PUMP H2O SPACER	6/10/2010 21:04:02	5	PUMP SUPERFLUSH	6/10/2010 21:08:34	6	PUMP H2O SPACER	6/10/2010 21:12:37
7	PUMP LEAD CEMENT	6/10/2010 21:19:24	8	PUMP TAIL CEMENT	6/10/2010 22:48:00	9	SHUTDOWN	6/10/2010 23:00:04
10	DROP PLUG	6/10/2010 23:01:31	11	PUMP DISPLACEMENT	6/10/2010 23:03:17	12	SLOW RATE	6/10/2010 23:33:47
13	SLOW RATE	6/10/2010 23:46:58	14	BUMP PLUG	6/10/2010 23:49:55	15	CHECK FLOATS	6/11/2010 00:05:45
16	CLEAR PARASITE	6/11/2010 00:33:56	17	SHUTDOWN	6/11/2010 00:40:56	18	END JOB	6/11/2010 00:42:09

Customer:	OXY	Job Date:	10-Jun-2010	Sales Order #:	7425271
Well Description:	CC 697-16-01	Job Type:	SURFACE	ADC Used:	YES
Company Rep:	SIMON BENAVIDES	Cement Supervisor:	ERIC STILLSON	Elite #:	4/TRAVIS BROWN

OXY TOPOUT 1



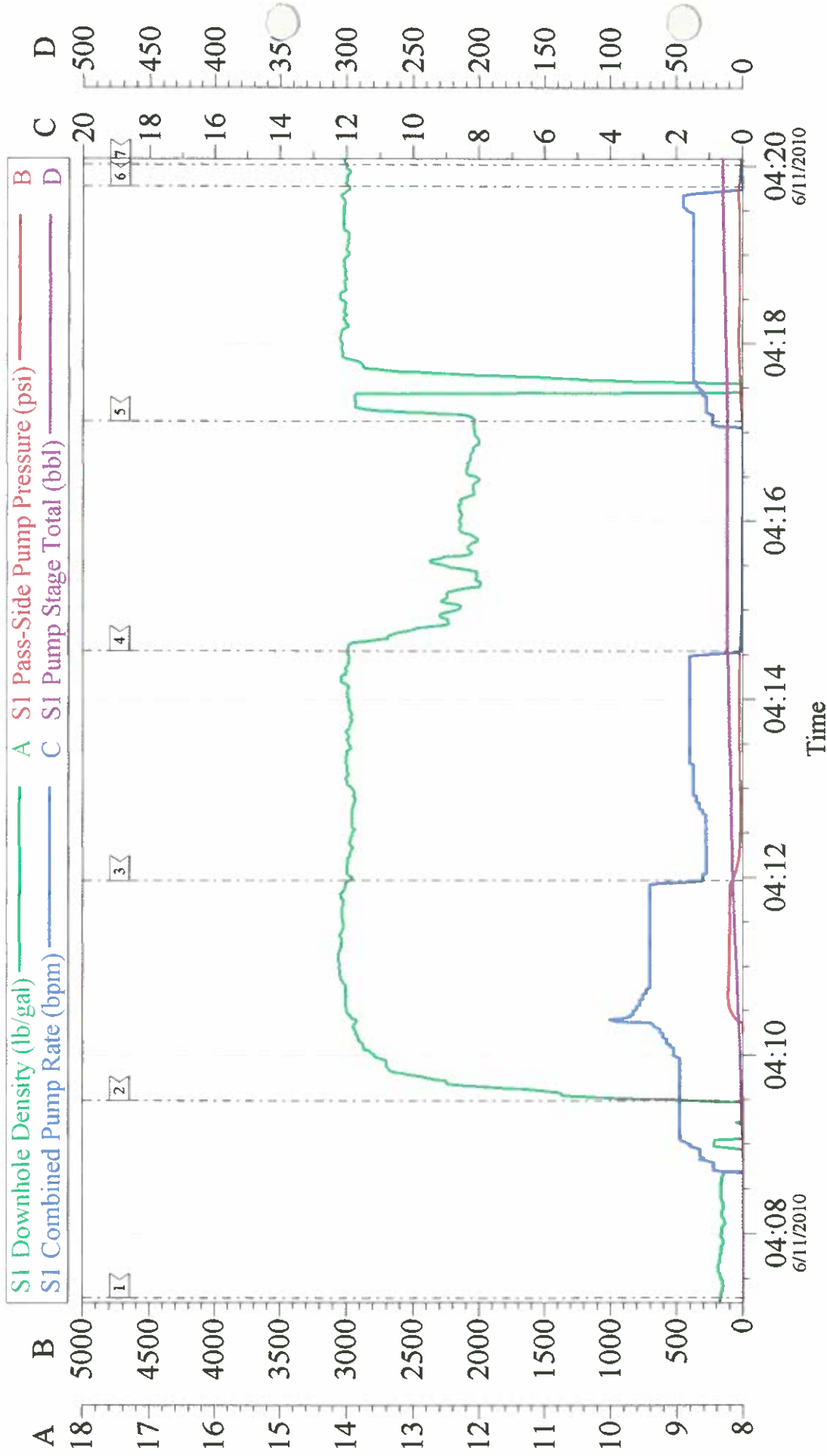
Customer: OXY
Well Description: CC 697-16-01
Company Rep: SIMON BENAVIDES

Job Date: 11-Jun-2010
Job Type: TOPOUT
Cement Supervisor: ERIC STILLSON

Sales Order #: 7425271
ADC Used: YES
Elite #: 4/ADAM ANDERSON

OXY

TOPOUT 2



Customer: OXY	Job Date: 11-Jun-2010	Sales Order #: 7425271
Well Description: CC 697-16-01	Job Type: TOPOUT	ADC Used: YES
Company Rep: SIMON BENAVIDES	Cement Supervisor: ERIC STILLSON	Elite #: 4/ADAM ANDERSON