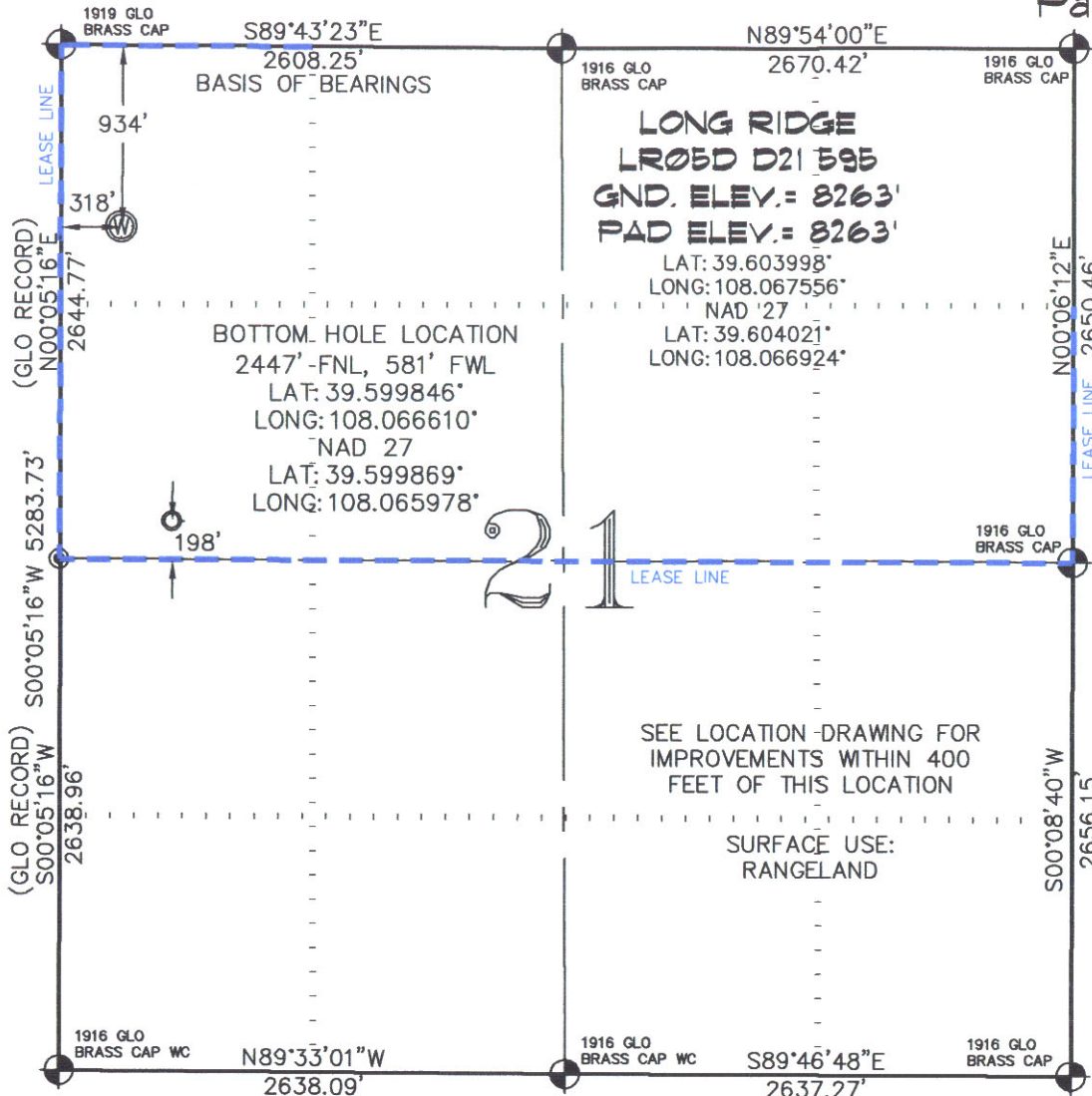


Pad Location

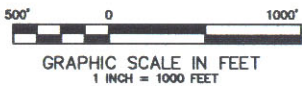


**LONG RIDGE**  
**LR05D D21 595**  
**GND. ELEV.: 8263'**  
**PAD ELEV.: 8263'**  
 LAT: 39.603998"  
 LONG: 108.067556"  
 NAD '27  
 LAT: 39.604021"  
 LONG: 108.066924"

**BOTTOM HOLE LOCATION**  
 2447'-FNL, 581' FWL  
 LAT: 39.599846"  
 LONG: 108.066610"  
 NAD 27  
 LAT: 39.599869"  
 LONG: 108.065978"

SEE LOCATION DRAWING FOR  
 IMPROVEMENTS WITHIN 400  
 FEET OF THIS LOCATION

SURFACE USE:  
 RANGELAND



**-LEGEND-**

- SECTION CORNER LOCATION BASED ON GLO RECORD INFORMATION
- ⊙ FIELD SURVEYED SECTION CORNER LOCATIONS
- ⊙ FIELD SURVEYED WELL LOCATION
- CALCULATED BOTTOM HOLE LOCATION

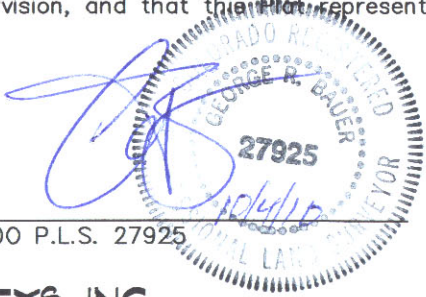
**THIS WELL LOCATION PLAT WAS PREPARED FOR BERRY PETROLEUM COMPANY TO LOCATE THE LONG RIDGE LR05D D21 595 WELL, 934 FEET FROM THE NORTH LINE AND 318 FEET FROM THE WEST LINE IN THE NW1/4 NW1/4 OF SECTION 21, T. 5 S., R. 95 W. OF THE 6TH P.M. GARFIELD COUNTY, COLORADO.**

**REFERENCE NOTES**

- 1) T. 5 S., R. 95 W., 6TH P.M. GLO PLAT.
- 2) U.S.G.S. QUAD: FORKED GULCH, CO
- 3) ELEVATIONS BASED ON N.A.V.D. 1988
- 4) LATITUDES AND LONGITUDES ARE BASED ON NAD 83, COLORADO CENTRAL ZONE.
- 5) GPS OPERATOR IVAN MARTIN, OBSERVED A PDOP OF 2.1.
- 6) ALL GPS OBSERVATIONS ARE IN COMPLIANCE WITH COGCC RULE NO. 215.
- 7) SURFACE AND BOTTOM HOLE LOCATIONS ARE MEASURED 90° FROM SECTION LINES.

**SURVEYOR'S CERTIFICATE**

I, George R. Bauer: a Professional Land Surveyor in the State of Colorado do hereby certify that this Survey was made under my direct supervision, and that this Plat represents said Survey.



COLORADO P.L.S. 27925



**CONSTRUCTION SURVEYS, INC.**  
 0012 SUNRISE BLYD.  
 SILT, CO 81652  
 (970)876-5753

VIEW: 1B

|                    |                                 |
|--------------------|---------------------------------|
| SURVEYED: 09/16/10 | SCALE: 1" = 1000'               |
| DRAFTED: 09/30/10  | DWG: Berry/LongRidgeD21-595.dwg |
| CHECKED: 10/04/10  | SHEET: 1 of 11                  |