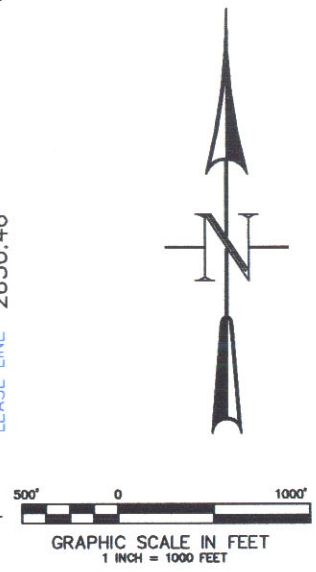
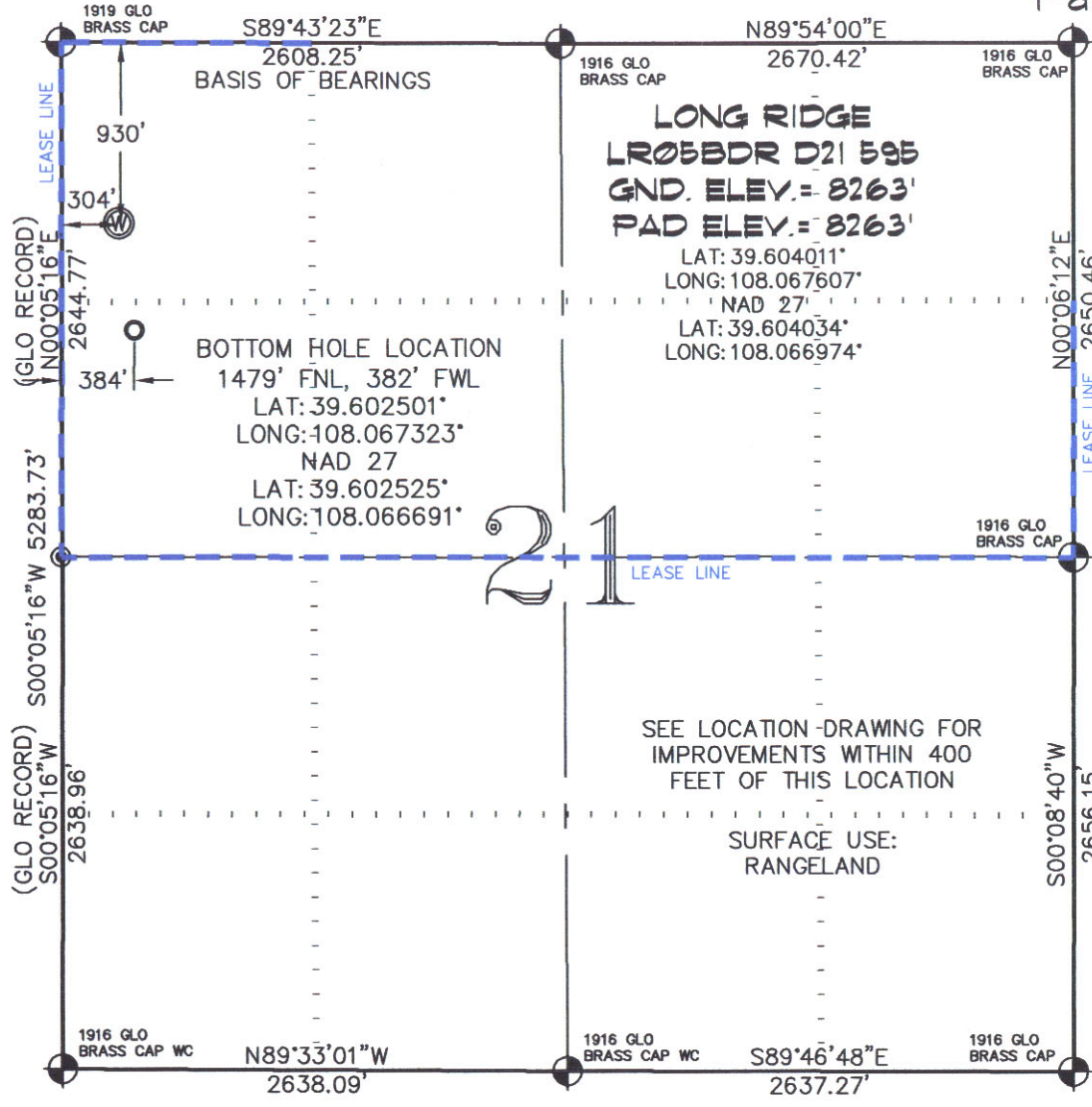


SEC. 21, T. 5 S., R. 95 W. OF THE 6TH P.M. Long Ridge D21-595
Pad Location



- LEGEND-**
- SECTION CORNER LOCATION BASED ON GLO RECORD INFORMATION
 - ⊙ FIELD SURVEYED SECTION CORNER LOCATIONS
 - ⊙ FIELD SURVEYED WELL LOCATION
 - CALCULATED BOTTOM HOLE LOCATION

SEE LOCATION DRAWING FOR IMPROVEMENTS WITHIN 400 FEET OF THIS LOCATION

SURFACE USE: RANGELAND

THIS WELL LOCATION PLAT WAS PREPARED FOR BERRY PETROLEUM COMPANY TO LOCATE THE LONG RIDGE LR05BDR D21 595 WELL, 930 FEET FROM THE NORTH LINE AND 304 FEET FROM THE WEST LINE IN THE NW1/4 NW1/4 OF SECTION 21, T. 5 S., R. 95 W. OF THE 6TH P.M. GARFIELD COUNTY, COLORADO.

REFERENCE NOTES

- 1) T. 5 S., R. 95 W., 6TH P.M. GLO PLAT.
- 2) U.S.G.S. QUAD: FORKED GULCH, CO
- 3) ELEVATIONS BASED ON N.A.V.D. 1988
- 4) LATITUDES AND LONGITUDES ARE BASED ON NAD 83, COLORADO CENTRAL ZONE.
- 5) GPS OPERATOR IVAN MARTIN, OBSERVED A PDOP OF 2.1.
- 6) ALL GPS OBSERVATIONS ARE IN COMPLIANCE WITH COGCC RULE NO. 215.
- 7) SURFACE AND BOTTOM HOLE LOCATIONS ARE MEASURED 90° FROM SECTION LINES.

SURVEYOR'S CERTIFICATE

I, George R. Bauer: a Professional Land Surveyor in the State of Colorado do hereby certify that this Survey was made under my direct supervision, and that this plat represents said Survey.



COLORADO P.L.S. 27925



CONSTRUCTION SURVEYS, INC.
0012 SUNRISE BLVD.
SILT, CO 81652
(970)876-5753

VIEW: 1A

SURVEYED: 09/16/10	SCALE: 1" = 1000'
DRAFTED: 09/30/10	DWG: Berry/LongRidgeD21-595.dwg
CHECKED: 10/04/10	SHEET: 1 of 11